

ABB BALDOR RELIANCE III

Customer information packet CFSWDNM3610T-E

3HP, 3500RPM, 3PH, 60HZ, 182TC, 3646M, TENV, F1

Class - None

Division - Not Applicable

Specifications

Enclosure	TENV
Frame	182TC
Frame Material	Stainless Steel
Frequency	60.00 Hz
Haz Area Class and Group	None
Haz Area Division	Not Applicable
Motor Letter Type	Three Phase
Output @ Frequency	3.000 HP @ 60 HZ
Phase	3
Synchronous Speed @ Frequency	3600 RPM @ 60 HZ
Voltage @ Frequency	230.0 V @ 60 HZ 460.0 V @ 60 HZ
Agency Approvals	NEMA PREMIUM CSA UR
Ambient Temperature	40 °C
Auxiliary Box	NO AUXILLARY BOX
Auxiliary Box Lead Termination	None
Base Indicator	Rigid
Bearing Grease Type	Polyrex EM (-20F +300F)
Blower	None
Current @ Voltage	3.500 A @ 460.0 V 7.000 A @ 230.0 V
Design Code	A
Drip Cover	No Drip Cover
Duty Rating	CONT
Efficiency @ 100% Load	89.5 %
Electrically Isolated Bearing	Not Electrically Isolated
Feedback Device	NO FEEDBACK
Front Face Code	Standard
Front Shaft Indicator	None
Heater Indicator	No Heater

Part Detail

Revision	Q
Type	AC
Mech. spec.	36R551
Base	
Status	PRD/A
Elec. spec.	36WGR690
Layout	36LYR551
Eff. date	04-06-2026
CD Diagram	CD0005
Poles	02
Leads	9#16
Proprietary	False
Created date	08-07-2017

High Voltage Full Load Amps	3.5 a
Insulation Class	H
Inverter Code	Inverter Ready
KVA Code	P
Lifting Lugs	Standard Lifting Lugs
Locked Bearing Indicator	Locked Bearing
Motor Lead Exit	Ko Box
Motor Lead Quantity/Wire Size	9 @ 16 AWG
Motor Lead Termination	Flying Leads
Motor Standards	NEMA
Motor Type	3646M
Mounting Arrangement	F1
Number of Poles	2
Overall Length	17.05 IN
Power Factor	92
Product Family	WD All SS Encapsulated
Pulley End Bearing Type	Sealed Bearing
Pulley Face Code	C-Face
Pulley Shaft Indicator	Standard
Rodent Screen	None
RoHS Status	ROHS COMPLIANT
Service Factor	1.15
Shaft Diameter	1.125 IN
Shaft Extension Location	Pulley End
Shaft Ground Indicator	No Shaft Grounding
Shaft Rotation	Reversible
Shaft Slinger Indicator	Shaft Slinger
Speed	3500 rpm
Speed Code	Single Speed
Starting Method	Direct on line
Thermal Device - Bearing	None
Thermal Device - Winding	None
Vibration Sensor Indicator	No Vibration Sensor
Winding Thermal 1	None

Winding Thermal 2

None

Nameplate

NP4427AAA01

CAT #	CFSWDDNM3610T-E	WT	96	LBS	
SPEC	36R551R690G1	ENCL	TENV		
SER #		CC	010A	IP	69
HP	3	MAG CUR	2.4/1.2		
VOLTS	230/460	NEMA NOM. EFF		89.5	
AMPS	7/3.5	PF	92		
RATING	40C AMB-CONT				
RPM	3500	MAX RPM	5400		
FRAME	182TC	HZ	60	CODE	P
		CLASS	H		
SER.F.	1.15	SF AMP	8/4	PH	3
		DES	A		
DE	6206	ODE	6206		
LUBRICATION	POLYREX EM				
ID LOGO	INVERTER TYPE	VPWM	CHP	60	TO
				90	1.5:1
ID LOGO	WK2	0.207	CT	15	TO
				60	4:1
ID LOGO	SL HZ	1.7	VT	3	TO
				60	20:1
YR		QR			

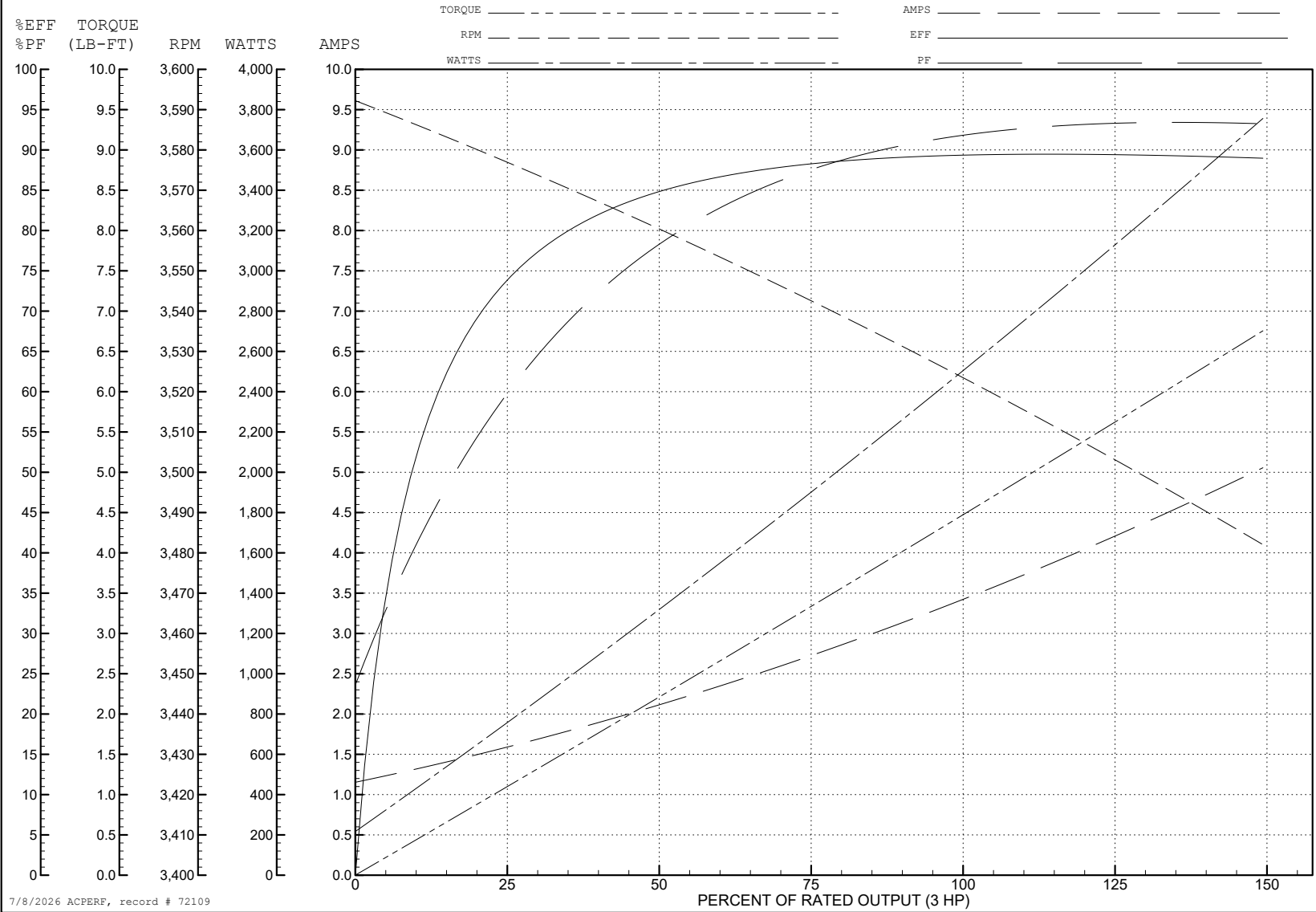
ABB Motors and Mechanical Inc.

WINDING # 36WGR690

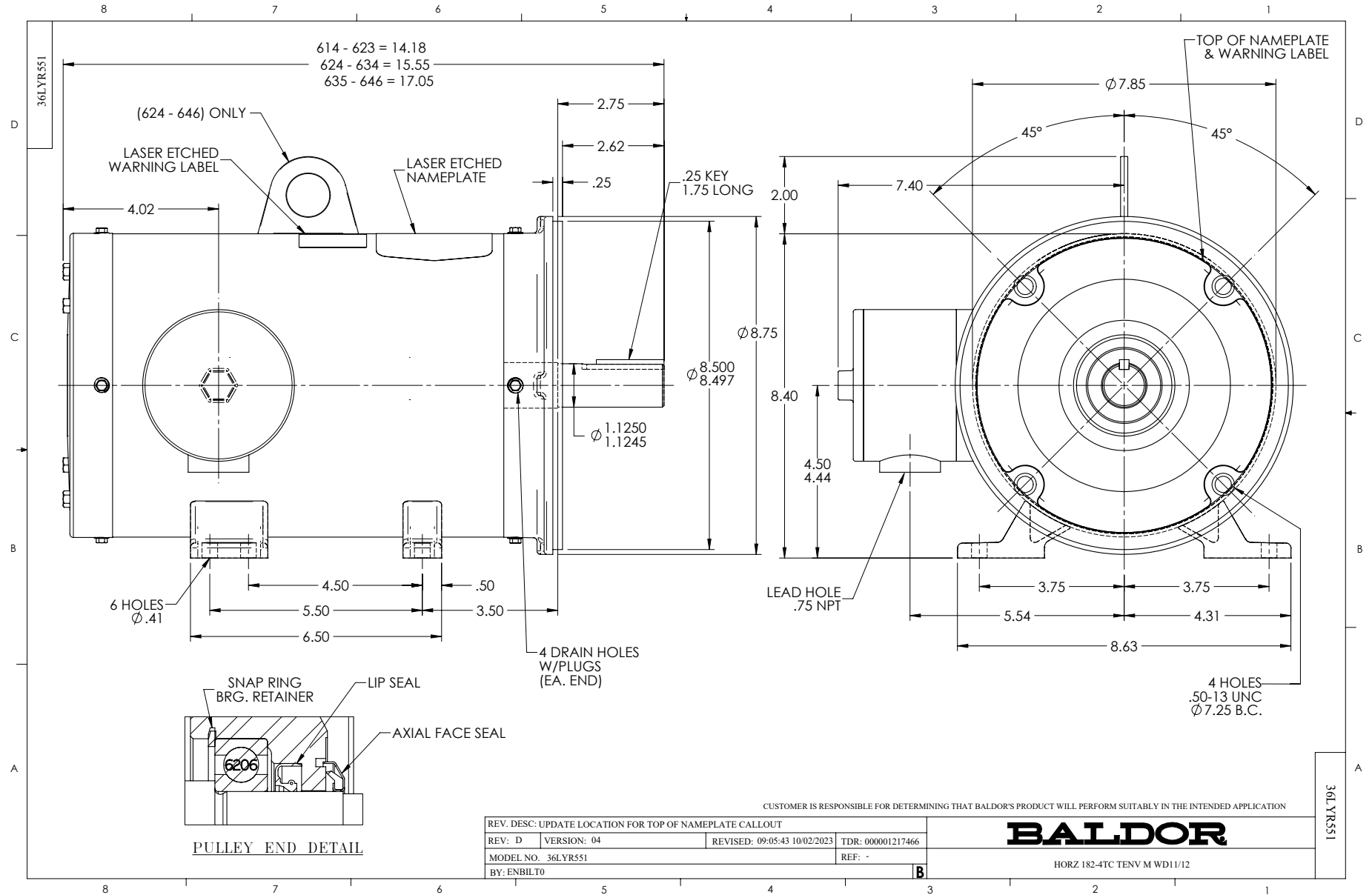
3 HP 3 PH 60 HZ 3500 RPM 460 V 3646M

Typical performance - not guaranteed values.

TORQUES (LB-FT): PO=29.7 PU=22 LR=27.7 LRA=51.1



7/8/2026 ACPERF, record # 72109



CD0005



LOW VOLTAGE
(2Y)



LINE

HIGH VOLTAGE
(1Y)



LINE

NOTES:

1. INTERCHANGE ANY TWO LINE LEADS TO REVERSE ROTATION.
2. OPTIONAL THERMOSTATS ARE PROVIDED WHEN SPECIFIED.
3. ACTUAL NUMBER OF INTERNAL PARALLEL CIRCUITS MAY BE A MULTIPLE OF THOSE SHOWN ABOVE.
4. LEAD COLORS ARE OPTIONAL. LEADS MUST ALWAYS BE NUMBERED AS SHOWN.

CD0005

REV. DESC: REVISE TO SHOW OPTIONAL COLORS

REV. LTR: E BY: JLP REVISED: 01/19/99 10:15 TDR: 0171435

500000

FILE: AAA00005140

MDL: -

MTL: -

BALDOR ELECTRIC Co.

3PH, DV, 9 LEADS