

**BALDOR • RELIANCE**

---

# Customer information packet

## CFSWDM3714T-E-G

10HP, 1770RPM, 3PH, 60HZ, 215TC, 3756M, TEFC, F

Class - None

Division - Not Applicable

## Specifications

Enclosure	TEFC
Frame	215TC
Frame Material	Stainless Steel
Frequency	60.00 Hz
Haz Area Class and Group	None
Haz Area Division	Not Applicable
Motor Letter Type	Three Phase
Output @ Frequency	10.000 HP @ 60 HZ
Phase	3
Synchronous Speed @ Frequency	1800 RPM @ 60 HZ
Voltage @ Frequency	460.0 V @ 60 HZ 230.0 V @ 60 HZ
Agency Approvals	CSA EEV NEMA PREMIUM NEMA_PREMIUM UR
Ambient Temperature	40 °C
Auxillary Box	No Auxillary Box
Auxillary Box Lead Termination	None
Base Indicator	Rigid
Bearing Grease Type	Polyrex EM (-20F +300F)
Blower	None
Current @ Voltage	26.700 A @ 208.0 V 25.000 A @ 230.0 V 12.500 A @ 460.0 V
Design Code	A
Drip Cover	No Drip Cover
Duty Rating	CONT
Efficiency @ 100% Load	92.4 %
Electrically Isolated Bearing	Not Electrically Isolated
Feedback Device	NO FEEDBACK
Heater Indicator	No Heater

## Part detail

Revision	A
Type	AC
Mech. spec.	
Base	
Status	PRD/A
Elec. spec.	37WGS251
Layout	37LY-000-395
Eff. date	03-08-2023
CD Diagram	CD0180
Poles	04
Leads	9#14
Proprietary	False
Created date	10-08-2021

<b>High Voltage Full Load Amps</b>	12.5 a
<b>Insulation Class</b>	H
<b>Inverter Code</b>	Inverter Duty
<b>KVA Code</b>	K
<b>Lifting Lugs</b>	Standard Lifting Lugs
<b>Locked Bearing Indicator</b>	Locked Bearing
<b>Motor Lead Termination</b>	Flying Leads
<b>Motor Standards</b>	NEMA
<b>Motor Type</b>	3756M
<b>Mounting Arrangement</b>	F1
<b>Number of Poles</b>	4
<b>Overall Length</b>	22.12 IN
<b>Power Factor</b>	81
<b>Product Family</b>	WD All SS Encapsulated
<b>Pulley End Bearing Type</b>	Sealed Bearing
<b>Pulley Face Code</b>	C-Face
<b>Rodent Screen</b>	None
<b>Service Factor</b>	1.15
<b>Shaft Diameter</b>	1.375 IN
<b>Shaft Ground Indicator</b>	Shaft Grounding
<b>Shaft Rotation</b>	Reversible
<b>Speed</b>	1770 rpm
<b>Speed Code</b>	Single Speed
<b>Starting Method</b>	Direct on line
<b>Thermal Device - Bearing</b>	None
<b>Thermal Device - Winding</b>	None
<b>Vibration Sensor Indicator</b>	No Vibration Sensor
<b>Winding Thermal 1</b>	None
<b>Winding Thermal 2</b>	None

**Nameplate**

<b>NP4292K02</b>										
<b>CAT.NO.</b>	CFSWDM3714T-E-G									
<b>SPEC.</b>	37-0000-0432									
<b>HP</b>	10									
<b>VOLTS</b>	230/460									
<b>AMPS</b>	25/12.5									
<b>R.P.M.</b>	1770									
<b>FRAME</b>	215TC		<b>HZ</b>	60		<b>PH</b>	3			
<b>SER.F.</b>	1.15	<b>CODE</b>	K	<b>DES.</b>	A	<b>CLASS</b>	H			
<b>NEMA NOM. EFF.</b>	92.4		<b>P.F.</b>	81						
<b>RATING</b>	40C AMB-CONT									
<b>CC</b>	010A		<b>USABLE AT 208V</b>				N/A			
<b>DE</b>	6307		<b>ODE</b>	6307						
<b>ENCL</b>	TEFC	<b>SN</b>								
	4:1CT, 10:1VT IP69									

**AC Induction Motor Performance Data**

Record # 62567

Typical performance - not guaranteed values

Winding: 37WGS251-R016		Type: 3756M	Enclosure: TEFC	
<b>Nameplate Data</b>		<b>460 V, 60 Hz: High Voltage Connection</b>		
Rated Output (HP)	10	Full Load Torque	29.9 LB-FT	
Volts	230/460	Start Configuration	direct on line	
Full Load Amps	25/12.5	Breakdown Torque	102 LB-FT	
R.P.M.	1770	Pull-up Torque	53.6 LB-FT	
Hz	60 Phase	3	Locked-rotor Torque	74.2 LB-FT
NEMA Design Code	B KVA Code	K	Starting Current	105 A
Service Factor (S.F.)	1.15	No-load Current	5.44 A	
NEMA Nom. Eff.	92.4 Power Factor	81	Line-line Res. @ 25°C	0.799 Ω
Rating - Duty	40C AMB-CONT	Temp. Rise @ Rated Load	76°C	
S.F. Amps		Temp. Rise @ S.F. Load	93°C	
		Locked-rotor Power Factor	31.7	
		Rotor inertia	1.38 LB-FT <sup>2</sup>	

**Load Characteristics 460 V, 60 Hz, 10 HP**

% of Rated Load	25	50	75	100	125	150	S.F.
Power Factor	43	65	76	81	83	84	82
Efficiency	88	92.6	93	92.9	92.2	91.5	92.5
Speed	1793	1786	1778	1770	1762	1752	1765
Line amperes	6.18	7.79	10	12.5	15.3	18.3	14.2

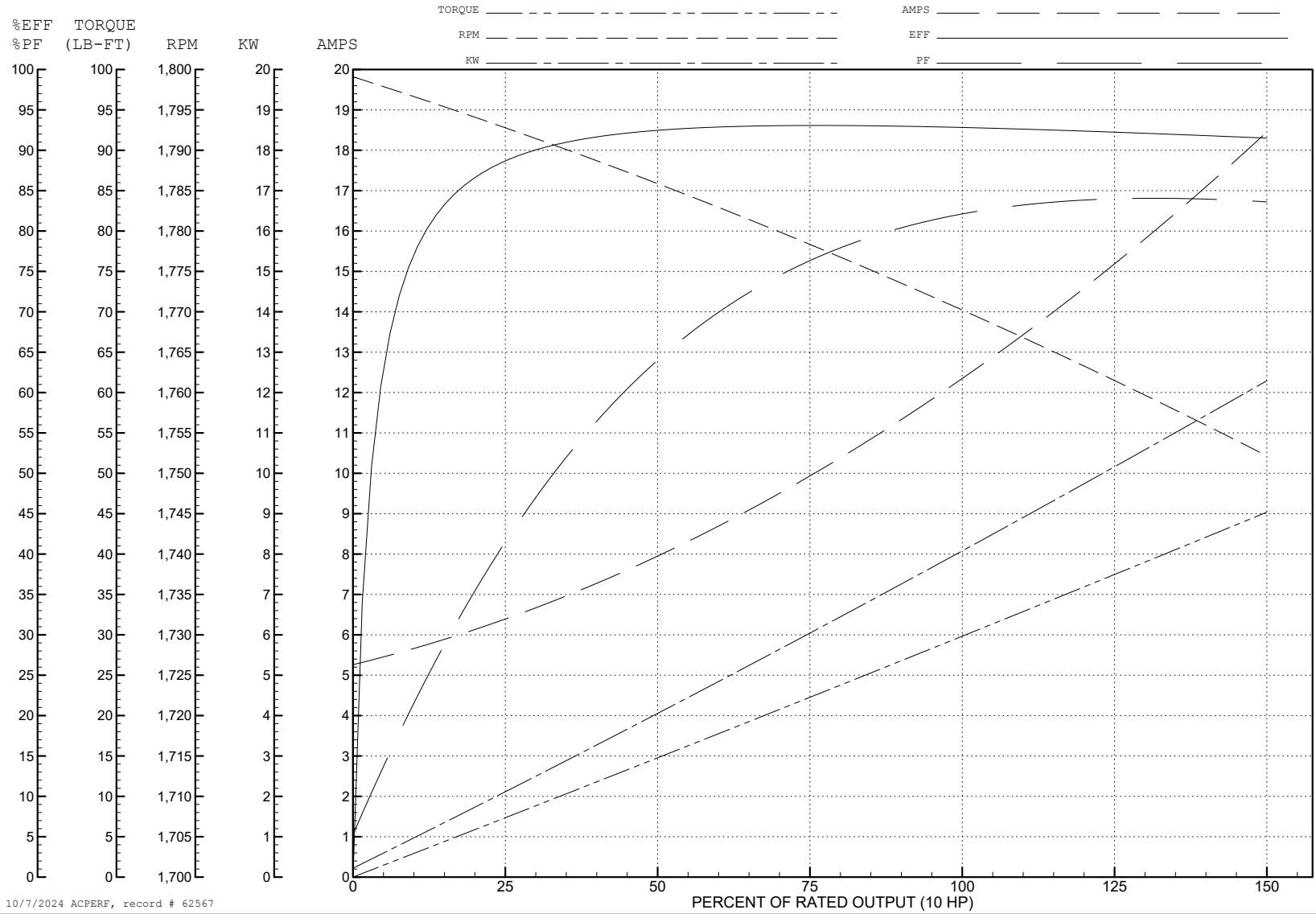
ABB Motors and Mechanical Inc.

WINDING # 37WGS251

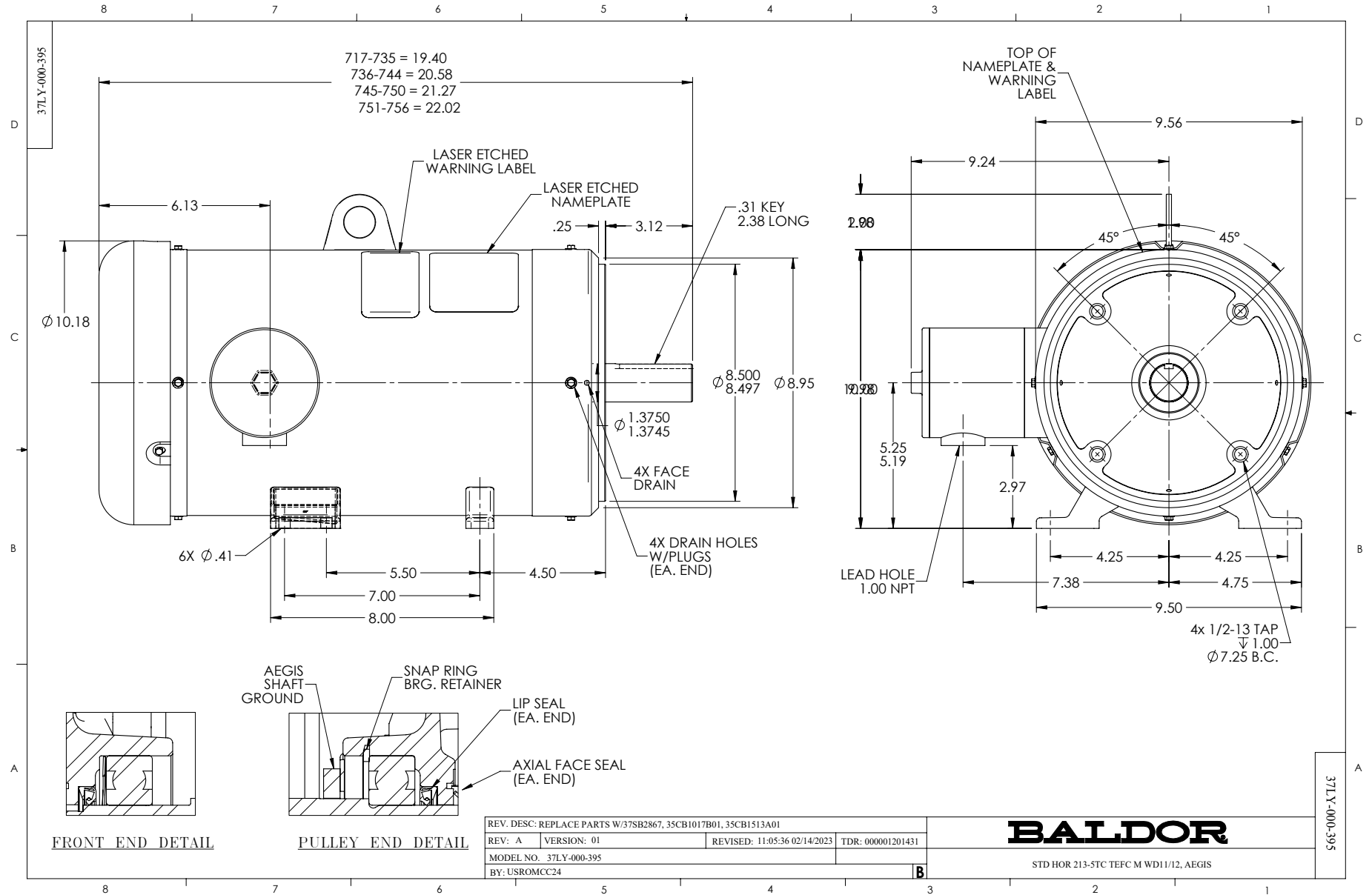
Typical performance - not guaranteed values.

10 HP 3 PH 60 HZ 1770 RPM 460 V 3756M

TORQUES (LB-FT): PO=102 PU=53.6 LR=74.2 LRA=105



10/7/2024 ACPERF, record # 62567



CD0180



LOW VOLTAGE  
(2D)



HIGH VOLTAGE  
(1D)



NOTES:

1. INTERCHANGE ANY TWO LINE LEADS TO REVERSE ROTATION.
2. OPTIONAL THERMOSTATS ARE PROVIDED WHEN SPECIFIED.
3. ACTUAL NUMBER OF INTERNAL PARALLEL CIRCUITS MAY BE A MULTIPLE OF THOSE SHOWN ABOVE.
4. LEAD COLORS ARE OPTIONAL. LEADS MUST ALWAYS BE NUMBERED AS SHOWN.

CD0180

REV. DESC: ADD CLASS CONN00000007		
REV. LTR: D	VERSION: 01	TDR: 000001099922
FILE: \AAA\00005\148	REVISED: 10: 25: 29 02/19/2019	BY: ENBRIRO
MTL: -	© □	

**BALDOR - RELIANCE®**

3PH, DV, 9 LEADS, DELTA CONNECTION

SH 1 of 1