



Customer information packet

CFSWDM3711T-E-G

10HP, 3500RPM, 3PH, 60HZ, 215TC, 3744M, TEFC, F

Class - None

Division - Not Applicable

Specifications

Enclosure	TEFC
Frame	215TC
Frame Material	Stainless Steel
Frequency	60.00 Hz
Haz Area Class and Group	None
Haz Area Division	Not Applicable
Motor Letter Type	Three Phase
Output @ Frequency	10.000 HP @ 60 HZ
Phase	3
Synchronous Speed @ Frequency	3600 RPM @ 60 HZ
Voltage @ Frequency	460.0 V @ 60 HZ 230.0 V @ 60 HZ
Agency Approvals	CSA EEV NEMA PREMIUM NEMA_PREMIUM UR
Ambient Temperature	40 °C
Auxiliary Box	NO AUXILLARY BOX
Auxiliary Box Lead Termination	None
Base Indicator	Rigid
Bearing Grease Type	Polyrex EM (-20F +300F)
Blower	None
Current @ Voltage	23.000 A @ 208.0 V 21.200 A @ 230.0 V 10.600 A @ 460.0 V
Design Code	A
Drip Cover	No Drip Cover
Duty Rating	CONT
Efficiency @ 100% Load	91.7 %
Electrically Isolated Bearing	Not Electrically Isolated
Feedback Device	NO FEEDBACK
Heater Indicator	No Heater

Part detail

Revision	D
Type	AC
Mech. spec.	
Base	
Status	PRD/A
Elec. spec.	37WGS137
Layout	37LY-000-395
Eff. date	05-06-2026
CD Diagram	CD0005
Poles	02
Leads	9#14
Proprietary	False
Created date	10-08-2021

High Voltage Full Load Amps	10.6 a
Insulation Class	H
Inverter Code	Inverter Duty
KVA Code	L
Lifting Lugs	Standard Lifting Lugs
Locked Bearing Indicator	Locked Bearing
Motor Lead Termination	Flying Leads
Motor Standards	NEMA
Motor Type	3744M
Mounting Arrangement	F1
Number of Poles	2
Overall Length	20.68 IN
Power Factor	94
Product Family	WD All SS Encapsulated
Pulley End Bearing Type	Sealed Bearing
Pulley Face Code	C-Face
Rodent Screen	None
Service Factor	1.15
Shaft Diameter	1.375 IN
Shaft Ground Indicator	Shaft Grounding
Shaft Rotation	Reversible
Speed	3500 rpm
Speed Code	Single Speed
Starting Method	Direct on line
Thermal Device - Bearing	None
Thermal Device - Winding	None
Vibration Sensor Indicator	No Vibration Sensor
Winding Thermal 1	None
Winding Thermal 2	None

Nameplate

NP4292K01									
CAT.NO.	CFSWDM3711T-E-G								
SPEC.	37-0000-0431								
HP	10								
VOLTS	230/460								
AMPS	21.2/10.6								
R.P.M.	3500								
FRAME	215TC	HZ	60	PH	3				
SER.F.	1.15	CODE	L	DES.	A	CLASS	H		
NEMA NOM. EFF.	91.7	P.F.	94						
RATING	40C AMB-CONT								
CC	010A	USABLE AT 208V			N/A				
DE	6307	ODE	6307						
ENCL	TEFC	SN							
4:1CT, 10:1VT IP69									

AC Induction Motor Performance Data

Record # 57389

Typical performance - not guaranteed values

Winding: 37WGS137-R011		Type: 3744M		Enclosure: TEFC	
Nameplate Data			460 V, 60 Hz: High Voltage Connection		
Rated Output (HP)		10	Full Load Torque		15 LB-FT
Volts		230/460	Start Configuration		direct on line
Full Load Amps		21.2/10.6	Breakdown Torque		89.4 LB-FT
R.P.M.		3500	Pull-up Torque		39 LB-FT
Hz	60 Phase	3	Locked-rotor Torque		46.5 LB-FT
NEMA Design Code	A KVA Code	L	Starting Current		124 A
Service Factor (S.F.)		1.15	No-load Current		4.28 A
NEMA Nom. Eff.	91 Power Factor	94	Line-line Res. @ 25°C		0.659 Ω
Rating - Duty		40C AMB-CONT	Temp. Rise @ Rated Load		67°C
S.F. Amps		26/13	Temp. Rise @ S.F. Load		82°C
			Locked-rotor Power Factor		31.5
			Rotor inertia		0.402 lb-ft ²

Load Characteristics 460 V, 60 Hz, 10 HP

% of Rated Load	25	50	75	100	125	150	S.F.
Power Factor	56	77	86	91	91	92	91
Efficiency	81.8	88.7	90.2	91	90.1	89.7	90.5
Speed	3579	3557	3535	3510	3486	3459	3496
Line amperes	4.99	6.82	8.93	11.3	14.2	17	13

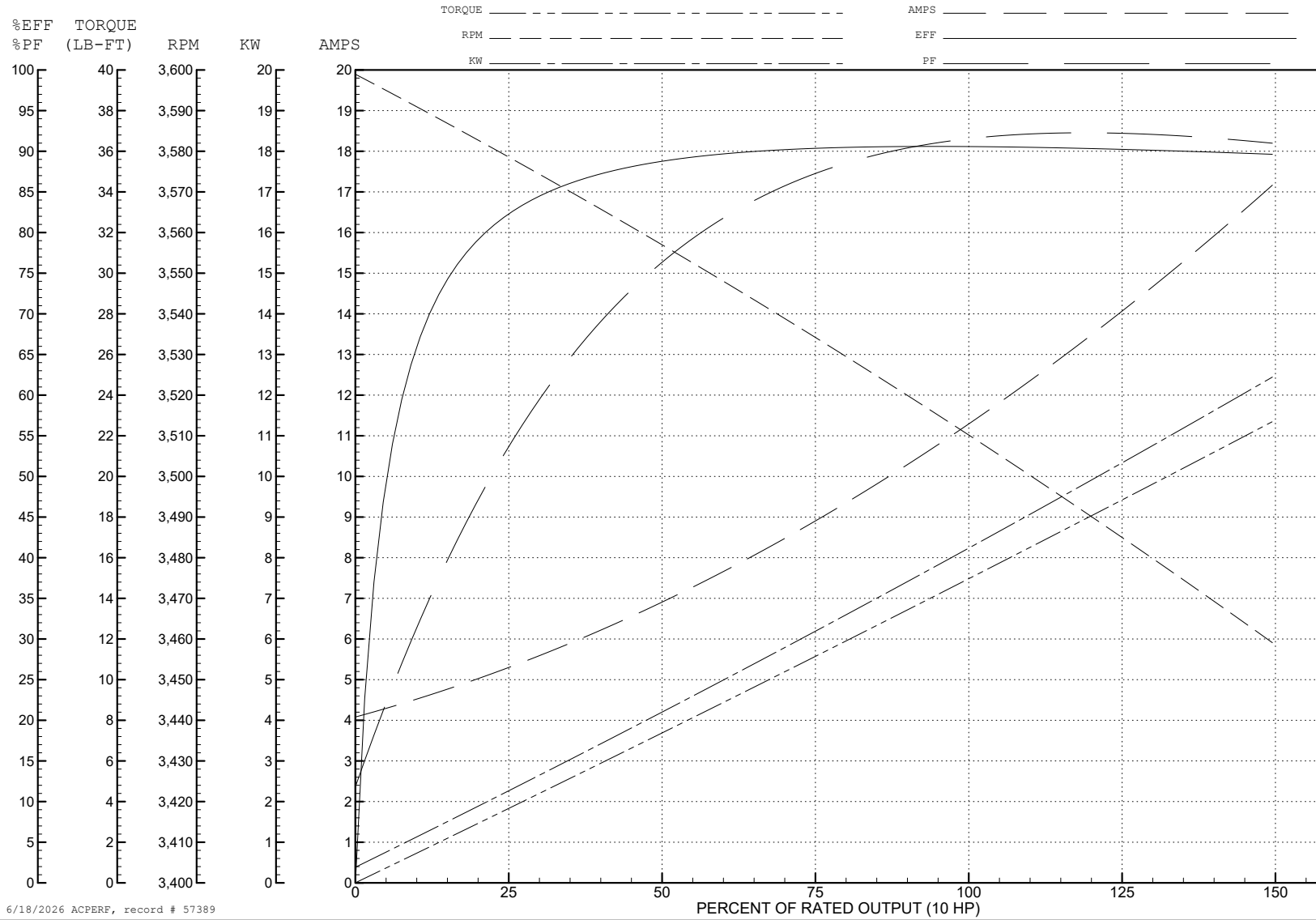
ABB Motors and Mechanical Inc.

WINDING # 37WGS137

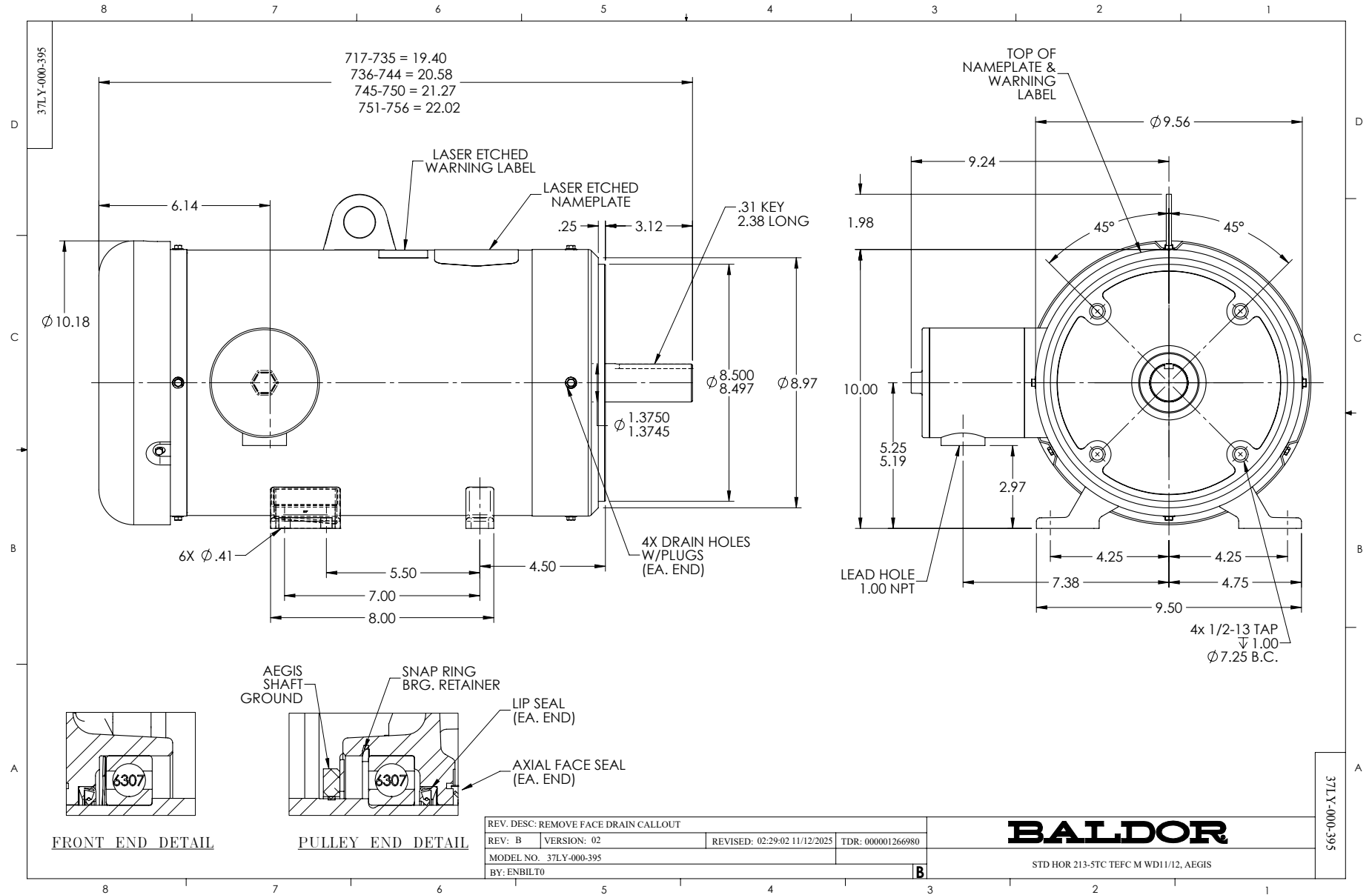
Typical performance - not guaranteed values.

10 HP 3 PH 60 HZ 3500 RPM 460 V 3744M

TORQUES (LB-FT): PO=89.4 PU=39 LR=46.5 LRA=124



6/18/2026 ACPERF, record # 57389



CD0005



LOW VOLTAGE
(2Y)



LINE

HIGH VOLTAGE
(1Y)



LINE

NOTES:

1. INTERCHANGE ANY TWO LINE LEADS TO REVERSE ROTATION.
2. OPTIONAL THERMOSTATS ARE PROVIDED WHEN SPECIFIED.
3. ACTUAL NUMBER OF INTERNAL PARALLEL CIRCUITS MAY BE A MULTIPLE OF THOSE SHOWN ABOVE.
4. LEAD COLORS ARE OPTIONAL. LEADS MUST ALWAYS BE NUMBERED AS SHOWN.

CD0005

REV. DESC: REVISE TO SHOW OPTIONAL COLORS			
REV. LTR: E	BY: JLP	REVISED: 01/19/99 10:15	TDR: 0171435
S00000		FILE: AAA00005140	MDL: -
		MTL: -	

BALDOR ELECTRIC Co.

3PH, DV, 9 LEADS