

BALDOR • RELIANCE

Customer information packet

CFSWDM3708T-E

5HP, 1165RPM, 3PH, 60HZ, 3756M, N

Class - None

Division - Not Applicable

Specifications

Enclosure	TEFC
Frame	213TC
Frame Material	Stainless Steel
Frequency	60.00 Hz
Motor Letter Type	Three Phase
Output @ Frequency	5.000 HP @ 60 HZ
Phase	3
Synchronous Speed @ Frequency	1200 RPM @ 60 HZ
Voltage @ Frequency	230.0 V @ 60 HZ 460.0 V @ 60 HZ
XP Class and Group	None
XP Division	Not Applicable
Agency Approvals	CSA CSA EEV NEMA PREMIUM UR
Ambient Temperature	40 °C
Auxillary Box	No Auxillary Box
Auxillary Box Lead Termination	None
Base Indicator	Rigid
Bearing Grease Type	Polyrex EM (-20F +300F)
Blower	None
Current @ Voltage	7.400 A @ 460.0 V 15.500 A @ 208.0 V 14.800 A @ 230.0 V
Design Code	A
Drip Cover	No Drip Cover
Duty Rating	CONT
Efficiency @ 100% Load	89.5 %
Electrically Isolated Bearing	Not Electrically Isolated
Feedback Device	NO FEEDBACK
Front Shaft Indicator	None

Part detail

Revision	C
Type	AC
Mech. spec.	37Q242
Base	
Status	PRD/A
Elec. spec.	37WGZ663
Layout	37LYQ242
Eff. date	09-22-2023
CD Diagram	CD0005
Poles	06
Leads	9#14
Proprietary	False
Created date	01-05-2021

Heater Indicator	No Heater
High Voltage Full Load Amps	7.4 a
Insulation Class	F
Inverter Code	Inverter Ready
KVA Code	R
Lifting Lugs	Standard Lifting Lugs
Locked Bearing Indicator	Locked Bearing
Motor Lead Quantity/Wire Size	9 @ 14 AWG
Motor Lead Termination	Flying Leads
Motor Standards	NEMA
Motor Type	3756M
Mounting Arrangement	F1
Number of Poles	6
Overall Length	22.12 IN
Power Factor	71
Product Family	WD All SD Non-Encapsulated
Pulley End Bearing Type	Sealed Bearing
Pulley Face Code	C-Face
Pulley Shaft Indicator	Standard
Rodent Screen	None
RoHS Status	ROHS COMPLIANT
Service Factor	1.15
Shaft Diameter	1.375 IN
Shaft Ground Indicator	No Shaft Grounding
Shaft Rotation	Reversible
Shaft Slinger Indicator	No Slinger
Speed	1165 rpm
Speed Code	Single Speed
Starting Method	Direct on line
Thermal Device - Bearing	None
Thermal Device - Winding	None
Vibration Sensor Indicator	No Vibration Sensor
Winding Thermal 1	None
Winding Thermal 2	None

Nameplate

NP4427AAA01											
CAT #	CFSWDM3708T-E				WT	179	LBS				
SPEC	37Q242Z663G1				ENCL	TEFC					
SER #					CC		IP	69			
HP	5		MAG CUR	8/4							
VOLTS	230/460				NEMA NOM. EFF	89.5					
AMPS	14.8/7.4				PF	71					
RATING	40C AMB-CONT										
RPM	1165				MAX RPM	1800					
FRAME	213TC	HZ	60	CODE	K	CLASS	H				
SER.F.	1.15	SF AMP				PH	3	DES	A		
DE	6307		ODE	6307							
LUBRICATION	POLYREX EM										
ID LOGO	INVERTER TYPE	VPWM	CHP	60	TO	90	1.5:1				
ID LOGO	WK2	1.39	CT	30	TO	60	2:1				
ID LOGO	SL HZ	1.8	VT	6	TO	60	10:1				
					QR						
YR											

AC Induction Motor Performance Data

Record # 86054

Preliminary Data Sheet

Winding: 37WGZ663-R001		Type: 3756M	Enclosure: TEFC
Nameplate Data		460 V, 60 Hz: High Voltage Connection	
Rated Output (HP)	5	Full Load Torque	22.57 LB-FT
Volts	230/460	Start Configuration	direct on line
Full Load Amps	14.8/7.4	Breakdown Torque	77.17 LB-FT
R.P.M.	1165	Pull-up Torque	44.95 LB-FT
Hz	60 Phase	Locked-rotor Torque	51.14 LB-FT
NEMA Design Code	A KVA Code	Starting Current	53.3 A
Service Factor (S.F.)	1.15	No-load Current	3.95 A
NEMA Nom. Eff.	89.5 Power Factor	Line-line Res. @ 25°C	1.43 Ω
Rating - Duty	40C AMB-CONT	Temp. Rise @ Rated Load	55°C
S.F. Amps		Temp. Rise @ S.F. Load	67°C
		Locked-rotor Power Factor	21.1
		Rotor inertia	1.39 lb-ft ²

Load Characteristics 460 V, 60 Hz, 5 HP

% of Rated Load	25	50	75	100	125	150	S.F.
Power Factor	33	52	64	71	75	76	73
Efficiency	84	89.5	90.1	90	89.1	87.3	89.5
Speed	1193	1185	1176	1167	1157	1144	1161
Line amperes	4.26	4.99	6.11	7.38	8.81	10.57	8.24

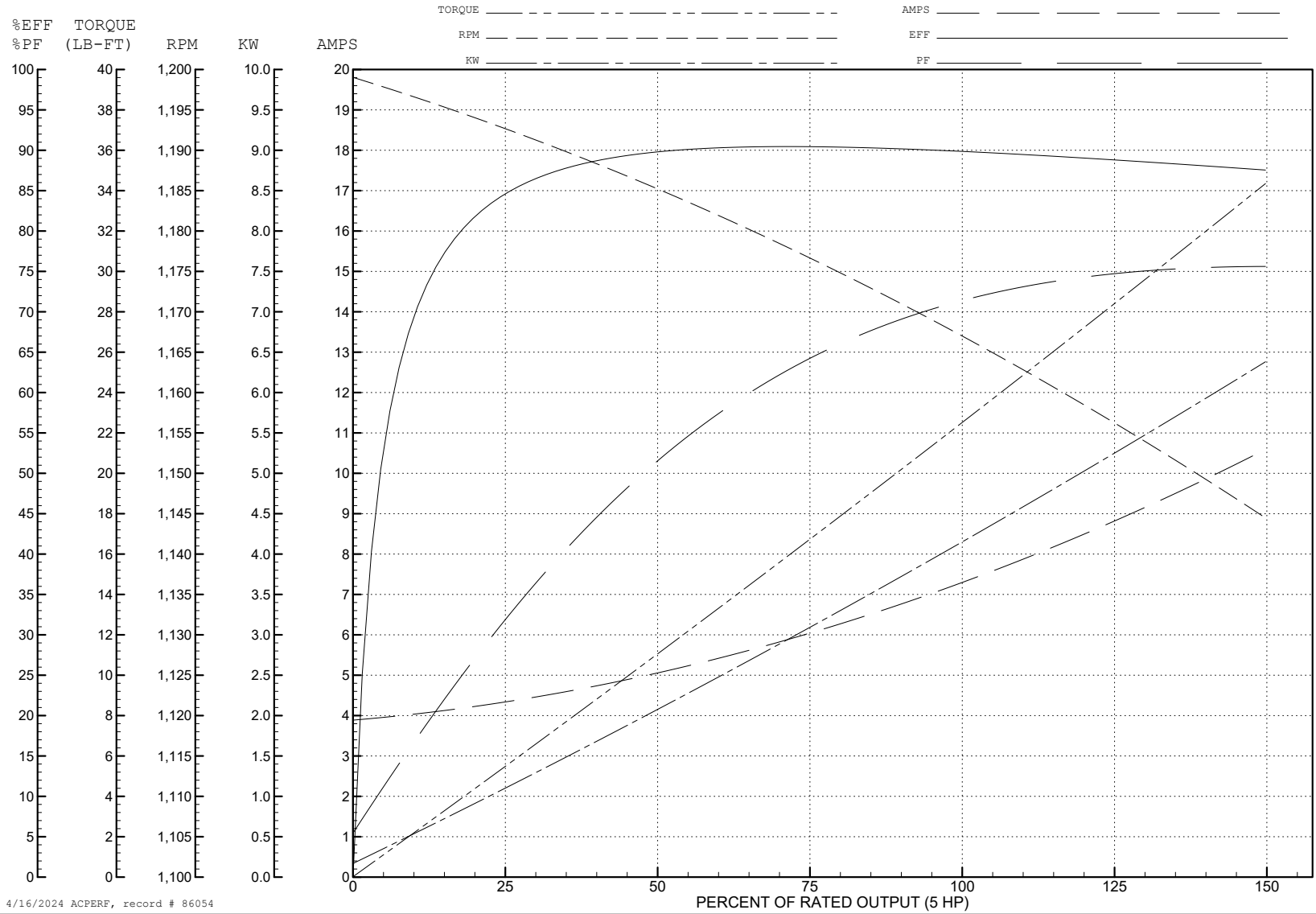
ABB Motors and Mechanical Inc.

WINDING # 37WGZ663

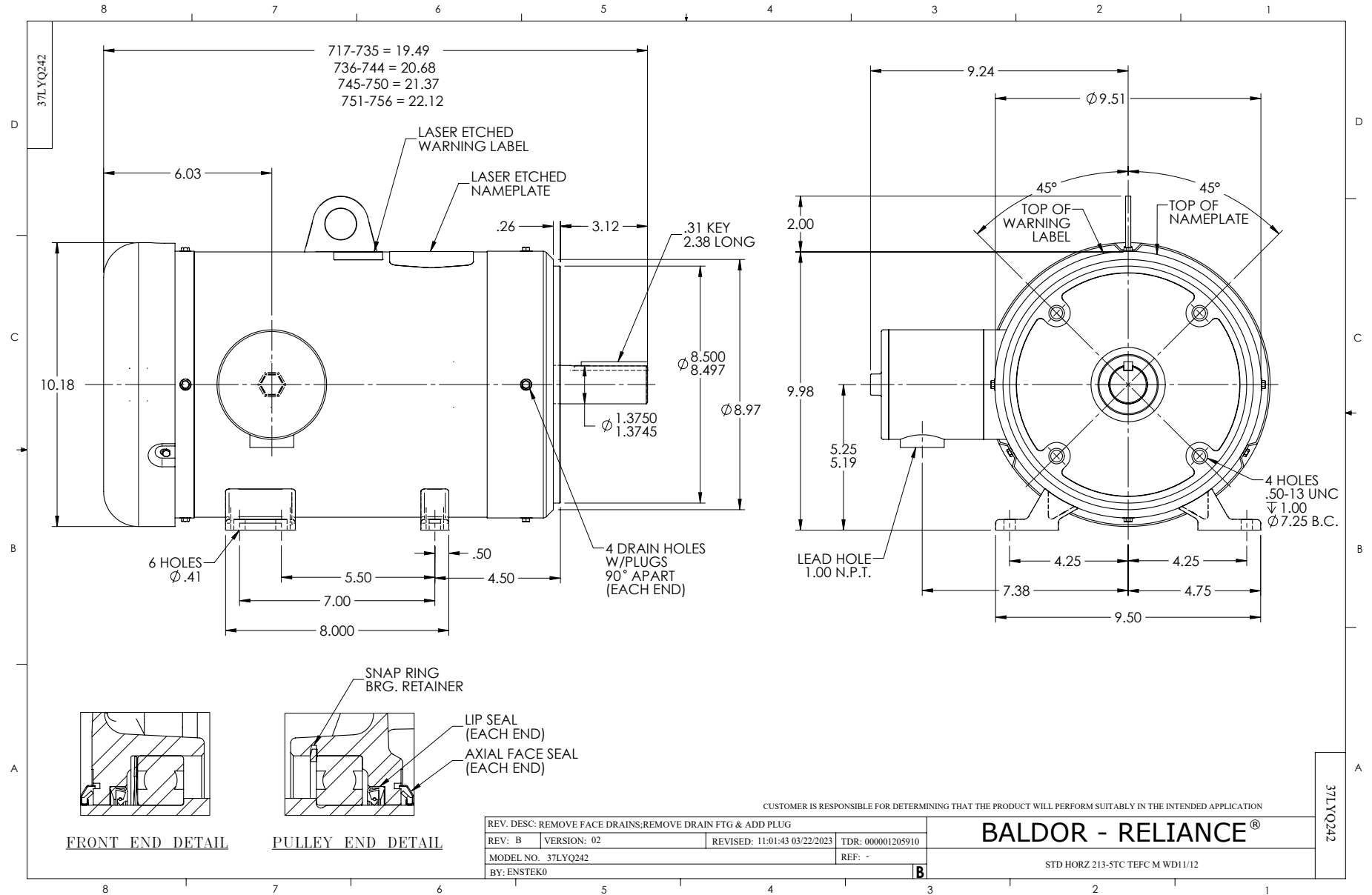
5 HP 3 PH 60 HZ 1165 RPM 460 V 3756M

Typical performance - not guaranteed values.

TORQUES (LB-FT): PO=77.17 PU=44.95 LR=51.14 LRA=53.3



4/16/2024 ACPERF, record # 86054



CD0005



LOW VOLTAGE
(2Y)



LINE

HIGH VOLTAGE
(1Y)



LINE

NOTES:

1. INTERCHANGE ANY TWO LINE LEADS TO REVERSE ROTATION.
2. OPTIONAL THERMOSTATS ARE PROVIDED WHEN SPECIFIED.
3. ACTUAL NUMBER OF INTERNAL PARALLEL CIRCUITS MAY BE A MULTIPLE OF THOSE SHOWN ABOVE.
4. LEAD COLORS ARE OPTIONAL. LEADS MUST ALWAYS BE NUMBERED AS SHOWN.

CD0005

REV. DESC: REVISE TO SHOW OPTIONAL COLORS			
REV. LTR: E	BY: JLP	REVISED: 01/19/99 10:15	TDR: 0171435
S00000		FILE: AAA00005140	MDL: -
		MTL: -	

BALDOR ELECTRIC Co.

3PH, DV, 9 LEADS