

**BALDOR • RELIANCE**

---

# Customer information packet

## CFSWDM3550-E

1.5HP, 3500RPM, 3PH, 60HZ, 56C, 3532M, TENV, F1

Class - None

Division - Not Applicable

## Specifications

|                                |   |
|--------------------------------|---|
| Enclosure                      | TENV  |
| Frame                          | 56C   |
| Frame Material                 | Stainless Steel   |
| Frequency                      | 60.00 Hz  |
| Haz Area Class and Group       | None  |
| Haz Area Division              | Not Applicable  |
| Motor Letter Type              | Three Phase   |
| Output @ Frequency             | 1.500 HP @ 60 HZ  |
| Phase                          | 3   |
| Synchronous Speed @ Frequency  | 3600 RPM @ 60 HZ  |
| Voltage @ Frequency            | 230.0 V @ 60 HZ<br>460.0 V @ 60 HZ                          |
| Agency Approvals               | UR<br>CSA   |
| Ambient Temperature            | 40 °C   |
| Auxillary Box                  | No Auxillary Box  |
| Auxillary Box Lead Termination | None  |
| Base Indicator                 | Rigid   |
| Bearing Grease Type            | Polyrex EM (-20F +300F)                                     |
| Blower                         | None  |
| Current @ Voltage              | 1.800 A @ 460.0 V<br>3.600 A @ 230.0 V<br>3.700 A @ 208.0 V |
| Design Code                    | B   |
| Drip Cover                     | No Drip Cover   |
| Duty Rating                    | CONT  |
| Efficiency @ 100% Load         | 85.5 %  |
| Electrically Isolated Bearing  | Not Electrically Isolated                                   |
| Feedback Device                | NO FEEDBACK   |
| Front Face Code                | Standard  |
| Front Shaft Indicator          | None  |
| Heater Indicator               | No Heater   |

## Part detail

|              |            |
|--------------|------------|
| Revision     | L          |
| Type         | AC         |
| Mech. spec.  | 35E4735    |
| Base         |            |
| Status       | PRD/A      |
| Elec. spec.  | 35WGR929   |
| Layout       | 35LYE4735  |
| Eff. date    | 08-14-2023 |
| CD Diagram   | CD0005     |
| Poles        | 02         |
| Leads        | 9#18 Y     |
| Proprietary  | False      |
| Created date | 07-18-2017 |

|                               |                        |
|-------------------------------|------------------------|
| High Voltage Full Load Amps   | 1.8 a                  |
| Insulation Class              | H                      |
| Inverter Code                 | Inverter Ready         |
| KVA Code                      | M                      |
| Lifting Lugs                  | No Lifting Lugs        |
| Locked Bearing Indicator      | Locked Bearing         |
| Motor Finish                  | UNPAINTED              |
| Motor Lead Exit               | Ko Box                 |
| Motor Lead Quantity/Wire Size | @ 0 AWG<br>9 @ 18 AWG  |
| Motor Lead Termination        | Flying Leads           |
| Motor Standards               | NEMA                   |
| Motor Type                    | 3532M                  |
| Mounting Arrangement          | F1                     |
| Number of Poles               | 2                      |
| Overall Length                | 13.67 IN               |
| Power Factor                  | 90                     |
| Product Family                | WD All SS Encapsulated |
| Pulley End Bearing Type       | Sealed Bearing         |
| Pulley Face Code              | C-Face                 |
| Pulley Shaft Indicator        | Standard               |
| Rodent Screen                 | None                   |
| RoHS Status                   | ROHS COMPLIANT         |
| Service Factor                | 1.15                   |
| Shaft Diameter                | 0.625 IN               |
| Shaft Extension Location      | Pulley End             |
| Shaft Ground Indicator        | No Shaft Grounding     |
| Shaft Rotation                | Reversible             |
| Shaft Slinger Indicator       | No Slinger             |
| Speed                         | 3500 rpm               |
| Speed Code                    | Single Speed           |
| Starting Method               | Direct on line         |
| Thermal Device - Bearing      | None                   |
| Thermal Device - Winding      | None                   |

| <b>Vibration Sensor Indicator</b> | <b>No Vibration Sensor</b> |
|-----------------------------------|----------------------------|
| <b>Winding Thermal 1</b>          | <b>None</b>                |
| <b>Winding Thermal 2</b>          | <b>None</b>                |

Nameplate

| NP4427AAA01        |                      |               |                |             |           |                      |      |            |    |  |  |
|--------------------|----------------------|---------------|----------------|-------------|-----------|----------------------|------|------------|----|--|--|
| <b>CAT #</b>       | CFSWDM3550-E         |               |                |             |           | <b>WT</b>            | 50   | <b>LBS</b> |    |  |  |
| <b>SPEC</b>        | 35E4735R929G2        |               |                |             |           | <b>ENCL</b>          | TENV |            |    |  |  |
| <b>SER #</b>       |                      |               |                |             |           | <b>CC</b>            | 010A | <b>IP</b>  | 69 |  |  |
| <b>HP</b>          | 1.5                  |               | <b>MAG CUR</b> | 1.3/.65     |           |                      |      |            |    |  |  |
| <b>VOLTS</b>       | 230/460              |               |                |             |           | <b>NEMA NOM. EFF</b> | 85.5 |            |    |  |  |
| <b>AMPS</b>        | 3.6/1.8              |               |                |             |           | <b>PF</b>            | 90   |            |    |  |  |
| <b>RATING</b>      | 40C AMB-CONT         |               |                |             |           |                      |      |            |    |  |  |
| <b>RPM</b>         | 3500                 |               |                |             |           | <b>MAX RPM</b>       | 5400 |            |    |  |  |
| <b>FRAME</b>       | 56C                  | <b>HZ</b>     | 60             | <b>CODE</b> | M         | <b>CLASS</b>         | H    |            |    |  |  |
| <b>SER.F.</b>      | 1.15                 | <b>SF AMP</b> |                |             |           | <b>PH</b>            | 3    | <b>DES</b> | B  |  |  |
| <b>DE</b>          | 6205                 |               | <b>ODE</b>     | 6205        |           |                      |      |            |    |  |  |
| <b>LUBRICATION</b> | POLYREX EM           |               |                |             |           |                      |      |            |    |  |  |
| <b>ID LOGO</b>     | <b>INVERTER TYPE</b> |               | <b>VPWM</b>    | <b>CHP</b>  | 60        | <b>TO</b>            | 90   | 1.5:1      |    |  |  |
| <b>ID LOGO</b>     | <b>WK2</b>           | 0.09          | <b>CT</b>      | 15          | <b>TO</b> | 60                   | 4:1  |            |    |  |  |
| <b>ID LOGO</b>     | <b>SL HZ</b>         | 1.7           | <b>VT</b>      | 3           | <b>TO</b> | 60                   | 20:1 |            |    |  |  |
|                    |                      |               |                |             |           | <b>QR</b>            |      |            |    |  |  |
| <b>YR</b>          |                      |               |                |             |           |                      |      |            |    |  |  |

**AC Induction Motor Performance Data**

Record # 20333

Typical performance - not guaranteed values

| <b>Winding: 35WGR929-R003</b> |                   | <b>Type: 3532M</b>         |  | <b>Enclosure: TENV</b>    |  |
|-------------------------------|-------------------|----------------------------|--|---------------------------|--|
| <b>Nameplate Data</b>         |                   |                            | <b>460 V, 60 Hz:<br/>High Voltage Connection</b> |                           |  |
| <b>Rated Output (HP)</b>      | 1.5               | <b>Full Load Torque</b>    | 2.31 LB-FT                                       |                           |  |
| <b>Volts</b>                  | 208-230/460       | <b>Start Configuration</b> | direct on line                                   |                           |  |
| <b>Full Load Amps</b>         | 3.7-3.6/1.8       | <b>Breakdown Torque</b>    | 10.9 LB-FT                                       |                           |  |
| <b>R.P.M.</b>                 | 3500              | <b>Pull-up Torque</b>      | 5.2 LB-FT  |                           |  |
| <b>Hz</b>                     | 60 <b>Phase</b>   | 3                          | <b>Locked-rotor Torque</b>                       | 10.2 LB-FT                |  |
| <b>NEMA Design Code</b>       | <b>B KVA Code</b> | M                          | <b>Starting Current</b>                          | 20.6 A                    |  |
| <b>Service Factor (S.F.)</b>  | 1.15              |                            | <b>No-load Current</b>                           | 0.694 A                   |  |
| <b>NEMA Nom. Eff.</b>         | 85.5              | <b>Power Factor</b>        | 90   |                           |  |
| <b>Rating - Duty</b>          | 40C AMB-CONT      |                            | <b>Temp. Rise @ Rated Load</b>                   | 78°C                      |  |
| <b>S.F. Amps</b>              |                   |                            | <b>Temp. Rise @ S.F. Load</b>                    | 90°C                      |  |
|                               |                   |                            | <b>Locked-rotor Power Factor</b>                 | 46                        |  |
|                               |                   |                            | <b>Rotor inertia</b>                             | 0.0885 LB-FT <sup>2</sup> |  |

**Load Characteristics 460 V, 60 Hz, 1.5 HP**

| <b>% of Rated Load</b> | <b>25</b> | <b>50</b> | <b>75</b> | <b>100</b> | <b>125</b> | <b>150</b> | <b>S.F.</b> |
|------------------------|-----------|-----------|-----------|------------|------------|------------|-------------|
| <b>Power Factor</b>    | 55        | 77        | 86        | 92         | 93         | 90         | 93          |
| <b>Efficiency</b>      | 73.8      | 82.3      | 85.2      | 86.1       | 85.9       | 85.5       | 86          |
| <b>Speed</b>           | 3564      | 3536      | 3507      | 3476       | 3444       | 3406       | 3457        |
| <b>Line amperes</b>    | 0.907     | 1.15      | 1.48      | 1.81       | 2.23       | 2.75       | 2.06        |

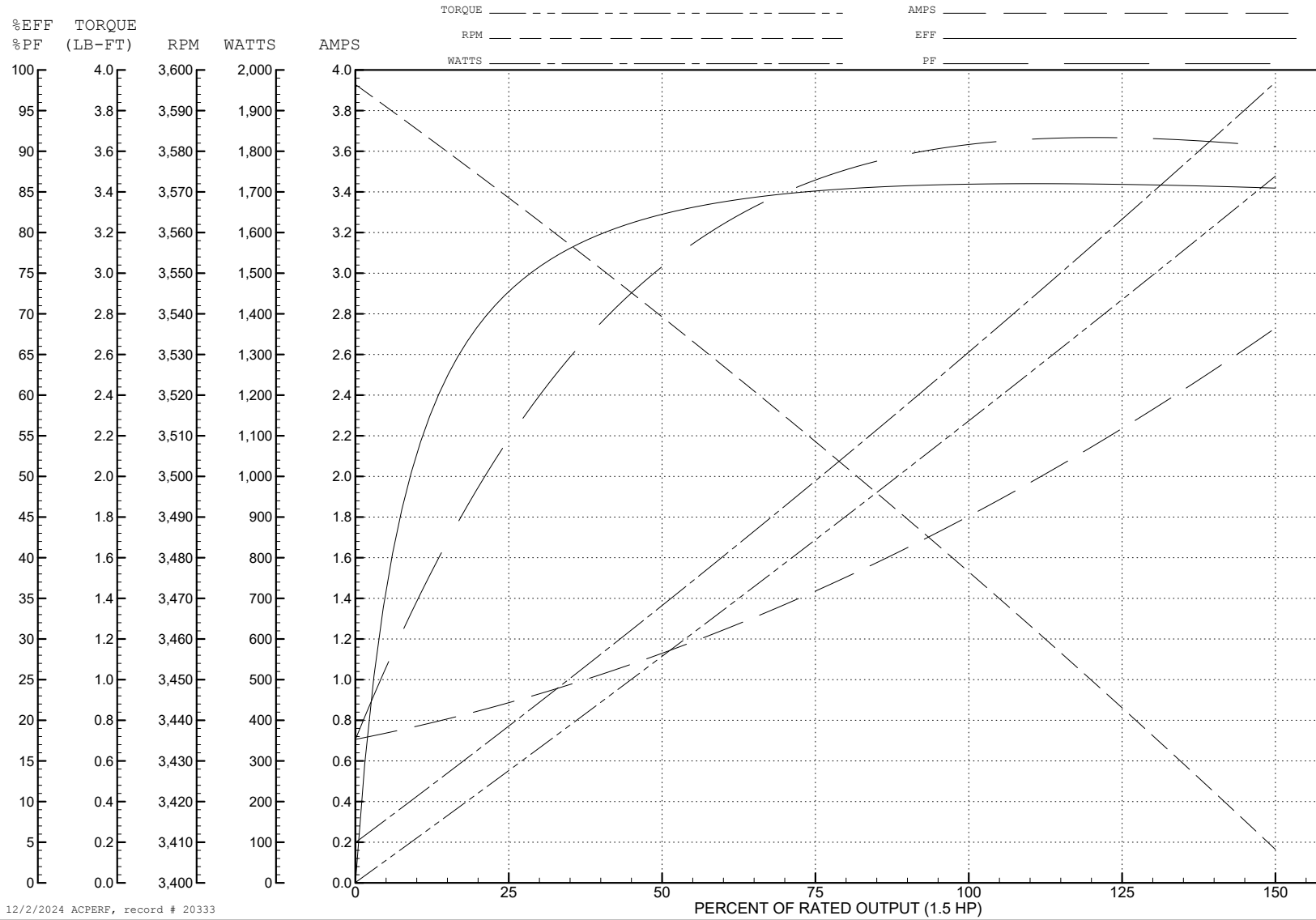
ABB Motors and Mechanical Inc.

WINDING # 35WGR929

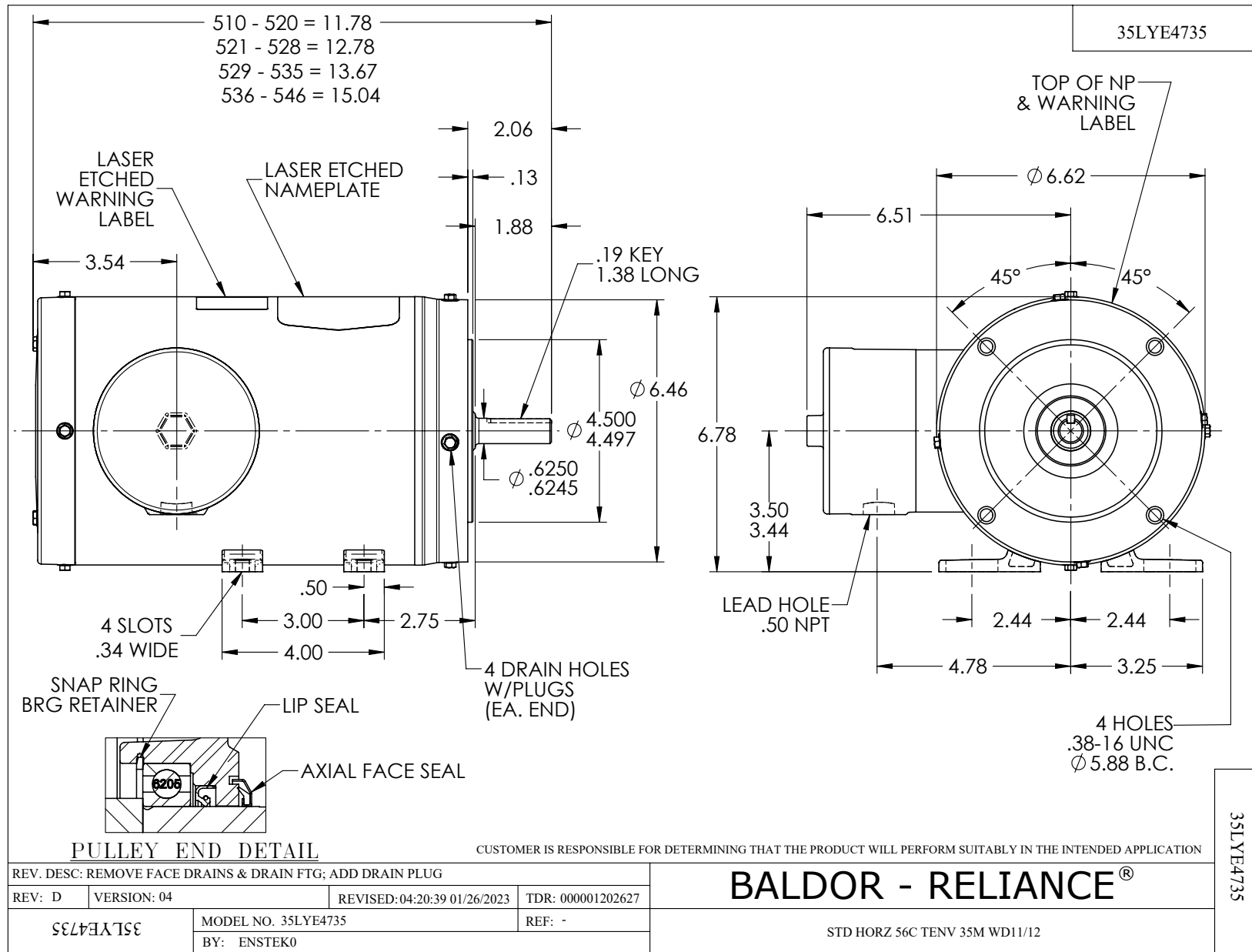
1.5 HP 3 PH 60 HZ 3500 RPM 460 V 3532M

Typical performance - not guaranteed values.

TORQUES (LB-FT): PO=10.9 PU=5.2 LR=10.2 LRA=20.6



12/2/2024 ACPERF, record # 20333

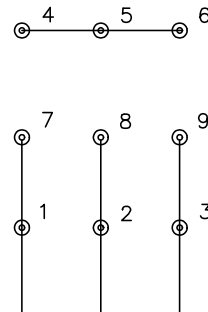




CD0005

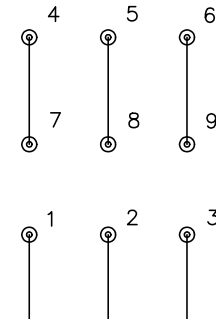


LOW VOLTAGE  
(2Y)



LINE

HIGH VOLTAGE  
(1Y)



LINE

**NOTES:**

1. INTERCHANGE ANY TWO LINE LEADS TO REVERSE ROTATION.
2. OPTIONAL THERMOSTATS ARE PROVIDED WHEN SPECIFIED.
3. ACTUAL NUMBER OF INTERNAL PARALLEL CIRCUITS MAY BE A MULTIPLE OF THOSE SHOWN ABOVE.
4. LEAD COLORS ARE OPTIONAL. LEADS MUST ALWAYS BE NUMBERED AS SHOWN.

CD0005

|   |         |                         |              |
|---|---------|-------------------------|--------------|
| REV. DESC: REVISE TO SHOW OPTIONAL COLORS |         |                         |              |
| REV. LTR: E                               | BY: JLP | REVISED: 01/19/99 10:15 | TDR: 0171435 |
| S00000                                    |         | FILE: AAA00005140       | MDL: -       |
|   |         | MTL: -                  |              |

**BALDOR ELECTRIC Co.**

3PH, DV, 9 LEADS