

**BALDOR • RELIANCE**

---

# Customer information packet

## CFSWDM3542-E-G

0.75HP, 1760RPM, 3PH, 60HZ, 56C, 3522M, TENV, F

Class - None

Division - Not Applicable

## Specifications

Enclosure	TENV
Frame	56C
Frame Material	Stainless Steel
Frequency	60.00 Hz
Motor Letter Type	Three Phase
Output @ Frequency	.750 HP @ 60 HZ
Phase	3
Synchronous Speed @ Frequency	1800 RPM @ 60 HZ
Voltage @ Frequency	208.0 V @ 60 HZ 230.0 V @ 60 HZ 460.0 V @ 60 HZ
XP Class and Group	None
XP Division	Not Applicable
Agency Approvals	CSA UR
Ambient Temperature	40 °C
Auxillary Box	No Auxillary Box
Auxillary Box Lead Termination	None
Base Indicator	Rigid
Bearing Grease Type	Polyrex EM (-20F +300F)
Blower	None
Current @ Voltage	2.600 A @ 208.0 V 1.300 A @ 230.0 V
Design Code	B
Drip Cover	No Drip Cover
Duty Rating	CONT
Efficiency @ 100% Load	84.0 %
Electrically Isolated Bearing	Not Electrically Isolated
Feedback Device	NO FEEDBACK
Heater Indicator	No Heater
High Voltage Full Load Amps	1.3 a
Insulation Class	H

## Part detail

Revision	E
Type	AC
Mech. spec.	
Base	
Status	PRD/A
Elec. spec.	35WGP564
Layout	35LY-000-648
Eff. date	05-12-2023
CD Diagram	CD0005
Poles	04
Leads	9#18
Proprietary	False
Created date	09-29-2021

<b>Inverter Code</b>	Inverter Ready
<b>KVA Code</b>	N
<b>Lifting Lugs</b>	No Lifting Lugs
<b>Locked Bearing Indicator</b>	Locked Bearing
<b>Motor Finish</b>	UNPAINTED
<b>Motor Lead Termination</b>	Flying Leads
<b>Motor Standards</b>	NEMA
<b>Motor Type</b>	3522M
<b>Mounting Arrangement</b>	F1
<b>Number of Poles</b>	4
<b>Overall Length</b>	12.78 IN
<b>Power Factor</b>	70
<b>Product Family</b>	WD All SS Encapsulated
<b>Pulley Face Code</b>	C-Face
<b>Rodent Screen</b>	None
<b>Service Factor</b>	1.15
<b>Shaft Diameter</b>	0.625 IN
<b>Shaft Ground Indicator</b>	Shaft Grounding
<b>Shaft Rotation</b>	Reversible
<b>Speed</b>	1760 rpm
<b>Speed Code</b>	Single Speed
<b>Starting Method</b>	Direct on line
<b>Thermal Device - Bearing</b>	None
<b>Thermal Device - Winding</b>	None
<b>Vibration Sensor Indicator</b>	No Vibration Sensor
<b>Winding Thermal 1</b>	None
<b>Winding Thermal 2</b>	None

**Nameplate**

<b>NP4293A01</b>									
<b>CAT.NO.</b>	CFSWDM3542-E-G								
<b>SPEC.</b>	35-0000-1311								
<b>HP</b>	.75								
<b>VOLTS</b>	208-230/460								
<b>AMPS</b>	2.6/1.3								
<b>R.P.M.</b>	1760								
<b>FRAME</b>	56C		<b>HZ</b>	60		<b>PH</b>	3		
<b>SER.F.</b>	1.15		<b>CODE</b>	N	<b>DES.</b>	B	<b>CLASS</b>	H	
<b>NEMA NOM. EFF.</b>	84		<b>P.F.</b>	70					
<b>RATING</b>	40C AMB-CONT								
<b>CC</b>			<b>USABLE AT 208V</b>				N/A		
<b>DE</b>	6205		<b>ODE</b>	6205					
<b>ENCL</b>	TENV	<b>SN</b>							
	4:1CT, 10:1VT, IP69								

**AC Induction Motor Performance Data**

Record # 39345

Typical performance - not guaranteed values

Winding: 35WGP564-R005		Type: 3522M		Enclosure: TENV	
<b>Nameplate Data</b>			<b>460 V, 60 Hz: High Voltage Connection</b>		
Rated Output (HP)	.75	Full Load Torque	2.24 LB-FT		
Volts	208-230/460	Start Configuration	direct on line		
Full Load Amps	2.6/1.3	Breakdown Torque	11.1 LB-FT		
R.P.M.	1760	Pull-up Torque	5.62 LB-FT		
Hz	60	Locked-rotor Torque	8.1 LB-FT		
NEMA Design Code	B	Starting Current	11.1 A		
Service Factor (S.F.)	1.15	No-load Current	0.774 A		
NEMA Nom. Eff.	84	Line-line Res. @ 25°C	16 Ω		
Rating - Duty	40C AMB-CONT	Temp. Rise @ Rated Load	60°C		
S.F. Amps		Temp. Rise @ S.F. Load	69°C		
		Locked-rotor Power Factor	51.3		
		Rotor inertia	0.13 LB-FT <sup>2</sup>		

**Load Characteristics 460 V, 60 Hz, 0.75 HP**

% of Rated Load	25	50	75	100	125	150	S.F.
Power Factor	32	49	62	69	76	81	69
Efficiency	71.7	81	84.4	85.4	85.2	84.9	84.2
Speed	1790	1782	1774	1765	1755	1744	1752
Line amperes	0.808	0.891	1.01	1.19	1.36	1.54	1.39

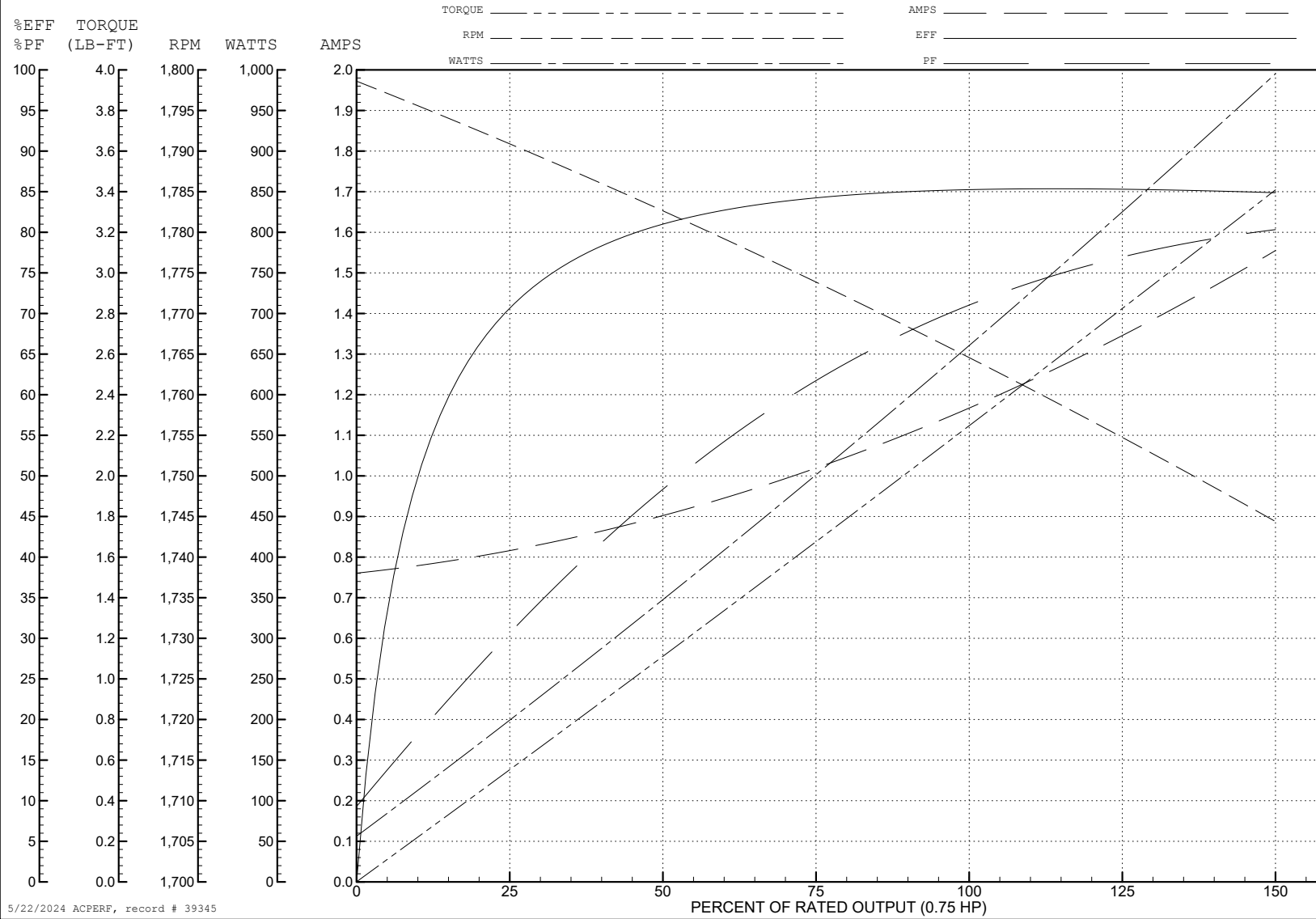
ABB Motors and Mechanical Inc.

WINDING # 35WGP564

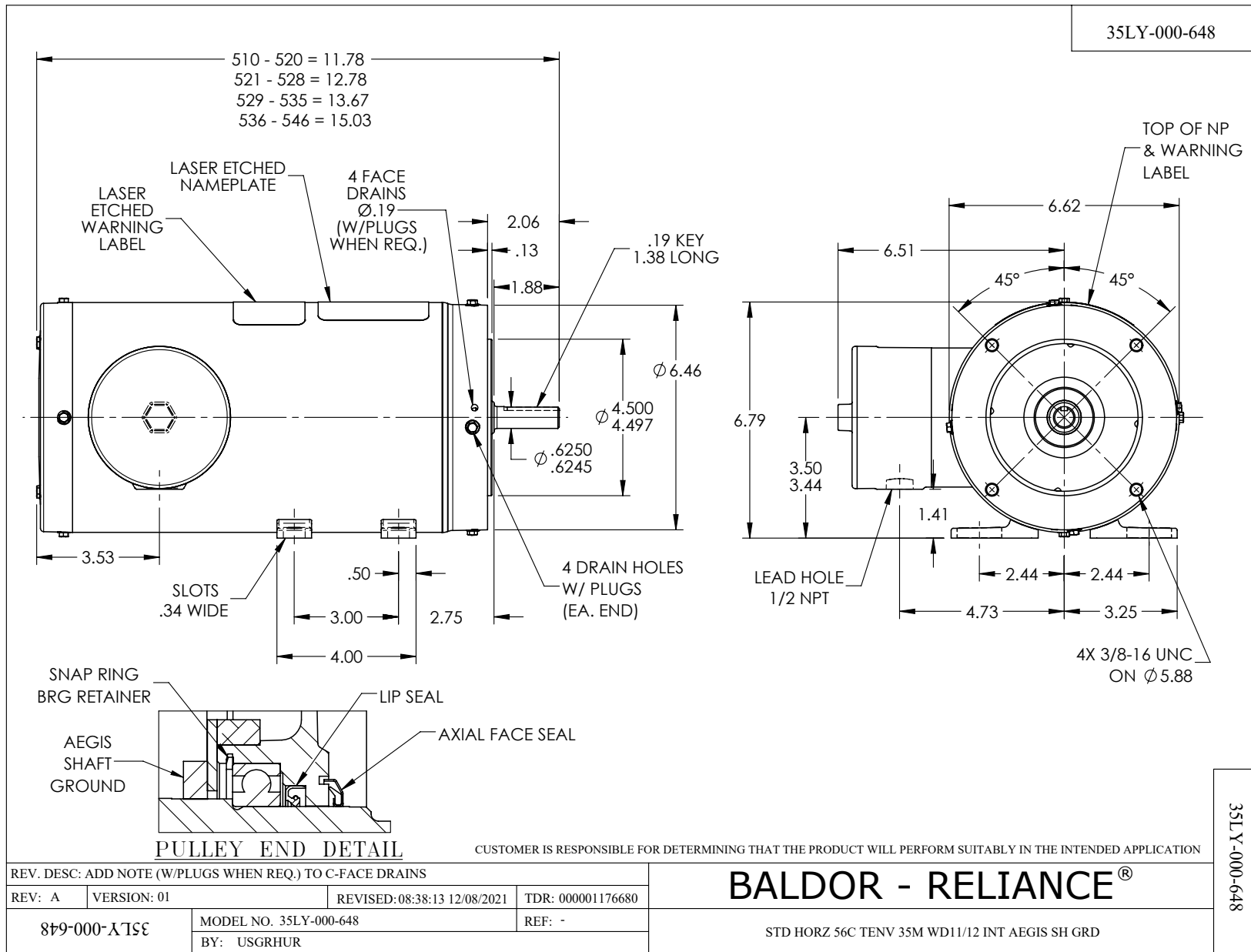
0.75 HP 3 PH 60 HZ 1760 RPM 460 V 3522M

Typical performance - not guaranteed values.

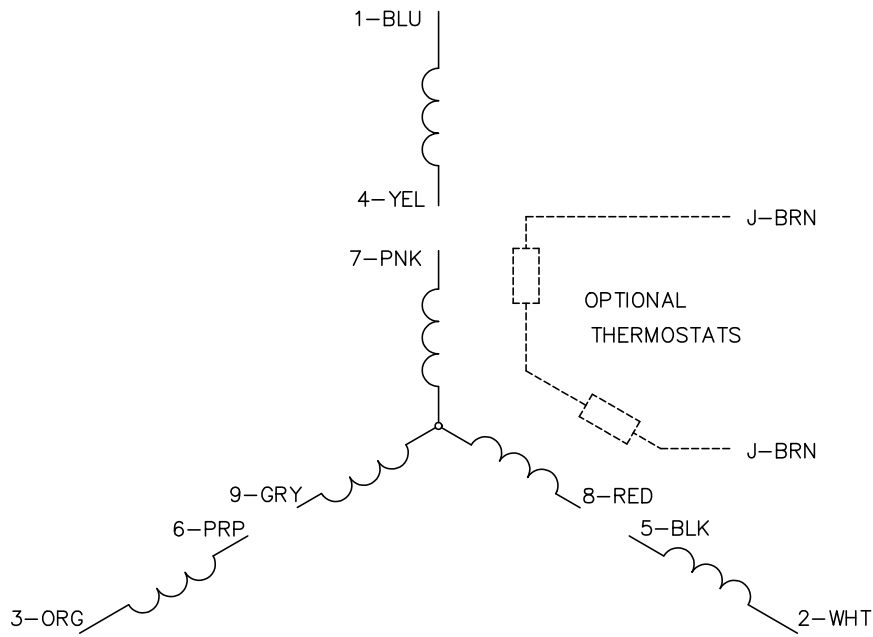
TORQUES (LB-FT): PO=11.1 PU=5.62 LR=8.1 LRA=11.1



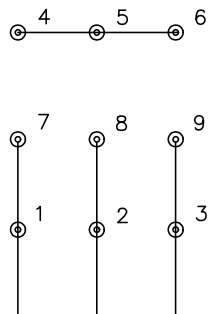
5/22/2024 ACPERF, record # 39345



CD0005

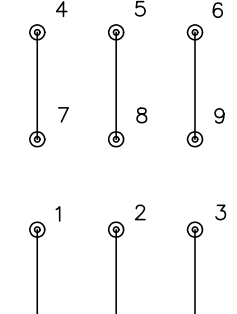


LOW VOLTAGE  
(2Y)



LINE

HIGH VOLTAGE  
(1Y)



LINE

**NOTES:**

1. INTERCHANGE ANY TWO LINE LEADS TO REVERSE ROTATION.
2. OPTIONAL THERMOSTATS ARE PROVIDED WHEN SPECIFIED.
3. ACTUAL NUMBER OF INTERNAL PARALLEL CIRCUITS MAY BE A MULTIPLE OF THOSE SHOWN ABOVE.
4. LEAD COLORS ARE OPTIONAL. LEADS MUST ALWAYS BE NUMBERED AS SHOWN.

CD0005

REV. DESC: REVISE TO SHOW OPTIONAL COLORS			
REV. LTR: E	BY: JLP	REVISED: 01/19/99 10:15	TDR: 0171435
S00000		FILE: AAA00005140	MDL: -
		MTL: -	

**BALDOR ELECTRIC Co.**

3PH, DV, 9 LEADS