



Customer information packet

CFSWDM3541-E

.75HP, 3500RPM, 3PH, 60HZ, 56C, 3520M, TENV, F1

Class - None

Division - Not Applicable

Specifications

Enclosure	TENV
Frame	56C
Frame Material	Stainless Steel
Frequency	60.00 Hz
Motor Letter Type	Three Phase
Output @ Frequency	.750 HP @ 60 HZ
Phase	3
Synchronous Speed @ Frequency	3600 RPM @ 60 HZ
Voltage @ Frequency	460.0 V @ 60 HZ 230.0 V @ 60 HZ 208.0 V @ 60 HZ
XP Class and Group	None
XP Division	Not Applicable
Agency Approvals	CSA UR
Ambient Temperature	40 °C
Auxillary Box	No Auxillary Box
Auxillary Box Lead Termination	None
Base Indicator	Rigid
Bearing Grease Type	Polyrex EM (-20F +300F)
Blower	None
Current @ Voltage	2.100 A @ 208.0 V 2.000 A @ 230.0 V 1.000 A @ 460.0 V
Design Code	B
Drip Cover	No Drip Cover
Duty Rating	CONT
Efficiency @ 100% Load	86.5 %
Electrically Isolated Bearing	Not Electrically Isolated
Feedback Device	NO FEEDBACK
Front Face Code	Standard
Front Shaft Indicator	None

Part detail

Revision	K
Type	AC
Mech. spec.	35E4735
Base	
Status	PRD/A
Elec. spec.	35WGP070
Layout	35LYE4735
Eff. date	08-14-2023
CD Diagram	CD0005
Poles	02
Leads	9#18 15" lead length,0#0 dbl dip & bake,0#0 phase insulaY
Proprietary	False
Created date	07-18-2017

Heater Indicator	No Heater
High Voltage Full Load Amps	1.0 a
Insulation Class	H
Inverter Code	Inverter Ready
KVA Code	M
Lifting Lugs	No Lifting Lugs
Locked Bearing Indicator	Locked Bearing
Motor Finish	UNPAINTED
Motor Lead Exit	Ko Box
Motor Lead Quantity/Wire Size	@ 0 AWG 9 @ 18 AWG
Motor Lead Termination	Flying Leads
Motor Standards	NEMA
Motor Type	3520M
Mounting Arrangement	F1
Number of Poles	2
Overall Length	11.78 IN
Power Factor	85
Product Family	WD All SS Encapsulated
Pulley End Bearing Type	Sealed Bearing
Pulley Face Code	C-Face
Pulley Shaft Indicator	Standard
Rodent Screen	None
RoHS Status	ROHS COMPLIANT
Service Factor	1.15
Shaft Diameter	0.625 IN
Shaft Extension Location	Pulley End
Shaft Ground Indicator	No Shaft Grounding
Shaft Rotation	Reversible
Shaft Slinger Indicator	No Slinger
Speed	3500 rpm
Speed Code	Single Speed
Starting Method	Direct on line
Thermal Device - Bearing	None

Thermal Device - Winding	None
Vibration Sensor Indicator	No Vibration Sensor
Winding Thermal 1	None
Winding Thermal 2	None

Nameplate

NP4427AAA01									
CAT #	CFSWDM3541-E			WT	41	LBS			
SPEC	35E4735P070G1			ENCL	TENV				
SER #				CC	010A	IP	69		
HP	.75	MAG CUR	1/5						
VOLTS	208-230/460			NEMA NOM. EFF	86.5				
AMPS	2.1-2/1			PF	85				
RATING	40C AMB-CONT								
RPM	3500			MAX RPM	5400				
FRAME	56C	HZ	60	CODE	M	CLASS	H		
SER.F.	1.15	SF AMP	2.4-2.2/1.1		PH	3	DES	B	
DE	6205		ODE	6205					
LUBRICATION	POLYREX EM								
ID LOGO	INVERTER TYPE	VPWM	CHP	60	TO	90	1.5:1		
ID LOGO	WK2	0.06	CT	15	TO	60	4:1		
ID LOGO	SL HZ	1.7	VT	3	TO	60	20:1		
				QR					
YR									

AC Induction Motor Performance Data

Record # 63249

Typical performance - not guaranteed values

Winding: 35WGP070-R004		Type: 3520M	Enclosure: TENV		
Nameplate Data			460 V, 60 Hz: High Voltage Connection		
Rated Output (HP)	.75	Full Load Torque	1.13 LB-FT		
Volts	208-230/460	Start Configuration	direct on line		
Full Load Amps	2.1-2/1	Breakdown Torque	5.62 LB-FT		
R.P.M.	3500	Pull-up Torque	2.68 LB-FT		
Hz	60 Phase	3	Locked-rotor Torque	4.74 LB-FT	
NEMA Design Code	B	KVA Code	M	Starting Current	10.4 A
Service Factor (S.F.)	1.15	No-load Current	0.45 A		
NEMA Nom. Eff.	86.5	Power Factor	85	Line-line Res. @ 25°C	16.9 Ω
Rating - Duty	40C	AMB-CONT	Temp. Rise @ Rated Load	56°C	
S.F. Amps	2.4-2.2/1.1	Temp. Rise @ S.F. Load	65°C		
		Locked-rotor Power Factor	51.2		
		Rotor inertia	0.0553 LB-FT ²		

Load Characteristics 460 V, 60 Hz, 0.75 HP

% of Rated Load	25	50	75	100	125	150	S.F.
Power Factor	47	67	79	85	88	90	87
Efficiency	73.7	82.6	84.9	85.8	84.9	83.9	85.3
Speed	3570	3547	3519	3492	3462	3430	3474
Line amperes	0.509	0.626	0.788	0.966	1.17	1.39	1.09

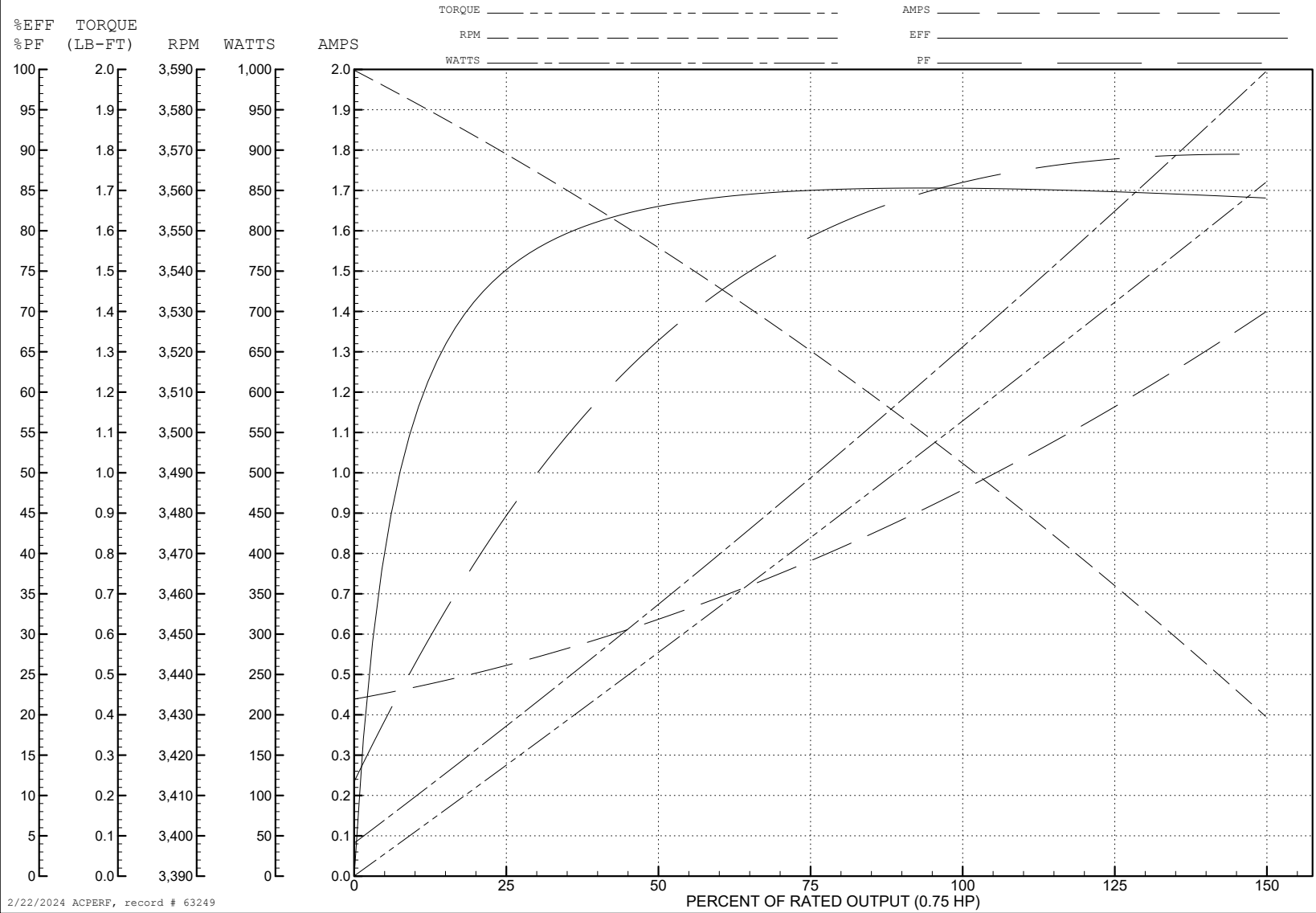
ABB Motors and Mechanical Inc.

WINDING # 35WGP070

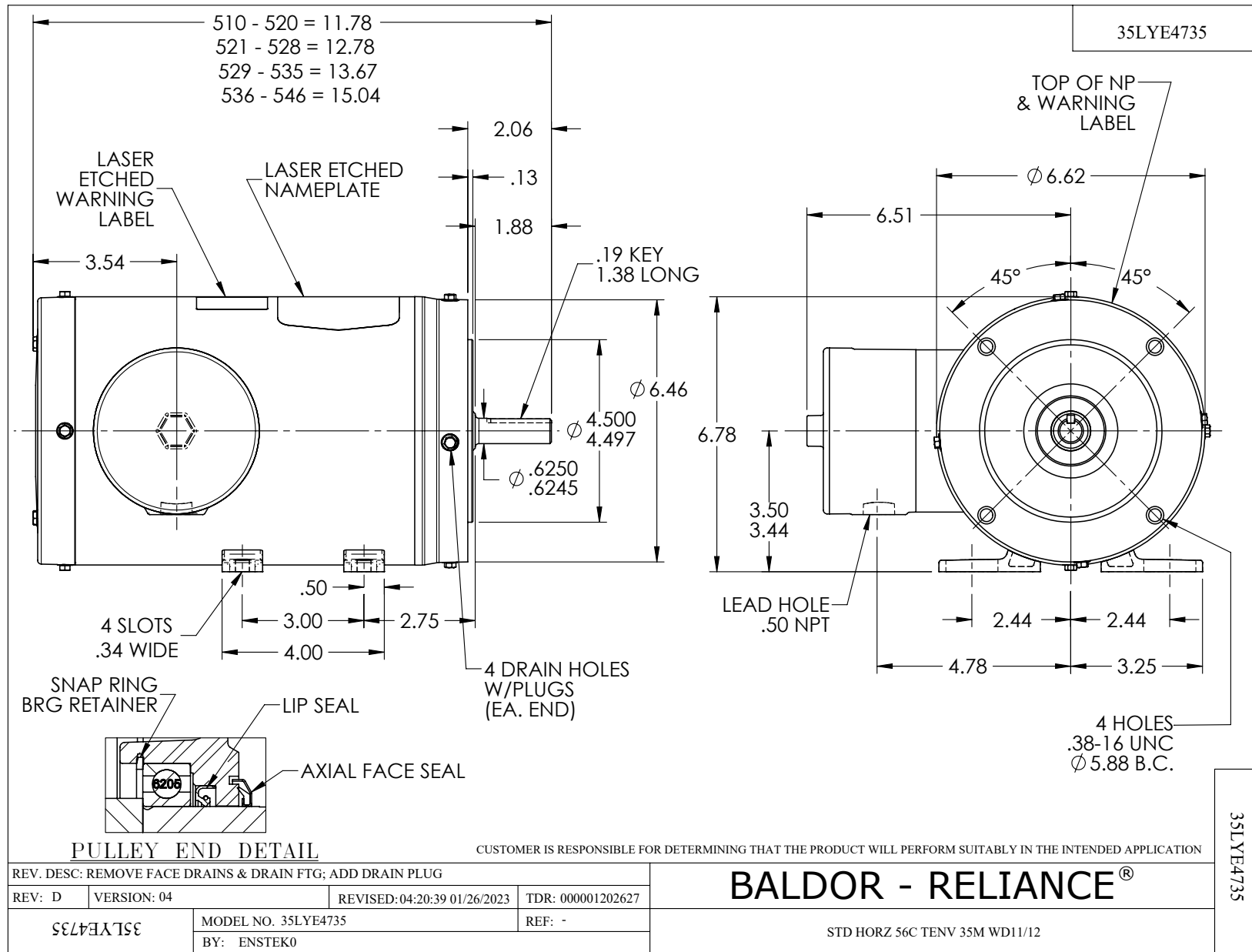
0.75 HP 3 PH 60 HZ 3500 RPM 460 V 3520M

Typical performance - not guaranteed values.

TORQUES (LB-FT): PO=5.62 PU=2.68 LR=4.74 LRA=10.4



2/22/2024 ACPERF, record # 63249



CD0005

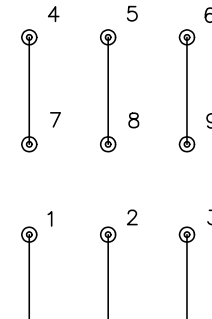


LOW VOLTAGE
(2Y)



LINE

HIGH VOLTAGE
(1Y)



LINE

NOTES:

1. INTERCHANGE ANY TWO LINE LEADS TO REVERSE ROTATION.
2. OPTIONAL THERMOSTATS ARE PROVIDED WHEN SPECIFIED.
3. ACTUAL NUMBER OF INTERNAL PARALLEL CIRCUITS MAY BE A MULTIPLE OF THOSE SHOWN ABOVE.
4. LEAD COLORS ARE OPTIONAL. LEADS MUST ALWAYS BE NUMBERED AS SHOWN.

CD0005

REV. DESC: REVISE TO SHOW OPTIONAL COLORS			
REV. LTR: E	BY: JLP	REVISED: 01/19/99 10:15	TDR: 0171435
S00000		FILE: AAA00005140	MDL: -
		MTL: -	

BALDOR ELECTRIC Co.

3PH, DV, 9 LEADS