

# ABB BALDOR RELIANCE III

---

## Customer information packet

### CFSWDM3538-E

.5HP, 1770RPM, 3PH, 60HZ, 56C, 3512M, TENV, F1

Class - None

Division - Not Applicable

**Specifications**

<b>Enclosure</b>	TENV
<b>Frame</b>	56C
<b>Frame Material</b>	Stainless Steel
<b>Frequency</b>	60.00 Hz
<b>Haz Area Class and Group</b>	None
<b>Haz Area Division</b>	Not Applicable
<b>Motor Letter Type</b>	Three Phase
<b>Output @ Frequency</b>	.500 HP @ 60 HZ
<b>Phase</b>	3
<b>Synchronous Speed @ Frequency</b>	1800 RPM @ 60 HZ
<b>Voltage @ Frequency</b>	460.0 V @ 60 HZ 230.0 V @ 60 HZ 208.0 V @ 60 HZ
<b>Agency Approvals</b>	CSA UR
<b>Ambient Temperature</b>	40 °C
<b>Auxiliary Box</b>	NO AUXILLARY BOX
<b>Auxiliary Box Lead Termination</b>	None
<b>Base Indicator</b>	Rigid
<b>Bearing Grease Type</b>	Polyrex EM (-20F +300F)
<b>Blower</b>	None
<b>Current @ Voltage</b>	1.900 A @ 208.0 V 1.800 A @ 230.0 V .900 A @ 460.0 V
<b>Design Code</b>	B
<b>Drip Cover</b>	No Drip Cover
<b>Duty Rating</b>	CONT
<b>Efficiency @ 100% Load</b>	80.0 %
<b>Electrically Isolated Bearing</b>	Not Electrically Isolated
<b>Feedback Device</b>	NO FEEDBACK
<b>Front Shaft Indicator</b>	None
<b>Heater Indicator</b>	No Heater

**Part Detail**

<b>Revision</b>	E
<b>Type</b>	AC
<b>Mech. spec.</b>	35E4735
<b>Base</b>	
<b>Status</b>	PRD/A
<b>Elec. spec.</b>	35WGZ944
<b>Layout</b>	35LYE4735
<b>Eff. date</b>	12-06-2024
<b>CD Diagram</b>	CD0005
<b>Poles</b>	04
<b>Leads</b>	9#18
<b>Proprietary</b>	False
<b>Created date</b>	11-23-2021

High Voltage Full Load Amps	0.9 a
Insulation Class	H
Inverter Code	Not Inverter
KVA Code	M
Lifting Lugs	No Lifting Lugs
Locked Bearing Indicator	Locked Bearing
Motor Finish	UNPAINTED
Motor Lead Quantity/Wire Size	9 @ 18 AWG
Motor Lead Termination	Flying Leads
Motor Standards	NEMA
Motor Type	3512M
Mounting Arrangement	F1
Number of Poles	4
Overall Length	11.78 IN
Power Factor	65
Product Family	WD All SD Non-Encapsulated
Pulley End Bearing Type	Sealed Bearing
Pulley Face Code	C-Face
Pulley Shaft Indicator	Standard
Rodent Screen	None
Service Factor	1.15
Shaft Diameter	0.625 IN
Shaft Ground Indicator	No Shaft Grounding
Shaft Rotation	Reversible
Shaft Slinger Indicator	No Slinger
Speed	1770 rpm
Speed Code	Single Speed
Starting Method	Direct on line
Thermal Device - Bearing	None
Thermal Device - Winding	None
Vibration Sensor Indicator	No Vibration Sensor
Winding Thermal 1	None
Winding Thermal 2	None

**Nameplate**

**NP4427ALA01**

<b>CAT #</b>	CFSWDM3538-E	<b>WT</b>	33	<b>LBS</b>	
<b>SPEC</b>	35E4735Z944G1	<b>ENCL</b>	TENV		
<b>SER #</b>		<b>CC</b>		<b>IP</b>	69
<b>HP</b>	.5	<b>MAG CUR</b>	1.34-1.58/.79		
<b>VOLTS</b>	208-230/460	<b>NEMA NOM. EFF</b>	80		
<b>AMPS</b>	1.9-1.8/.9	<b>PF</b>	65		
<b>RATING</b>	40C AMB-CONT				
<b>RPM</b>	1770	<b>MAX RPM</b>	2700		
<b>FRAME</b>	56C	<b>HZ</b>	60	<b>CODE</b>	M
		<b>CLASS</b>	H		
<b>SER.F.</b>	1.15	<b>SF AMP</b>	2.1-1.9/0.95	<b>PH</b>	3
		<b>DES</b>	B		
<b>DE</b>	6205	<b>ODE</b>	6205		
<b>LUBRICATION</b>	POLYREX EM				
<b>ID LOGO</b>	<b>INVERTER TYPE</b>	<b>VPWM</b>	<b>CHP</b>	60	<b>TO</b> 90 1.5:1
<b>ID LOGO</b>	<b>WK2</b> 0.087	<b>CT</b> 15	<b>TO</b> 60	4:1	
<b>ID LOGO</b>	<b>SL HZ</b> 1	<b>VT</b> 3	<b>TO</b> 60	20:1	
<b>YR</b>				<b>QR</b>	

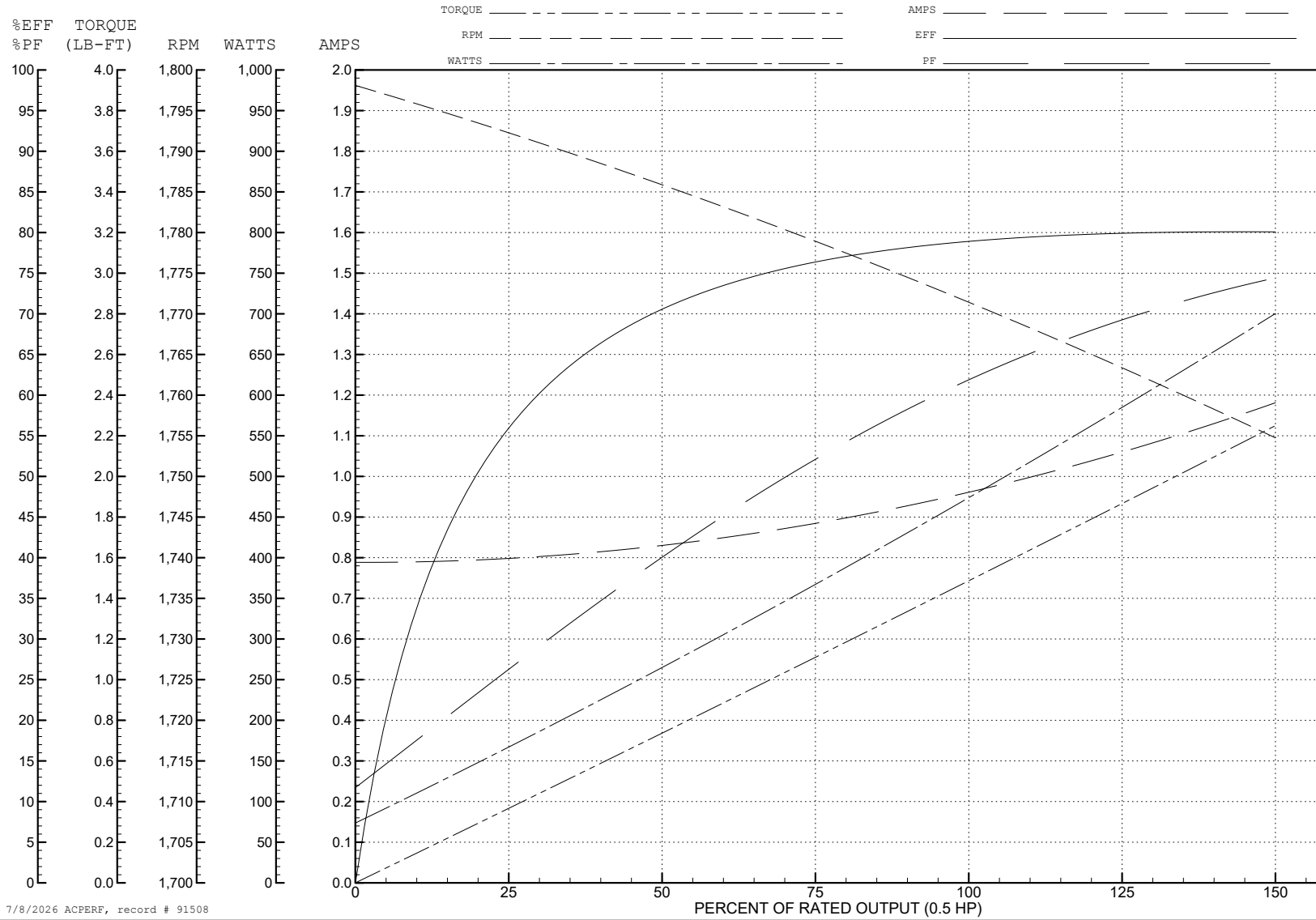
ABB Motors and Mechanical Inc.

WINDING # 35WGZ944

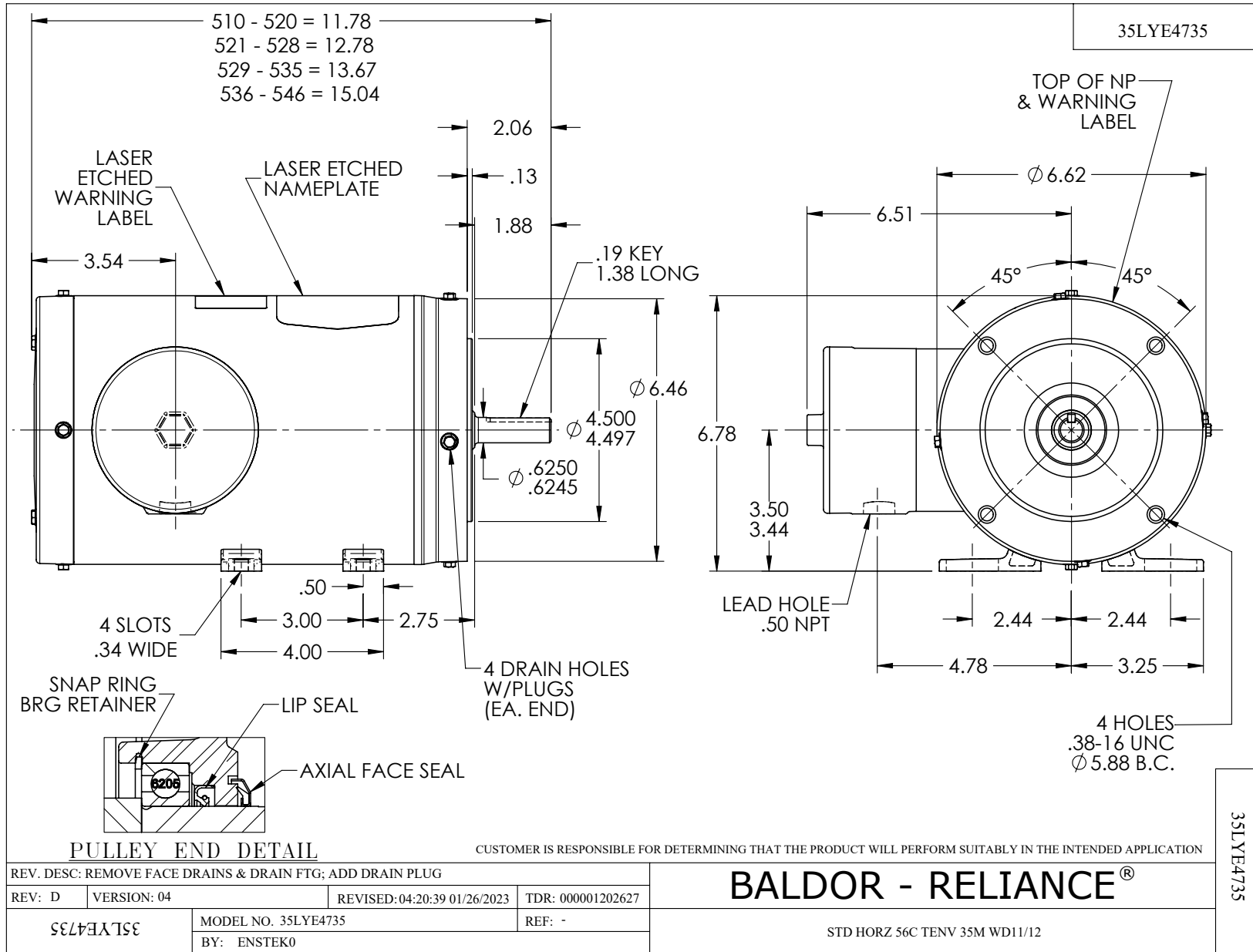
Typical performance - not guaranteed values.

0.5 HP 3 PH 60 HZ 1770 RPM 460 V 3512M

TORQUES (LB-FT): PO=6.28 PU=3.26 LR=4.04 LRA=6.71



7/8/2026 ACPERF, record # 91508



CD0005



LOW VOLTAGE  
(2Y)



LINE

HIGH VOLTAGE  
(1Y)



LINE

**NOTES:**

1. INTERCHANGE ANY TWO LINE LEADS TO REVERSE ROTATION.
2. OPTIONAL THERMOSTATS ARE PROVIDED WHEN SPECIFIED.
3. ACTUAL NUMBER OF INTERNAL PARALLEL CIRCUITS MAY BE A MULTIPLE OF THOSE SHOWN ABOVE.
4. LEAD COLORS ARE OPTIONAL. LEADS MUST ALWAYS BE NUMBERED AS SHOWN.

CD0005

REV. DESC: REVISE TO SHOW OPTIONAL COLORS

REV. LTR: E BY: JLP REVISED: 01/19/99 10:15 TDR: 0171435

900000

FILE: AAA00005140

MDL: -

MTL: -

**BALDOR ELECTRIC Co.**

3PH, DV, 9 LEADS