

ABB BALDOR RELIANCE III

Customer information packet

CFSWDM23932T-E

10HP, 1180RPM, 3PH, 60HZ, 256TC, 3964M, TEFC, F

Class - None

Division - Not Applicable

Specifications

Enclosure	TEFC
Frame	256TC
Frame Material	Stainless Steel
Frequency	60.00 Hz
Haz Area Class and Group	None
Haz Area Division	Not Applicable
Motor Letter Type	Three Phase
Output @ Frequency	10.000 HP @ 60 HZ
Phase	3
Synchronous Speed @ Frequency	1200 RPM @ 60 HZ
Voltage @ Frequency	230.0 V @ 60 HZ 460.0 V @ 60 HZ
Agency Approvals	NEMA PREMIUM CSA UR
Ambient Temperature	40 °C
Auxiliary Box	NO AUXILLARY BOX
Auxiliary Box Lead Termination	None
Base Indicator	Rigid
Bearing Grease Type	Polyrex EM (-20F +300F)
Blower	None
Current @ Voltage	15.100 A @ 460.0 V 30.200 A @ 230.0 V
Design Code	A
Drip Cover	No Drip Cover
Duty Rating	CONT
Efficiency @ 100% Load	91.0 %
Electrically Isolated Bearing	Not Electrically Isolated
Feedback Device	NO FEEDBACK
Front Face Code	Standard
Front Shaft Indicator	None
Heater Indicator	No Heater

Part Detail

Revision	Z
Type	AC
Mech. spec.	39E646
Base	
Status	PRD/A
Elec. spec.	39WGX896
Layout	39LYE646
Eff. date	02-10-2025
CD Diagram	CD0180
Poles	06
Leads	9#12
Proprietary	False
Created date	04-06-2017

High Voltage Full Load Amps	15.1 a
Insulation Class	H
Inverter Code	Inverter Ready
KVA Code	K
Lifting Lugs	Standard Lifting Lugs
Locked Bearing Indicator	Locked Bearing
Motor Lead Exit	Ko Box
Motor Lead Quantity/Wire Size	9 @ 12 AWG
Motor Lead Termination	Flying Leads
Motor Standards	NEMA
Motor Type	3964M
Mounting Arrangement	F1
Number of Poles	6
Overall Length	25.18 IN
Power Factor	68
Product Family	WD All SS Encapsulated
Pulley End Bearing Type	Sealed Bearing
Pulley Face Code	C-Face
Pulley Shaft Indicator	Standard
Rodent Screen	None
RoHS Status	ROHS COMPLIANT
Service Factor	1.15
Shaft Diameter	1.625 IN
Shaft Extension Location	Pulley End
Shaft Ground Indicator	No Shaft Grounding
Shaft Rotation	Reversible
Shaft Slinger Indicator	No Slinger
Speed	1180 rpm
Speed Code	Single Speed
Starting Method	Direct on line
Thermal Device - Bearing	None
Thermal Device - Winding	None
Vibration Sensor Indicator	No Vibration Sensor
Winding Thermal 1	None

Winding Thermal 2

None

Nameplate

NP4427AAA05									
CAT #	CFSWDM23932T-E			WGT		LBS			
SPEC	39E646X896G1			ENCL	TEFC				
SER #		CC	010A	IP	69				
HP	10	MAG CUR	17/8.5						
VOLTS	230/460		NEMA NOM. EFF	91					
AMPS	30.2/15.1		PF	68					
RATING	40C AMB-CONT								
RPM	1180		MAX RPM	1800					
FRAME	256TC	HZ	60	CODE	K	CLASS	H		
SER.F.	1.15	SF AMP		PH	3	DES	A		
DE	6309		ODE	6309					
LUBRICATION	POLYREX EM								
ID LOGO	INV TYPE:	VPWM	CHP	60	TO	90	1.5:1		
ID LOGO	WK2	5.14	CT	30	TO	60	2:1		
ID LOGO	SL HZ	1	VT	6	TO	60	10:1		
YR							QR		

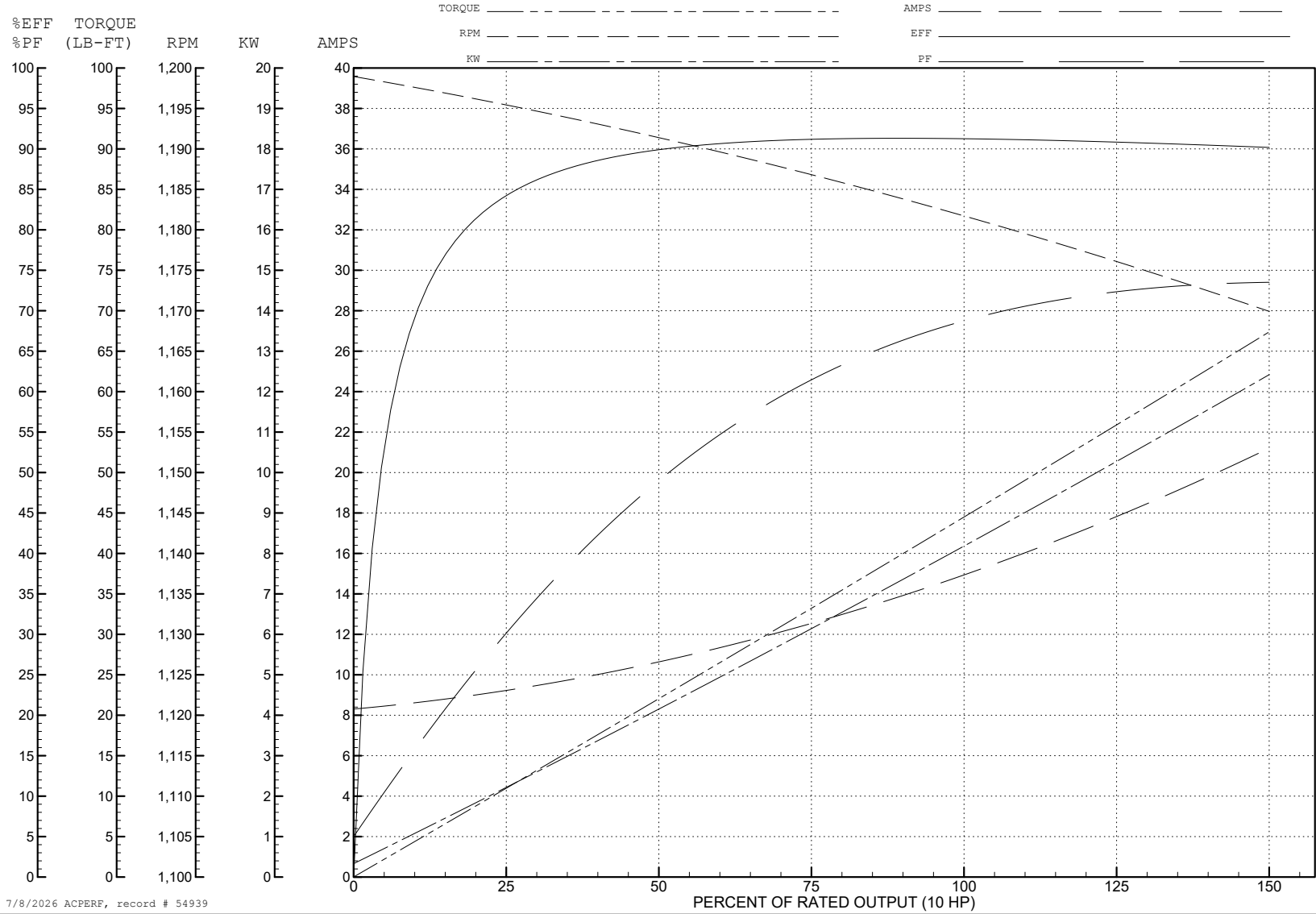
ABB Motors and Mechanical Inc.

WINDING # 39WGx896

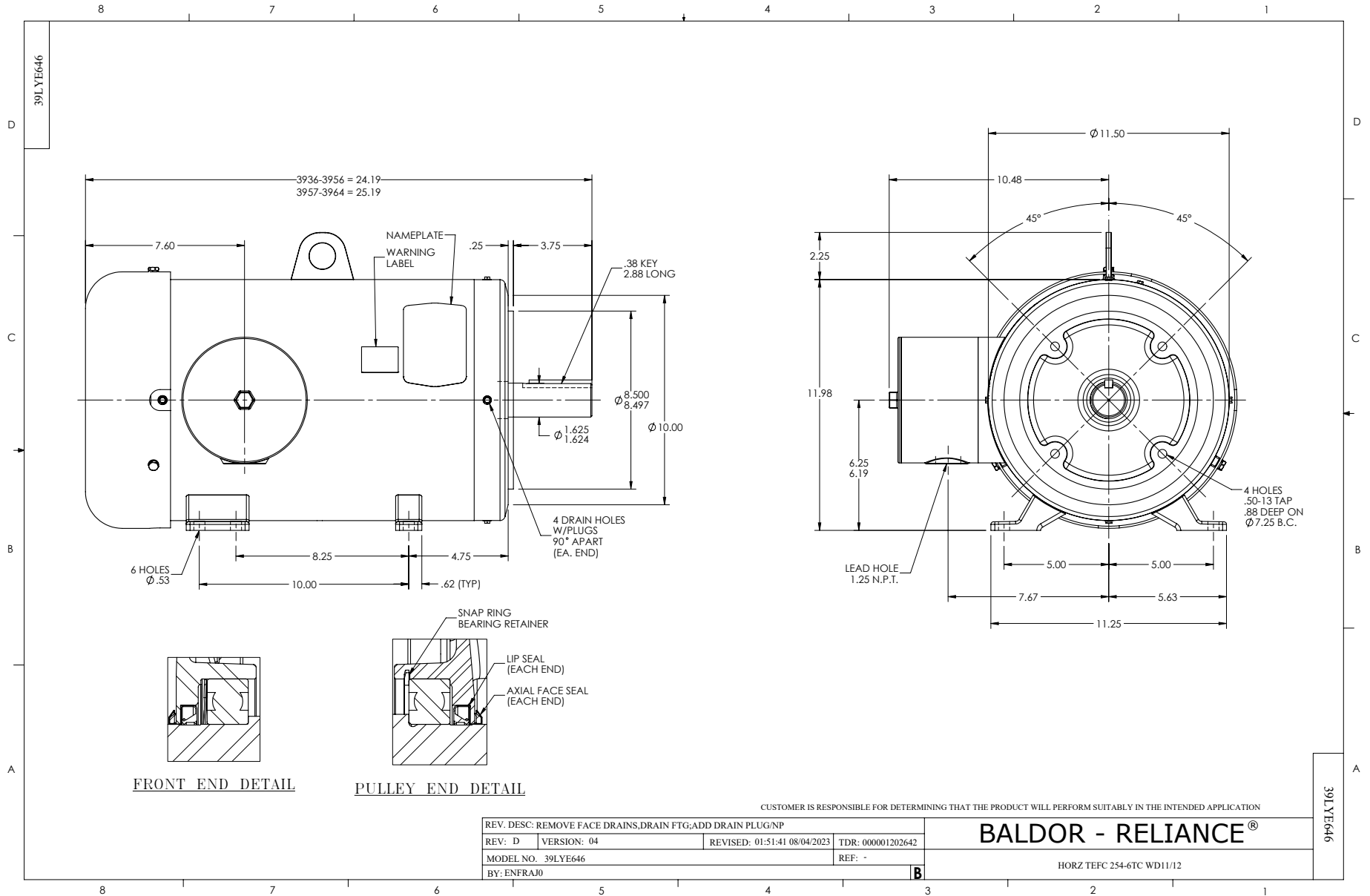
Typical performance - not guaranteed values.

10 HP 3 PH 60 HZ 1180 RPM 460 V 3964M

TORQUES (LB-FT): PO=149 PU=58 LR=81.2 LRA=103



7/8/2026 ACPERF, record # 54939



CD0180



LOW VOLTAGE
(2D)



HIGH VOLTAGE
(1D)



NOTES:

1. INTERCHANGE ANY TWO LINE LEADS TO REVERSE ROTATION.
2. OPTIONAL THERMOSTATS ARE PROVIDED WHEN SPECIFIED.
3. ACTUAL NUMBER OF INTERNAL PARALLEL CIRCUITS MAY BE A MULTIPLE OF THOSE SHOWN ABOVE.
4. LEAD COLORS ARE OPTIONAL. LEADS MUST ALWAYS BE NUMBERED AS SHOWN.

CD0180

REV. DESC: ADD CLASS CONN00000007		
REV. LTR: D	VERSION: 01	TDR: 000001099922
FILE: \AAA\00005\148	REVISED: 10: 25: 29 02/19/2019	BY: ENBRIRO
MTL: -	© □	

BALDOR - RELIANCE®

3PH, DV, 9 LEADS, DELTA CONNECTION

SH 1 of 1