



Customer information packet

CFM3156A

1 AIR-OVERHP, 1170RPM, 3PH, 60HZ, 56YZ, 3522M

Class - None

Division - Not Applicable

Specifications

Enclosure	OPEN
Frame	56YZ
Frame Material	Steel
Frequency	60.00 Hz
Haz Area Class and Group	None
Haz Area Division	Not Applicable
Motor Letter Type	Three Phase
Output @ Frequency	1.000 HP @ 60 HZ
Phase	3
Synchronous Speed @ Frequency	1200 RPM @ 60 HZ
Voltage @ Frequency	208.0 V @ 60 HZ 230.0 V @ 60 HZ 460.0 V @ 60 HZ
Agency Approvals	C UR US
Ambient Temperature	40 °C
Auxiliary Box	NO AUXILLARY BOX
Auxiliary Box Lead Termination	None
Base Indicator	No Mounting
Bearing Grease Type	Polyrex EM (-20F +300F)
Blower	None
Current @ Voltage	1.700 A @ 460.0 V 3.400 A @ 230.0 V 3.500 A @ 208.0 V
Design Code	B
Drip Cover	No Drip Cover
Duty Rating	CONT
Efficiency @ 100% Load	78.5 %
Electrically Isolated Bearing	Not Electrically Isolated
Feedback Device	NO FEEDBACK
Front Shaft Indicator	None
Heater Indicator	No Heater
High Voltage Full Load Amps	1.7 a

Part detail

Revision	D
Type	AC
Mech. spec.	35K306
Base	
Status	PRD/A
Elec. spec.	35WGG339
Layout	35LYK306
Eff. date	07-25-2024
CD Diagram	CD0007
Poles	06
Leads	12#18
Proprietary	False
Created date	12-19-2022

Insulation Class	F
Inverter Code	Not Inverter
IP Rating	NONE
KVA Code	H
Lifting Lugs	No Lifting Lugs
Locked Bearing Indicator	No Locked Bearing
Motor Lead Quantity/Wire Size	12 @ 18 AWG
Motor Lead Termination	None
Motor Standards	NEMA
Motor Type	3522M
Mounting Arrangement	F1
Number of Poles	6
Overall Length	16.30 IN
Power Factor	69
Product Family	General Purpose
Pulley End Bearing Type	Sealed Bearing
Pulley Face Code	Other
Pulley Shaft Indicator	Key And Flat
Rodent Screen	None
Service Factor	1.15
Shaft Diameter	0.625 IN
Shaft Ground Indicator	No Shaft Grounding
Shaft Rotation	Reversible
Shaft Slinger Indicator	No Slinger
Speed	1170 rpm
Speed Code	Single Speed
Starting Method	Direct on line
Thermal Device - Bearing	None
Thermal Device - Winding	Do Not Use Eve-Not Valid
Vibration Sensor Indicator	No Vibration Sensor
Winding Thermal 1	Automatic Thermal Overload
Winding Thermal 1 Location	ES
Winding Thermal 2	None

Nameplate

NP1257L									
CAT.NO.	CFM3156A								
SPEC.	35K306G339G1								
HP	1 AIR-OVER								
VOLTS	208-230/460								
AMP	3.5-3.4/1.7								
RPM	1170								
FRAME	56YZ		HZ	60		PH	3		
SER.F.	1.15	CODE	H	DES	B	CL	F		
NEMA-NOM-EFF	78.5	PF	69						
RATING	40C AMB-CONT								
CC									
DE	6203	ODE	6205						
ENCL	OPEN	SN							
	SFA 3.9-3.8/1.9								

AC Induction Motor Performance Data

Record # 87783

Typical performance - not guaranteed values

Winding: 35WGG339-R001		Type: 3522M		Enclosure: OPAO	
Nameplate Data			460 V, 60 Hz: High Voltage Connection		
Rated Output (HP)	1 AIR-OVER		Full Load Torque	4.48 LB-FT	
Volts	208-230/460		Start Configuration	direct on line	
Full Load Amps	3.5-3.4/1.7		Breakdown Torque	11.4 LB-FT	
R.P.M.	1170		Pull-up Torque	8.02 LB-FT	
Hz	60	Phase	3	Locked-rotor Torque	8.81 LB-FT
NEMA Design Code	B KVA Code		H	Starting Current	8.29 A
Service Factor (S.F.)			1.15	No-load Current	1.14 A
NEMA Nom. Eff.	78.5	Power Factor	69	Line-line Res. @ 25°C	25.9 Ω
Rating - Duty	40C AMB-CONT			Temp. Rise @ Rated Load	
S.F. Amps	3.9-3.8/1.9			Temp. Rise @ S.F. Load	
				Locked-rotor Power Factor	55.7
				Rotor inertia	0.16 lb-ft ²

Load Characteristics 460 V, 60 Hz, 1 HP

% of Rated Load	25	50	75	100	125	150	S.F.
Power Factor	31	48	60	69	75	78	73
Efficiency	63.9	75.8	79.1	79.6	77.6	75.5	78.4
Speed	1194	1188	1180	1172	1160	1145	1165
Line amperes	1.19	1.3	1.47	1.71	2.02	2.37	1.9

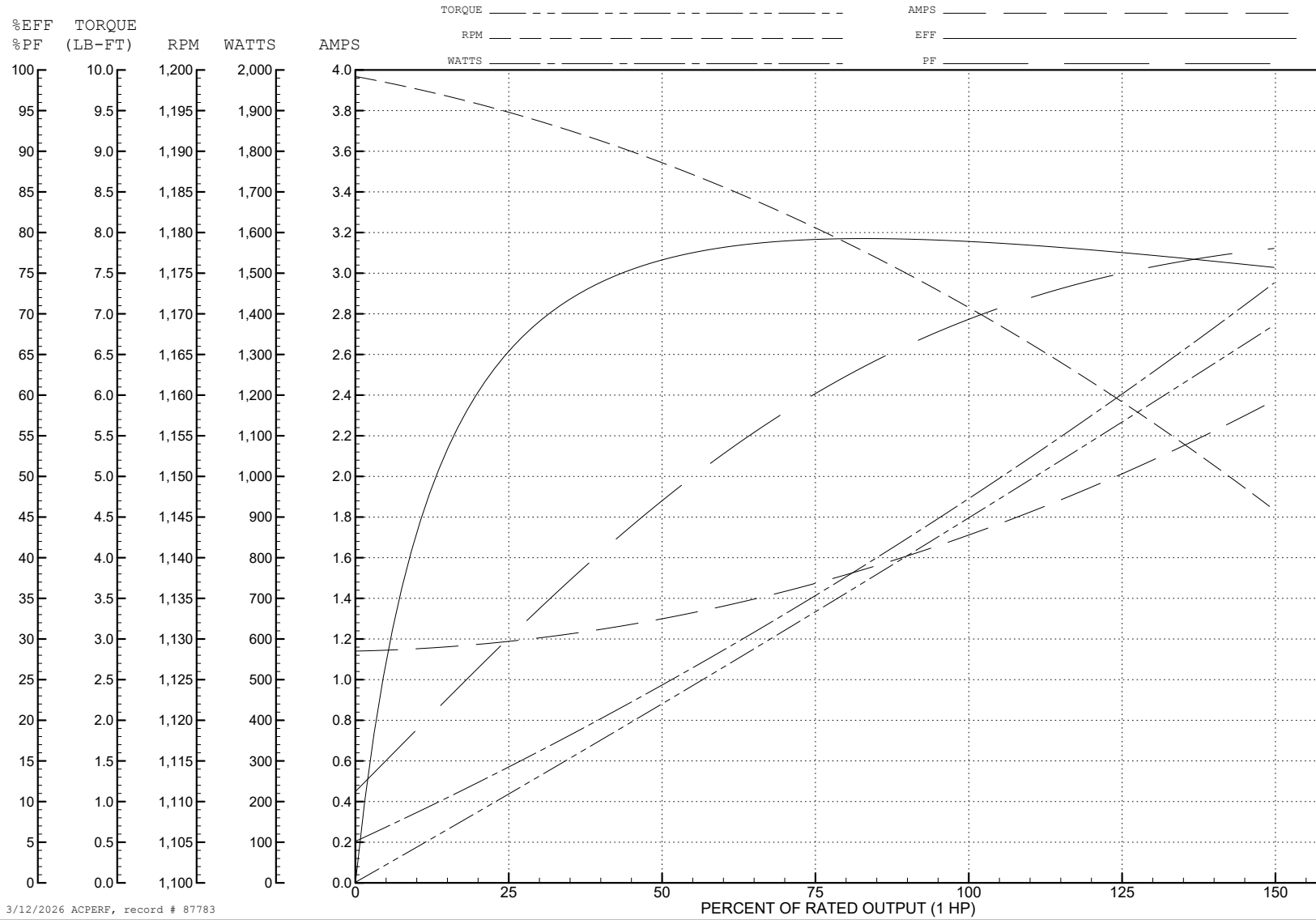
ABB Motors and Mechanical Inc.

WINDING # 35WGG339

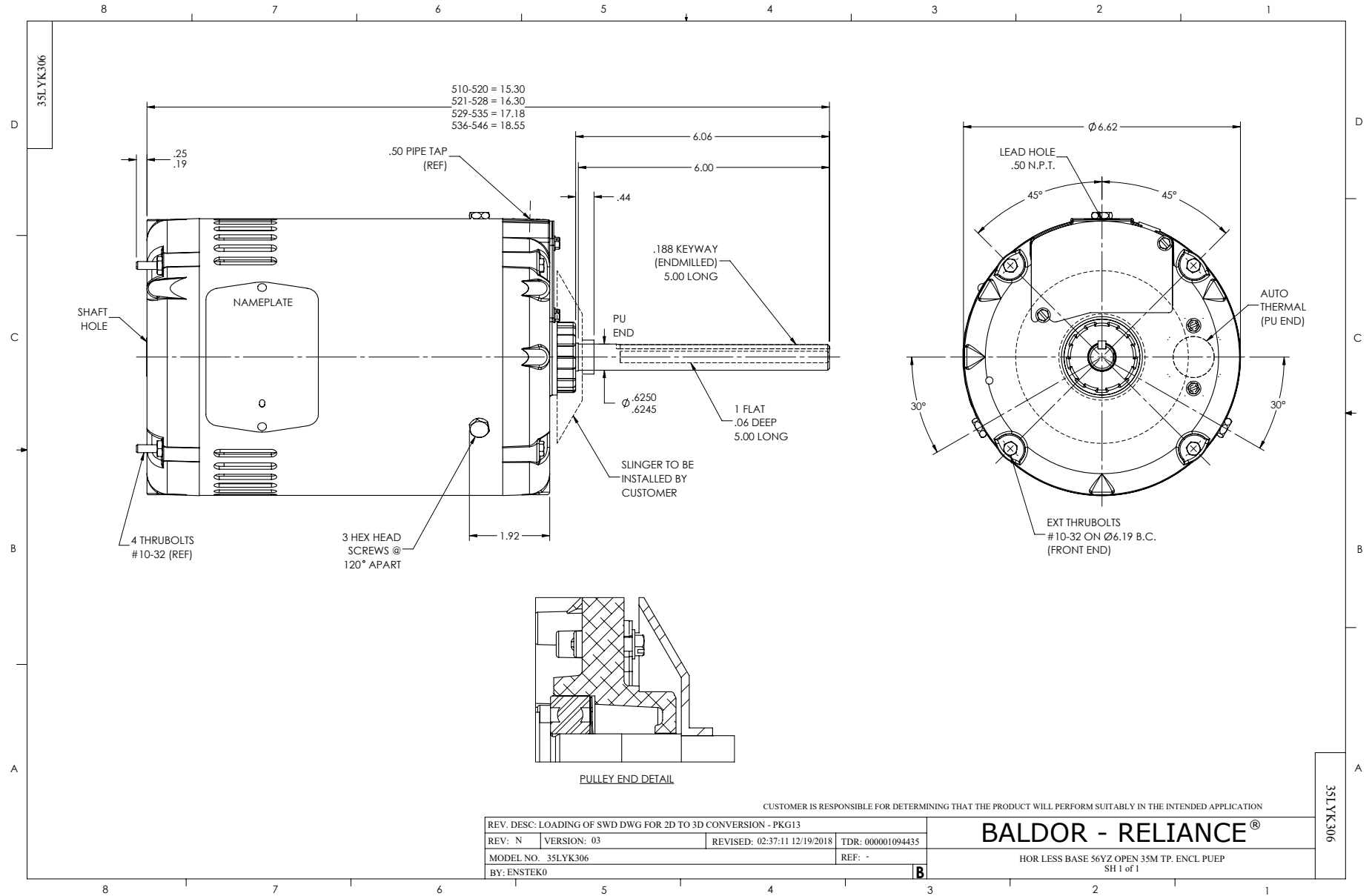
Typical performance - not guaranteed values.

1 HP 3 PH 60 HZ 1170 RPM 460 V 3522M

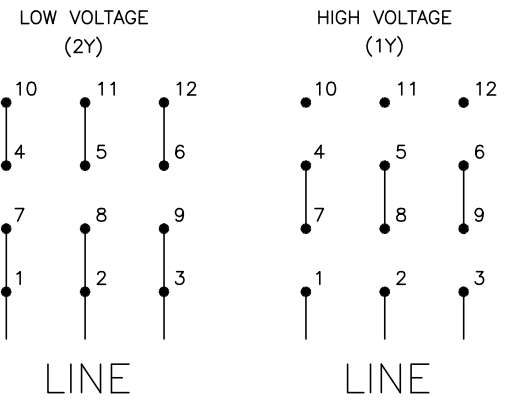
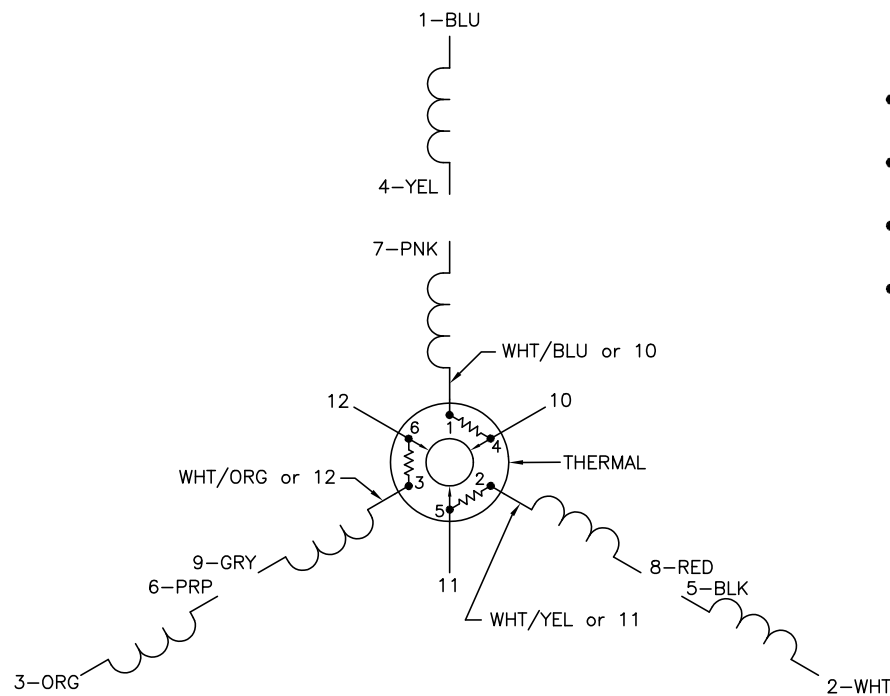
TORQUES (LB-FT): PO=11.4 PU=8.02 LR=8.81 LRA=8.29



3/12/2026 ACPERF, record # 87783



CD0007



- NOTES:
1. INTERCHANGE ANY TWO LINE LEADS TO REVERSE ROTATION.
 2. ACTUAL NUMBER OF INTERNAL PARALLEL CIRCUITS MAY VARY.
 3. LEAD COLORS ARE OPTIONAL. LEADS MUST ALWAYS BE NUMBERED AS SHOWN.

CD0007

REV. DESC: ADDED "CK" PLANT CODE			
REV. LTR: E	BY: EAH	REVISED: 05/06/99 17:1	TDR: 0181040
L00000		FILE: AAA00008370	MDL: -
		MTL: -	

BALDOR ELECTRIC Co.

3PH, DV, THERMAL, 12 LEADS