

**BALDOR • RELIANCE**

---

# Customer information packet

## CFM3146A

.75HP, 1160RPM, 3PH, 60HZ, 56YZ, 3520M, OPEN, F

Class - None

Division - Not Applicable

## Specifications

|                                |   |
|--------------------------------|---|
| Enclosure                      | OPEN  |
| Frame                          | 56YZ  |
| Frame Material                 | Steel   |
| Frequency                      | 60.00 Hz  |
| Haz Area Class and Group       | None  |
| Haz Area Division              | Not Applicable  |
| Motor Letter Type              | Three Phase   |
| Output @ Frequency             | .750 HP @ 60 HZ   |
| Phase                          | 3   |
| Synchronous Speed @ Frequency  | 1200 RPM @ 60 HZ  |
| Voltage @ Frequency            | 208.0 V @ 60 HZ<br>230.0 V @ 60 HZ<br>460.0 V @ 60 HZ       |
| Agency Approvals               | C UR US   |
| Ambient Temperature            | 60 °C   |
| Auxillary Box                  | No Auxillary Box  |
| Auxillary Box Lead Termination | None  |
| Base Indicator                 | No Mounting   |
| Bearing Grease Type            | Polyrex EM (-20F +300F)                                     |
| Blower                         | None  |
| Current @ Voltage              | 1.350 A @ 460.0 V<br>2.600 A @ 208.0 V<br>2.700 A @ 230.0 V |
| Design Code                    | B   |
| Drip Cover                     | No Drip Cover   |
| Duty Rating                    | CONT  |
| Efficiency @ 100% Load         | 77.0 %  |
| Electrically Isolated Bearing  | Not Electrically Isolated                                   |
| Feedback Device                | NO FEEDBACK   |
| Front Shaft Indicator          | None  |
| Heater Indicator               | No Heater   |
| High Voltage Full Load Amps    | 1.4 a   |

## Part detail

|              |            |
|--------------|------------|
| Revision     | E          |
| Type         | AC         |
| Mech. spec.  | 35K306     |
| Base         |            |
| Status       | PRD/A      |
| Elec. spec.  | 35WGG342   |
| Layout       | 35LYK306   |
| Eff. date    | 11-12-2024 |
| CD Diagram   | CD0007     |
| Poles        | 06         |
| Leads        | 12#18      |
| Proprietary  | False      |
| Created date | 12-19-2022 |

|                               |                            |
|-------------------------------|----------------------------|
| Insulation Class              | F                          |
| Inverter Code                 | Not Inverter               |
| IP Rating                     | NONE                       |
| KVA Code                      | J                          |
| Lifting Lugs                  | No Lifting Lugs            |
| Locked Bearing Indicator      | No Locked Bearing          |
| Motor Lead Quantity/Wire Size | 12 @ 18 AWG                |
| Motor Lead Termination        | None                       |
| Motor Standards               | NEMA                       |
| Motor Type                    | 3520M                      |
| Mounting Arrangement          | F1                         |
| Number of Poles               | 6                          |
| Overall Length                | 15.30 IN                   |
| Power Factor                  | 67                         |
| Product Family                | General Purpose            |
| Pulley End Bearing Type       | Sealed Bearing             |
| Pulley Face Code              | Other                      |
| Pulley Shaft Indicator        | Key And Flat               |
| Rodent Screen                 | None                       |
| Service Factor                | 1.15                       |
| Shaft Diameter                | 0.625 IN                   |
| Shaft Ground Indicator        | No Shaft Grounding         |
| Shaft Rotation                | Reversible                 |
| Shaft Slinger Indicator       | No Slinger                 |
| Speed                         | 1160 rpm                   |
| Speed Code                    | Single Speed               |
| Starting Method               | Direct on line             |
| Thermal Device - Bearing      | None                       |
| Thermal Device - Winding      | Do Not Use Eve-Not Valid   |
| Vibration Sensor Indicator    | No Vibration Sensor        |
| Winding Thermal 1             | Automatic Thermal Overload |
| Winding Thermal 1 Location    | SB                         |
| Winding Thermal 2             | None                       |

**Nameplate**

| <b>NP1257L</b>      |                   |             |           |            |   |           |   |  |  |
|---------------------|-------------------|-------------|-----------|------------|---|-----------|---|--|--|
| <b>CAT.NO.</b>      | CFM3146A          |             |           |            |   |           |   |  |  |
| <b>SPEC.</b>        | 35K306G342        |             |           |            |   |           |   |  |  |
| <b>HP</b>           | .75               |             |           |            |   |           |   |  |  |
| <b>VOLTS</b>        | 208-230/460       |             |           |            |   |           |   |  |  |
| <b>AMP</b>          | 2.6-2.7/1.35      |             |           |            |   |           |   |  |  |
| <b>RPM</b>          | 1160              |             |           |            |   |           |   |  |  |
| <b>FRAME</b>        | 56YZ              |             | <b>HZ</b> | 60         |   | <b>PH</b> | 3 |  |  |
| <b>SER.F.</b>       | 1.15              | <b>CODE</b> | J         | <b>DES</b> | B | <b>CL</b> | F |  |  |
| <b>NEMA-NOM-EFF</b> | 77                | <b>PF</b>   | 67        |            |   |           |   |  |  |
| <b>RATING</b>       | 60C AMB-CONT      |             |           |            |   |           |   |  |  |
| <b>CC</b>           |                   |             |           |            |   |           |   |  |  |
| <b>DE</b>           | 6203              | <b>ODE</b>  | 6205      |            |   |           |   |  |  |
| <b>ENCL</b>         | OPEN              | <b>SN</b>   |           |            |   |           |   |  |  |
|                     | SFA 2.92-2.9/1.45 |             |           |            |   |           |   |  |  |

**AC Induction Motor Performance Data**

Record # 87792

Typical performance - not guaranteed values

| Winding: 35WGG342-R001 |                 | Type: 3520M               | Enclosure: OPEN                                  |  |
|------------------------|-----------------|---------------------------|--|--|
| <b>Nameplate Data</b>  |                 |                           | <b>460 V, 60 Hz:<br/>High Voltage Connection</b> |  |
| Rated Output (HP)      | .75             | Full Load Torque          | 3.35 LB-FT                                       |  |
| Volts                  | 208-230/460     | Start Configuration       | direct on line                                   |  |
| Full Load Amps         | 2.6-2.7/1.35    | Breakdown Torque          | 10.18 LB-FT                                      |  |
| R.P.M.                 | 1140            | Pull-up Torque            | 7 LB-FT  |  |
| Hz                     | 60 Phase        | Locked-rotor Torque       | 7.28 LB-FT                                       |  |
| NEMA Design Code       | B KVA Code      | Starting Current          | 7.43 A   |  |
| Service Factor (S.F.)  | 1.15            | No-load Current           | 0.955 A  |  |
| NEMA Nom. Eff.         | 77 Power Factor | Line-line Res. @ 25°C     | 28.1 Ω   |  |
| Rating - Duty          | 60C AMB-CONT    | Temp. Rise @ Rated Load   | 27°C   |  |
| S.F. Amps              | 2.92-2.9/1.45   | Temp. Rise @ S.F. Load    | 31°C   |  |
|                        |                 | Locked-rotor Power Factor | 61.2   |  |
|                        |                 | Rotor inertia             | 0.145 lb-ft <sup>2</sup>                         |  |

**Load Characteristics 460 V, 60 Hz, 0.75 HP**

| % of Rated Load | 25   | 50   | 75   | 100  | 125  | 150  | S.F. |
|-----------------|------|------|------|------|------|------|------|
| Power Factor    | 31   | 47   | 60   | 66   | 72   | 75   | 70   |
| Efficiency      | 57.4 | 71.1 | 76.4 | 77.7 | 77.4 | 77   | 77.5 |
| Speed           | 1188 | 1179 | 1169 | 1158 | 1147 | 1133 | 1151 |
| Line amperes    | 1.01 | 1.06 | 1.15 | 1.34 | 1.52 | 1.75 | 1.45 |

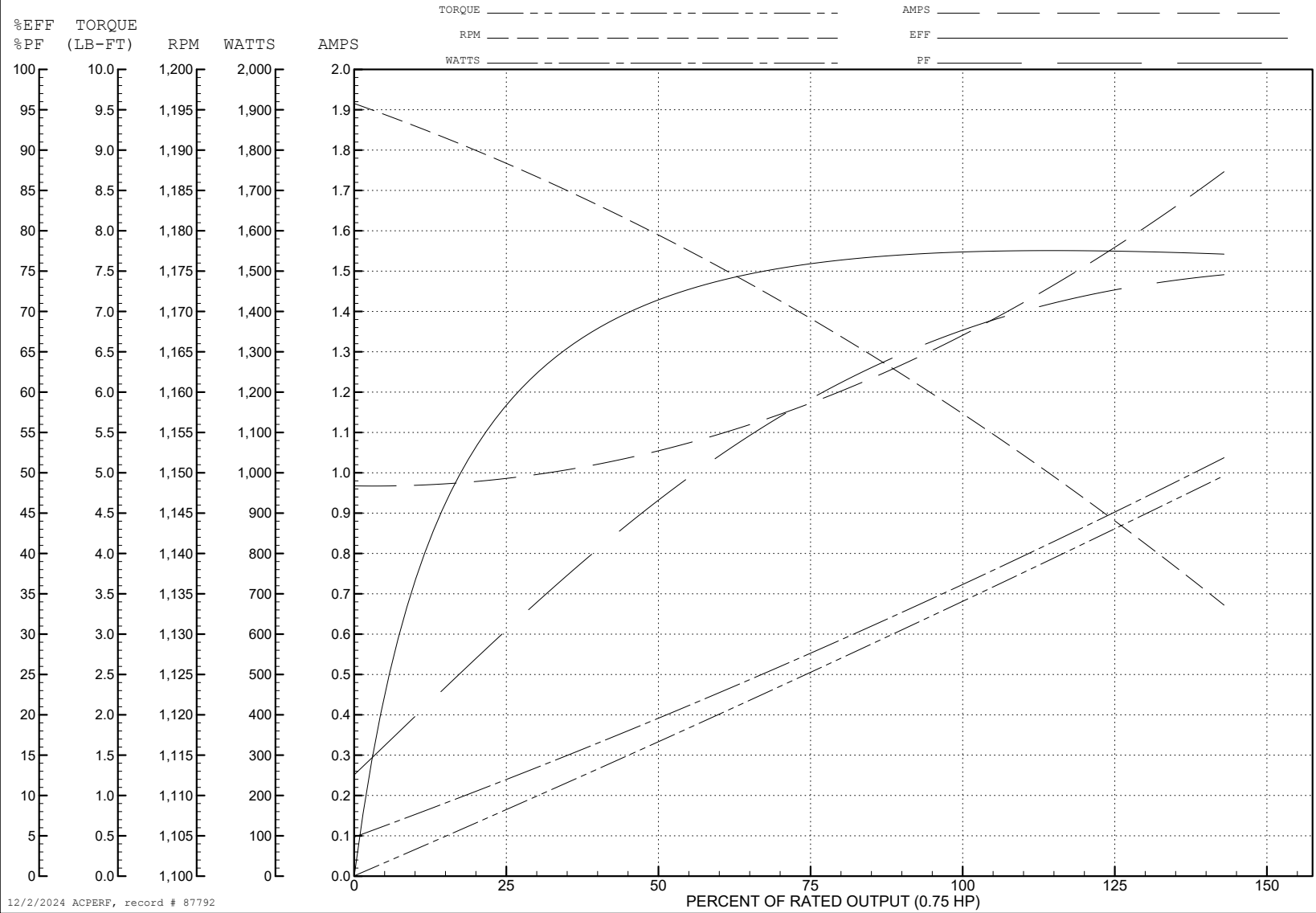
ABB Motors and Mechanical Inc.

WINDING # 35WGG342

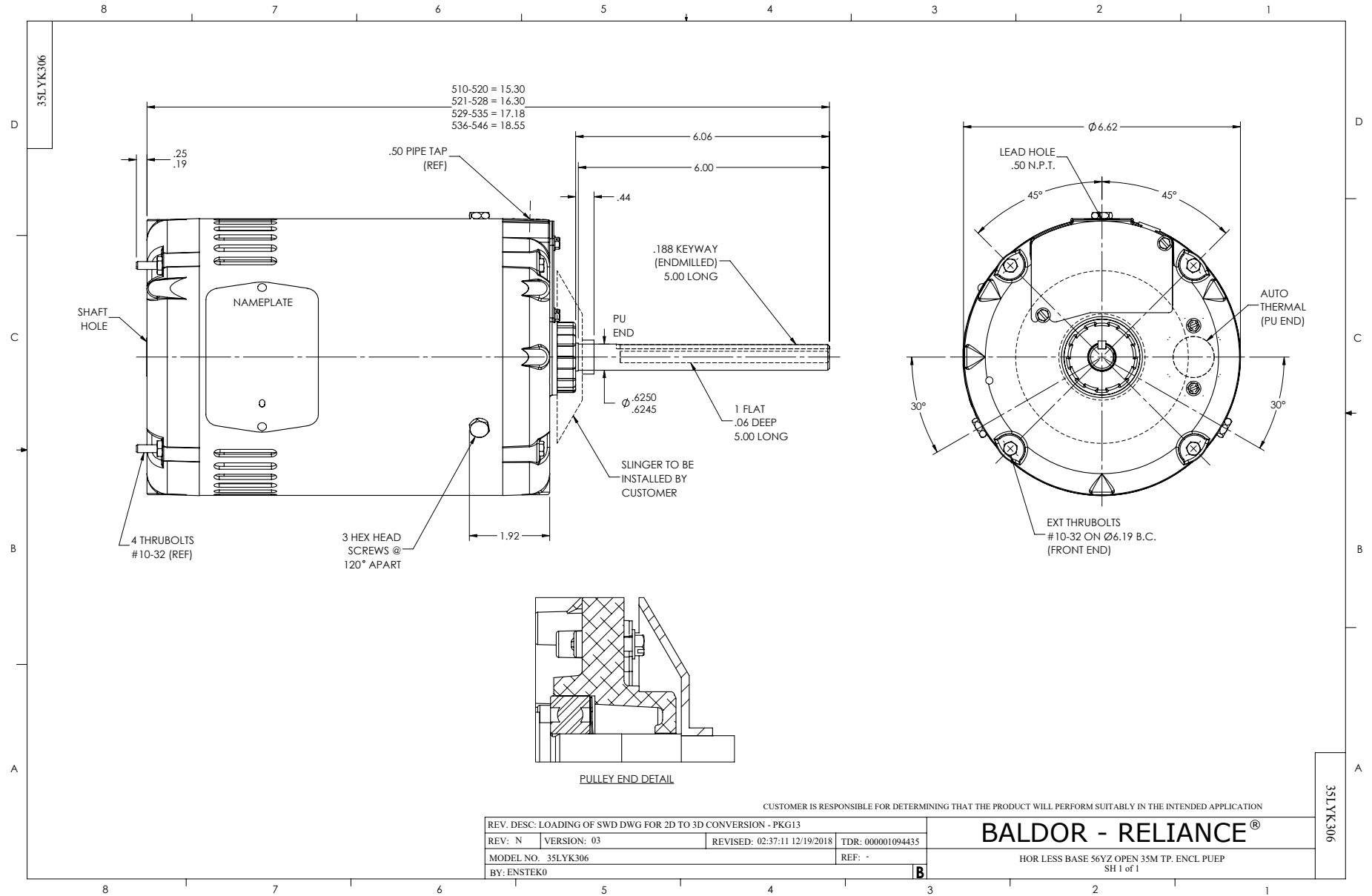
0.75 HP 3 PH 60 HZ 1140 RPM 460 V 3520M

Typical performance - not guaranteed values.

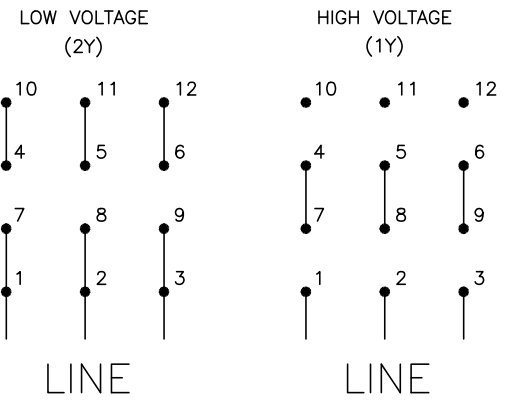
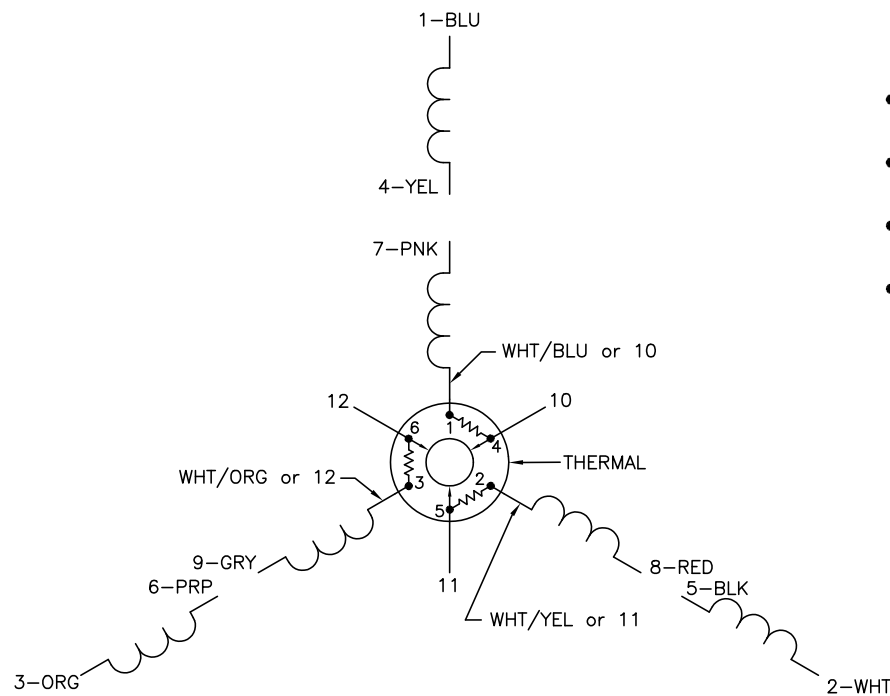
TORQUES (LB-FT): PO=10.18 PU=7 LR=7.28 LRA=7.43



12/2/2024 ACPERF, record # 87792



CD0007



- NOTES:
1. INTERCHANGE ANY TWO LINE LEADS TO REVERSE ROTATION.
  2. ACTUAL NUMBER OF INTERNAL PARALLEL CIRCUITS MAY VARY.
  3. LEAD COLORS ARE OPTIONAL. LEADS MUST ALWAYS BE NUMBERED AS SHOWN.

CD0007

|                                  |         |                        |              |
|----------------------------------|---------|------------------------|--------------|
| REV. DESC: ADDED "CK" PLANT CODE |         |                        |              |
| REV. LTR: E                      | BY: EAH | REVISED: 05/06/99 17:1 | TDR: 0181040 |
| L00000                           |         | FILE: AAA00008370      | MDL: -       |
|                                  |         | MTL: -                 |              |

**BALDOR ELECTRIC Co.**

3PH, DV, THERMAL, 12 LEADS