



Customer information packet

CFM3136A

.5HP, 1140RPM, 3PH, 60HZ, 56YZ, 3516M, OPEN, F1

Class - None

Division - Not Applicable

Specifications

Enclosure	OPEN
Frame	56YZ
Frame Material	Steel
Frequency	60.00 Hz
Haz Area Class and Group	None
Haz Area Division	Not Applicable
Motor Letter Type	Three Phase
Output @ Frequency	.500 HP @ 60 HZ
Phase	3
Synchronous Speed @ Frequency	1200 RPM @ 60 HZ
Voltage @ Frequency	460.0 V @ 60 HZ 230.0 V @ 60 HZ 208.0 V @ 60 HZ
Agency Approvals	CSA UR
Ambient Temperature	60 °C
Auxillary Box	No Auxillary Box
Auxillary Box Lead Termination	None
Base Indicator	No Mounting
Bearing Grease Type	Polyrex EM (-20F +300F)
Blower	None
Current @ Voltage	2.500 A @ 208.0 V 2.400 A @ 230.0 V 1.200 A @ 460.0 V
Design Code	B
Drip Cover	No Drip Cover
Duty Rating	CONT
Efficiency @ 100% Load	70.0 %
Electrically Isolated Bearing	Not Electrically Isolated
Feedback Device	NO FEEDBACK
Front Face Code	Standard
Front Shaft Indicator	None

Part detail

Revision	Y
Type	AC
Mech. spec.	35K306
Base	
Status	PRD/A
Elec. spec.	35WG6771
Layout	35LYK306
Eff. date	05-14-2024
CD Diagram	CD0007
Poles	06
Leads	12#18
Proprietary	False
Created date	01-01-0001

Heater Indicator	No Heater
High Voltage Full Load Amps	1.2 a
Insulation Class	F
Inverter Code	Not Inverter
KVA Code	L
Lifting Lugs	No Lifting Lugs
Locked Bearing Indicator	No Locked Bearing
Motor Lead Exit	Terminal Panel
Motor Lead Quantity/Wire Size	12 @ 18 AWG
Motor Lead Termination	None
Motor Standards	NEMA
Motor Type	3516M
Mounting Arrangement	F1
Number of Poles	6
Overall Length	15.30 IN
Power Factor	55
Product Family	General Purpose
Pulley End Bearing Type	Sealed Bearing
Pulley Face Code	Resilient Mount
Pulley Shaft Indicator	Key And Flat
Rodent Screen	None
Service Factor	1.15
Shaft Diameter	0.625 IN
Shaft Extension Location	Pulley End
Shaft Ground Indicator	No Shaft Grounding
Shaft Rotation	Reversible
Shaft Slinger Indicator	No Slinger
Speed	1140 rpm
Speed Code	Single Speed
Starting Method	Direct on line
Thermal Device - Bearing	None
Thermal Device - Winding	Do Not Use Eve-Not Valid
Vibration Sensor Indicator	No Vibration Sensor
Winding Thermal 1	Automatic Thermal Overload

Winding Thermal 1 Location

SB

Winding Thermal 2

None

Nameplate

NP1257L									
CAT.NO.	CFM3136A								
SPEC.	35K306-6771G1								
HP	.5								
VOLTS	208-230/460								
AMP	2.5-2.4/1.2								
RPM	1140								
FRAME	56YZ		HZ	60		PH	3		
SER.F.	1.15	CODE	L	DES	B	CL	F		
NEMA-NOM-EFF	70	PF	55						
RATING	60C AMB-CONT								
CC									
DE	6203	ODE	6205						
ENCL	OPEN	SN							

AC Induction Motor Performance Data

Record # 61267

Typical performance - not guaranteed values

Winding: 35WG6771-R005		Type: 3516M	Enclosure: OPEN	
Nameplate Data			460 V, 60 Hz: High Voltage Connection	
Rated Output (HP)	.5	Full Load Torque	2.33 LB-FT	
Volts	208-230/460	Start Configuration	direct on line	
Full Load Amps	2.5-2.4/1.2	Breakdown Torque	9.25 LB-FT	
R.P.M.	1140	Pull-up Torque	6.59 LB-FT	
Hz	60 Phase	Locked-rotor Torque	7.01 LB-FT	
NEMA Design Code	B KVA Code	Starting Current	6.58 A	
Service Factor (S.F.)	1.15	No-load Current	1.11 A	
NEMA Nom. Eff.	70 Power Factor	Line-line Res. @ 25°C	35.4 Ω	
Rating - Duty	60C AMB-CONT	Temp. Rise @ Rated Load		
		Locked-rotor Power Factor	71	
		Rotor inertia	0.0949 LB-FT ²	

Load Characteristics 460 V, 60 Hz, 0.5 HP

% of Rated Load	25	50	75	100	125	150	S.F.
Power Factor	25	36	46	55	62	67	59
Efficiency	43.4	59.3	66.6	70.4	71.9	72.1	71.3
Speed	1191	1183	1175	1167	1158	1148	1162
Line amperes	1.11	1.14	1.18	1.26	1.34	1.44	1.31

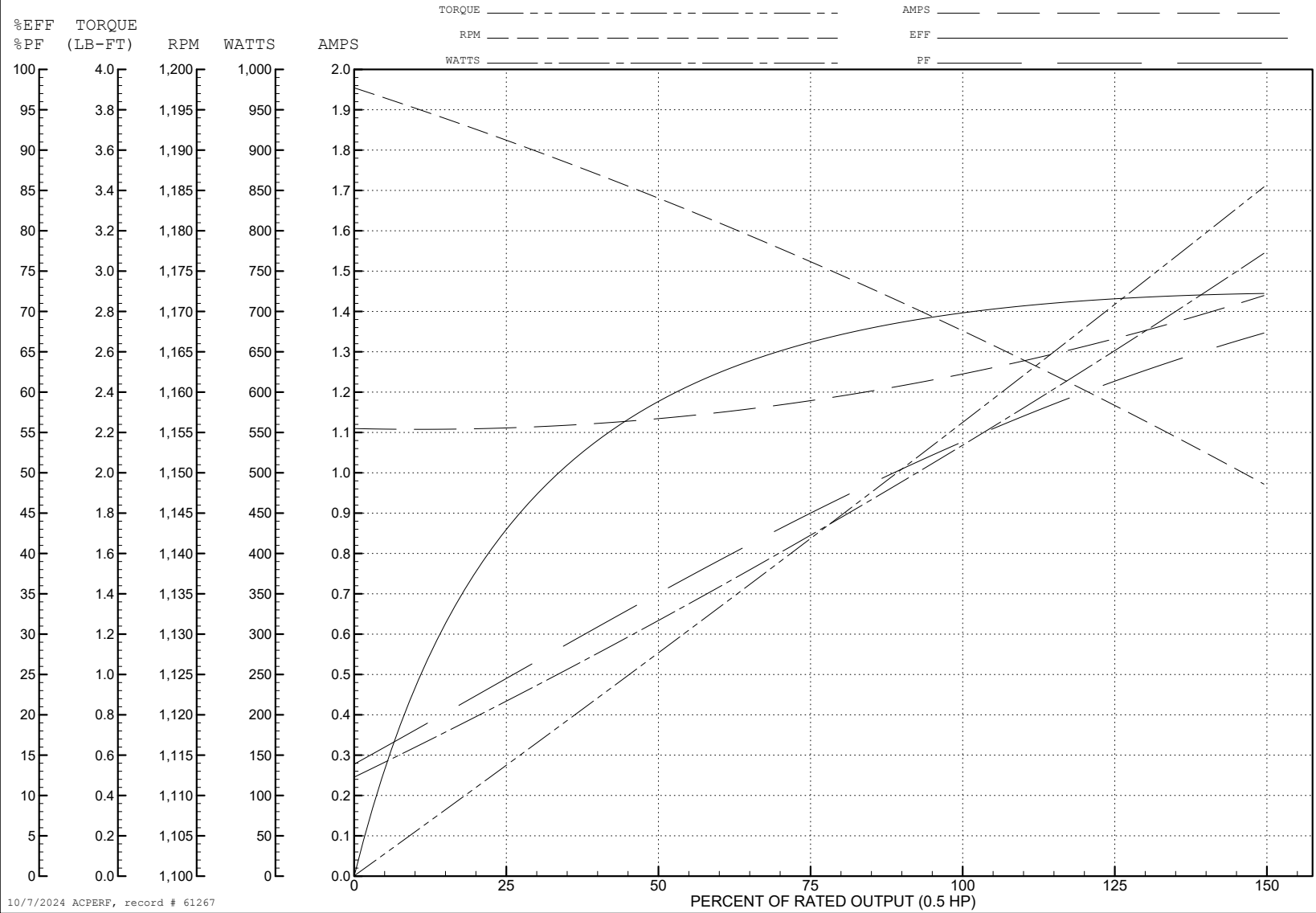
ABB Motors and Mechanical Inc.

WINDING # 35WG6771

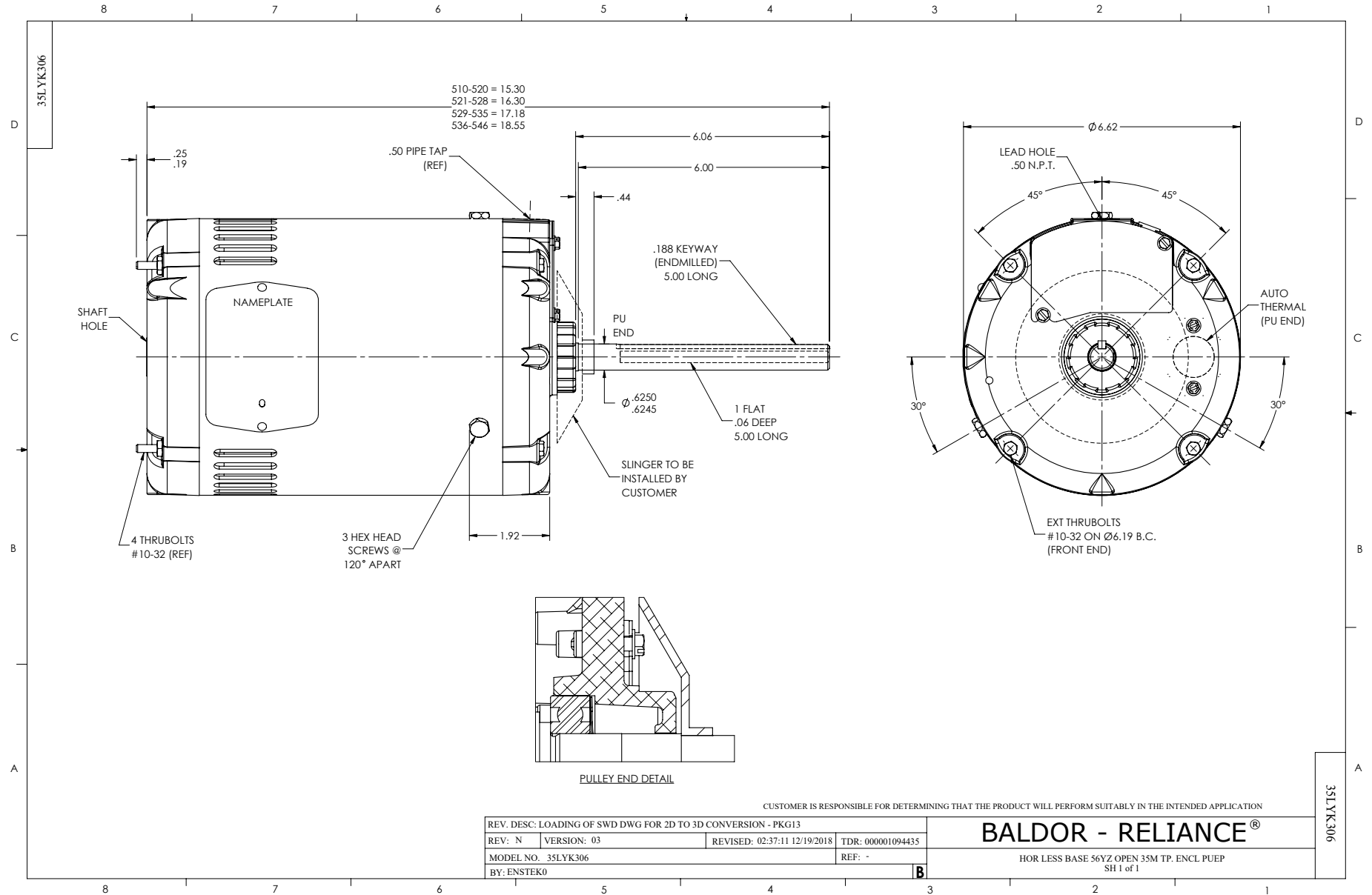
0.5 HP 3 PH 60 HZ 1140 RPM 460 V 3516M

Typical performance - not guaranteed values.

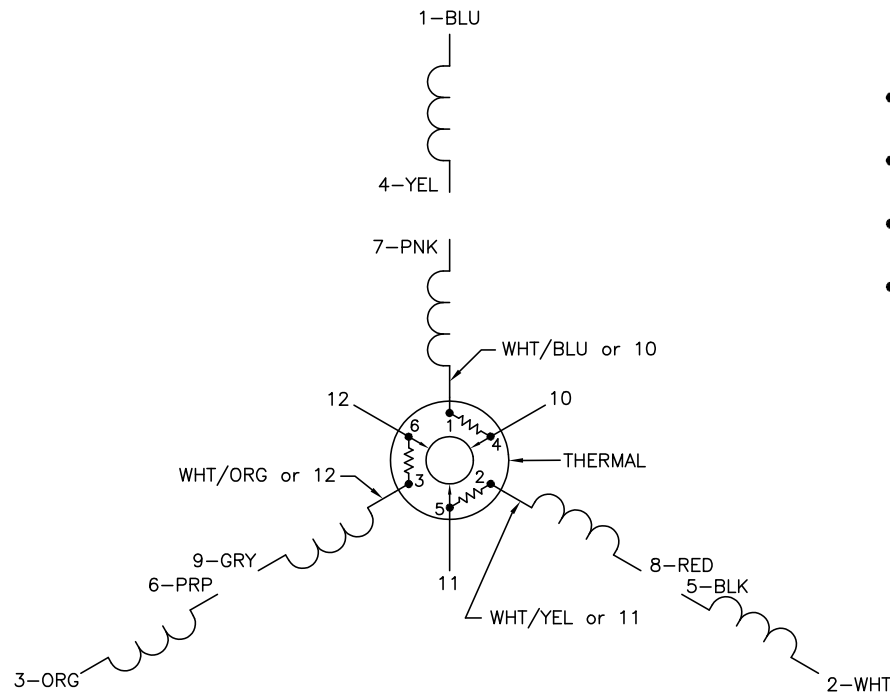
TORQUES (LB-FT): PO=9.25 PU=6.59 LR=7.01 LRA=6.58



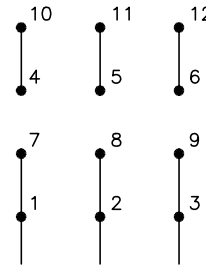
10/7/2024 ACPERF, record # 61267



CD0007

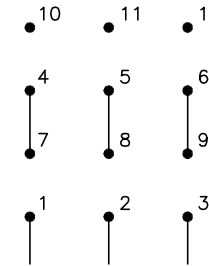


LOW VOLTAGE
(2Y)



LINE

HIGH VOLTAGE
(1Y)



LINE

NOTES:

1. INTERCHANGE ANY TWO LINE LEADS TO REVERSE ROTATION.
2. ACTUAL NUMBER OF INTERNAL PARALLEL CIRCUITS MAY VARY.
3. LEAD COLORS ARE OPTIONAL. LEADS MUST ALWAYS BE NUMBERED AS SHOWN.

CD0007

REV. DESC: ADDED "CK" PLANT CODE			
REV. LTR: E	BY: EAH	REVISED: 05/06/99 17:1	TDR: 0181040
L00000		FILE: AAA00008370	MDL: -
		MTL: -	

BALDOR ELECTRIC Co.

3PH, DV, THERMAL, 12 LEADS