

ABB BALDOR RELIANCE III

Customer information packet

CFM3046A

.75HP, 1140RPM, 3PH, 60HZ, 48YZ, 3428M, OPEN

Class - None

Division - Not Applicable

Specifications

Enclosure	OPEN
Frame	48YZ
Frame Material	Steel
Frequency	60.00 Hz
Haz Area Class and Group	None
Haz Area Division	Not Applicable
Motor Letter Type	Three Phase
Output @ Frequency	.750 HP @ 60 HZ
Phase	3
Synchronous Speed @ Frequency	1200 RPM @ 60 HZ
Voltage @ Frequency	208.0 V @ 60 HZ 230.0 V @ 60 HZ 460.0 V @ 60 HZ
Agency Approvals	UR CSA
Ambient Temperature	40 °C
Auxiliary Box	NO AUXILLARY BOX
Auxiliary Box Lead Termination	None
Base Indicator	Rigid
Bearing Grease Type	Polyrex EM (-20F +300F)
Blower	None
Current @ Voltage	1.500 A @ 460.0 V 3.000 A @ 230.0 V 3.300 A @ 208.0 V 3.600 A @ 208.0 V
Design Code	B
Drip Cover	No Drip Cover
Duty Rating	CONT
Efficiency @ 100% Load	77.0 %
Electrically Isolated Bearing	Not Electrically Isolated
Feedback Device	NO FEEDBACK
Front Face Code	Standard

Part Detail

Revision	W
Type	AC
Mech. spec.	34J280
Base	
Status	PRD/A
Elec. spec.	34WGX426
Layout	34LYJ280
Eff. date	04-09-2026
CD Diagram	CD0007
Poles	06
Leads	12#18
Proprietary	False
Created date	01-01-0001

Front Shaft Indicator	None
Heater Indicator	No Heater
High Voltage Full Load Amps	1.5 a
Insulation Class	F
Inverter Code	Not Inverter
KVA Code	K
Lifting Lugs	No Lifting Lugs
Locked Bearing Indicator	No Locked Bearing
Motor Lead Exit	Terminal Panel Or Lead Hole
Motor Lead Quantity/Wire Size	12 @ 18 AWG
Motor Lead Termination	Flying Leads
Motor Standards	NEMA
Motor Type	3428M
Mounting Arrangement	F3
Number of Poles	6
Overall Length	16.02 IN
Power Factor	59
Product Family	General Purpose
Pulley End Bearing Type	Ball
Pulley Face Code	Resilient Mount
Pulley Shaft Indicator	Key And Flat
Rodent Screen	None
Service Factor	1.00
Shaft Diameter	0.625 IN
Shaft Extension Location	Pulley End
Shaft Ground Indicator	No Shaft Grounding
Shaft Rotation	Reversible
Shaft Slinger Indicator	No Slinger
Speed	1140 rpm
Speed Code	Single Speed
Starting Method	Direct on line
Thermal Device - Bearing	None
Thermal Device - Winding	None
Vibration Sensor Indicator	No Vibration Sensor

Winding Thermal 1

Automatic Thermal Overload

Winding Thermal 1 Location

SB

Winding Thermal 2

None

Nameplate

NP1257L									
CAT.NO.	CFM3046A								
SPEC.	34J280X426G1								
HP	.75								
VOLTS	208-230/460								
AMP	3.3-3/1.5								
RPM	1140								
FRAME	48YZ		HZ	60		PH	3		
SER.F.	1.00	CODE	K	DES	B	CL	F		
NEMA-NOM-EFF	77	PF	59						
RATING	60C AMB-CONT								
CC									
DE	6203	ODE	6203						
ENCL	OPEN	SN							

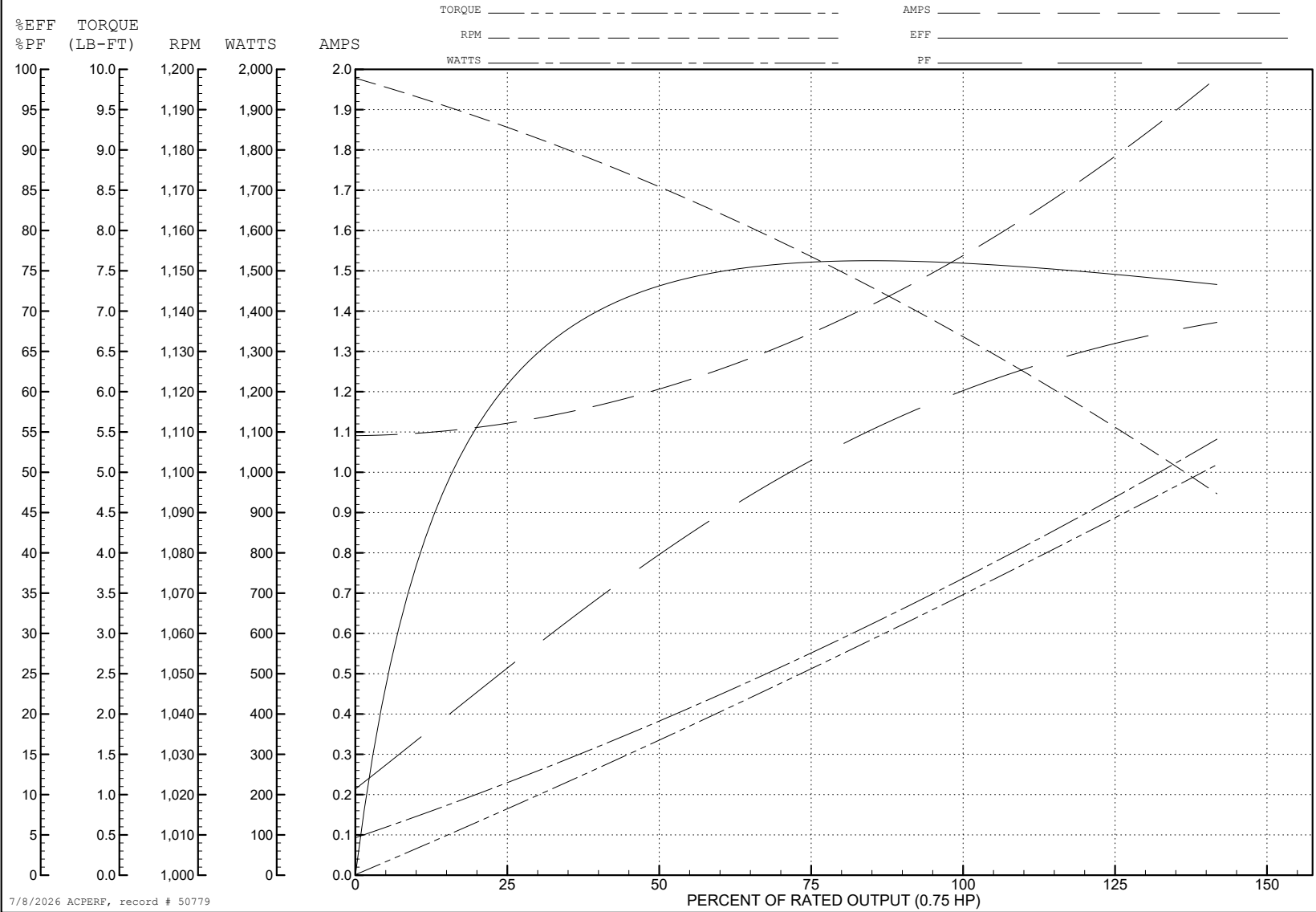
ABB Motors and Mechanical Inc.

WINDING # 34WGx426

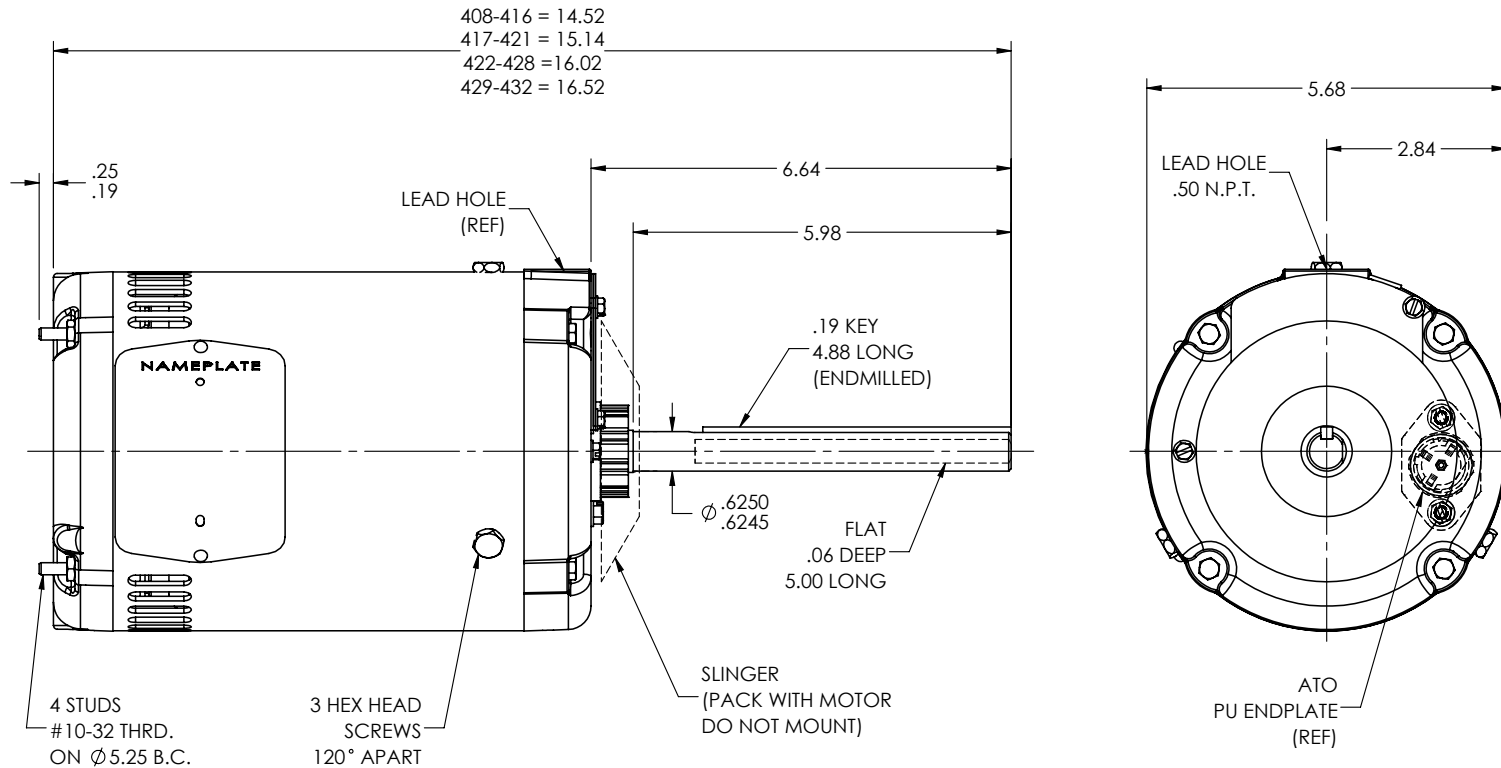
0.75 HP 3 PH 60 HZ 1140 RPM 460 V 3428M

Typical performance - not guaranteed values.

TORQUES (LB-FT): PO=11.8 PU=9.3 LR=9.7 LRA=7.4



34LYJ280



CUSTOMER IS RESPONSIBLE FOR DETERMINING THAT THE PRODUCT WILL PERFORM SUITABLY IN THE INTENDED APPLICATION

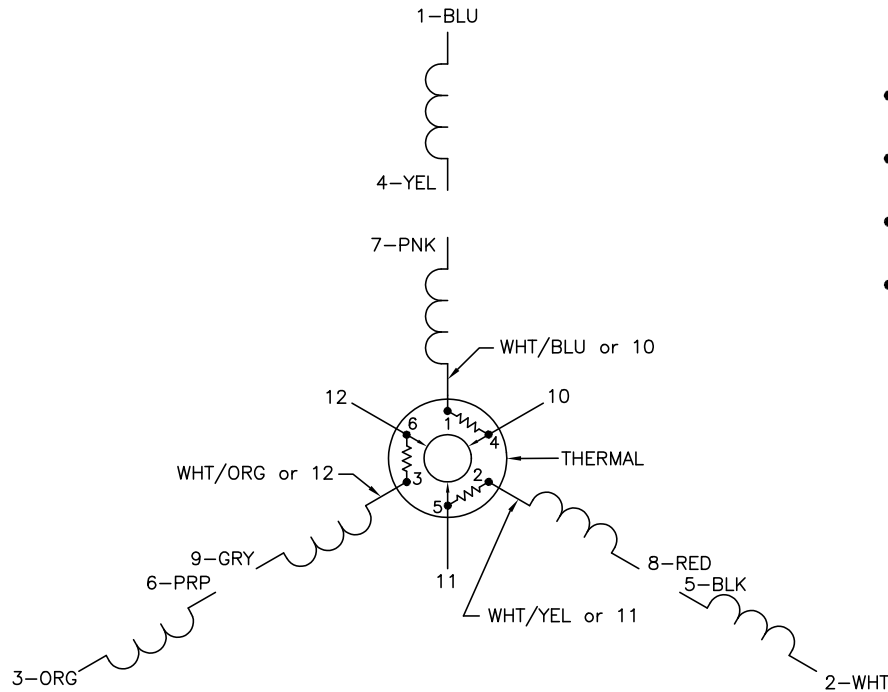
REV. DESC: LOAD TO SOLIDWORKS - REV E			
REV: F	VERSION: 04	REVISED: 11:36:37 01/05/2023	TDR: 000001201165
34LYJ280	MODEL NO. 34LYJ280	REF: -	
	BY: ENFRAJ0		

BALDOR - RELIANCE®

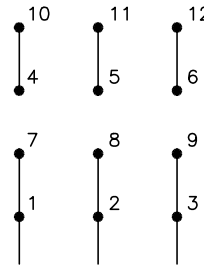
VER 34M NEMA 48YZ OPEN W/ATO IN EP

34LYJ280

CD0007

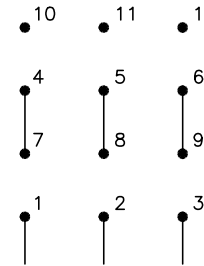


LOW VOLTAGE
(2Y)



LINE

HIGH VOLTAGE
(1Y)



LINE

NOTES:

1. INTERCHANGE ANY TWO LINE LEADS TO REVERSE ROTATION.
2. ACTUAL NUMBER OF INTERNAL PARALLEL CIRCUITS MAY VARY.
3. LEAD COLORS ARE OPTIONAL. LEADS MUST ALWAYS BE NUMBERED AS SHOWN.

CD0007

REV. DESC: ADDED "CK" PLANT CODE			
REV. LTR: E	BY: EAH	REVISED: 05/06/99 17:1	TDR: 0181040
∟00000		FILE: AAA00008370	MDL: -
		MTL: -	

BALDOR ELECTRIC Co.

3PH, DV, THERMAL, 12 LEADS