



Customer information packet

CFM3036A

.5HP, 1140RPM, 3PH, 60HZ, 48YZ, 3418M, OPEN, F1

Class - None

Division - Not Applicable

Specifications

Enclosure	OPEN
Frame	48YZ
Frame Material	Steel
Frequency	60.00 Hz
Haz Area Class and Group	None
Haz Area Division	Not Applicable
Motor Letter Type	Three Phase
Output @ Frequency	.500 HP @ 60 HZ
Phase	3
Synchronous Speed @ Frequency	1200 RPM @ 60 HZ
Voltage @ Frequency	460.0 V @ 60 HZ 230.0 V @ 60 HZ 208.0 V @ 60 HZ
Agency Approvals	CSA UR
Ambient Temperature	40 °C
Auxillary Box	No Auxillary Box
Auxillary Box Lead Termination	None
Base Indicator	No Mounting
Bearing Grease Type	Polyrex EM (-20F +300F)
Blower	None
Current @ Voltage	2.500 A @ 208.0 V 2.400 A @ 230.0 V 1.200 A @ 460.0 V
Design Code	B
Drip Cover	No Drip Cover
Duty Rating	CONT
Efficiency @ 100% Load	72.0 %
Electrically Isolated Bearing	Not Electrically Isolated
Feedback Device	NO FEEDBACK
Front Face Code	Standard
Front Shaft Indicator	None

Part detail

Revision	U
Type	AC
Mech. spec.	34J288
Base	
Status	PRD/A
Elec. spec.	34WGW529
Layout	34LYJ288
Eff. date	09-18-2023
CD Diagram	CD0007
Poles	06
Leads	12#18
Proprietary	False
Created date	01-01-0001

Heater Indicator	No Heater
High Voltage Full Load Amps	1.2 a
Insulation Class	F
Inverter Code	Not Inverter
KVA Code	J
Lifting Lugs	No Lifting Lugs
Locked Bearing Indicator	No Locked Bearing
Motor Lead Exit	Terminal Panel Or Lead Hole
Motor Lead Quantity/Wire Size	12 @ 18 AWG
Motor Lead Termination	Flying Leads
Motor Standards	NEMA
Motor Type	3418M
Mounting Arrangement	F1
Number of Poles	6
Overall Length	14.29 IN
Power Factor	55
Product Family	General Purpose
Pulley End Bearing Type	Ball
Pulley Face Code	Resilient Mount
Pulley Shaft Indicator	Key And Flat
Rodent Screen	None
Service Factor	1.00
Shaft Diameter	0.500 IN
Shaft Extension Location	Pulley End
Shaft Ground Indicator	No Shaft Grounding
Shaft Rotation	Reversible
Shaft Slinger Indicator	No Slinger
Speed	1140 rpm
Speed Code	Single Speed
Starting Method	Direct on line
Thermal Device - Bearing	None
Thermal Device - Winding	None
Vibration Sensor Indicator	No Vibration Sensor
Winding Thermal 1	Automatic Thermal Overload

Winding Thermal 1 Location

SB

Winding Thermal 2

None

Nameplate

NP1257L									
CAT.NO.	CFM3036A								
SPEC.	34J288W529G1								
HP	.5								
VOLTS	208-230/460								
AMP	2.5-2.4/1.2								
RPM	1140								
FRAME	48YZ			HZ	60		PH	3	
SER.F.	1.00	CODE	J	DES	B	CL	F		
NEMA-NOM-EFF	72	PF	55						
RATING	60C AMB-CONT								
CC									
DE	6203	ODE	6203						
ENCL	OPEN	SN							

AC Induction Motor Performance Data

Record # 50780

Typical performance - not guaranteed values

Winding: 34WGW529-R002		Type: 3418M		Enclosure: OPEN	
Nameplate Data			460 V, 60 Hz: High Voltage Connection		
Rated Output (HP)	.5		Full Load Torque	2.3 LB-FT	
Volts	208-230/460		Start Configuration	direct on line	
Full Load Amps	2.5-2.4/1.2		Breakdown Torque	7.7 LB-FT	
R.P.M.	1140		Pull-up Torque	6 LB-FT	
Hz	60 Phase	3	Locked-rotor Torque	6.2 LB-FT	
NEMA Design Code	B KVA Code	J	Starting Current	5 A	
Service Factor (S.F.)	1		No-load Current	0.95 A	
NEMA Nom. Eff.	72 Power Factor	55	Line-line Res. @ 25°C	39.6 Ω	
Rating - Duty	40C AMB-CONT		Temp. Rise @ Rated Load		

Load Characteristics 460 V, 60 Hz, 0.5 HP

% of Rated Load	25	50	75	100	125	150
Power Factor	20	34	45	55	62	68
Efficiency	48	63	67	72	72	71
Speed	1185	1170	1155	1140	1120	1100
Line amperes	0.95	1	1.1	1.2	1.3	1.5

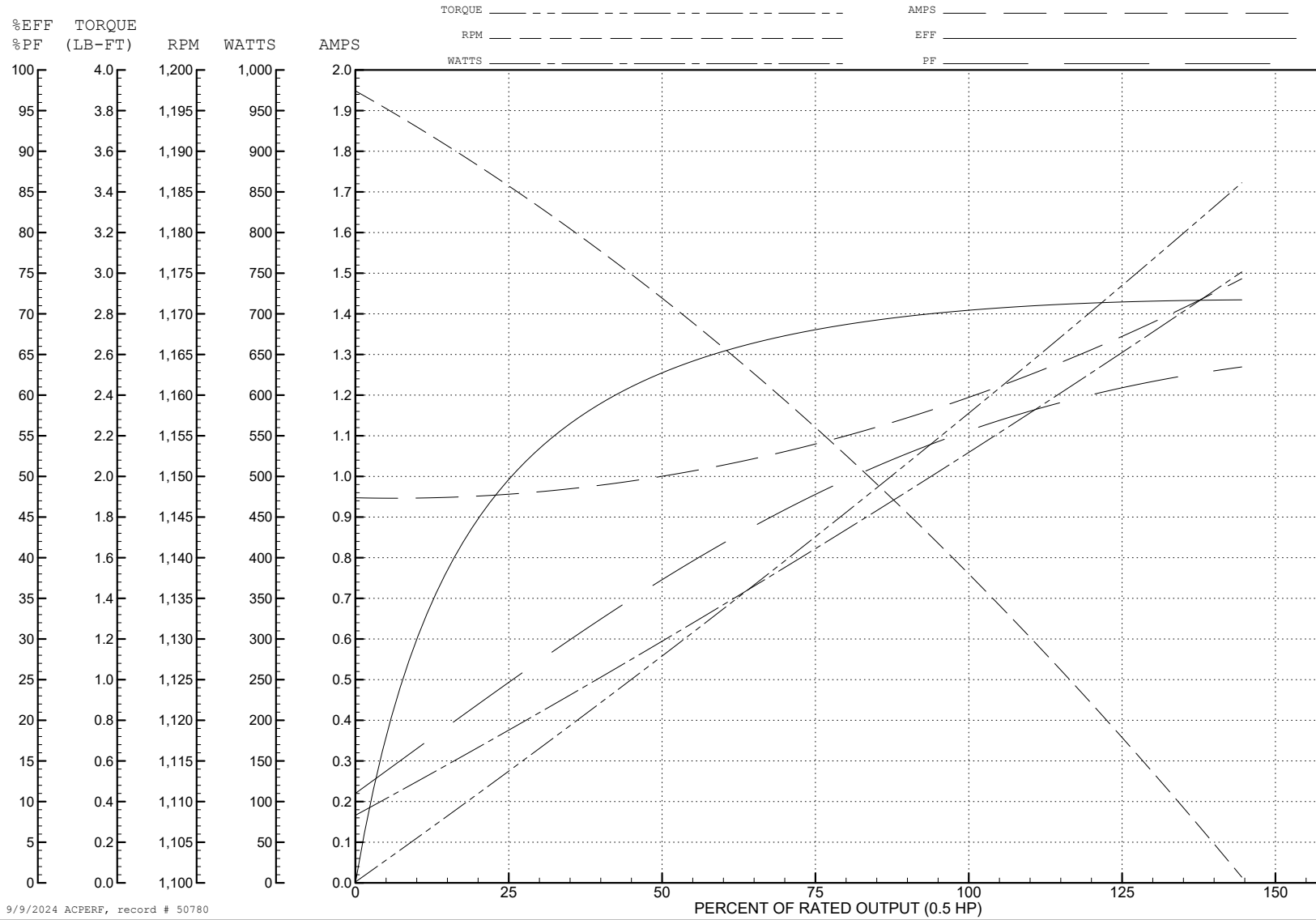
ABB Motors and Mechanical Inc.

WINDING # 34WG529

0.5 HP 3 PH 60 HZ 1140 RPM 460 V 3418M

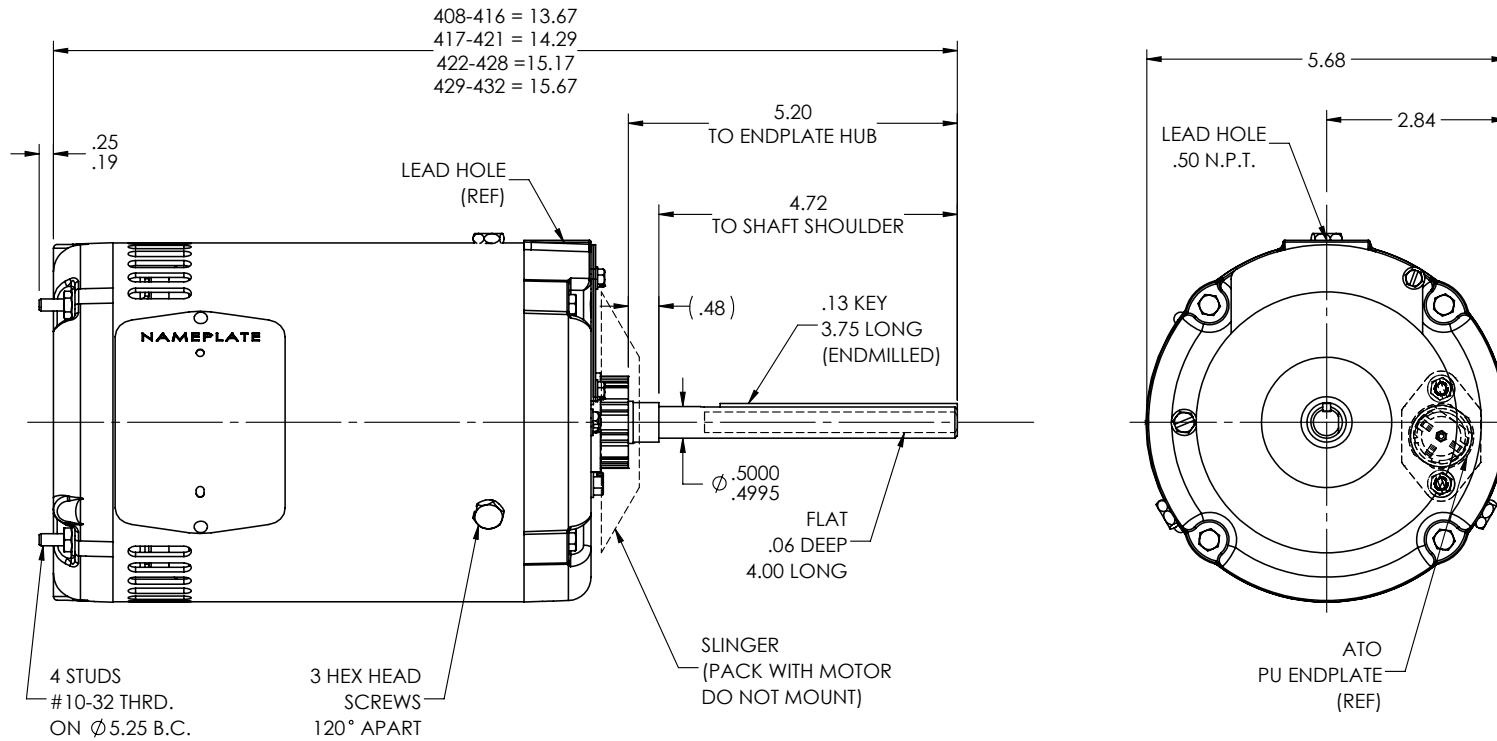
Typical performance - not guaranteed values.

TORQUES (LB-FT): PO=7.7 PU=6 L_R=6.2 L_{RA}=5



9/9/2024 ACPERF, record # 50780

34LYJ288



CUSTOMER IS RESPONSIBLE FOR DETERMINING THAT THE PRODUCT WILL PERFORM SUITABLY IN THE INTENDED APPLICATION

REV. DESC: LOAD TO SOLIDWORKS - REV G

REV: H VERSION: 04 REVISED: 11:30:58 01/05/2023 TDR: 000001201165

34LYJ288

MODEL NO. 34LYJ288
 BY: ENFRAJ0

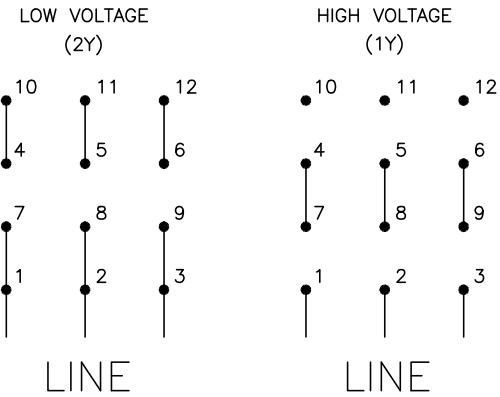
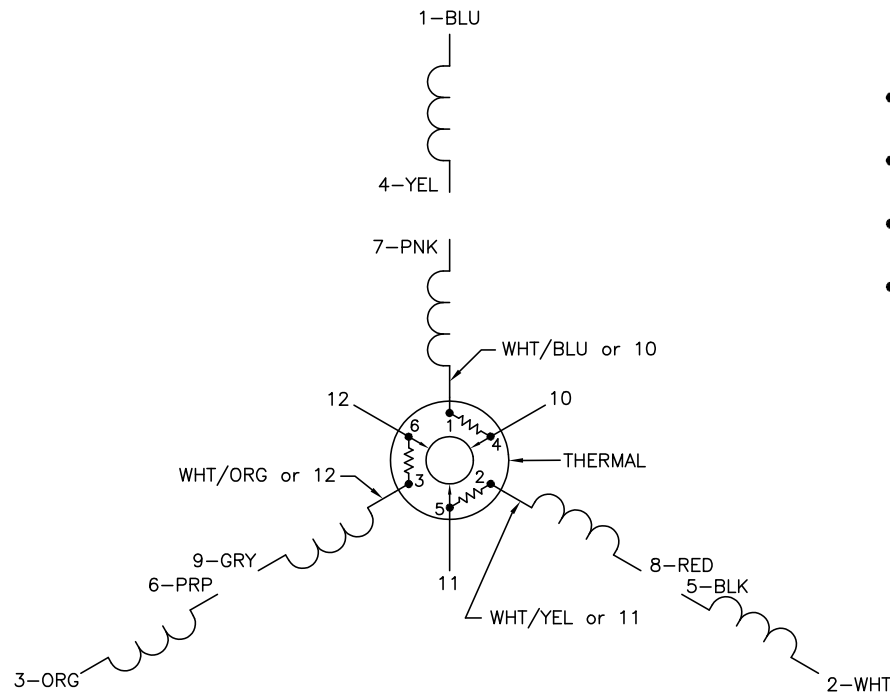
REF: -

BALDOR - RELIANCE®

VER 34M NEMA 48YZ OPEN W/ATO IN EP

34LYJ288

CD0007



- NOTES:
1. INTERCHANGE ANY TWO LINE LEADS TO REVERSE ROTATION.
 2. ACTUAL NUMBER OF INTERNAL PARALLEL CIRCUITS MAY VARY.
 3. LEAD COLORS ARE OPTIONAL. LEADS MUST ALWAYS BE NUMBERED AS SHOWN.

CD0007

REV. DESC: ADDED "CK" PLANT CODE			
REV. LTR: E	BY: EAH	REVISED: 05/06/99 17:1	TDR: 0181040
L00000		FILE: AAA00008370	MDL: -
		MTL: -	

BALDOR ELECTRIC Co.

3PH, DV, THERMAL, 12 LEADS