

ENCLOSURE: TOTALLY ENCLOSED

MOUNTING: FOOT, F-1 SIDE

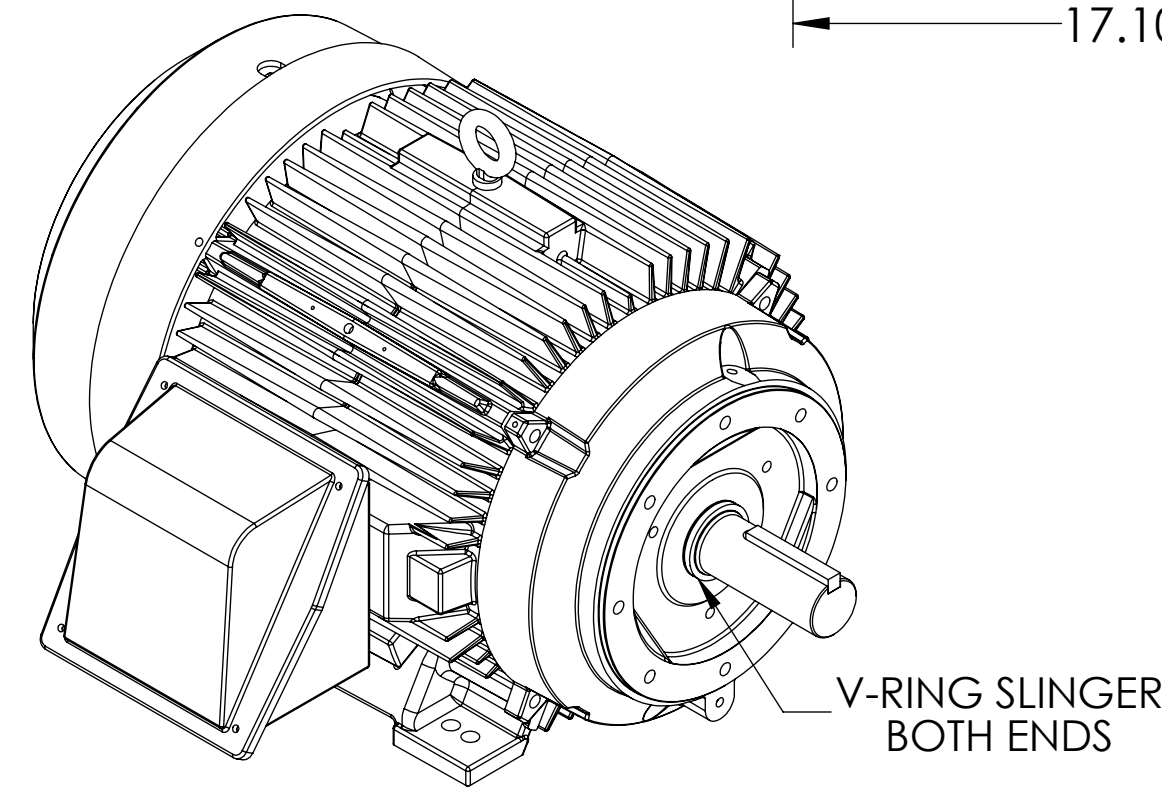
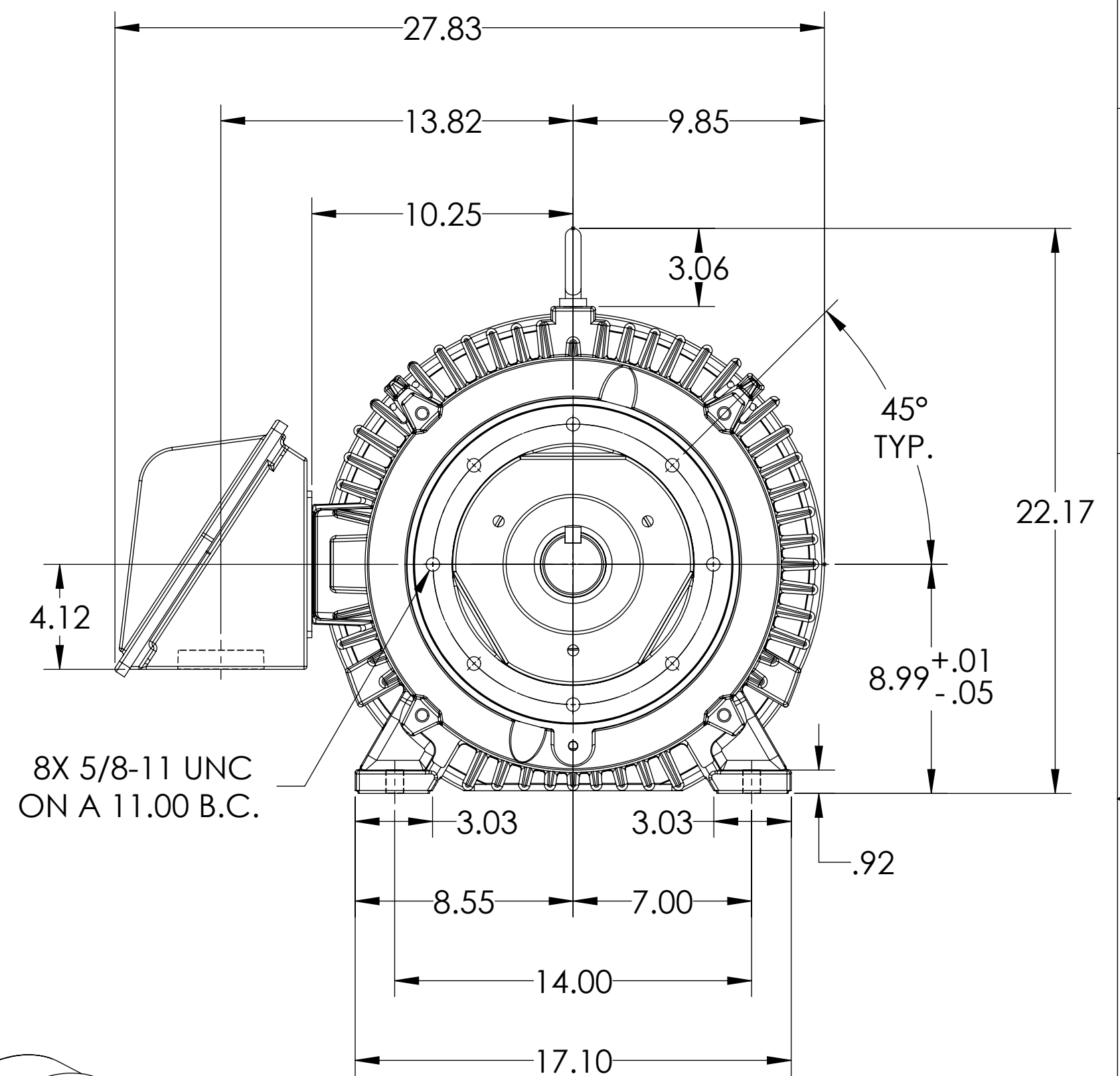
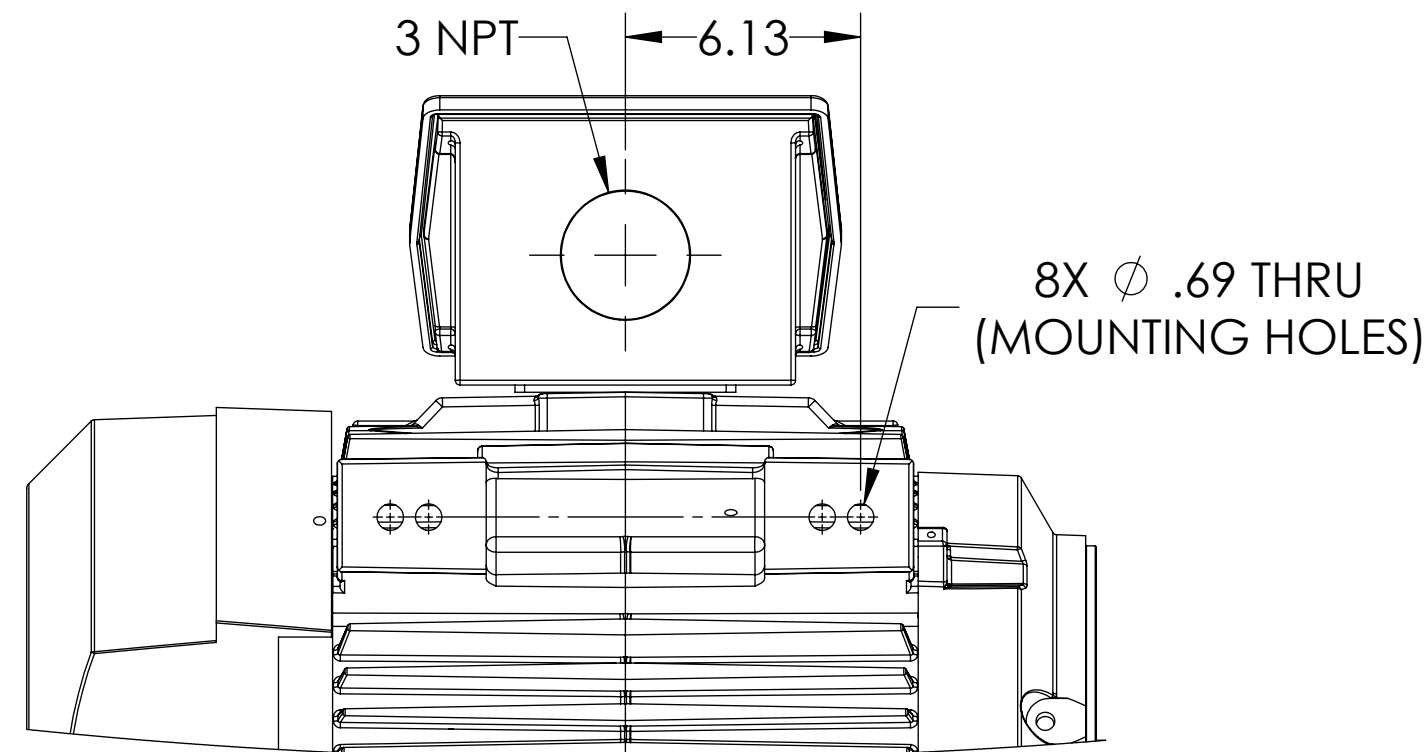
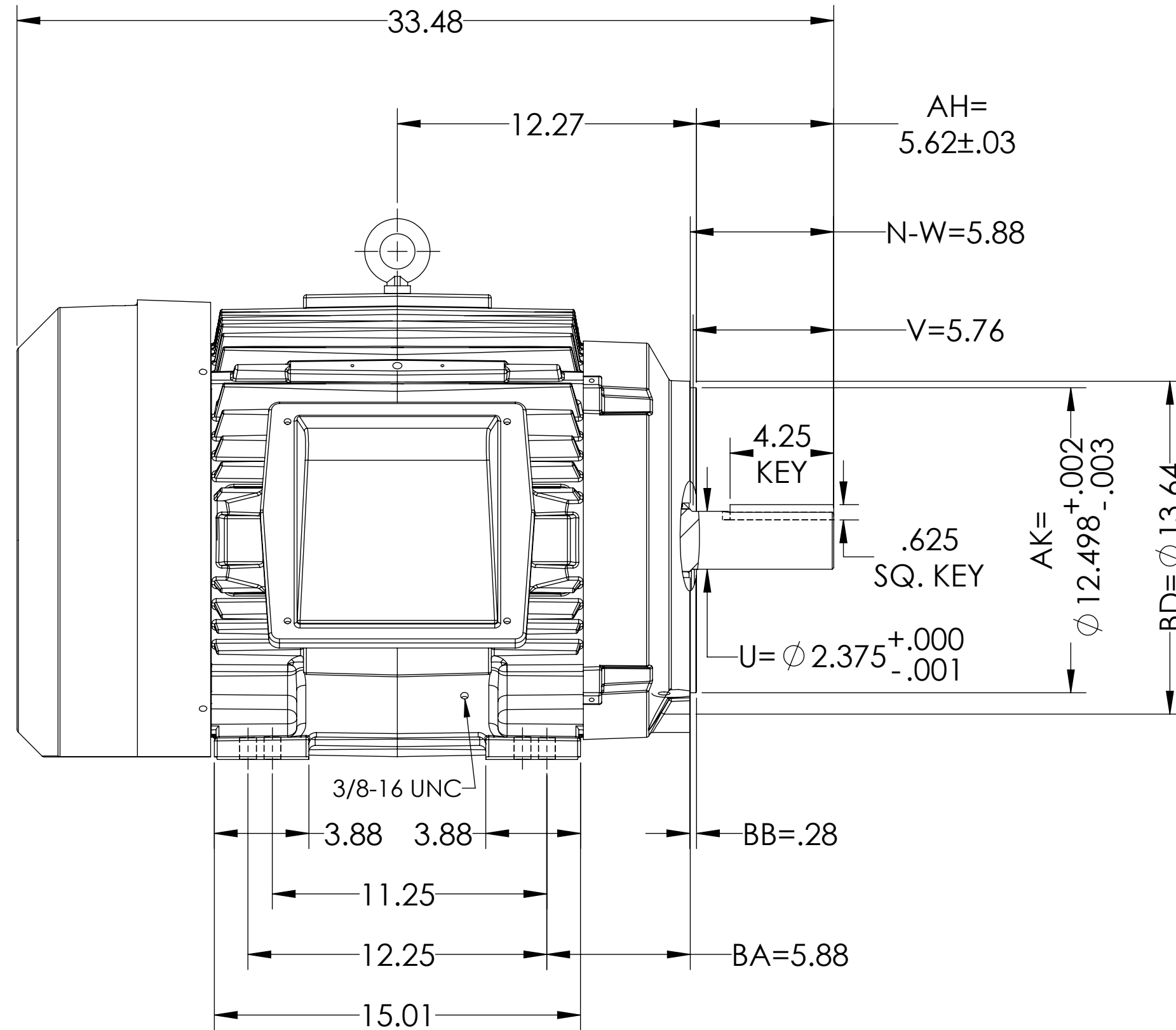
# DUTY MASTER ALTERNATING CURRENT MOTORS

## SQUIRREL-CAGE INDUCTION

E365TC/E364TC MOUNTING HOLES

COOLING: FAN COOLED

617428-348



SHEET NUMBER  
1 OF 1

617428-348

FACE & ECCENTRICITY RUNOUT = .007 T.I.R. MAX.  
IF MOUNTING CLEARANCE DETAILS ARE REQUIRED, CONSULT FACTORY.  
MAX PERMISSIBLE SHAFT RUNOUT WHEN MEASURED AT END OF STANDARD SHAFT EXTENSION IS .003" T.I.R.

CUSTOMER IS RESPONSIBLE FOR DETERMINING THAT MOTOR PERFORMANCE IS SUITABLE IN THE APPLICATION.

REV. DESC: FROM AN AH OF 3.50 TO AN AH OF 5.62

REV: A

VERSION: 01

REVISED: 08:21:20 03/21/2018

TDR: 000001065046

MODEL NO. 617428-348

BY: USJEDIL

**BALDOR**

E365/364TC TEFC FOOT F1/CI CONDUIT BOX/SLINGERS/GROUND TAP

617428-348