

DUTY MASTER ALTERNATING CURRENT MOTORS

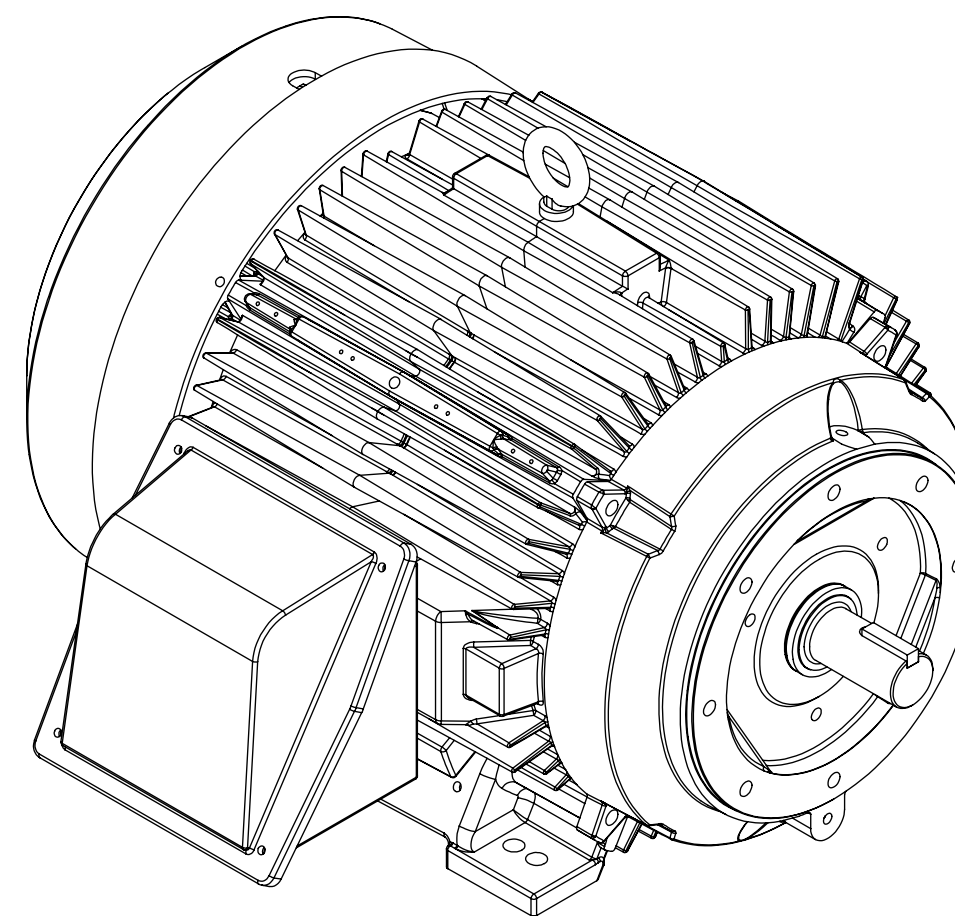
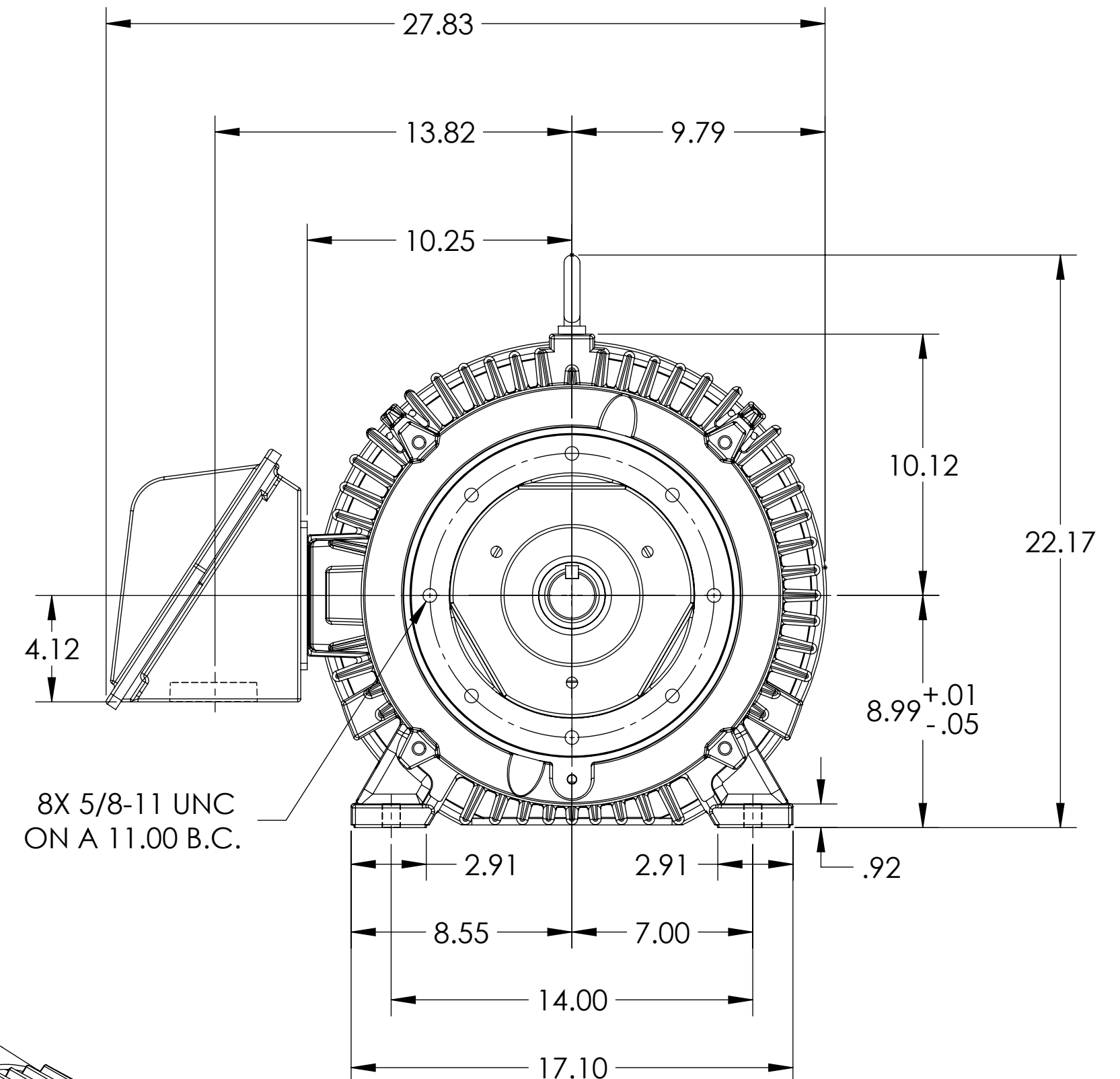
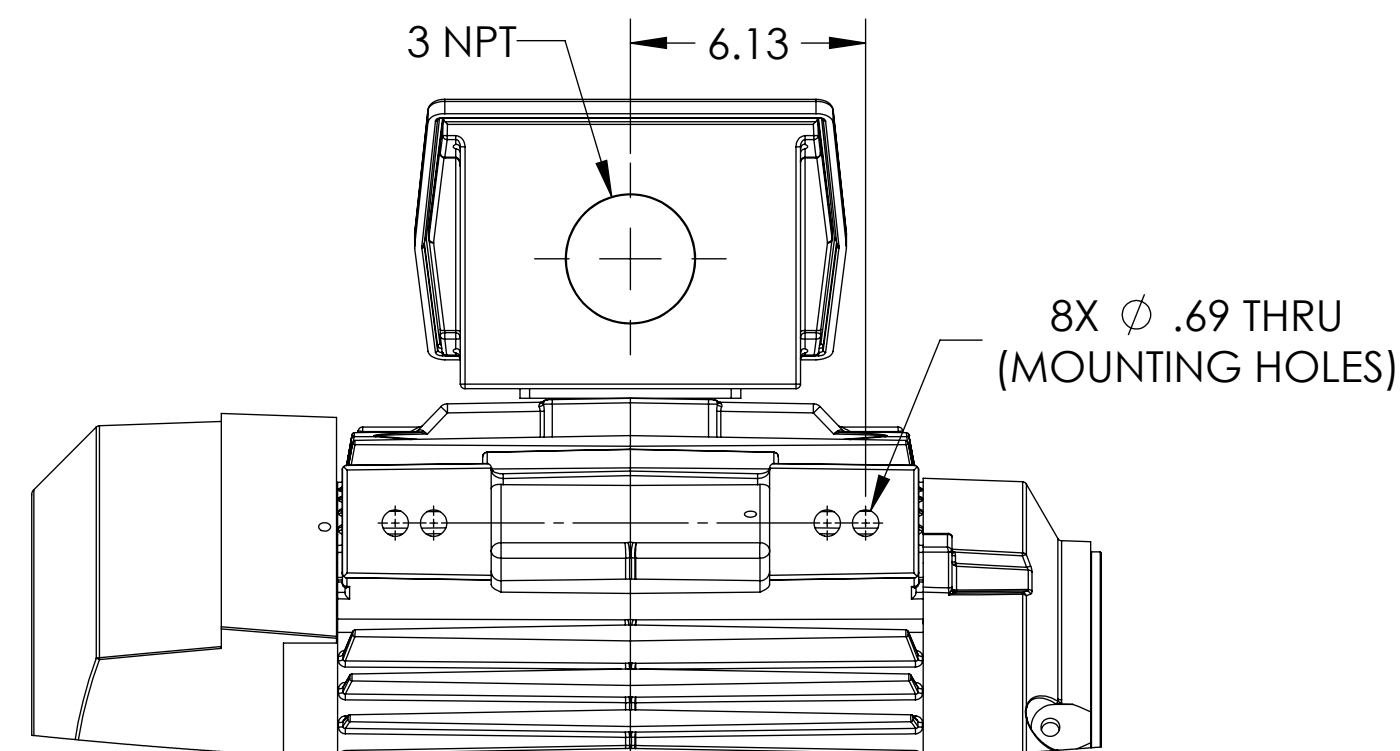
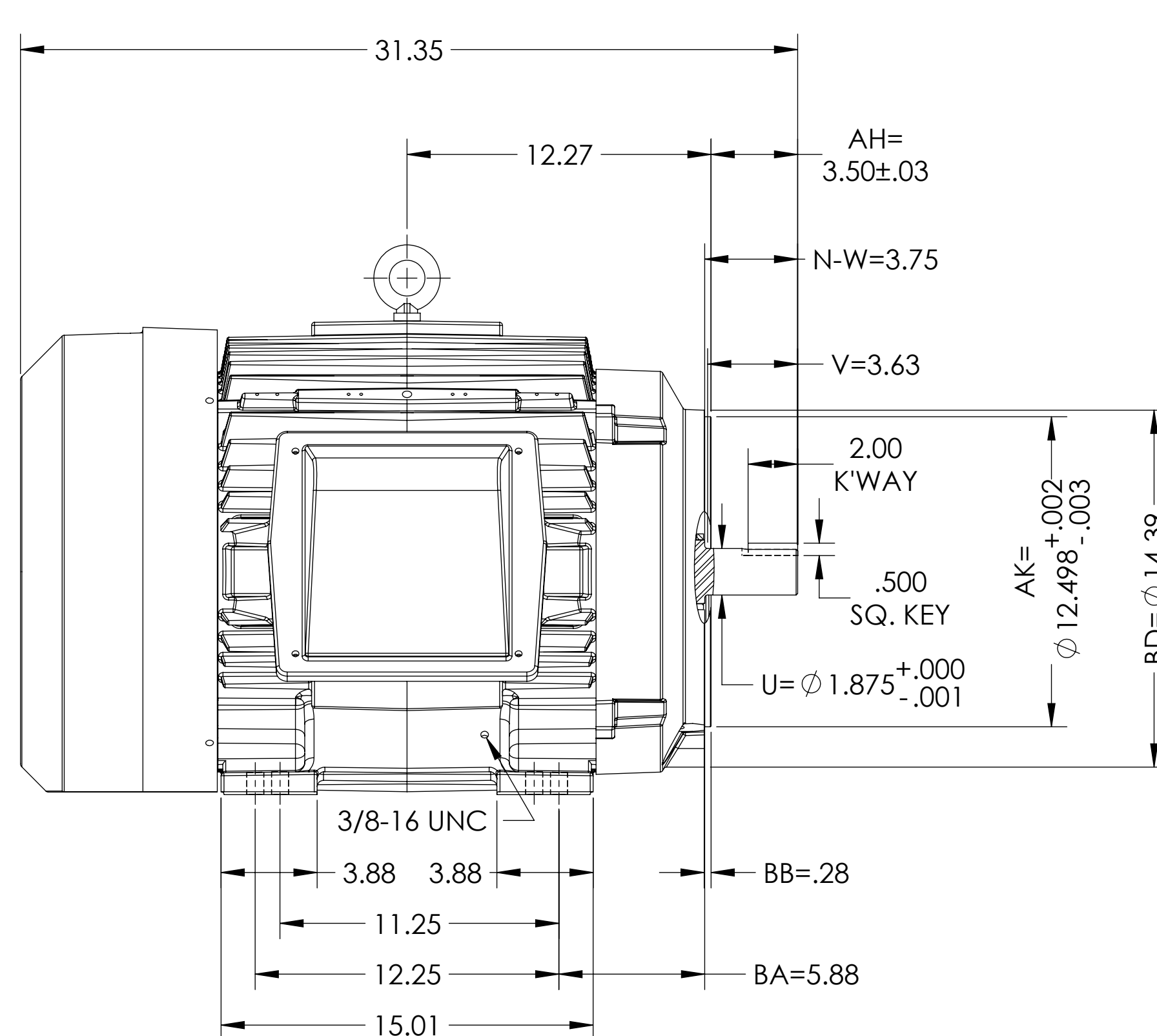
SQUIRREL-CAGE INDUCTION

ENCLOSURE: TOTALLY ENCLOSED

MOUNTING: FOOT, F-1 SIDE

E365TSC/E364TSC MOUNTING HOLES

COOLING: FAN COOLED



DIMENSIONS ARE IN INCHES.
WEIGHT = 900 LBS +/- 15% DEPENDING ON RATING.
CUSTOMER IS RESPONSIBLE FOR DETERMINING THAT MOTOR PERFORMANCE IS SUITABLE IN THE APPLICATION.

REV. DESC: UPDATE DS QUALITY			
REV: A	VERSION: 01	REVISED: 11:26:22 07/25/2023	TDR: 000001213202
MODEL NO. 617428-135			
BY: USJEDIL		C	

BALDOR

E365/364TSC TEFC FOOT F1/CAST IRON CONDUIT BOX

SHEET NUMBER
1 OF 2

617428-135

FACE & ECCENTRICITY RUNOUT = .007 T.I.R.
IF MOUNTING CLEARANCE DETAILS ARE REQUIRED, CONSULT FACTORY.
MAX PERMISSIBLE SHAFT RUNOUT WHEN MEASURED AT END OF STANDARD SHAFT EXTENSION IS .003" T.I.R.

DUTY MASTER ALTERNATING CURRENT MOTORS
SQUIRREL-CAGE INDUCTION

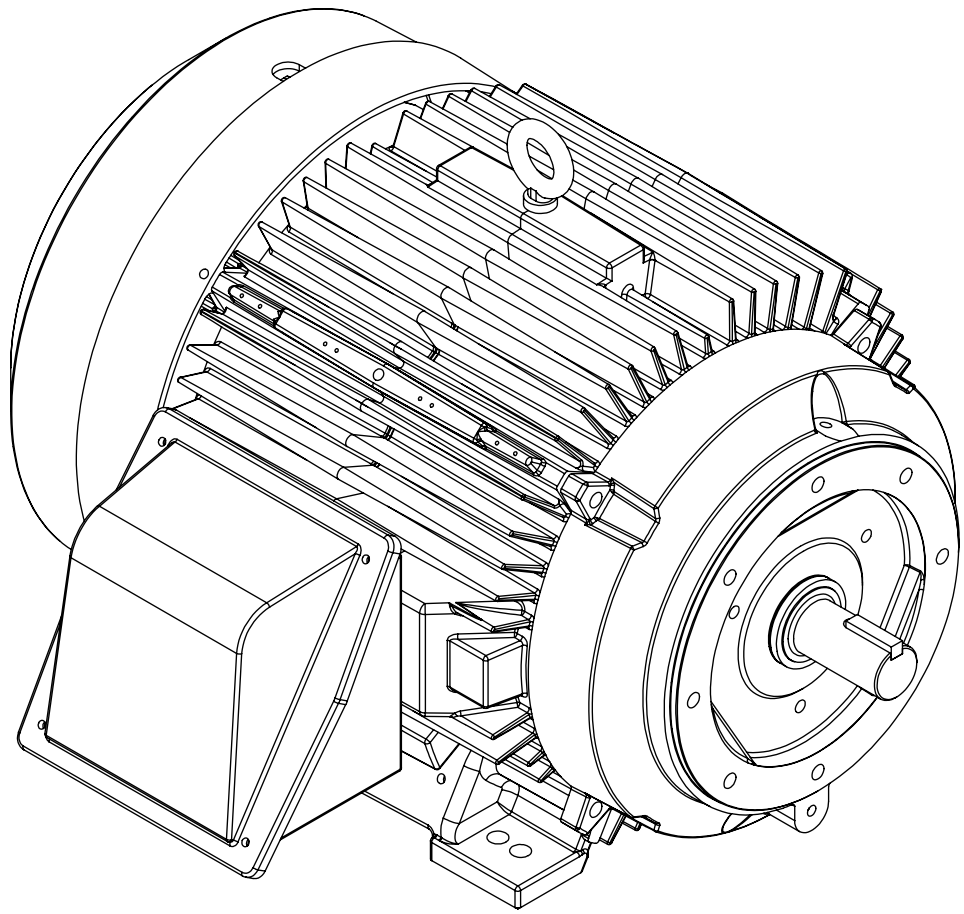
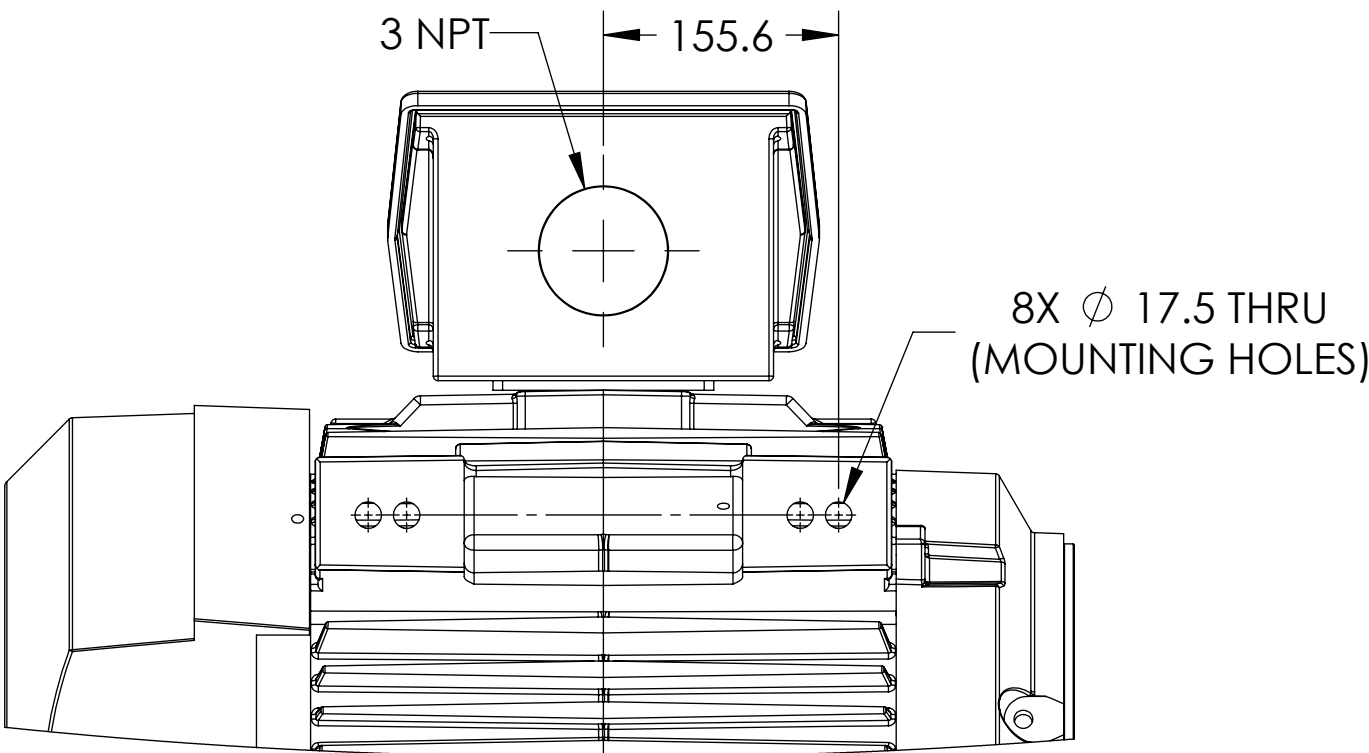
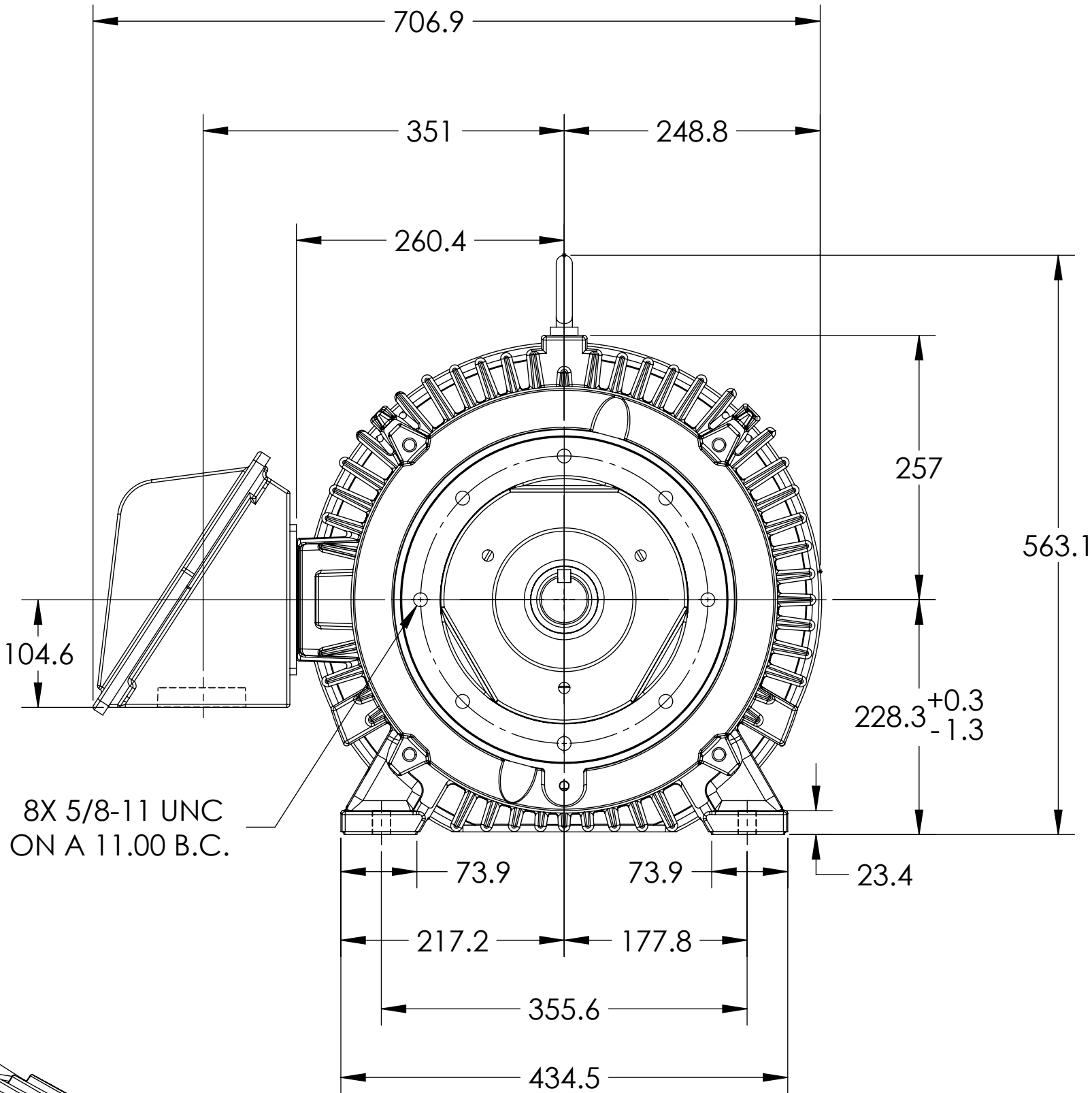
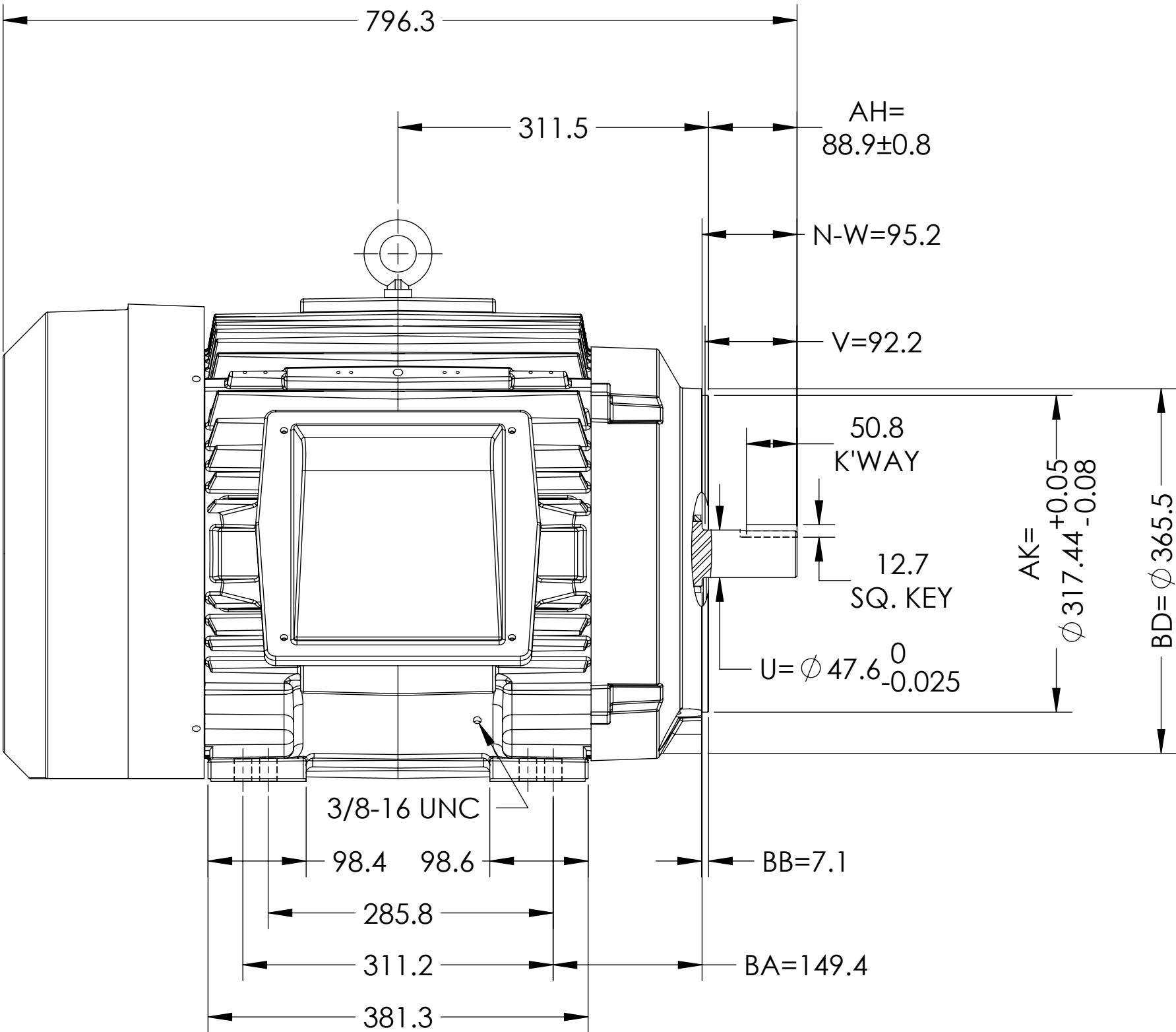
617428-135

ENCLOSURE: TOTALLY ENCLOSED

MOUNTING: FOOT, F-1 SIDE

E365TSC/E364TSC MOUNTING HOLES

COOLING: FAN COOLED



DIMENSIONS ARE IN MILLIMETERS.
WEIGHT = 408 KG +/- 15% DEPENDING ON RATING.
CUSTOMER IS RESPONSIBLE FOR DETERMINING THAT MOTOR PERFORMANCE IS SUITABLE IN THE APPLICATION.

REV. DESC: UPDATE DS QUALITY			
REV: A	VERSION: 01	REVISED: 11:26:22 07/25/2023	TDR: 000001213202
MODEL NO. 617428-135			
BY: USJEDIL		C	

BALDOR

E365/364TSC TEFC FOOT F1/CAST IRON CONDUIT BOX

SHEET NUMBER
2 OF 2

617428-135

FACE & ECCENTRICITY RUNOUT = .18 T.I.R.
IF MOUNTING CLEARANCE DETAILS ARE REQUIRED, CONSULT FACTORY.
MAX PERMISSIBLE SHAFT RUNOUT WHEN MEASURED AT END OF STANDARD SHAFT EXTENSION IS .08 T.I.R.

617428-135