

BALDOR • RELIANCE

Customer information packet

CEWDM4114T

50HP, 3540RPM, 3PH, 60HZ, 326TSC, TEFC, F1

Class - None

Division - Not Applicable

Copyright © All product information within this document is subject to ABB Motors and Mechanical Inc. copyright © protection, unless otherwise noted.

9/12/2024 9:19:18 PM

Specifications

| | |
|--------------------------------|---|
| Enclosure | TEFC |
| Frame | 326TSC |
| Frame Material | Iron |
| Frequency | 60.00 Hz |
| Haz Area Class and Group | None |
| Haz Area Division | Not Applicable |
| Motor Letter Type | Three Phase |
| Output @ Frequency | 50.000 HP @ 60 HZ |
| Phase | 3 |
| Synchronous Speed @ Frequency | 3600 RPM @ 60 HZ |
| Voltage @ Frequency | 230.0 V @ 60 HZ 460.0 V @ 60 HZ |
| Agency Approvals | CSA CSA EEV NEMA PREMIUM UR |
| Ambient Temperature | 40 °C |
| Auxillary Box | No Auxillary Box |
| Auxillary Box Lead Termination | None |
| Base Indicator | Rigid |
| Bearing Grease Type | Polyrex EM (-20F +300F) |
| Blower | None |
| Current @ Voltage | 56.000 A @ 460.0 V 112.000 A @ 230.0 V |
| Design Code | A |
| Drip Cover | No Drip Cover |
| Duty Rating | CONT |
| Efficiency @ 100% Load | 93.0 % |
| Electrically Isolated Bearing | Not Electrically Isolated |
| Enclosure Modification | Severe Duty Features |
| Feedback Device | NO FEEDBACK |
| Heater Indicator | No Heater |

Part detail

| | |
|--------------|------------|
| Revision | F |
| Type | AC |
| Mech. spec. | |
| Base | |
| Status | PRD/A |
| Elec. spec. | 12WGY291 |
| Layout | 12LYK093 |
| Eff. date | 02-21-2024 |
| CD Diagram | CD0180 |
| Poles | 02 |
| Leads | 9#8 |
| Proprietary | False |
| Created date | 08-15-2019 |

| | |
|-----------------------------|-----------------------|
| High Voltage Full Load Amps | 56.0 a |
| Insulation Class | F |
| Inverter Code | Inverter Duty |
| IP Rating | IP55 |
| KVA Code | H |
| Lifting Lugs | Standard Lifting Lugs |
| Locked Bearing Indicator | Locked Bearing |
| Max Speed | 5400 rpm |
| Motor Lead Termination | Flying Leads |
| Motor Standards | NEMA |
| Motor Type | 1252M |
| Mounting Arrangement | F1 |
| Number of Poles | 2 |
| Overall Length | 28.77 IN |
| Power Factor | 90 |
| Product Family | Washdown Features |
| Pulley Face Code | C-Face |
| Rodent Screen | None |
| Service Factor | 1.00 |
| Shaft Diameter | 1.875 IN |
| Shaft Ground Indicator | No Shaft Grounding |
| Shaft Rotation | Reversible |
| Speed | 3540 rpm |
| Speed Code | Single Speed |
| Starting Method | Direct on line |
| Thermal Device - Bearing | None |
| Thermal Device - Winding | None |
| Vibration Sensor Indicator | No Vibration Sensor |
| Winding Thermal 1 | None |
| Winding Thermal 2 | None |

Nameplate

| NP1669L | | | | | | | | | |
|---------------------|--------------------|-------------|------|------------|---|--------------|---|--|--|
| CAT.NO. | CEWDM4114T | | | | | | | | |
| SPEC. | 12-0000-0911 | | | | | | | | |
| HP | 50 | | | | | | | | |
| VOLTS | 230/460 10:1 CT/VT | | | | | | | | |
| AMP | 112/56 | | | | | | | | |
| RPM | 3540 | | | | | | | | |
| FRAME | 326TSC | HZ | 60 | PH | 3 | | | | |
| SER.F. | 1.00 | CODE | H | DES | A | CLASS | F | | |
| NEMA-NOM-EFF | 93 | PF | 90 | | | | | | |
| RATING | 40C AMB-CONT | | | | | | | | |
| CC | 010A | | | | | | | | |
| DE | 6312 | ODE | 6311 | | | | | | |
| ENCL | TEFC | SN | | | | | | | |
| BLANK | 1.15SF ON SINEWAVE | | | | | | | | |

AC Induction Motor Performance Data

Record # 78204

Typical performance - not guaranteed values

| Winding: 12WGY291-R008 | | Type: 1252M | | Enclosure: TEFC | |
|-------------------------------|--------------|----------------------------|--|------------------------------|-----------|
| Nameplate Data | | | 460 V, 60 Hz: High Voltage Connection | | |
| Rated Output (HP) | 50 | Full Load Torque | 74.4 LB-FT | | |
| Volts | 230/460 | Start Configuration | direct on line | | |
| Full Load Amps | 112/56 | Breakdown Torque | 292 LB-FT | | |
| R.P.M. | 3540 | Pull-up Torque | 112 LB-FT | | |
| Hz | 60 | Phase | 3 | Locked-rotor Torque | 139 LB-FT |
| NEMA Design Code | A | KVA Code | H | Starting Current | 408 A |
| Service Factor (S.F.) | 1 | No-load Current | 14.9 A | | |
| NEMA Nom. Eff. | 93 | Power Factor | 90 | Line-line Res. @ 25°C | 0.11257 Ω |
| Rating - Duty | 40C AMB-CONT | | Temp. Rise @ Rated Load | 77°C | |
| | | | Locked-rotor Power Factor | 20.9 | |
| | | | Rotor inertia | 4.07 LB-FT ² | |

Load Characteristics 460 V, 60 Hz, 50 HP

| % of Rated Load | 25 | 50 | 75 | 100 | 125 | 150 |
|------------------------|-----------|-----------|-----------|------------|------------|------------|
| Power Factor | 66 | 82 | 88 | 90 | 91 | 90 |
| Efficiency | 91.1 | 93.8 | 94.2 | 93.9 | 93.2 | 92.3 |
| Speed | 3584.1 | 3571.8 | 3558.2 | 3544.1 | 3528.2 | 3511.2 |
| Line amperes | 20.4 | 30.8 | 42.9 | 55.8 | 69.5 | 84.6 |

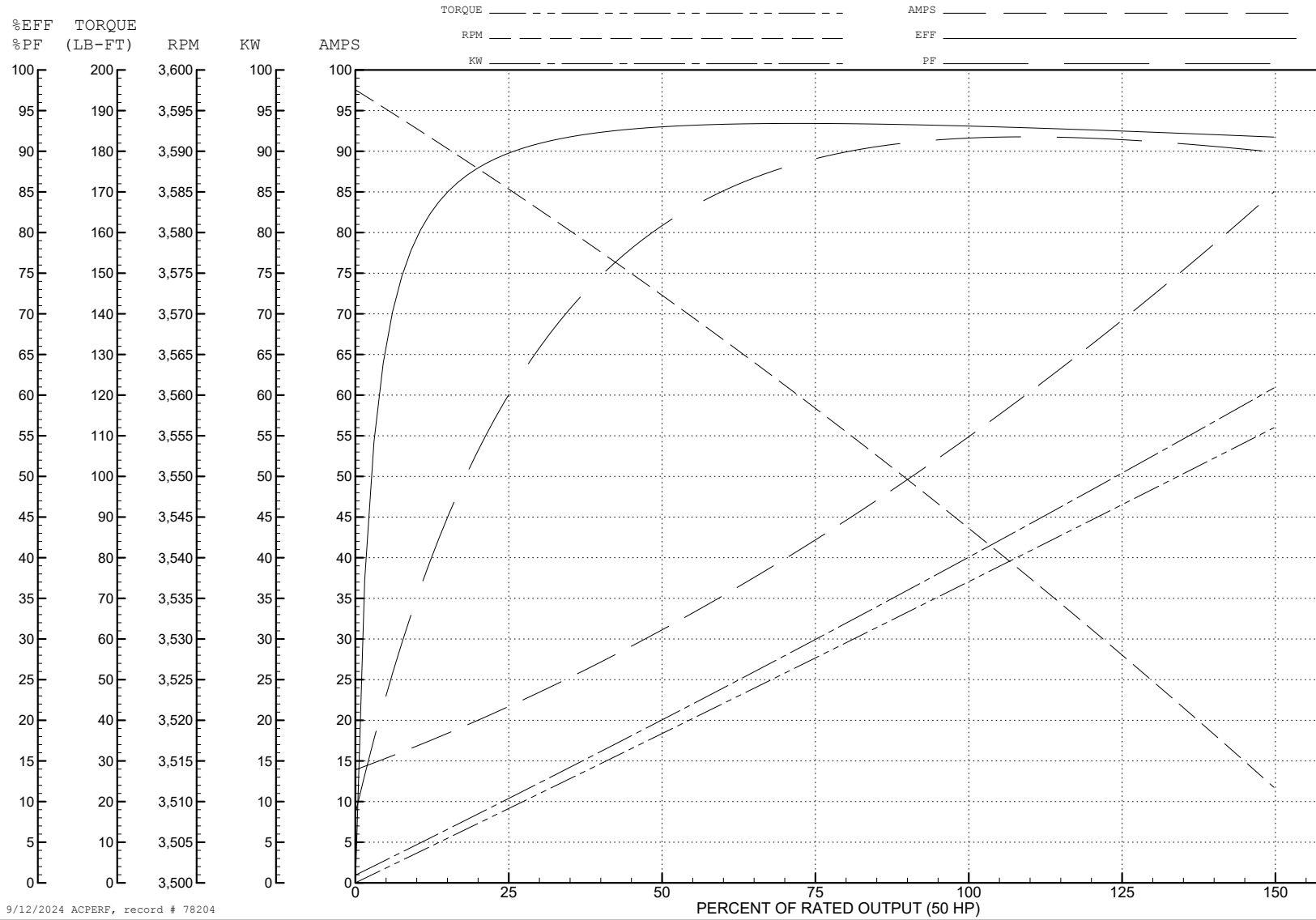
ABB Motors and Mechanical Inc.

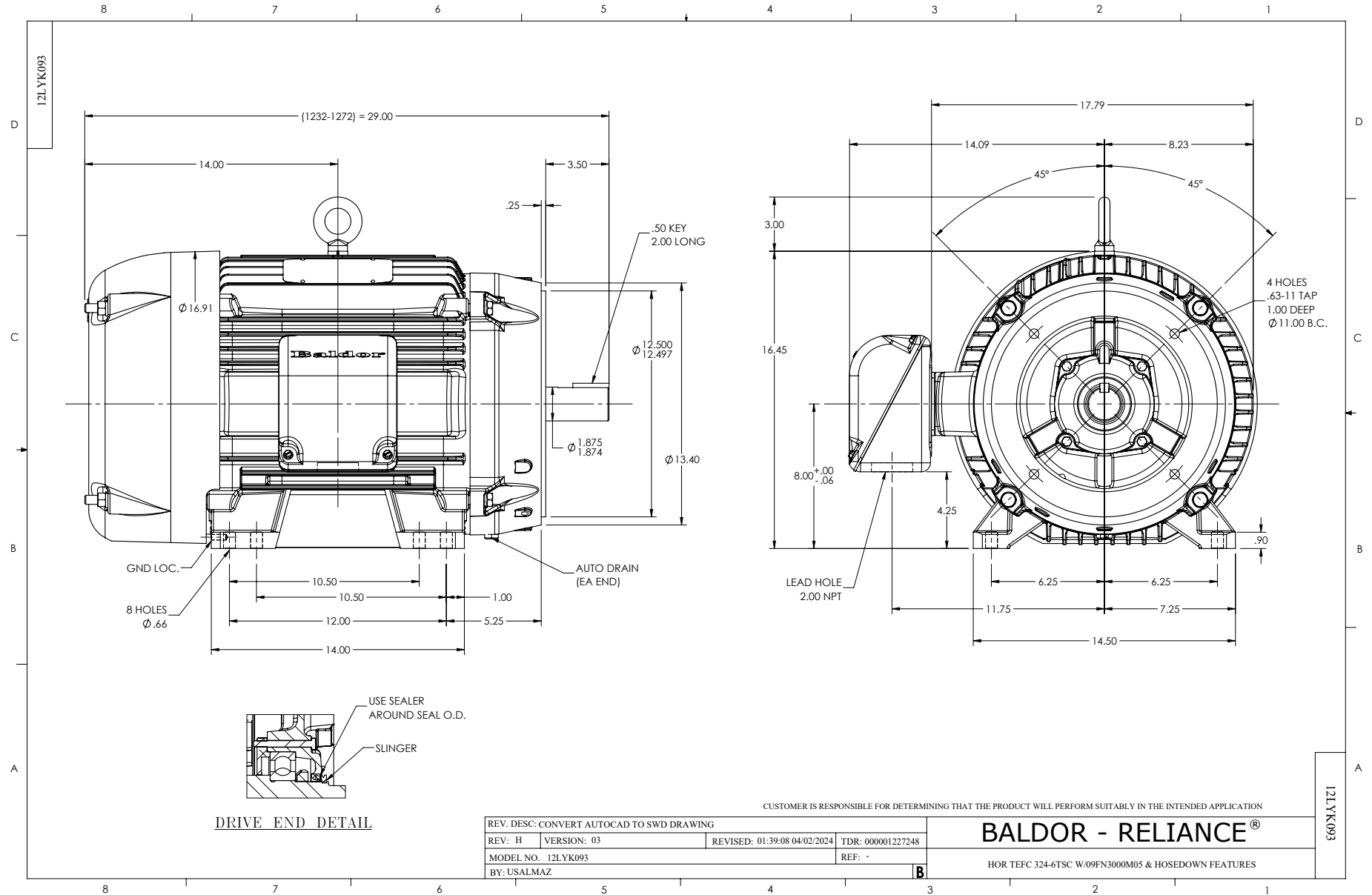
WINDING # 12WGY291

Typical performance - not guaranteed values.

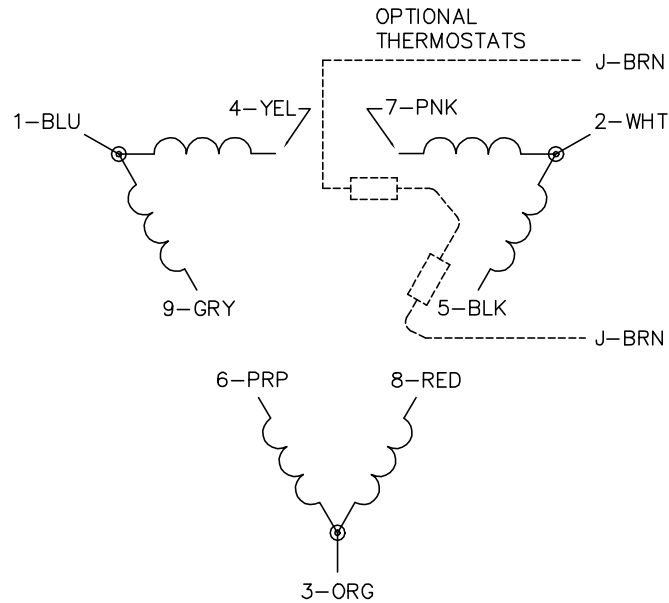
50 HP 3 PH 60 HZ 3540 RPM 460 V 1252M

TORQUES (LB-FT): PO=292 PU=112 LR=139 LRA=408





CD0180



LOW VOLTAGE
(2D)



HIGH VOLTAGE
(1D)



NOTES:

1. INTERCHANGE ANY TWO LINE LEADS TO REVERSE ROTATION.
2. OPTIONAL THERMOSTATS ARE PROVIDED WHEN SPECIFIED.
3. ACTUAL NUMBER OF INTERNAL PARALLEL CIRCUITS MAY BE A MULTIPLE OF THOSE SHOWN ABOVE.
4. LEAD COLORS ARE OPTIONAL. LEADS MUST ALWAYS BE NUMBERED AS SHOWN.

CD0180

| | | |
|-----------------------------------|--------------------------------|-------------------|
| REV. DESC: ADD CLASS CONN00000007 | | |
| REV. LTR: D | VERSION: 01 | TDR: 000001099922 |
| FILE: \AAA\00005\148 | REVISED: 10: 25: 29 02/19/2019 | BY: ENBRIRO |
| MTL: - | © □ | |

BALDOR - RELIANCE®

3PH, DV, 9 LEADS, DELTA CONNECTION

SH 1 of 1