

**BALDOR • RELIANCE**

---

# Customer information packet

## CEWDM4109T

40HP, 3530RPM, 3PH, 60HZ, 324TSC, TEFC, F1

Class - None

Division - Not Applicable

Copyright © All product information within this document is subject to ABB Motors and Mechanical Inc. copyright © protection, unless otherwise noted.

9/23/2023 6:21:00 PM

## Specifications

Enclosure	TEFC
Frame	324TSC
Frame Material	Iron
Frequency	60.00 Hz
Motor Letter Type	Three Phase
Output @ Frequency	40.000 HP @ 60 HZ
Phase	3
Synchronous Speed @ Frequency	3600 RPM @ 60 HZ
Voltage @ Frequency	230.0 V @ 60 HZ 460.0 V @ 60 HZ
XP Class and Group	None
XP Division	Not Applicable
Agency Approvals	CSA CSA EEV NEMA PREMIUM UR
Ambient Temperature	40 °C
Auxillary Box	No Auxillary Box
Auxillary Box Lead Termination	None
Base Indicator	Rigid
Bearing Grease Type	Polyrex EM (-20F +300F)
Blower	None
Current @ Voltage	90.000 A @ 230.0 V 45.000 A @ 460.0 V
Design Code	A
Drip Cover	No Drip Cover
Duty Rating	CONT
Efficiency @ 100% Load	92.4 %
Electrically Isolated Bearing	Not Electrically Isolated
Enclosure Modification	Severe Duty Features
Feedback Device	NO FEEDBACK
Heater Indicator	No Heater

## Part detail

Revision	H
Type	AC
Mech. spec.	
Base	
Status	PRD/A
Elec. spec.	10WGY652
Layout	10LYF623
Eff. date	07-17-2023
CD Diagram	CD0180
Poles	02
Leads	9#8
Proprietary	False
Created date	08-15-2019

High Voltage Full Load Amps	45.0 a
Insulation Class	F
Inverter Code	Inverter Ready
IP Rating	IP55
KVA Code	H
Lifting Lugs	Standard Lifting Lugs
Locked Bearing Indicator	Locked Bearing
Max Speed	5400 rpm
Motor Lead Termination	Flying Leads
Motor Standards	NEMA
Motor Type	1058M
Mounting Arrangement	F1
Number of Poles	2
Overall Length	28.89 IN
Power Factor	90
Product Family	Washdown Features
Pulley Face Code	C-Face
Rodent Screen	None
Service Factor	1.00
Shaft Diameter	1.875 IN
Shaft Ground Indicator	No Shaft Grounding
Shaft Rotation	Reversible
Speed	3530 rpm
Speed Code	Single Speed
Starting Method	Direct on line
Thermal Device - Bearing	None
Thermal Device - Winding	None
Vibration Sensor Indicator	No Vibration Sensor
Winding Thermal 1	None
Winding Thermal 2	None

**Nameplate**

<b>NP1669</b>										
<b>CAT.NO.</b>	CEWDM4109T									
<b>SPEC.</b>	10-0000-1019									
<b>HP</b>	40									
<b>VOLTS</b>	230/460 10:1 CT/VT									
<b>AMP</b>	90/45									
<b>RPM</b>	3530									
<b>FRAME</b>	324TSC	<b>HZ</b>	60	<b>PH</b>	3					
<b>SER.F.</b>	1.00	<b>CODE</b>	H	<b>DES</b>	A	<b>CLASS</b>	F			
<b>NEMA-NOM-EFF</b>	92.4	<b>PF</b>	90							
<b>RATING</b>	40C AMB-CONT									
<b>CC</b>	010A	<b>USABLE AT 208V</b>						N/A		
<b>DE</b>	6312	<b>ODE</b>	6309							
<b>ENCL</b>	TEFC	<b>SN</b>								
<b>BLANK</b>	1.15SF ON SINEWAVE									

**AC Induction Motor Performance Data**

Record # 30898

Typical performance - not guaranteed values

Winding: 10WGY652-R001		Type: 1058M	Enclosure: TEFC	
<b>Nameplate Data</b>			<b>460 V, 60 Hz: High Voltage Connection</b>	
Rated Output (HP)	40	Full Load Torque	59.5 LB-FT	
Volts	230/460	Start Configuration	direct on line	
Full Load Amps	90/45	Breakdown Torque	197 LB-FT	
R.P.M.	3525	Pull-up Torque	85.4 LB-FT	
Hz	60 Phase	Locked-rotor Torque	125 LB-FT	
NEMA Design Code	B KVA Code	Starting Current	324 A	
Service Factor (S.F.)	1.15	No-load Current	12 A	
NEMA Nom. Eff.	92.4 Power Factor	Line-line Res. @ 25°C	0.14992 Ω	
Rating - Duty	40C AMB-CONT	Temp. Rise @ Rated Load	78°C	
S.F. Amps		Temp. Rise @ S.F. Load	97°C	
		Locked-rotor Power Factor	23	
		Rotor inertia	2.49 LB-FT <sup>2</sup>	

**Load Characteristics 460 V, 60 Hz, 40 HP**

% of Rated Load	25	50	75	100	125	150	S.F.
Power Factor	65	82	88	90	90	91	90
Efficiency	90.7	93.4	93.7	93.2	92.4	91.1	92.7
Speed	3583.2	3567.3	3549.7	3530.6	3511.2	3484.5	3519
Line amperes	16.3	24.7	34.3	45.1	56.3	70.6	51.8

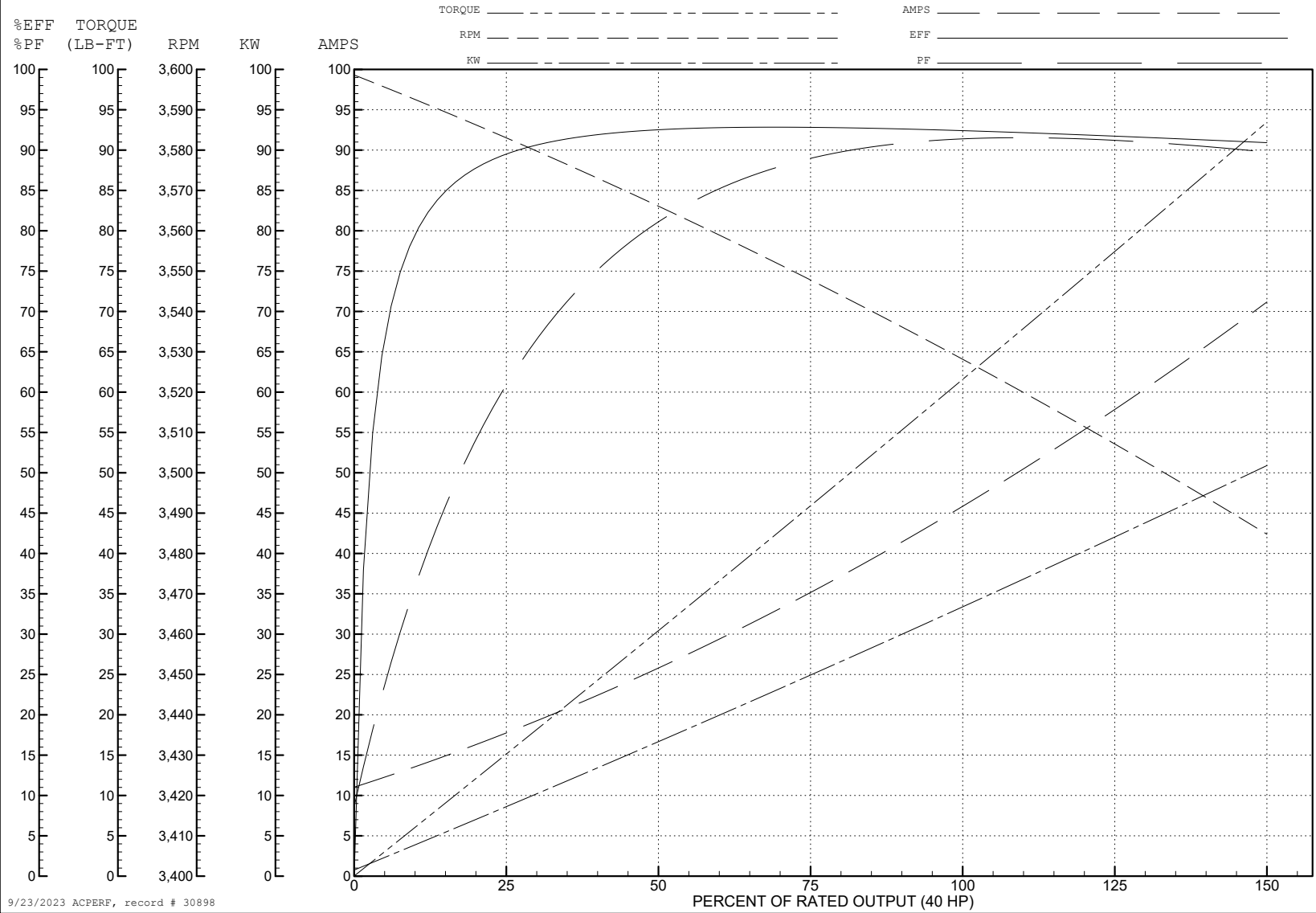
ABB Motors and Mechanical Inc.

WINDING # 10WGY652

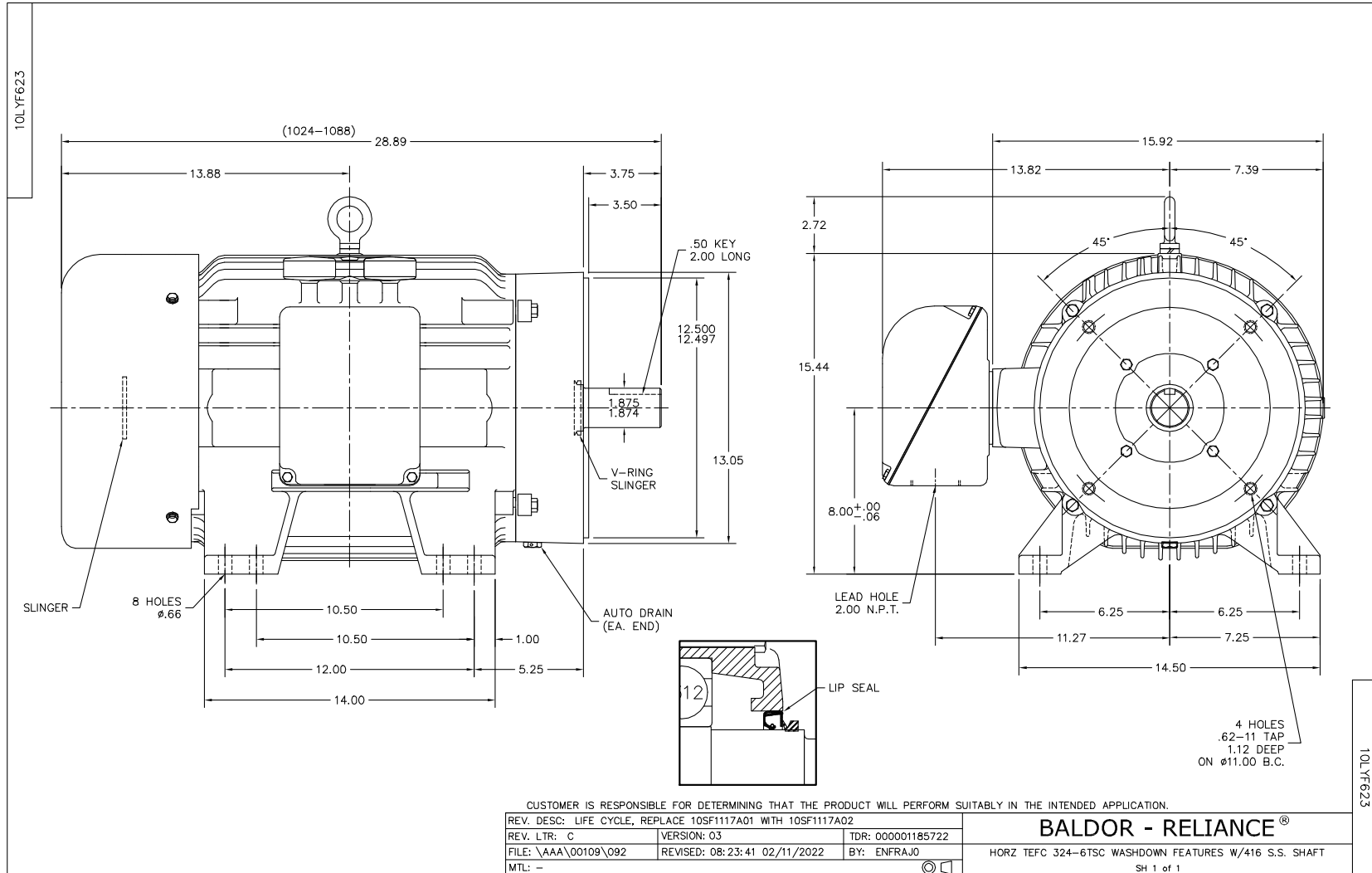
Typical performance - not guaranteed values.

40 HP 3 PH 60 HZ 3525 RPM 460 V 1058M

TORQUES (LB-FT): PO=197 PU=85.4 LR=125 LRA=324



9/23/2023 ACPERF, record # 30898



CD0180



LOW VOLTAGE  
(2D)



HIGH VOLTAGE  
(1D)



**NOTES:**

1. INTERCHANGE ANY TWO LINE LEADS TO REVERSE ROTATION.
2. OPTIONAL THERMOSTATS ARE PROVIDED WHEN SPECIFIED.
3. ACTUAL NUMBER OF INTERNAL PARALLEL CIRCUITS MAY BE A MULTIPLE OF THOSE SHOWN ABOVE.
4. LEAD COLORS ARE OPTIONAL. LEADS MUST ALWAYS BE NUMBERED AS SHOWN.

CD0180

REV. DESC: ADD CLASS CONN00000007		
REV. LTR: D	VERSION: 01	TDR: 000001099922
FILE: \AAA\00005\148	REVISED: 10: 25: 29 02/19/2019	BY: ENBRIRO
MTL: -	© □	

**BALDOR - RELIANCE®**

3PH, DV, 9 LEADS, DELTA CONNECTION

SH 1 of 1