

BALDOR • RELIANCE

Customer information packet

CEWDM3618T

1.5HP, 855RPM, 3PH, 60HZ, 184TC, TEFC, F1

Class - None

Division - Not Applicable

Copyright © All product information within this document is subject to ABB Motors and Mechanical Inc. copyright © protection, unless otherwise noted.

1/23/2025 6:29:21 PM

Specifications

Enclosure	TEFC
Frame	184TC
Frame Material	Steel
Frequency	60.00 Hz
Haz Area Class and Group	None
Haz Area Division	Not Applicable
Motor Letter Type	Three Phase
Output @ Frequency	1.500 HP @ 60 HZ
Phase	3
Synchronous Speed @ Frequency	900 RPM @ 60 HZ
Voltage @ Frequency	230.0 V @ 60 HZ 460.0 V @ 60 HZ
Agency Approvals	CSA CSA EEV NEMA PREMIUM UR
Ambient Temperature	40 °C
Auxillary Box	No Auxillary Box
Auxillary Box Lead Termination	None
Base Indicator	Rigid
Bearing Grease Type	Polyrex EM (-20F +300F)
Blower	None
Current @ Voltage	3.000 A @ 460.0 V 6.000 A @ 230.0 V
Design Code	B
Drip Cover	No Drip Cover
Duty Rating	CONT
Efficiency @ 100% Load	78.5 %
Electrically Isolated Bearing	Not Electrically Isolated
Feedback Device	NO FEEDBACK
Heater Indicator	No Heater
High Voltage Full Load Amps	3.0 a

Part detail

Revision	B
Type	AC
Mech. spec.	
Base	
Status	PRD/A
Elec. spec.	36WGN164
Layout	36LYK190
Eff. date	02-14-2024
CD Diagram	CD0005
Poles	08
Leads	9#16
Proprietary	False
Created date	01-14-2020

Insulation Class	F
Inverter Code	Inverter Ready
KVA Code	K
Lifting Lugs	Standard Lifting Lugs
Locked Bearing Indicator	Locked Bearing
Motor Lead Termination	Flying Leads
Motor Standards	NEMA
Motor Type	3646M
Mounting Arrangement	F1
Number of Poles	8
Overall Length	18.04 IN
Power Factor	61
Product Family	Wash Down
Pulley Face Code	C-Face
Rodent Screen	None
Service Factor	1.15
Shaft Diameter	1.125 IN
Shaft Ground Indicator	No Shaft Grounding
Shaft Rotation	Reversible
Speed	855 rpm
Speed Code	Single Speed
Starting Method	Direct on line
Thermal Device - Bearing	None
Thermal Device - Winding	None
Vibration Sensor Indicator	No Vibration Sensor
Winding Thermal 1	None
Winding Thermal 2	None

Nameplate

NP1669L									
CAT.NO.	CEWDM3618T								
SPEC.	36-0000-0259								
HP	1.5								
VOLTS	230/460								
AMP	6/3								
RPM	855								
FRAME	184TC		HZ	60		PH	3		
SER.F.	1.15	CODE	K	DES	B	CLASS	F		
NEMA-NOM-EFF	78.5	PF	61						
RATING	40C AMB-CONT								
CC	010A								
DE	6206		ODE	6205					
ENCL	TEFC	SN							
BLANK	10:1CT, 10:1VT, 1.00SF								

AC Induction Motor Performance Data

Record # 78116

Typical performance - not guaranteed values

Winding: 36WGN164-R005		Type: 3646M	Enclosure: TEFC	
Nameplate Data			460 V, 60 Hz: High Voltage Connection	
Rated Output (HP)	1.5	Full Load Torque	9.31 LB-FT	
Volts	230/460	Start Configuration	direct on line	
Full Load Amps	6/3	Breakdown Torque	31.1 LB-FT	
R.P.M.	855	Pull-up Torque	23.1 LB-FT	
Hz	60 Phase	3	Locked-rotor Torque	29.5 LB-FT
NEMA Design Code	B KVA Code	K	Starting Current	15 A
Service Factor (S.F.)	1.15	No-load Current	2.11 A	
NEMA Nom. Eff.	78.5 Power Factor	61	Line-line Res. @ 25°C	8.44 Ω
Rating - Duty	40C AMB-CONT	Temp. Rise @ Rated Load	61°C	
S.F. Amps		Temp. Rise @ S.F. Load	72°C	
		Locked-rotor Power Factor	42.7	
		Rotor inertia	0.431 LB-FT ²	

Load Characteristics 460 V, 60 Hz, 1.5 HP

% of Rated Load	25	50	75	100	125	150	S.F.
Power Factor	26	41	52	61	68	72	65
Efficiency	66.6	76.5	78.9	78.6	76.9	74.2	77.6
Speed	889	879	868	855	840	822	846
Line amperes	2.15	2.34	2.6	2.95	3.41	3.95	3.23

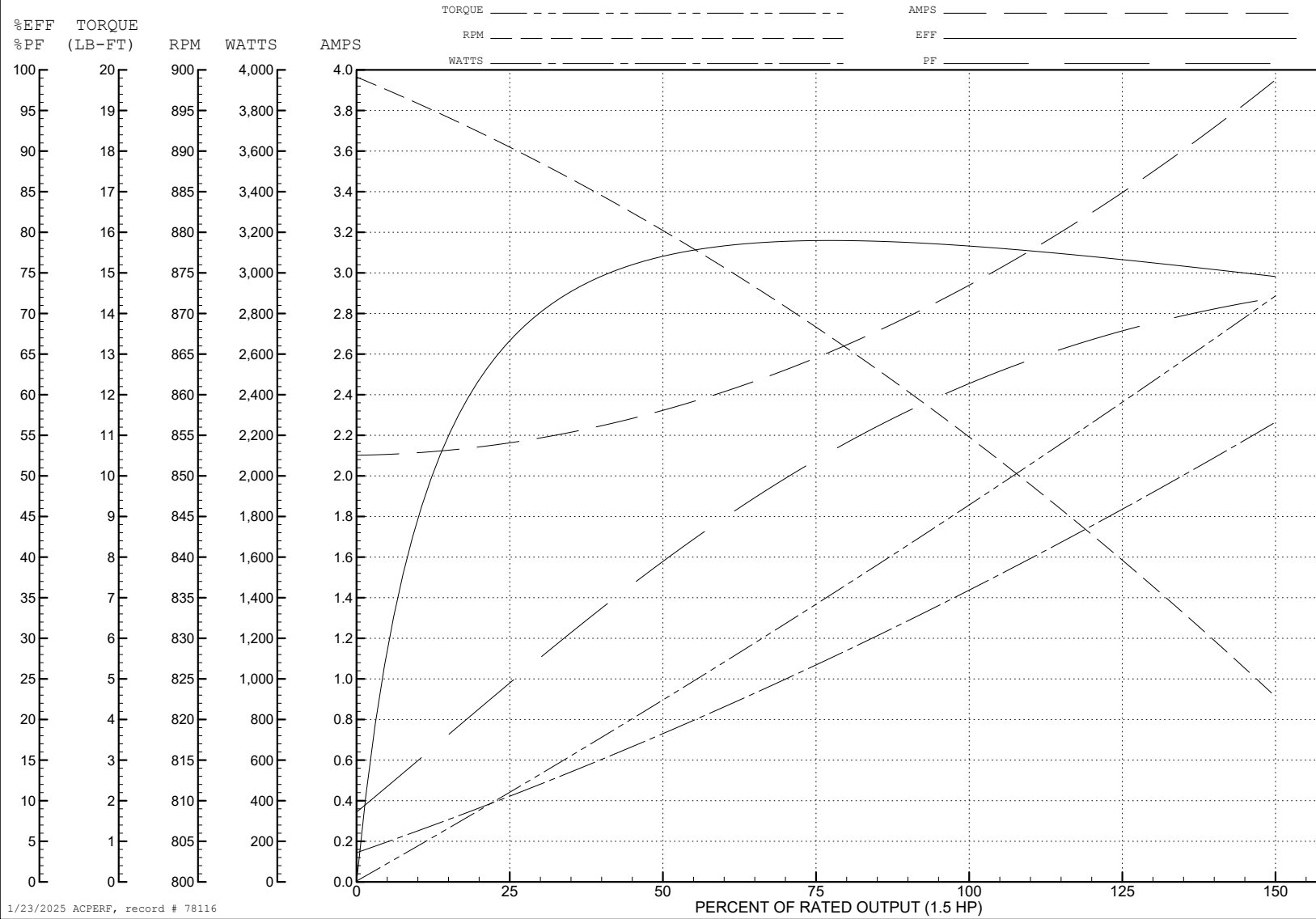
ABB Motors and Mechanical Inc.

WINDING # 36WGN164

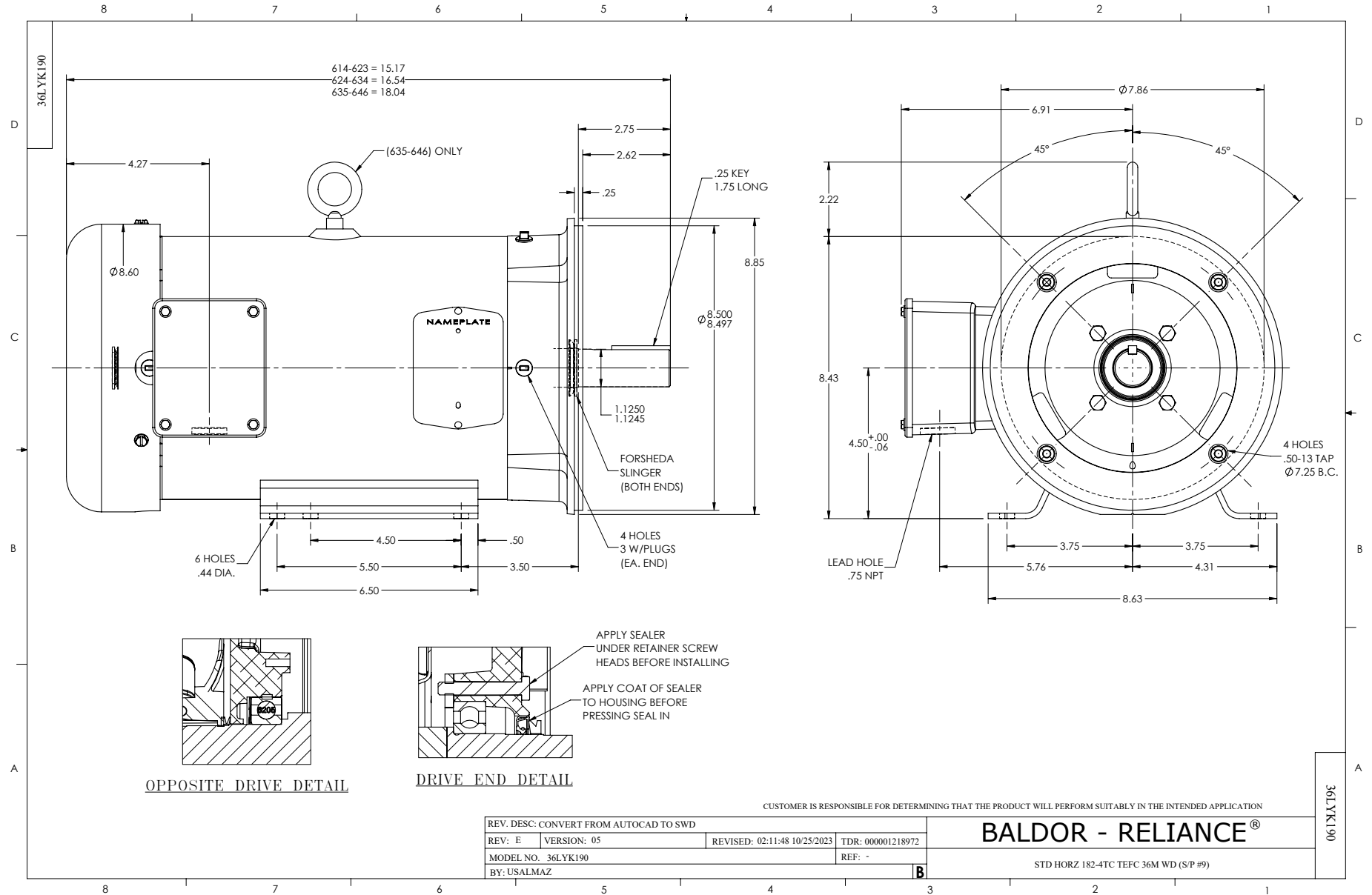
1.5 HP 3 PH 60 HZ 855 RPM 460 V 3646M

Typical performance - not guaranteed values.

TORQUES (LB-FT): PO=31.1 PU=23.1 LR=29.5 LRA=15



1/23/2025 ACPERF, record # 78116



CD0005



LOW VOLTAGE
(2Y)



LINE

HIGH VOLTAGE
(1Y)



LINE

NOTES:

1. INTERCHANGE ANY TWO LINE LEADS TO REVERSE ROTATION.
2. OPTIONAL THERMOSTATS ARE PROVIDED WHEN SPECIFIED.
3. ACTUAL NUMBER OF INTERNAL PARALLEL CIRCUITS MAY BE A MULTIPLE OF THOSE SHOWN ABOVE.
4. LEAD COLORS ARE OPTIONAL. LEADS MUST ALWAYS BE NUMBERED AS SHOWN.

CD0005

REV. DESC: REVISE TO SHOW OPTIONAL COLORS			
REV. LTR: E	BY: JLP	REVISED: 01/19/99 10:15	TDR: 0171435
S00000		FILE: AAA00005140	MDL: -
		MTL: -	

BALDOR ELECTRIC Co.

3PH, DV, 9 LEADS