

**BALDOR • RELIANCE**

---

# Customer information packet

## CEWDM23994T

15HP, 3500RPM, 3PH, 60HZ, 254TC, 3752M, TEFC, F

Class - None

Division - Not Applicable

## Specifications

Enclosure	TEFC
Frame	254TC
Frame Material	Steel
Frequency	60.00 Hz
Haz Area Class and Group	None
Haz Area Division	Not Applicable
Motor Letter Type	Three Phase
Output @ Frequency	15.000 HP @ 60 HZ
Phase	3
Synchronous Speed @ Frequency	3600 RPM @ 60 HZ
Voltage @ Frequency	460.0 V @ 60 HZ 230.0 V @ 60 HZ
Agency Approvals	CSA CSA EEV UR
Ambient Temperature	40 °C
Auxillary Box	No Auxillary Box
Auxillary Box Lead Termination	None
Base Indicator	Rigid
Bearing Grease Type	Polyrex EM (-20F +300F)
Blower	None
Current @ Voltage	33.200 A @ 230.0 V 36.400 A @ 208.0 V 16.600 A @ 460.0 V
Design Code	A
Drip Cover	No Drip Cover
Duty Rating	CONT
Efficiency @ 100% Load	91.0 %
Electrically Isolated Bearing	Not Electrically Isolated
Feedback Device	NO FEEDBACK
Front Face Code	Standard
Front Shaft Indicator	None

## Part detail

Revision	AD
Type	AC
Mech. spec.	37H882
Base	
Status	PRD/A
Elec. spec.	37WGT381
Layout	37LYH882
Eff. date	02-14-2024
CD Diagram	CD0005
Poles	02
Leads	9#12
Proprietary	False
Created date	01-01-0001

Heater Indicator	No Heater
High Voltage Full Load Amps	16.6 a
Insulation Class	F
Inverter Code	Inverter Ready
KVA Code	K
Lifting Lugs	Standard Lifting Lugs
Locked Bearing Indicator	Locked Bearing
Motor Lead Exit	Ko Box
Motor Lead Quantity/Wire Size	9 @ 12 AWG
Motor Lead Termination	Flying Leads
Motor Standards	NEMA
Motor Type	3752M
Mounting Arrangement	F1
Number of Poles	2
Overall Length	21.89 IN
Power Factor	90
Product Family	Wash Down
Pulley End Bearing Type	Sealed Bearing
Pulley Face Code	C-Face
Pulley Shaft Indicator	Standard
Rodent Screen	None
Service Factor	1.15
Shaft Diameter	1.625 IN
Shaft Extension Location	Pulley End
Shaft Ground Indicator	No Shaft Grounding
Shaft Rotation	Reversible
Shaft Slinger Indicator	Shaft Slinger
Speed	3500 rpm
Speed Code	Single Speed
Starting Method	Direct on line
Thermal Device - Bearing	None
Thermal Device - Winding	None
Vibration Sensor Indicator	No Vibration Sensor
Winding Thermal 1	None

**Winding Thermal 2**

**None**

---

**Nameplate**

<b>NP1669L</b>									
<b>CAT.NO.</b>	CEWDM23994T								
<b>SPEC.</b>	37H882T381G1								
<b>HP</b>	15								
<b>VOLTS</b>	230/460								
<b>AMP</b>	33.2/16.6								
<b>RPM</b>	3500								
<b>FRAME</b>	254TC		<b>HZ</b>	60		<b>PH</b>	3		
<b>SER.F.</b>	1.15	<b>CODE</b>	K	<b>DES</b>	A	<b>CLASS</b>	F		
<b>NEMA-NOM-EFF</b>	91	<b>PF</b>	90						
<b>RATING</b>	40C AMB-CONT								
<b>CC</b>	010A								
<b>DE</b>	6309		<b>ODE</b>	6206					
<b>ENCL</b>	TEFC	<b>SN</b>							
<b>BLANK</b>	20:1CT, 20:1VT								

**AC Induction Motor Performance Data**

Record # 33531

Typical performance - not guaranteed values

<b>Winding: 37WGT381-R001</b>		<b>Type: 3752M</b>		<b>Enclosure: TEFC</b>	
<b>Nameplate Data</b>			<b>460 V, 60 Hz: High Voltage Connection</b>		
<b>Rated Output (HP)</b>	15		<b>Full Load Torque</b>	22.5 LB-FT	
<b>Volts</b>	230/460		<b>Start Configuration</b>	direct on line	
<b>Full Load Amps</b>	33.2/16.6		<b>Breakdown Torque</b>	104 LB-FT	
<b>R.P.M.</b>	3500		<b>Pull-up Torque</b>	56.8 LB-FT	
<b>Hz</b>	<b>60 Phase</b>	<b>3</b>	<b>Locked-rotor Torque</b>	63.6 LB-FT	
<b>NEMA Design Code</b>	<b>A KVA Code</b>	<b>K</b>	<b>Starting Current</b>	161 A	
<b>Service Factor (S.F.)</b>	1.15		<b>No-load Current</b>	4.43 A	
<b>NEMA Nom. Eff.</b>	<b>91 Power Factor</b>	<b>90</b>	<b>Line-line Res. @ 25°C</b>	0.51091 Ω	
<b>Rating - Duty</b>	40C AMB-CONT		<b>Temp. Rise @ Rated Load</b>	70°C	
<b>S.F. Amps</b>			<b>Temp. Rise @ S.F. Load</b>	87°C	
			<b>Locked-rotor Power Factor</b>	31	
			<b>Rotor inertia</b>	0.475 LB-FT <sup>2</sup>	

**Load Characteristics 460 V, 60 Hz, 15 HP**

<b>% of Rated Load</b>	<b>25</b>	<b>50</b>	<b>75</b>	<b>100</b>	<b>125</b>	<b>150</b>	<b>S.F.</b>
<b>Power Factor</b>	69	87	92	93	94	94	94
<b>Efficiency</b>	88.8	92	92.1	91.5	90.4	89	90.8
<b>Speed</b>	3573.5	3549.1	3521.8	3495.3	3464.8	3432.8	3477
<b>Line amperes</b>	5.91	8.94	12.6	16.5	20.6	25	19

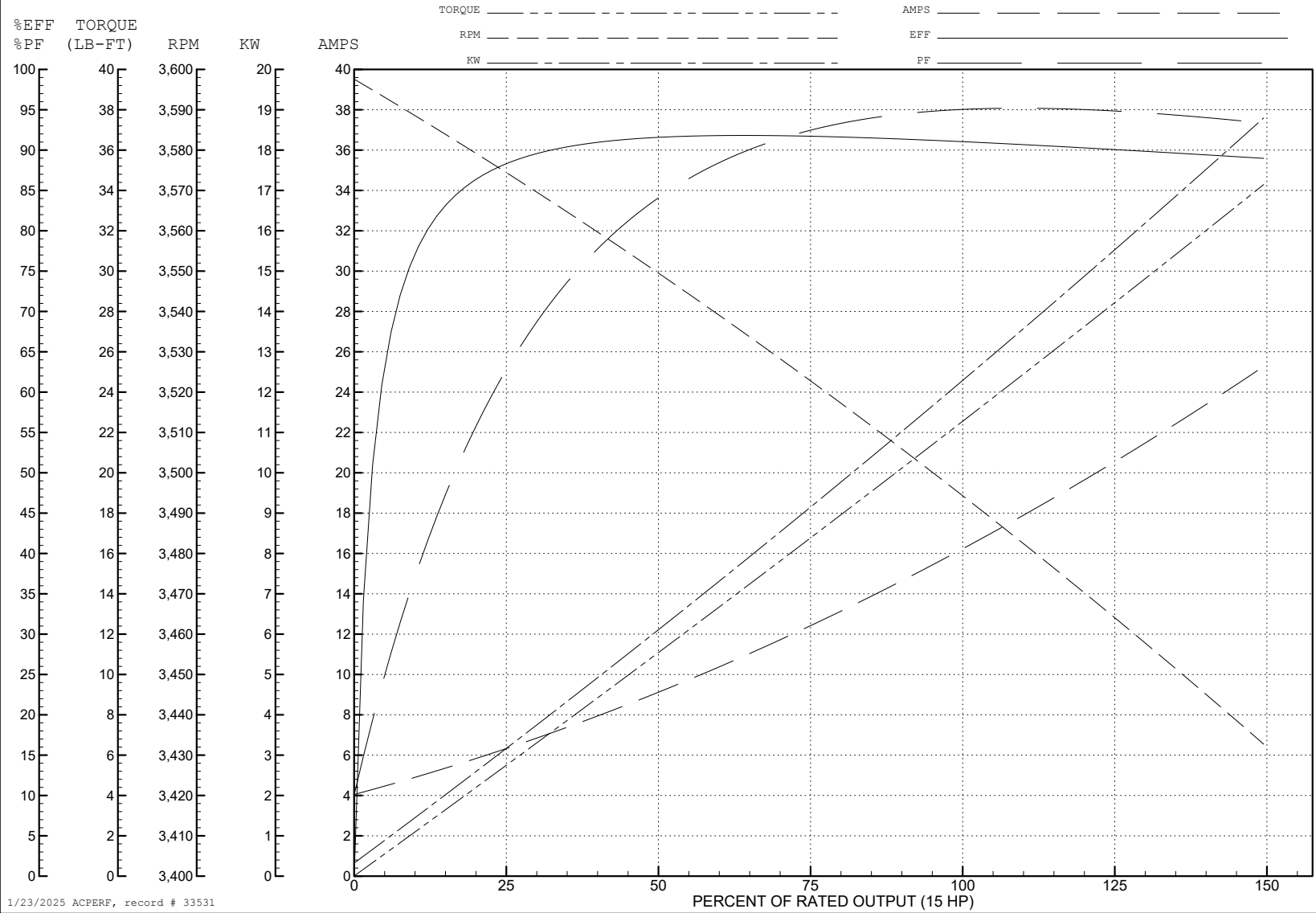
ABB Motors and Mechanical Inc.

WINDING # 37WGT381

Typical performance - not guaranteed values.

15 HP 3 PH 60 HZ 3500 RPM 460 V 3752M

TORQUES (LB-FT): PO=104 PU=56.8 LR=63.6 LRA=161



1/23/2025 ACPERF, record # 33531

**AC Induction Motor Performance Data**

Record # 35776

Typical performance - not guaranteed values

Winding: 37WGT381-R007		Type: 3752M		Enclosure: TEFC	
<b>Nameplate Data</b>			<b>460 V, 60 Hz: High Voltage Connection</b>		
Rated Output (HP)	15	Full Load Torque	22.5 LB-FT		
Volts	230/460	Start Configuration	direct on line		
Full Load Amps	33.2/16.6	Breakdown Torque	104 LB-FT		
R.P.M.	3500	Pull-up Torque	56.8 LB-FT		
Hz	60	Phase	3	Locked-rotor Torque	63.6 LB-FT
NEMA Design Code	A	KVA Code	K	Starting Current	161 A
Service Factor (S.F.)	1.15	No-load Current	4.43 A		
NEMA Nom. Eff.	91	Power Factor	90	Line-line Res. @ 25°C	0.479 Ω
Rating - Duty	40C AMB-CONT		Temp. Rise @ Rated Load	70°C	
S.F. Amps			Temp. Rise @ S.F. Load	87°C	
			Locked-rotor Power Factor	31	
			Rotor inertia	0.475 LB-FT <sup>2</sup>	

**Load Characteristics 460 V, 60 Hz, 15 HP**

% of Rated Load	25	50	75	100	125	150	S.F.
Power Factor	69	87	92	93	94	94	94
Efficiency	88.3	91.5	91.8	91.2	90.1	89	90.5
Speed	3574	3549	3522	3495	3465	3433	3477
Line amperes	5.91	8.94	12.6	16.5	20.6	25	19



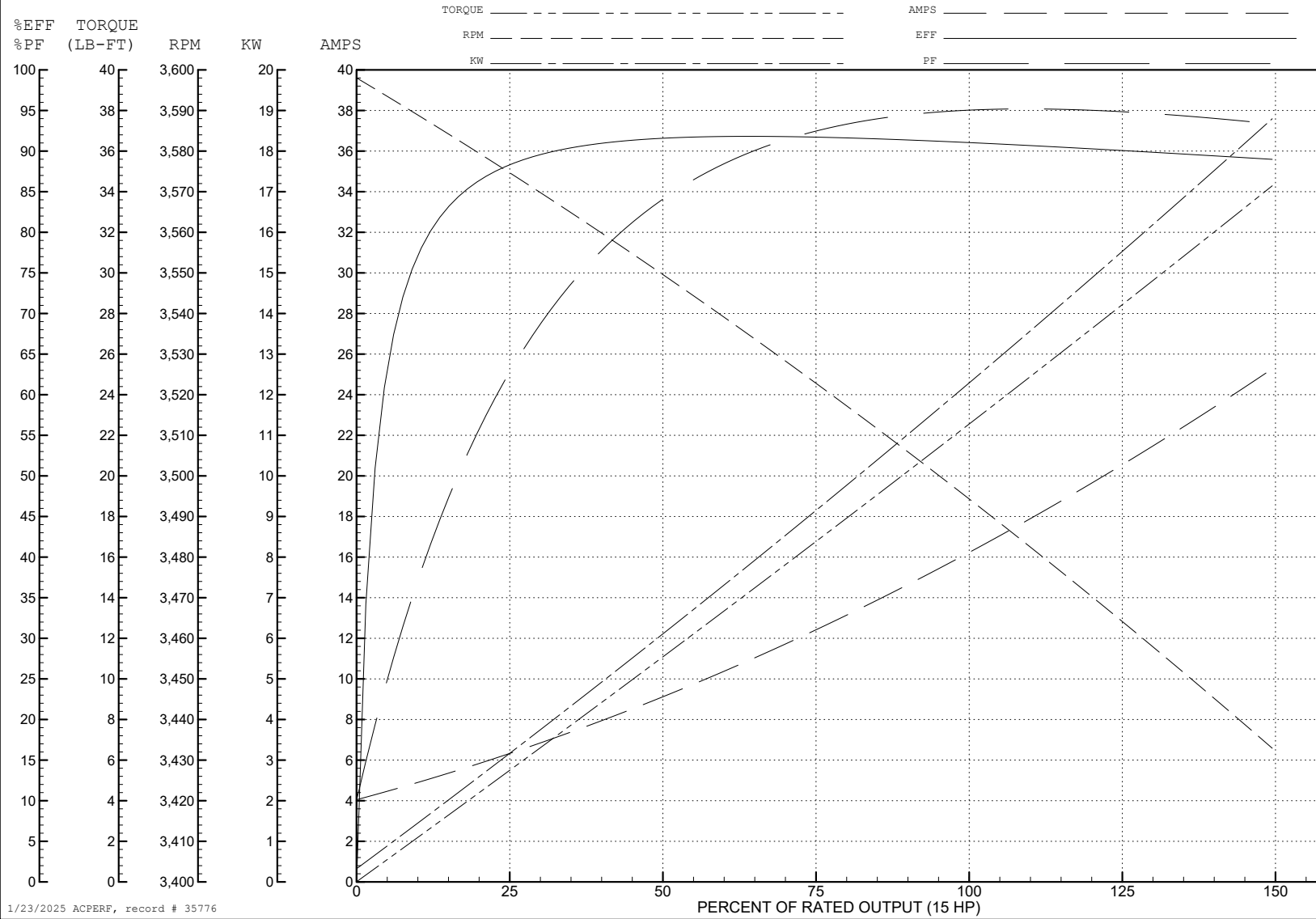
ABB Motors and Mechanical Inc.

WINDING # 37WGT381

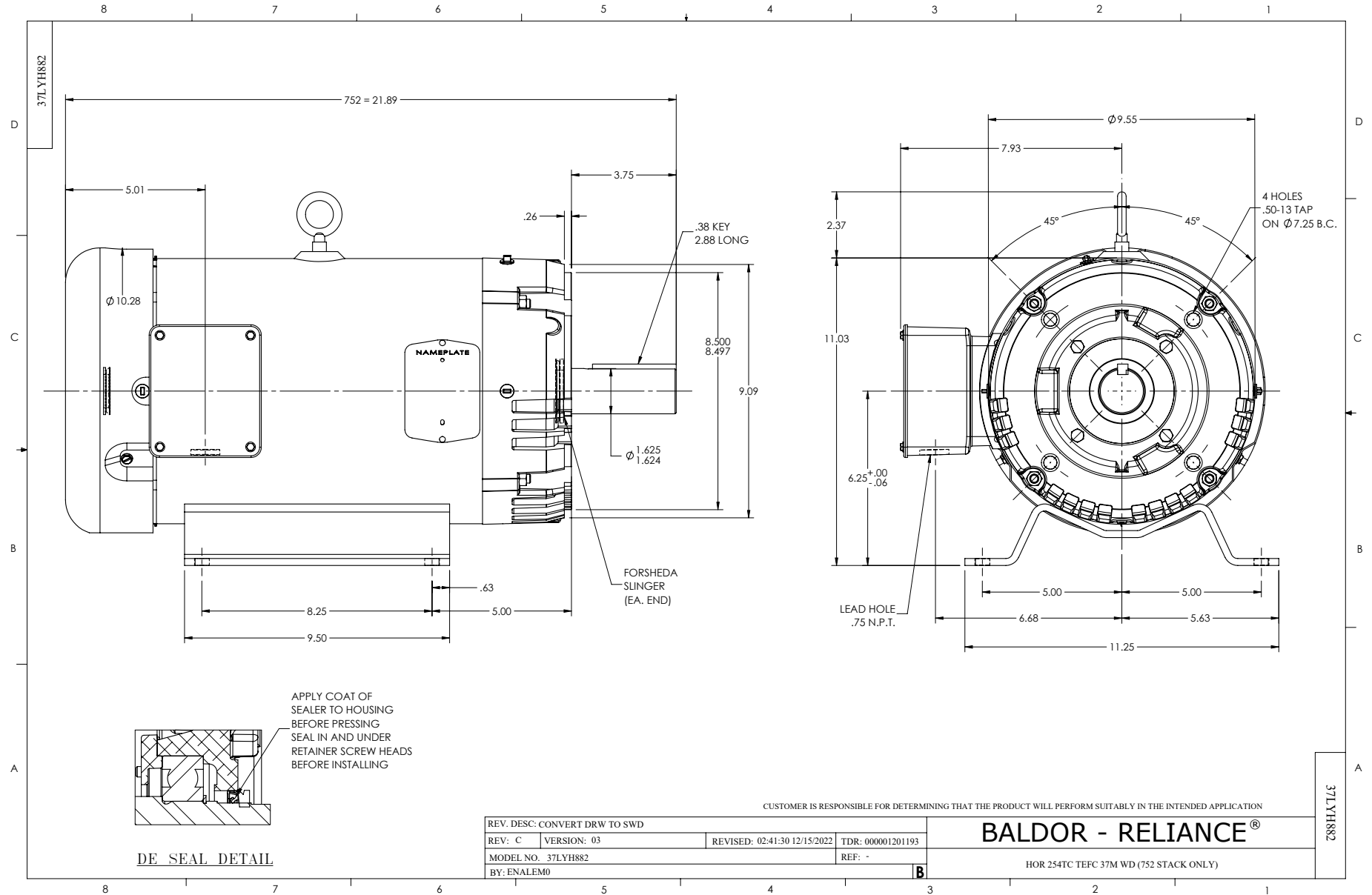
15 HP 3 PH 60 HZ 3500 RPM 460 V 3752M

Typical performance - not guaranteed values.

TORQUES (LB-FT): PO=104 PU=56.8 LR=63.6 LRA=161



1/23/2025 ACPERF, record # 35776



CD0005



LOW VOLTAGE  
(2Y)



LINE

HIGH VOLTAGE  
(1Y)



LINE

NOTES:

1. INTERCHANGE ANY TWO LINE LEADS TO REVERSE ROTATION.
2. OPTIONAL THERMOSTATS ARE PROVIDED WHEN SPECIFIED.
3. ACTUAL NUMBER OF INTERNAL PARALLEL CIRCUITS MAY BE A MULTIPLE OF THOSE SHOWN ABOVE.
4. LEAD COLORS ARE OPTIONAL. LEADS MUST ALWAYS BE NUMBERED AS SHOWN.

CD0005

REV. DESC: REVISE TO SHOW OPTIONAL COLORS			
REV. LTR: E	BY: JLP	REVISED: 01/19/99 10:15	TDR: 0171435
S00000		FILE: AAA00005140	MDL: -
		MTL: -	

**BALDOR ELECTRIC Co.**

3PH, DV, 9 LEADS