

BALDOR • RELIANCE

Customer information packet

CEWDM23934T-5

20HP, 1765RPM, 3PH, 60HZ, 256TC, 3952M, TEFC, F

Class -

Division - Not Applicable

Specifications

Enclosure	TEFC
Frame	256TC
Frame Material	Steel
Frequency	60.00 Hz
Haz Area Division	Not Applicable
Motor Letter Type	Three Phase
Output @ Frequency	20.000 HP @ 60 HZ
Phase	3
Synchronous Speed @ Frequency	1800 RPM @ 60 HZ
Voltage @ Frequency	575.0 V @ 60 HZ
Agency Approvals	CSA CSA EEV UR
Ambient Temperature	40 °C
Auxillary Box	No Auxillary Box
Auxillary Box Lead Termination	None
Base Indicator	Rigid
Bearing Grease Type	Polyrex EM (-20F +300F)
Blower	None
Current @ Voltage	19.000 A @ 575.0 V
Design Code	B
Drip Cover	No Drip Cover
Duty Rating	CONT
Efficiency @ 100% Load	93.0 %
Electrically Isolated Bearing	Not Electrically Isolated
Feedback Device	NO FEEDBACK
Front Face Code	Standard
Front Shaft Indicator	None
Heater Indicator	No Heater
High Voltage Full Load Amps	19.0 a
Insulation Class	F
Inverter Code	Inverter Ready

Part detail

Revision	BB
Type	AC
Mech. spec.	39R098
Base	
Status	PRD/A
Elec. spec.	39WGX438
Layout	39LYR098
Eff. date	02-21-2024
CD Diagram	CD0006
Poles	04
Leads	3#12
Proprietary	False
Created date	01-01-0001

KVA Code	H
Lifting Lugs	Standard Lifting Lugs
Locked Bearing Indicator	Locked Bearing
Motor Lead Exit	Ko Box
Motor Lead Quantity/Wire Size	3 @ 12 AWG
Motor Lead Termination	Flying Leads
Motor Standards	NEMA
Motor Type	3952M
Mounting Arrangement	F1
Number of Poles	4
Overall Length	23.57 IN
Power Factor	84
Product Family	Wash Down
Pulley End Bearing Type	Sealed Bearing
Pulley Face Code	C-Face
Pulley Shaft Indicator	Standard
Rodent Screen	None
Service Factor	1.15
Shaft Diameter	1.625 IN
Shaft Extension Location	Pulley End
Shaft Ground Indicator	No Shaft Grounding
Shaft Rotation	Reversible
Shaft Slinger Indicator	Shaft Slinger
Speed	1765 rpm
Speed Code	Single Speed
Starting Method	Direct on line
Thermal Device - Bearing	None
Thermal Device - Winding	None
Vibration Sensor Indicator	No Vibration Sensor

Nameplate

NP1669L									
CAT.NO.	CEWDM23934T-5								
SPEC.	39R098X438G1								
HP	20								
VOLTS	575								
AMP	19								
RPM	1765								
FRAME	256TC		HZ	60		PH	3		
SER.F.	1.15	CODE	H	DES	A	CLASS	F		
NEMA-NOM-EFF	91	PF	84						
RATING	40C AMB-CONT								
CC	010A								
DE	6309		ODE	6208					
ENCL	TEFC	SN							
BLANK									

AC Induction Motor Performance Data

Record # 25746

Typical performance - not guaranteed values

Winding: 39WGX438-R001		Type: 3952M		Enclosure: TEFC	
Nameplate Data			575 V, 60 Hz: Single Voltage Motor		
Rated Output (HP)	20	Full Load Torque	60 LB-FT		
Volts	575	Start Configuration	direct on line		
Full Load Amps	19	Breakdown Torque	189 LB-FT		
R.P.M.	1765	Pull-up Torque	77.4 LB-FT		
Hz	60	Phase	3	Locked-rotor Torque	118 LB-FT
NEMA Design Code	A	KVA Code	H	Starting Current	134 A
Service Factor (S.F.)	1.15	No-load Current	6.62 A		
NEMA Nom. Eff.	91	Power Factor	84	Line-line Res. @ 25°C	0.668 Ω
Rating - Duty	40C AMB-CONT		Temp. Rise @ Rated Load	71°C	
S.F. Amps			Temp. Rise @ S.F. Load	87°C	
			Locked-rotor Power Factor	32.7	
			Rotor inertia	2.27 lb-ft ²	

Load Characteristics 575 V, 60 Hz, 20 HP

% of Rated Load	25	50	75	100	125	150	S.F.
Power Factor	54	75	83	85	89	89	87
Efficiency	89.7	93	93.5	93.2	92.4	91.4	92.7
Speed	1791	1784	1776	1767	1757	1747	1761
Line amperes	7.97	10.9	14.6	19	23	27.7	21.4

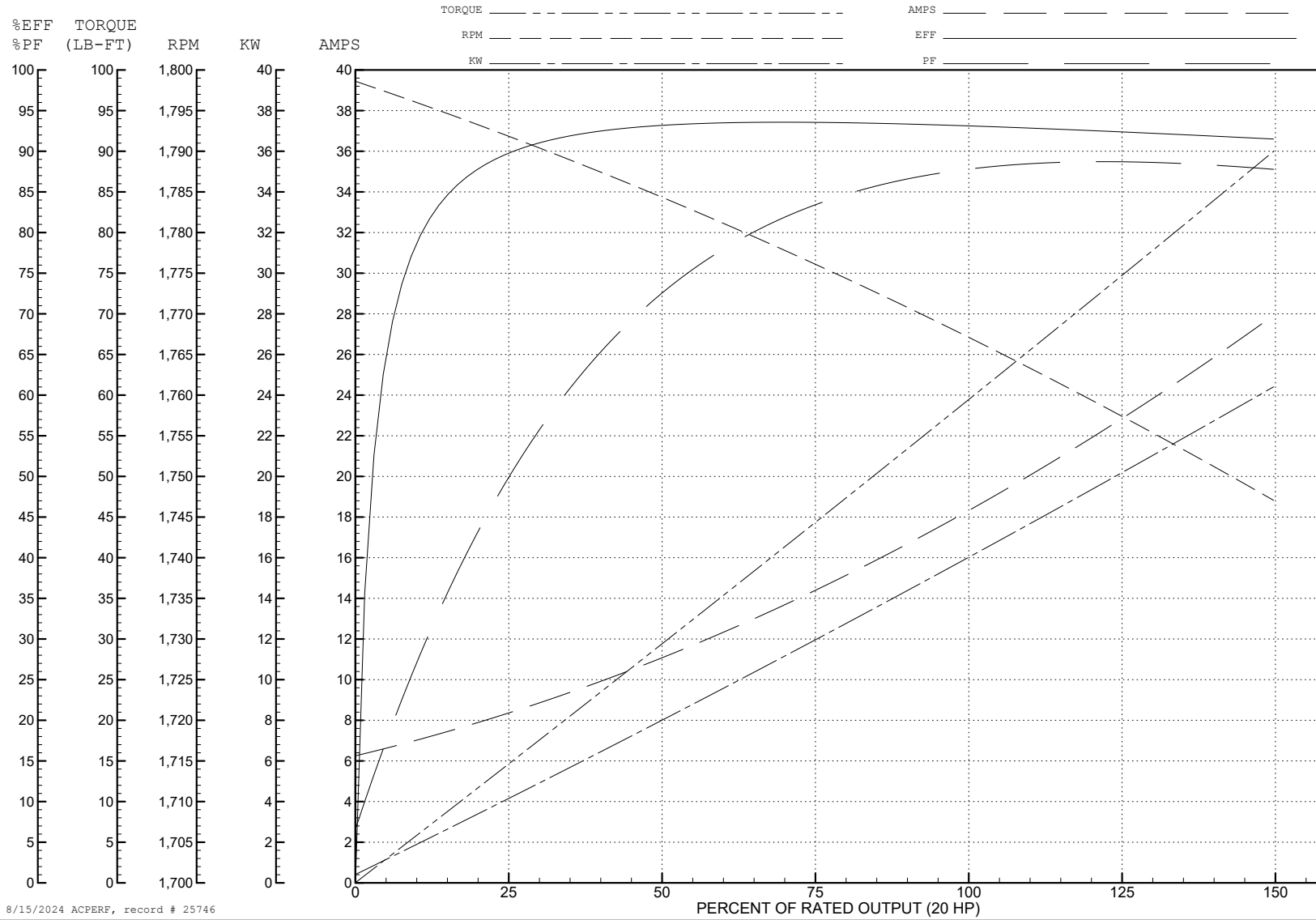
ABB Motors and Mechanical Inc.

WINDING # 39WGX438

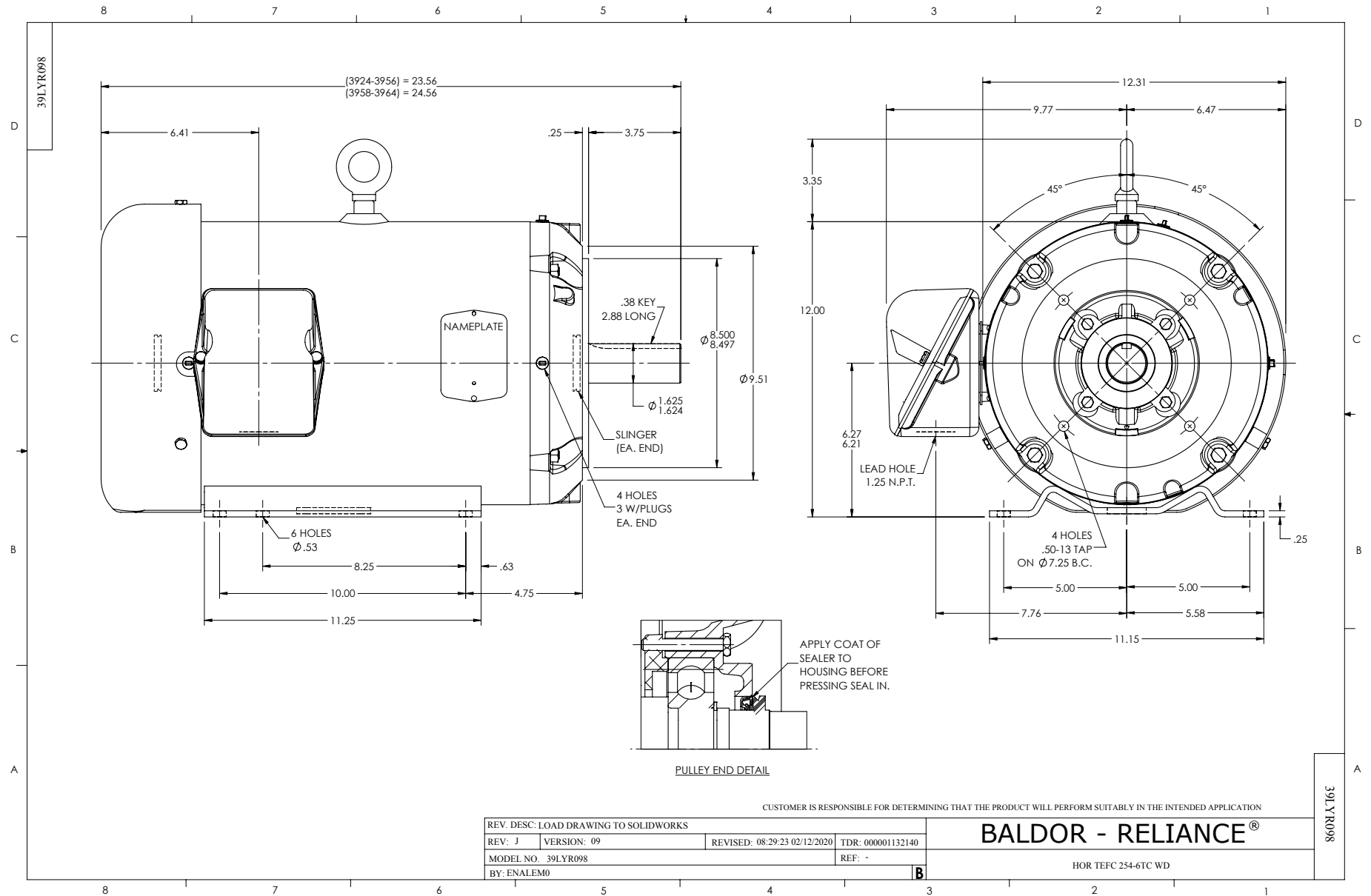
Typical performance - not guaranteed values.

20 HP 3 PH 60 HZ 1765 RPM 575 V 3952M

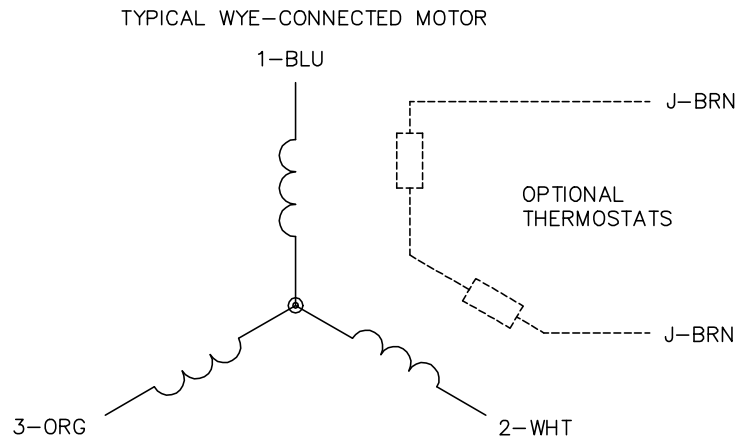
TORQUES (LB-FT): PO=189 PU=77.4 LR=118 LRA=134



8/15/2024 ACPERF, record # 25746



CD0006



NOTES:

1. THREE LEAD MOTOR MAY BE EITHER WYE CONNECTED OR DELTA CONNECTED.
2. INTERCHANGE ANY TWO LINE LEADS TO REVERSE ROTATION.
3. OPTIONAL THERMOSTATS ARE PROVIDED WHEN SPECIFIED.
4. ACTUAL NUMBER OF INTERNAL PARALLEL CIRCUITS MAY VARY.
5. LEAD COLORS ARE OPTIONAL. LEADS MUST BE NUMBERED AS SHOWN.

CD0006

REV. DESC: ADD CLASS CONN00000007		
REV. LTR: E	VERSION: 01	TDR: 000001099922
FILE: \AAA\00005\141	REVISED: 10:24:49 02/19/2019	BY: ENBRIRO
MTL: -	© □	

BALDOR - RELIANCE®

3PH, SV, 3 LEADS, WYE OR DELTA CONNECTED

SH 1 of 1