

BALDOR • RELIANCE

Customer information packet

CEWDM23933T

15HP, 1765RPM, 3PH, 60HZ, 254TC, 3942M, TEFC, F

Class -

Division - Not Applicable

Specifications

Enclosure	TEFC
Frame	254TC
Frame Material	Steel
Frequency	60.00 Hz
Haz Area Division	Not Applicable
Motor Letter Type	Three Phase
Output @ Frequency	15.000 HP @ 60 HZ
Phase	3
Synchronous Speed @ Frequency	1800 RPM @ 60 HZ
Voltage @ Frequency	230.0 V @ 60 HZ 460.0 V @ 60 HZ
Agency Approvals	CSA UR CSA EEV
Ambient Temperature	40 °C
Auxillary Box	No Auxillary Box
Auxillary Box Lead Termination	None
Base Indicator	Rigid
Bearing Grease Type	Polyrex EM (-20F +300F)
Blower	None
Current @ Voltage	36.000 A @ 230.0 V 36.000 A @ 208.0 V 18.000 A @ 460.0 V
Design Code	A
Drip Cover	No Drip Cover
Duty Rating	CONT
Efficiency @ 100% Load	92.4 %
Electrically Isolated Bearing	Not Electrically Isolated
Feedback Device	NO FEEDBACK
Front Face Code	Standard
Front Shaft Indicator	None
Heater Indicator	No Heater

Part detail

Revision	BD
Type	AC
Mech. spec.	39R098
Base	
Status	PRD/A
Elec. spec.	39WGW595
Layout	39LYR098
Eff. date	02-14-2024
CD Diagram	CD0005
Poles	04
Leads	9#12
Proprietary	False
Created date	01-01-0001

High Voltage Full Load Amps	18.0 a
Insulation Class	F
Inverter Code	Inverter Ready
KVA Code	H
Lifting Lugs	Standard Lifting Lugs
Locked Bearing Indicator	Locked Bearing
Motor Lead Exit	Ko Box
Motor Lead Quantity/Wire Size	9 @ 12 AWG
Motor Lead Termination	Flying Leads
Motor Standards	NEMA
Motor Type	3942M
Mounting Arrangement	F1
Number of Poles	4
Overall Length	23.57 IN
Power Factor	84
Product Family	Wash Down
Pulley End Bearing Type	Sealed Bearing
Pulley Face Code	C-Face
Pulley Shaft Indicator	Standard
Rodent Screen	None
Service Factor	1.15
Shaft Diameter	1.625 IN
Shaft Extension Location	Pulley End
Shaft Ground Indicator	No Shaft Grounding
Shaft Rotation	Reversible
Shaft Slinger Indicator	Shaft Slinger
Speed	1765 rpm
Speed Code	Single Speed
Starting Method	Direct on line
Thermal Device - Bearing	None
Thermal Device - Winding	None
Vibration Sensor Indicator	No Vibration Sensor

Nameplate

NP1669L									
CAT.NO.	CEWDM23933T								
SPEC.	39R098W595G1								
HP	15								
VOLTS	230/460								
AMP	36/18								
RPM	1765								
FRAME	254TC		HZ	60		PH	3		
SER.F.	1.15	CODE	H	DES	A	CLASS	F		
NEMA-NOM-EFF	92.4	PF	84						
RATING	40C AMB-CONT								
CC	010A								
DE	6309		ODE	6208					
ENCL	TEFC	SN							
BLANK	20:1 CT 20:1 VT								

AC Induction Motor Performance Data

Record # 12820

Typical performance - not guaranteed values

Winding: 39WGW595-R001		Type: 3942M		Enclosure: TEFC	
Nameplate Data			460 V, 60 Hz: High Voltage Connection		
Rated Output (HP)	15		Full Load Torque	45 LB-FT	
Volts	230/460		Start Configuration	direct on line	
Full Load Amps	36/18		Breakdown Torque	143 LB-FT	
R.P.M.	1765		Pull-up Torque	75 LB-FT	
Hz	60 Phase	3	Locked-rotor Torque	88 LB-FT	
NEMA Design Code	B KVA Code	H	Starting Current	125 A	
Service Factor (S.F.)	1.15		No-load Current	6.95 A	
NEMA Nom. Eff.	92.4 Power Factor	84	Line-line Res. @ 25°C	0.577 Ω	
Rating - Duty	40C AMB-CONT		Temp. Rise @ Rated Load	60°C	
S.F. Amps			Temp. Rise @ S.F. Load	72°C	
			Locked-rotor Power Factor	33.3	
			Rotor inertia	1.84 lb-ft ²	

Load Characteristics 460 V, 60 Hz, 15 HP

% of Rated Load	25	50	75	100	125	150	S.F.
Power Factor	49	71	81	86	88	89	87
Efficiency	87.9	92.1	93	92.8	92.3	91.5	92.5
Speed	1792	1784	1776	1766	1759	1750	1762
Line amperes	7.9	10.5	13.7	17.2	21	25	19.5

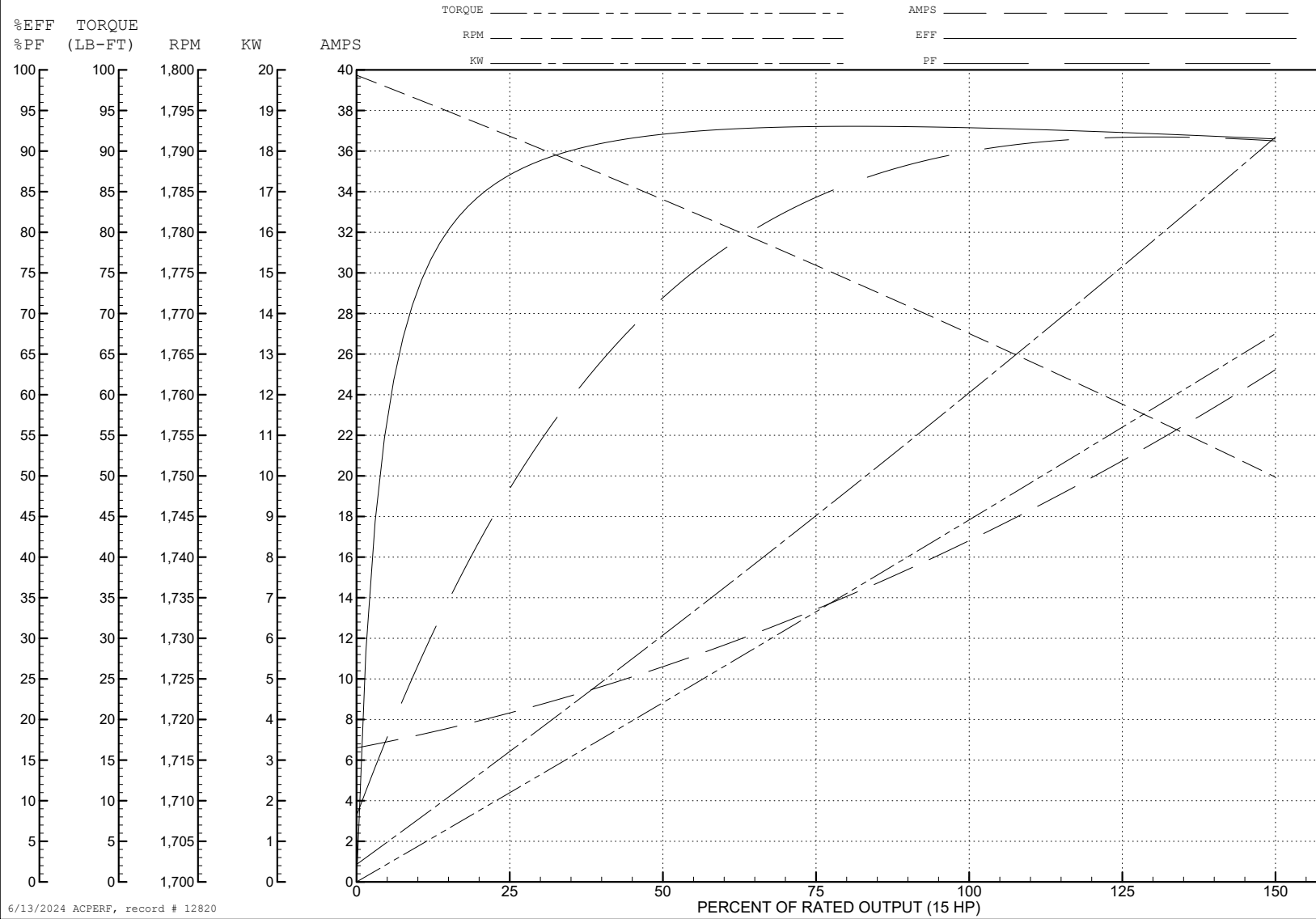
ABB Motors and Mechanical Inc.

WINDING # 39WGW595

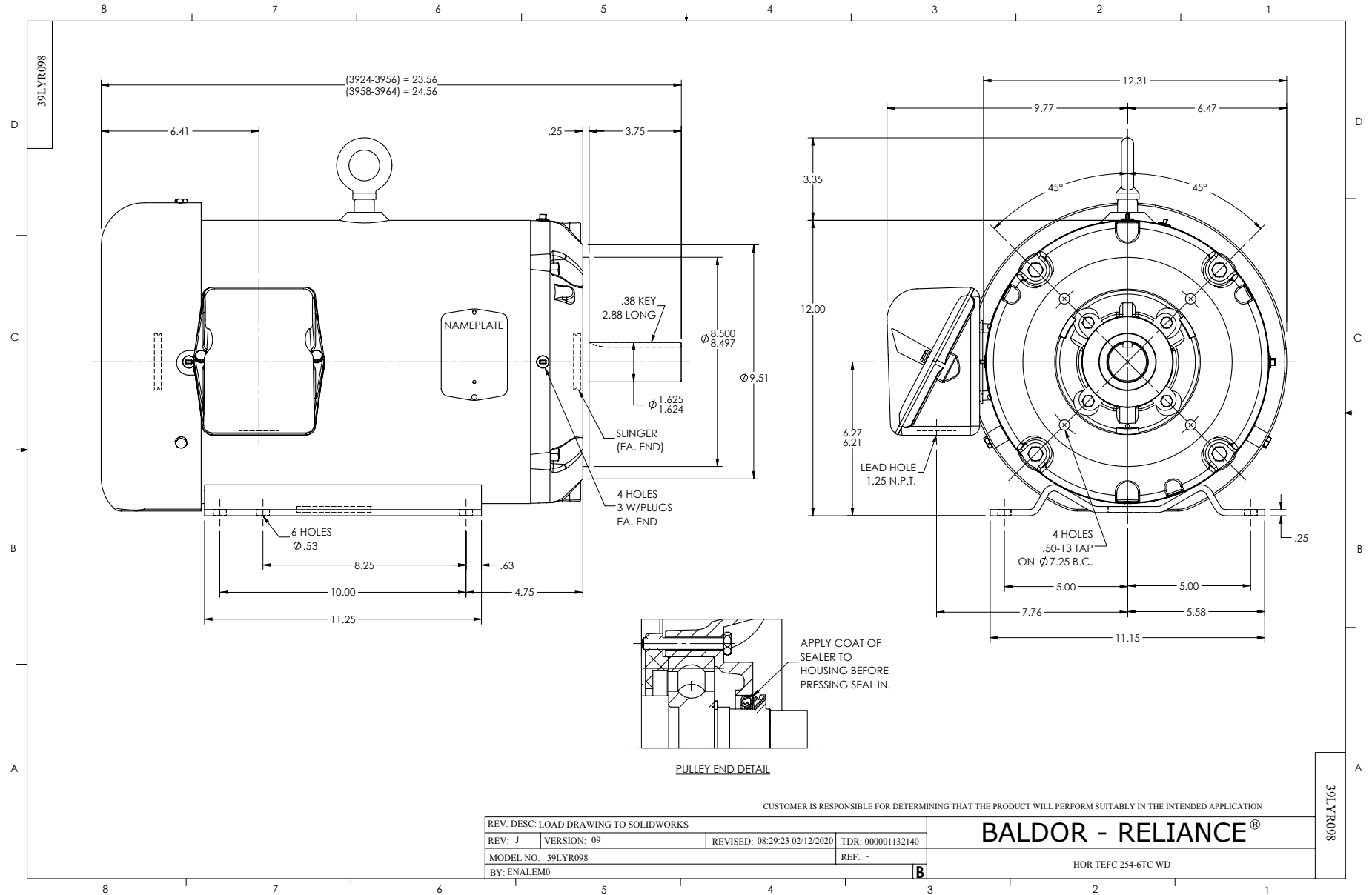
Typical performance - not guaranteed values.

15 HP 3 PH 60 HZ 1765 RPM 460 V 3942M

TORQUES (LB-FT): PO=143 PU=75 LR=88 LRA=125



6/13/2024 ACPERF, record # 12820



CD0005



LOW VOLTAGE
(2Y)



LINE

HIGH VOLTAGE
(1Y)



LINE

NOTES:

1. INTERCHANGE ANY TWO LINE LEADS TO REVERSE ROTATION.
2. OPTIONAL THERMOSTATS ARE PROVIDED WHEN SPECIFIED.
3. ACTUAL NUMBER OF INTERNAL PARALLEL CIRCUITS MAY BE A MULTIPLE OF THOSE SHOWN ABOVE.
4. LEAD COLORS ARE OPTIONAL. LEADS MUST ALWAYS BE NUMBERED AS SHOWN.

CD0005

REV. DESC: REVISE TO SHOW OPTIONAL COLORS			
REV. LTR: E	BY: JLP	REVISED: 01/19/99 10:15	TDR: 0171435
S00000		FILE: AAA00005140	MDL: -
		MTL: -	

BALDOR ELECTRIC Co.

3PH, DV, 9 LEADS