

Specifications

Enclosure	TEFC
Frame	254TC
Frame Material	Iron
Frequency	60.00 Hz
Haz Area Class and Group	None
Haz Area Division	Not Applicable
Motor Letter Type	Three Phase
Output @ Frequency	5.000 HP @ 60 HZ
Phase	3
Synchronous Speed @ Frequency	900 RPM @ 60 HZ
Voltage @ Frequency	230.0 V @ 60 HZ 460.0 V @ 60 HZ
Agency Approvals	CSA EEV NEMA PREMIUM NEMA_PREMIUM UR
Ambient Temperature	40 °C
Auxillary Box	No Auxillary Box
Auxillary Box Lead Termination	None
Base Indicator	Rigid
Bearing Grease Type	Polyrex EM (-20F +300F)
Blower	None
Current @ Voltage	8.600 A @ 460.0 V 17.800 A @ 208.0 V 17.200 A @ 230.0 V
Design Code	A
Drip Cover	No Drip Cover
Duty Rating	CONT
Efficiency @ 100% Load	86.5 %
Electrically Isolated Bearing	Not Electrically Isolated
Feedback Device	NO FEEDBACK
Front Shaft Indicator	None

Part detail

Revision	E
Type	AC
Mech. spec.	09N67
Base	
Status	PRD/A
Elec. spec.	09WGT414
Layout	09LYN067
Eff. date	02-14-2024
CD Diagram	CD0005
Poles	08
Leads	9#12
Proprietary	False
Created date	12-20-2021

Heater Indicator	No Heater
High Voltage Full Load Amps	8.6 a
Insulation Class	F
Inverter Code	Inverter Ready
KVA Code	K
Lifting Lugs	Standard Lifting Lugs
Locked Bearing Indicator	Locked Bearing
Motor Lead Quantity/Wire Size	9 @ 12 AWG
Motor Lead Termination	Flying Leads
Motor Standards	NEMA
Motor Type	0952M
Mounting Arrangement	F1
Number of Poles	8
Overall Length	23.57 IN
Power Factor	61
Product Family	Washdown Features
Pulley End Bearing Type	Sealed Bearing
Pulley Face Code	C-Face
Pulley Shaft Indicator	Standard
Rodent Screen	None
Service Factor	1.15
Shaft Diameter	1.625 IN
Shaft Ground Indicator	No Shaft Grounding
Shaft Rotation	Reversible
Shaft Slinger Indicator	Shaft Slinger
Speed	880 rpm
Speed Code	Single Speed
Starting Method	Direct on line
Thermal Device - Bearing	None
Thermal Device - Winding	None
Vibration Sensor Indicator	No Vibration Sensor
Winding Thermal 1	None
Winding Thermal 2	None

Nameplate

NP1669L									
CAT.NO.	CEWDM2280T								
SPEC.	09N067T414								
HP	5								
VOLTS	230/460								
AMP	17.2/8.6								
RPM	880								
FRAME	254TC		HZ	60		PH	3		
SER.F.	1.15	CODE	K	DES	A	CLASS	F		
NEMA-NOM-EFF	86.5	PF	61						
RATING	40C AMB-CONT								
CC	010A								
DE	6309		ODE	6208					
ENCL	TEFC	SN							
BLANK	10:1 CT/VT								

AC Induction Motor Performance Data

Record # 62448

Typical performance - not guaranteed values

Winding: 09WGT414-R001		Type: 0952M		Enclosure: TEFC	
Nameplate Data			460 V, 60 Hz: High Voltage Connection		
Rated Output (HP)	5	Full Load Torque	29.55 LB-FT		
Volts	230/460	Start Configuration	direct on line		
Full Load Amps	17.2/8.6	Breakdown Torque	82 LB-FT		
R.P.M.	880	Pull-up Torque	46.8 LB-FT		
Hz	60 Phase	3	Locked-rotor Torque	72.2 LB-FT	
NEMA Design Code	A KVA Code	K	Starting Current	53.5 A	
Service Factor (S.F.)	1.15	No-load Current	5.53 A		
NEMA Nom. Eff.	86.5 Power Factor	61	Line-line Res. @ 25°C	1.6349 Ω	
Rating - Duty	40C AMB-CONT	Temp. Rise @ Rated Load	42°C		
S.F. Amps	19/9.5	Temp. Rise @ S.F. Load	50°C		
		Locked-rotor Power Factor	27.3		
		Rotor inertia	4.19 lb-ft ²		

Load Characteristics 460 V, 60 Hz, 5 HP

% of Rated Load	25	50	75	100	125	150	S.F.
Power Factor	26	42	54	61	66	70	64
Efficiency	78.6	86	87.9	88.2	87.6	86.6	87.8
Speed	896.5	893.4	889.8	886	882.1	877.6	884
Line amperes	5.8	6.45	7.42	8.62	10	11.7	9.45

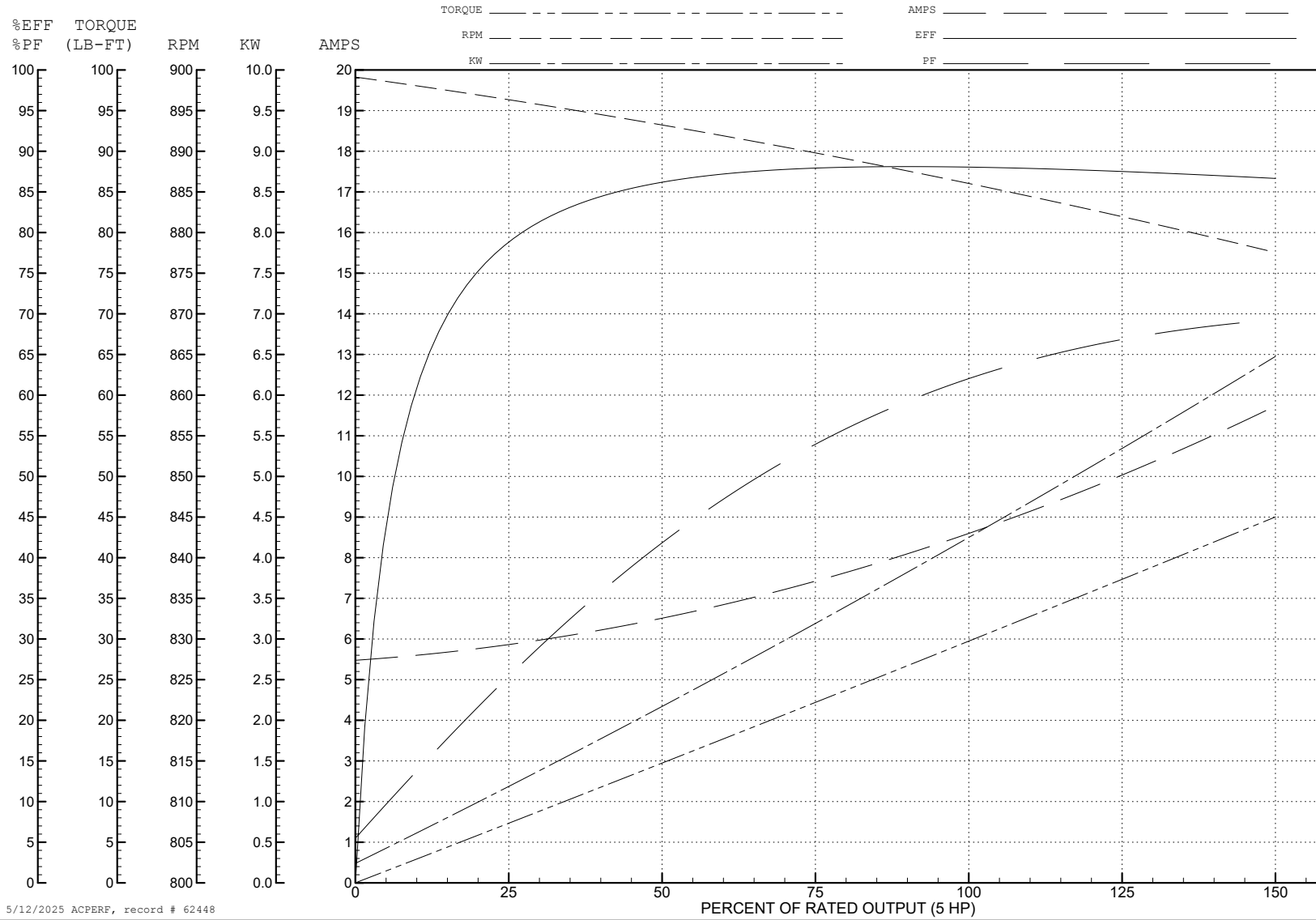
ABB Motors and Mechanical Inc.

WINDING # 09WGT414

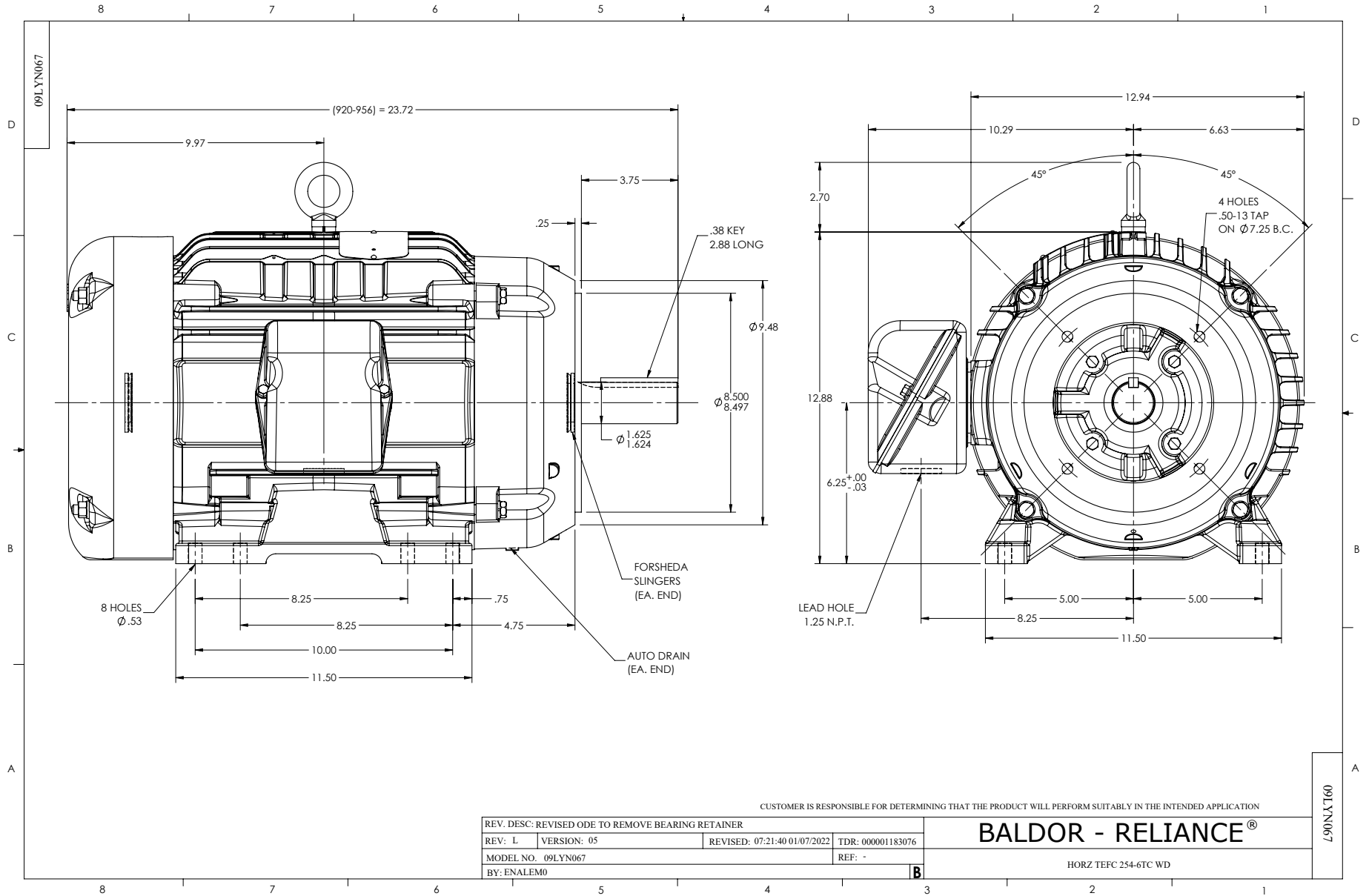
5 HP 3 PH 60 HZ 880 RPM 460 V 0952M

Typical performance - not guaranteed values.

TORQUES (LB-FT): PO=82 PU=46.8 LR=72.2 LRA=53.5



5/12/2025 ACPERF, record # 62448



CUSTOMER IS RESPONSIBLE FOR DETERMINING THAT THE PRODUCT WILL PERFORM SUITABLY IN THE INTENDED APPLICATION

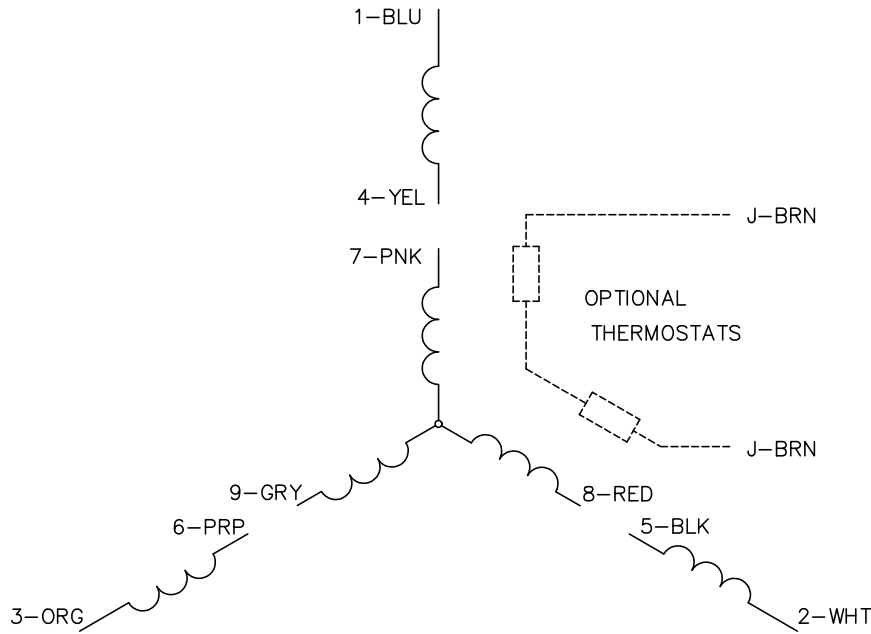
REV. DESC: REVISED ODE TO REMOVE BEARING RETAINER			
REV: L	VERSION: 05	REVISED: 07:21:40 01/07/2022	TDR: 000001183076
MODEL NO. 09LYN067		REF: -	
BY: ENALEM0			

BALDOR - RELIANCE®

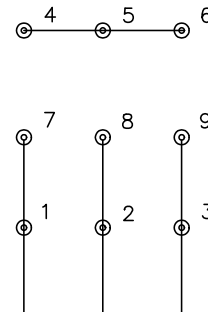
HORZ TEFC 254-6TC WD

09LYN067

CD0005

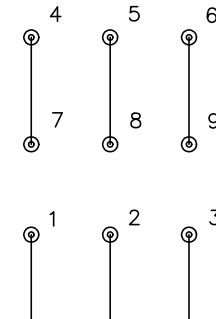


LOW VOLTAGE
(2Y)



LINE

HIGH VOLTAGE
(1Y)



LINE

NOTES:

1. INTERCHANGE ANY TWO LINE LEADS TO REVERSE ROTATION.
2. OPTIONAL THERMOSTATS ARE PROVIDED WHEN SPECIFIED.
3. ACTUAL NUMBER OF INTERNAL PARALLEL CIRCUITS MAY BE A MULTIPLE OF THOSE SHOWN ABOVE.
4. LEAD COLORS ARE OPTIONAL. LEADS MUST ALWAYS BE NUMBERED AS SHOWN.

CD0005

REV. DESC: REVISE TO SHOW OPTIONAL COLORS			
REV. LTR: E	BY: JLP	REVISED: 01/19/99 10:15	TDR: 0171435
S00000		FILE: AAA00005140	MDL: -
		MTL: -	

BALDOR ELECTRIC Co.

3PH, DV, 9 LEADS