



Customer information packet

CEUHM3615T

5HP, 1750RPM, 3PH, 60HZ, 184TC, 3642M, TEFC, F1

Class - None

Division - Not Applicable

Specifications

| | |
|--------------------------------|---|
| Enclosure | TEFC |
| Frame | 184TC |
| Frame Material | Steel |
| Frequency | 60.00 Hz |
| Haz Area Class and Group | None |
| Haz Area Division | Not Applicable |
| Motor Letter Type | Three Phase |
| Output @ Frequency | 5.000 HP @ 60 HZ |
| Phase | 3 |
| Synchronous Speed @ Frequency | 1800 RPM @ 60 HZ |
| Voltage @ Frequency | 460.0 V @ 60 HZ 230.0 V @ 60 HZ |
| Agency Approvals | CSA CSA EEV UR |
| Ambient Temperature | 40 °C |
| Auxillary Box | No Auxillary Box |
| Auxillary Box Lead Termination | None |
| Base Indicator | Rigid |
| Bearing Grease Type | Polyrex EM (-20F +300F) |
| Blower | None |
| Current @ Voltage | 13.900 A @ 208.0 V 6.700 A @ 460.0 V 13.400 A @ 230.0 V |
| Design Code | B |
| Drip Cover | No Drip Cover |
| Duty Rating | CONT |
| Efficiency @ 100% Load | 89.5 % |
| Electrically Isolated Bearing | Not Electrically Isolated |
| Feedback Device | NO FEEDBACK |
| Front Face Code | Standard |
| Front Shaft Indicator | None |

Part detail

| | |
|--------------|------------|
| Revision | K |
| Type | AC |
| Mech. spec. | 36A002 |
| Base | |
| Status | PRD/A |
| Elec. spec. | 36WGS268 |
| Layout | 36LYA002 |
| Eff. date | 06-28-2023 |
| CD Diagram | CD0005 |
| Poles | 04 |
| Leads | 9#16 |
| Proprietary | False |
| Created date | 08-02-2010 |

| | |
|-------------------------------|---------------------|
| Heater Indicator | No Heater |
| High Voltage Full Load Amps | 6.7 a |
| Insulation Class | F |
| Inverter Code | Inverter Ready |
| KVA Code | J |
| Lifting Lugs | No Lifting Lugs |
| Locked Bearing Indicator | Locked Bearing |
| Motor Lead Exit | Ko Box |
| Motor Lead Quantity/Wire Size | 9 @ 16 AWG |
| Motor Lead Termination | Flying Leads |
| Motor Standards | NEMA |
| Motor Type | 3642M |
| Mounting Arrangement | F1 |
| Number of Poles | 4 |
| Overall Length | 18.05 IN |
| Power Factor | 78 |
| Product Family | General Purpose |
| Pulley End Bearing Type | Ball |
| Pulley Face Code | C-Face |
| Pulley Shaft Indicator | Standard |
| Rodent Screen | None |
| Service Factor | 1.15 |
| Shaft Diameter | 1.125 IN |
| Shaft Extension Location | Pulley End |
| Shaft Ground Indicator | No Shaft Grounding |
| Shaft Rotation | Reversible |
| Shaft Slinger Indicator | No Slinger |
| Speed | 1750 rpm |
| Speed Code | Single Speed |
| Starting Method | Direct on line |
| Thermal Device - Bearing | None |
| Thermal Device - Winding | None |
| Vibration Sensor Indicator | No Vibration Sensor |
| Winding Thermal 1 | None |

Winding Thermal 2

None

Nameplate

| NP1259L | | | | | | | | | |
|---------------------|--------------|-------------|-----------|------------|---|-----------|---|--|--|
| CAT.NO. | CEUHM3615T | | | | | | | | |
| SPEC. | 36A002S268G2 | | | | | | | | |
| HP | 5 | | | | | | | | |
| VOLTS | 230/460 | | | | | | | | |
| AMP | 13.4/6.7 | | | | | | | | |
| RPM | 1750 | | | | | | | | |
| FRAME | 184TC | | HZ | 60 | | PH | 3 | | |
| SER.F. | 1.15 | CODE | J | DES | B | CL | F | | |
| NEMA-NOM-EFF | 89.5 | PF | 78 | | | | | | |
| RATING | 40C AMB-CONT | | | | | | | | |
| CC | 010A | | | | | | | | |
| DE | 6206 | ODE | 6205 | | | | | | |
| ENCL | TEFC | SN | | | | | | | |

AC Induction Motor Performance Data

Record # 35063

Typical performance - not guaranteed values

| Winding: 36WGS268-R016 | | Type: 3642M | | Enclosure: TEFC | |
|-------------------------------|--------------------------|----------------------------|--|--------------------------|--|
| Nameplate Data | | | 460 V, 60 Hz: High Voltage Connection | | |
| Rated Output (HP) | 5 | Full Load Torque | 14.9 LB-FT | | |
| Volts | 230/460 | Start Configuration | direct on line | | |
| Full Load Amps | 13.4/6.7 | Breakdown Torque | 52.2 LB-FT | | |
| R.P.M. | 1750 | Pull-up Torque | 31.5 LB-FT | | |
| Hz | 60 Phase | 3 | Locked-rotor Torque | 34.9 LB-FT | |
| NEMA Design Code | B KVA Code | J | Starting Current | 49.1 A | |
| Service Factor (S.F.) | | 1.15 | No-load Current | 3.24 A | |
| NEMA Nom. Eff. | 89.5 Power Factor | 78 | Line-line Res. @ 25°C | 2.27 Ω | |
| Rating - Duty | 40C AMB-CONT | | Temp. Rise @ Rated Load | 71°C | |
| S.F. Amps | | | Temp. Rise @ S.F. Load | 87°C | |
| | | | Locked-rotor Power Factor | 39.8 | |
| | | | Rotor inertia | 0.391 LB-FT ² | |

Load Characteristics 460 V, 60 Hz, 5 HP

| % of Rated Load | 25 | 50 | 75 | 100 | 125 | 150 | S.F. |
|------------------------|-----------|-----------|-----------|------------|------------|------------|-------------|
| Power Factor | 39 | 60 | 72 | 78 | 83 | 83 | 81 |
| Efficiency | 85 | 89.7 | 90.6 | 89.6 | 88.6 | 87 | 89 |
| Speed | 1789 | 1776 | 1762 | 1750 | 1733 | 1714 | 1740 |
| Line amperes | 3.55 | 4.31 | 5.43 | 6.65 | 7.94 | 9.64 | 7.42 |

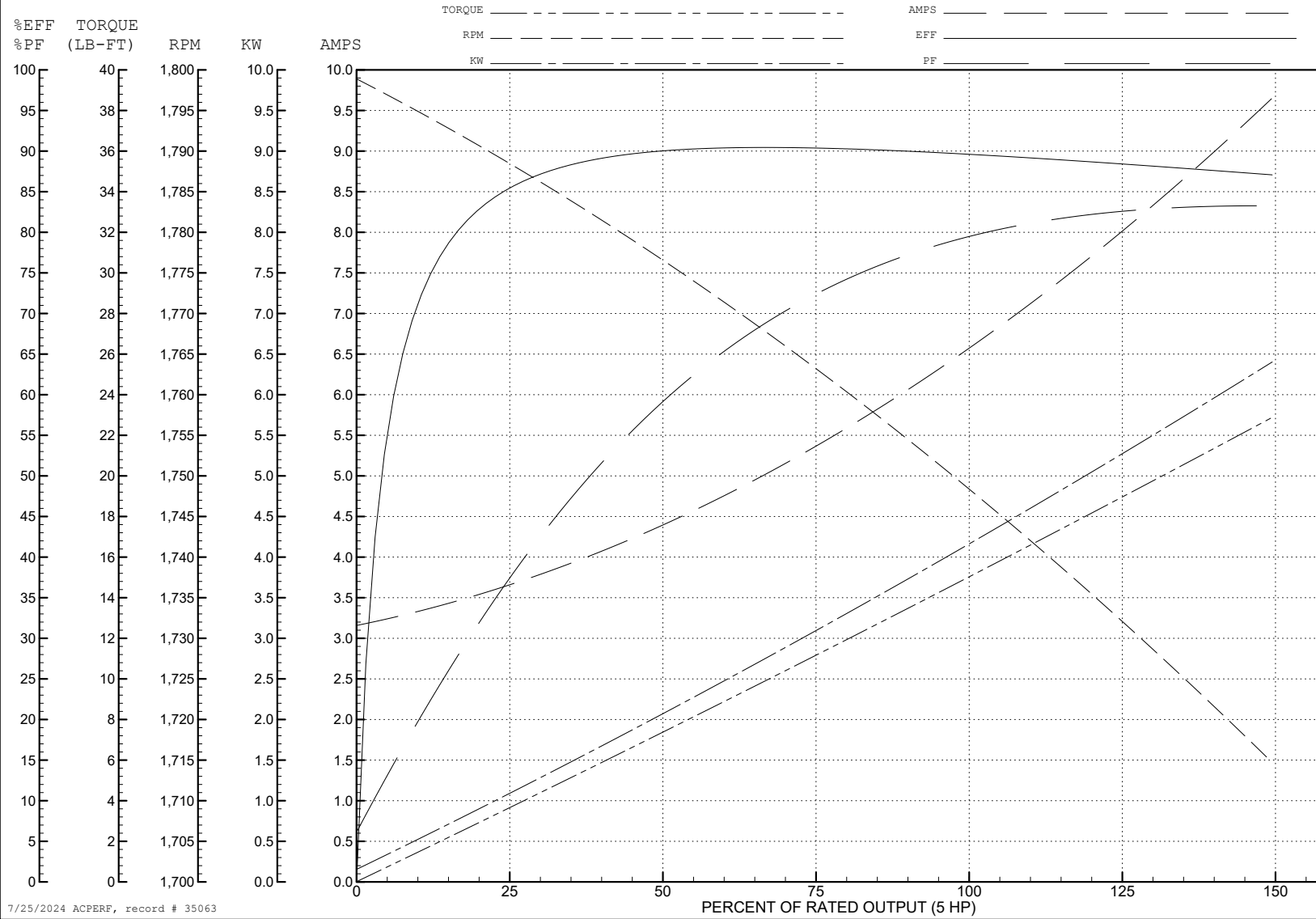
ABB Motors and Mechanical Inc.

WINDING # 36WGS268

5 HP 3 PH 60 HZ 1750 RPM 460 V 3642M

Typical performance - not guaranteed values.

TORQUES (LB-FT): PO=52.2 PU=31.5 LR=34.9 LRA=49.1



7/25/2024 ACPERF, record # 35063

AC Induction Motor Performance Data

Record # 93277

Typical performance - not guaranteed values

| Winding: 36WGS268-R016 | | Type: 3642M | | Enclosure: TEFC | |
|-------------------------------|--------------------------|--------------------|---|--------------------------|--|
| Nameplate Data | | | 230 V, 60 Hz: Low Voltage Connection | | |
| Rated Output (HP) | 5 | | Full Load Torque | 14.9 LB-FT | |
| Volts | 230/460 | | Start Configuration | direct on line | |
| Full Load Amps | 13.4/6.7 | | Breakdown Torque | 52.2 LB-FT | |
| R.P.M. | 1750 | | Pull-up Torque | 31.5 LB-FT | |
| Hz | 60 Phase | 3 | Locked-rotor Torque | 34.9 LB-FT | |
| NEMA Design Code | B KVA Code | J | Starting Current | 98.2 A | |
| Service Factor (S.F.) | 1.15 | | No-load Current | 6.48 A | |
| NEMA Nom. Eff. | 89.5 Power Factor | 78 | Line-line Res. @ 25°C | 0.567 Ω | |
| Rating - Duty | 40C AMB-CONT | | Temp. Rise @ Rated Load | 71°C | |
| S.F. Amps | | | Temp. Rise @ S.F. Load | 86°C | |
| | | | Locked-rotor Power Factor | 39.8 | |
| | | | Rotor inertia | 0.391 lb-ft ² | |

Load Characteristics 230 V, 60 Hz, 5 HP

| % of Rated Load | 25 | 50 | 75 | 100 | 125 | 150 | S.F. |
|------------------------|-----------|-----------|-----------|------------|------------|------------|-------------|
| Power Factor | 38 | 60 | 72 | 78 | 83 | 83 | 81 |
| Efficiency | 84.9 | 89.6 | 90.5 | 89.6 | 88.5 | 87 | 88.9 |
| Speed | 1789 | 1776 | 1762 | 1750 | 1733 | 1714 | 1740 |
| Line amperes | 7.1 | 8.62 | 10.86 | 13.3 | 15.88 | 19.28 | 14.8 |

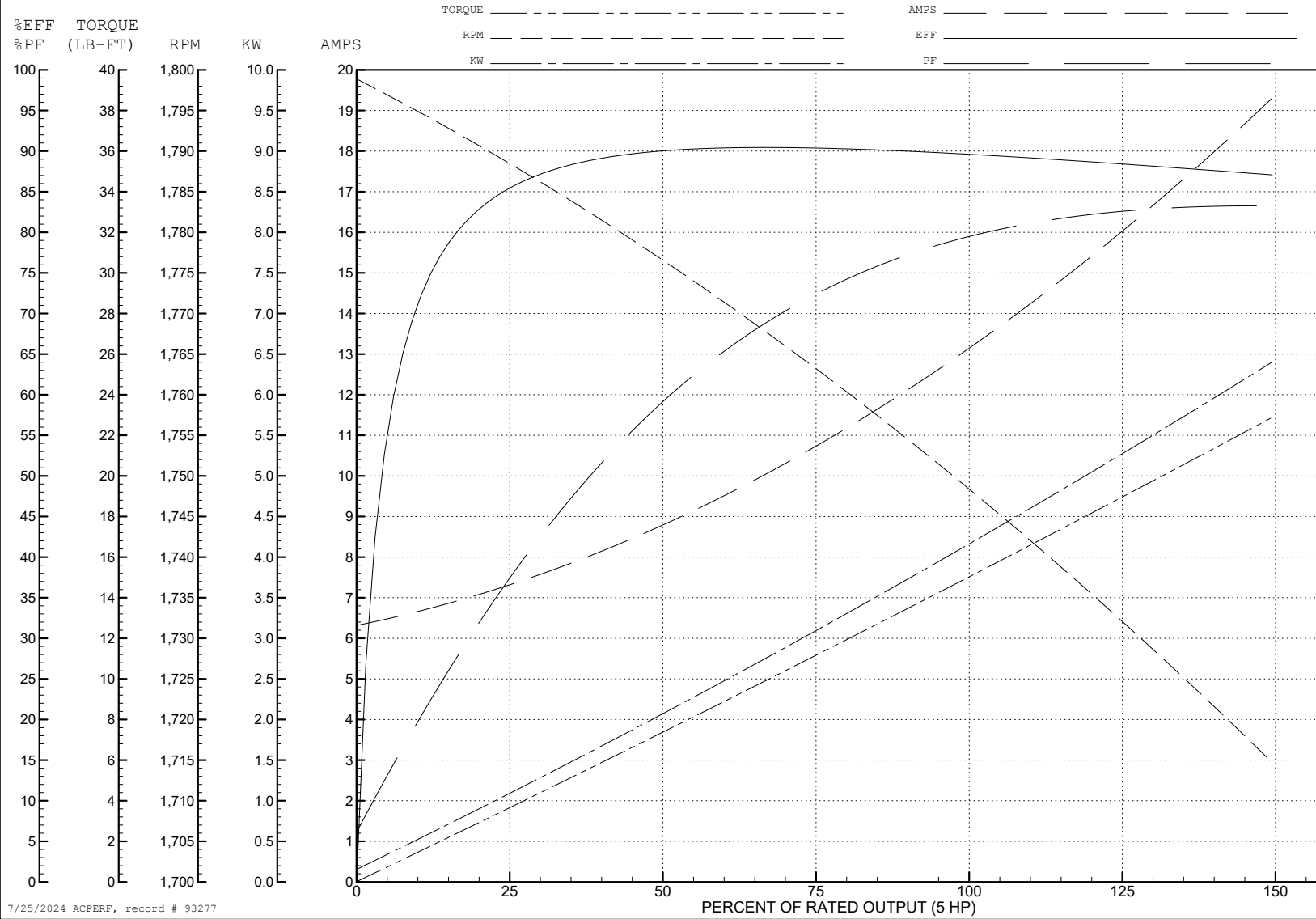
ABB Motors and Mechanical Inc.

WINDING # 36WGS268

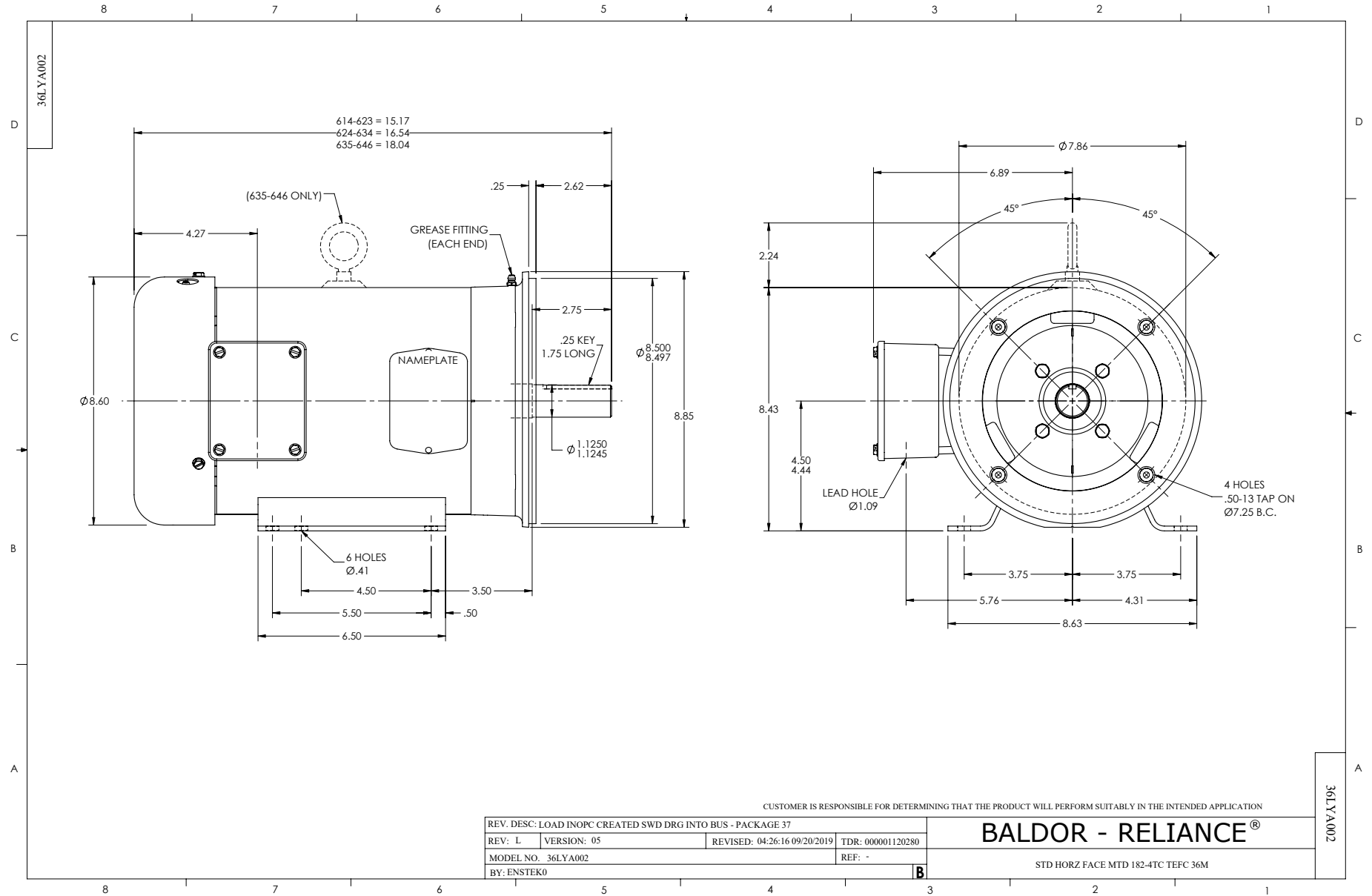
5 HP 3 PH 60 HZ 1750 RPM 230 V 3642M

Typical performance - not guaranteed values.

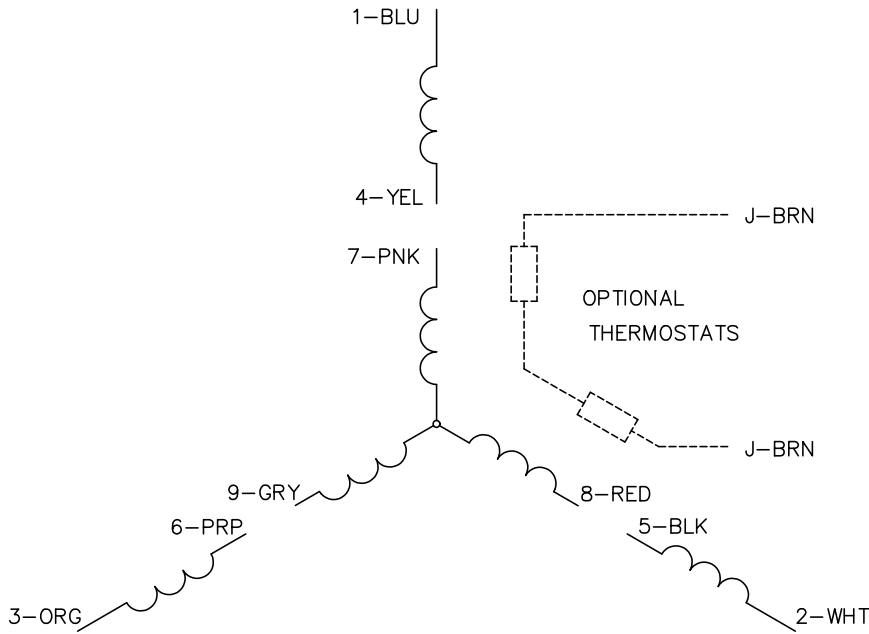
TORQUES (LB-FT): PO=52.2 PU=31.5 LR=34.9 LRA=98.2



7/25/2024 ACPERF, record # 93277



CD0005



LOW VOLTAGE
(2Y)



LINE

HIGH VOLTAGE
(1Y)



LINE

NOTES:

1. INTERCHANGE ANY TWO LINE LEADS TO REVERSE ROTATION.
2. OPTIONAL THERMOSTATS ARE PROVIDED WHEN SPECIFIED.
3. ACTUAL NUMBER OF INTERNAL PARALLEL CIRCUITS MAY BE A MULTIPLE OF THOSE SHOWN ABOVE.
4. LEAD COLORS ARE OPTIONAL. LEADS MUST ALWAYS BE NUMBERED AS SHOWN.

CD0005

| | | | |
|---|---------|-------------------------|--------------|
| REV. DESC: REVISE TO SHOW OPTIONAL COLORS | | | |
| REV. LTR: E | BY: JLP | REVISED: 01/19/99 10:15 | TDR: 0171435 |
| S00000 | | FILE: AAA00005140 | MDL: - |
| | | MTL: - | |

BALDOR ELECTRIC Co.

3PH, DV, 9 LEADS