

BALDOR • RELIANCE

Customer information packet

CEUHM3546

1HP, 1770RPM, 3PH, 60HZ, 56C, 3520M, TEFC, F3, N

Class - None

Division - Not Applicable

Copyright © All product information within this document is subject to ABB Motors and Mechanical Inc. copyright © protection, unless otherwise noted.

10/5/2024 12:52:46 AM

Specifications

Enclosure	TEFC
Frame	56C
Frame Material	Steel
Frequency	60.00 Hz
Haz Area Class and Group	None
Haz Area Division	Not Applicable
Motor Letter Type	Three Phase
Output @ Frequency	1.000 HP @ 60 HZ
Phase	3
Synchronous Speed @ Frequency	1800 RPM @ 60 HZ
Voltage @ Frequency	460.0 V @ 60 HZ 230.0 V @ 60 HZ
Agency Approvals	CE CSA EEV NEMA PREMIUM NEMA_PREMIUM UR WEEE
Ambient Temperature	40 °C
Auxillary Box	No Auxillary Box
Auxillary Box Lead Termination	None
Base Indicator	Rigid
Bearing Grease Type	Polyrex EM (-20F +300F)
Blower	None
Current @ Voltage	3.200 A @ 230.0 V 3.200 A @ 208.0 V 1.600 A @ 460.0 V
Design Code	B
Drip Cover	No Drip Cover
Duty Rating	CONT
Efficiency @ 100% Load	85.5 %
Electrically Isolated Bearing	Not Electrically Isolated

Part detail

Revision	E
Type	AC
Mech. spec.	35X046
Base	
Status	PRD/A
Elec. spec.	35WGG004
Layout	35LYX046
Eff. date	05-03-2024
CD Diagram	CD0005
Poles	04
Leads	9#18 Y
Proprietary	False
Created date	01-10-2022

Feedback Device	NO FEEDBACK
Front Shaft Indicator	None
Heater Indicator	No Heater
High Voltage Full Load Amps	1.6 a
Insulation Class	F
Inverter Code	Inverter Ready
KVA Code	N
Lifting Lugs	No Lifting Lugs
Locked Bearing Indicator	Locked Bearing
Motor Lead Quantity/Wire Size	9 @ 18 AWG
Motor Lead Termination	Flying Leads
Motor Standards	NEMA
Motor Type	3520M
Mounting Arrangement	F3
Number of Poles	4
Overall Length	12.22 IN
Power Factor	69
Product Family	General Purpose
Pulley End Bearing Type	Ball
Pulley Face Code	C-Face
Pulley Shaft Indicator	Standard
Rodent Screen	None
Service Factor	1.15
Shaft Diameter	0.625 IN
Shaft Ground Indicator	No Shaft Grounding
Shaft Rotation	Reversible
Shaft Slinger Indicator	No Slinger
Speed	1770 rpm
Speed Code	Single Speed
Starting Method	Direct on line
Thermal Device - Bearing	None
Thermal Device - Winding	None
Vibration Sensor Indicator	No Vibration Sensor
Winding Thermal 1	None

Winding Thermal 2

None

Nameplate

NP2934L							
CAT.NO.	CEUHM3546						
SPEC.	35X046G004G1						
HP	1						
VOLTS	230/460						
AMP	3.2/1.6						
R.P.M. (1/MIN)	1770						
FRAME	56C	HZ	60	PH	3		
SER.F.	1.15	CODE	N	DES	B	CL	F
NEMA-NOM-EFF	85.5	PF	69				
RATING	40C AMB-CONT						
CC	010A						
DE	6205	ODE	6203				
ENCL	TEFC	SN					
	SFA 3.4/1.7						

AC Induction Motor Performance Data

Record # 91625

Typical performance - not guaranteed values

Winding: 35WGG004-R001		Type: 3520M		Enclosure: TEFC	
Nameplate Data			460 V, 60 Hz: High Voltage Connection		
Rated Output (HP)		1	Full Load Torque		2.982 LB-FT
Volts		230/460	Start Configuration		direct on line
Full Load Amps		3.2/1.6	Breakdown Torque		14.6 LB-FT
R.P.M.		1770	Pull-up Torque		7.57 LB-FT
Hz	60 Phase	3	Locked-rotor Torque		9.17 LB-FT
NEMA Design Code	B KVA Code	N	Starting Current		14.6 A
Service Factor (S.F.)		1.15	No-load Current		1.2 A
NEMA Nom. Eff.	85.5 Power Factor	69	Line-line Res. @ 25°C		16.049 Ω
Rating - Duty		40C AMB-CONT	Temp. Rise @ Rated Load		36°C
S.F. Amps		3.4/1.7	Temp. Rise @ S.F. Load		41°C
			Locked-rotor Power Factor		61.549
			Rotor inertia		0.144 lb-ft ²

Load Characteristics 460 V, 60 Hz, 1 HP

% of Rated Load	25	50	75	100	125	150	S.F.
Power Factor	29	45	58	67	73	78	71
Efficiency	71.1	81.2	84.7	85.8	86	85.6	85.9
Speed	1794	1787.3	1781.1	1774.3	1767.4	1759.4	1770
Line amperes	1.22	1.31	1.46	1.64	1.86	2.11	1.77

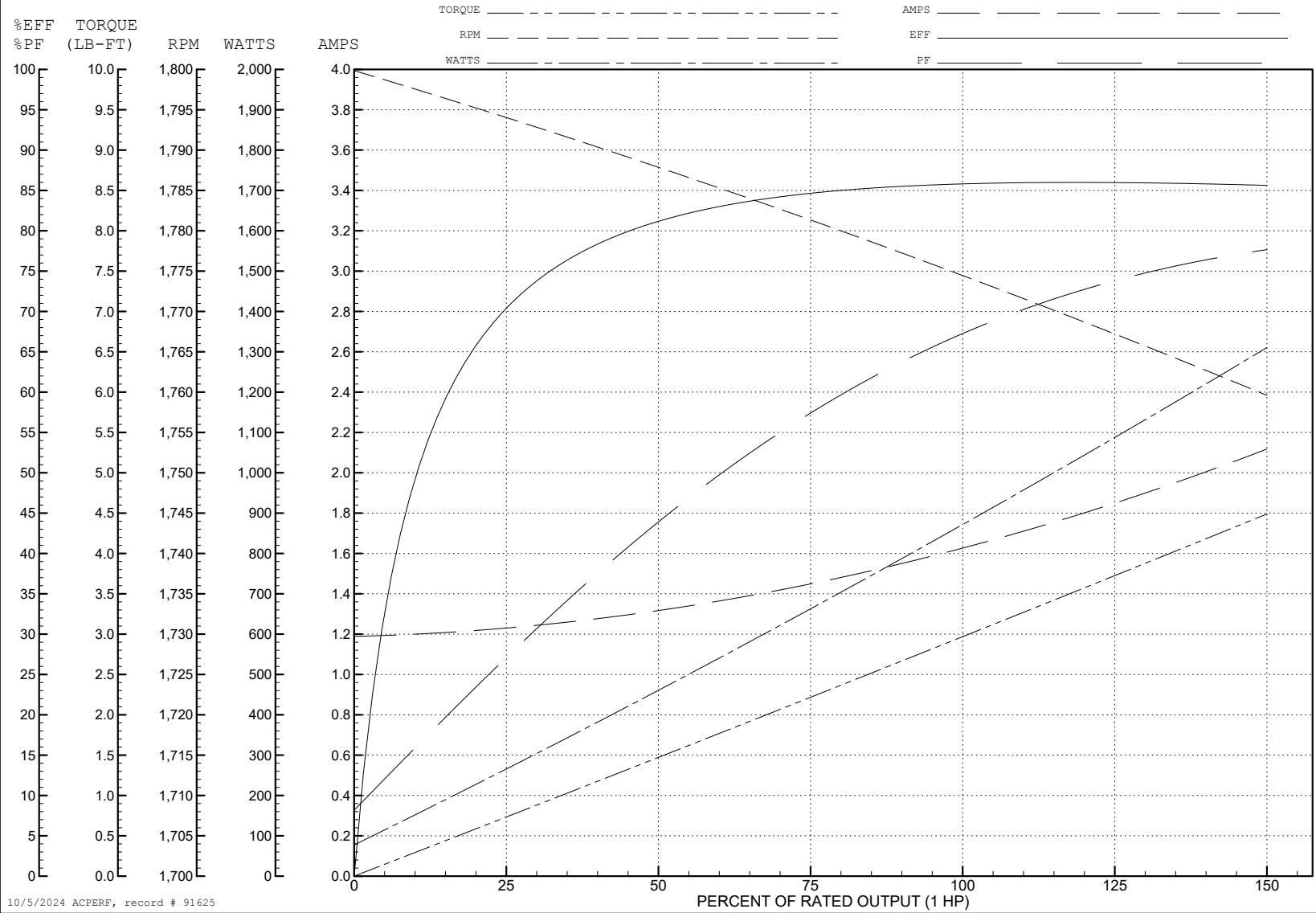
ABB Motors and Mechanical Inc.

WINDING # 35WGG004

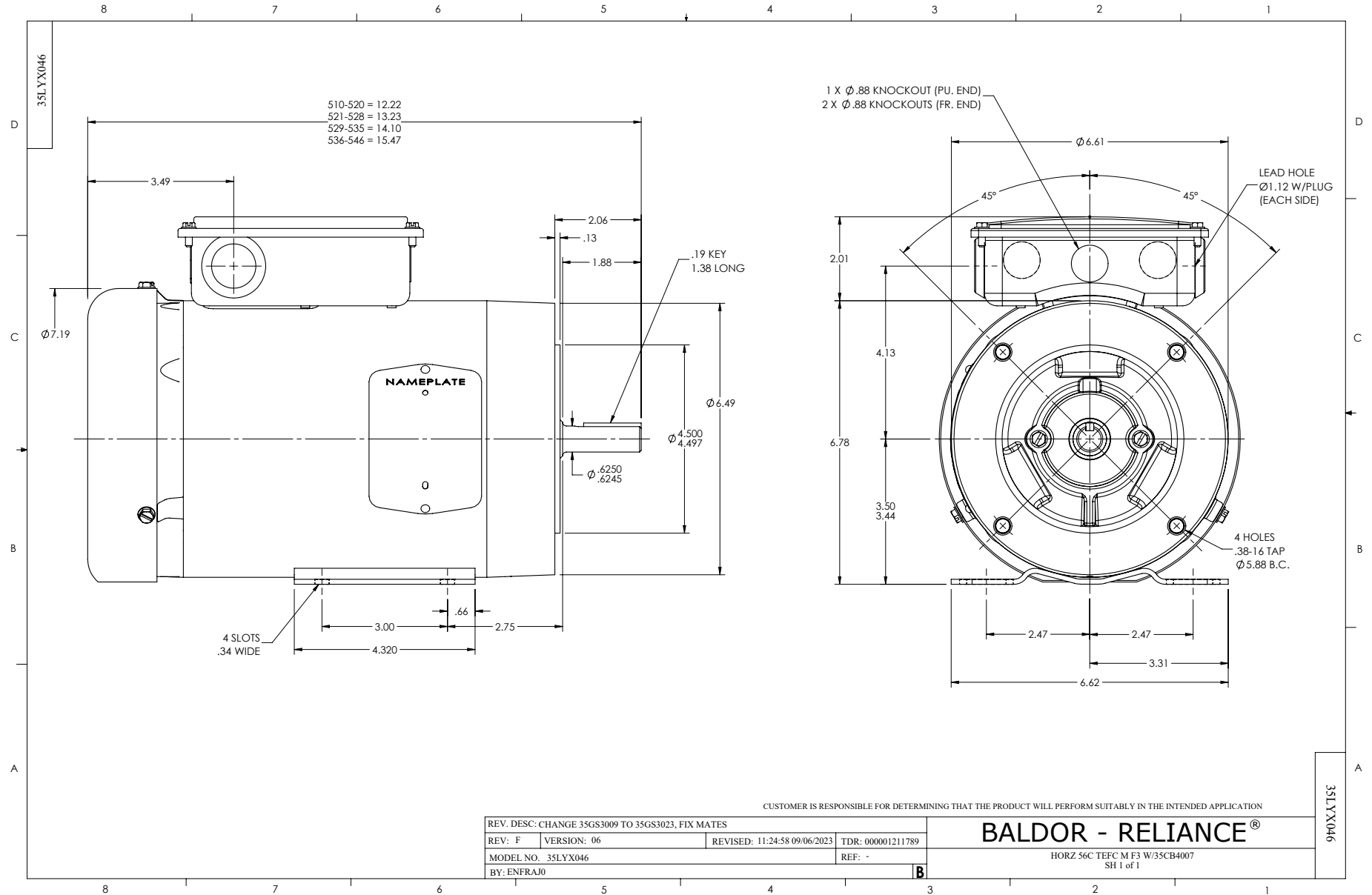
1 HP 3 PH 60 HZ 1770 RPM 460 V 3520M

Typical performance - not guaranteed values.

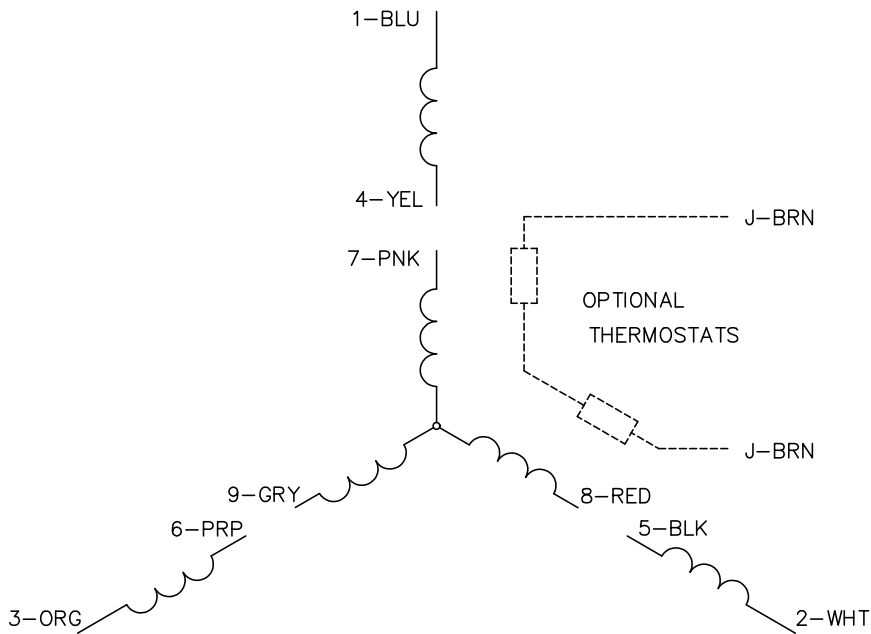
TORQUES (LB-FT): PO=14.6 PU=7.57 LR=9.17 LRA=14.6



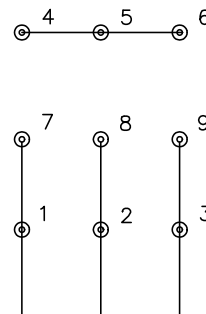
10/5/2024 ACPERF, record # 91625



CD0005

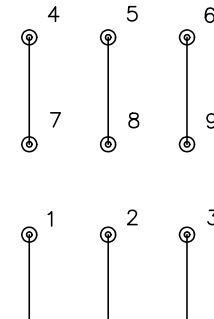


LOW VOLTAGE
(2Y)



LINE

HIGH VOLTAGE
(1Y)



LINE

NOTES:

1. INTERCHANGE ANY TWO LINE LEADS TO REVERSE ROTATION.
2. OPTIONAL THERMOSTATS ARE PROVIDED WHEN SPECIFIED.
3. ACTUAL NUMBER OF INTERNAL PARALLEL CIRCUITS MAY BE A MULTIPLE OF THOSE SHOWN ABOVE.
4. LEAD COLORS ARE OPTIONAL. LEADS MUST ALWAYS BE NUMBERED AS SHOWN.

CD0005

REV. DESC: REVISE TO SHOW OPTIONAL COLORS			
REV. LTR: E	BY: JLP	REVISED: 01/19/99 10:15	TDR: 0171435
S00000		FILE: AAA00005140	MDL: -
		MTL: -	

BALDOR ELECTRIC Co.

3PH, DV, 9 LEADS