



Customer information packet

CESWDM3558T

2HP, 1760RPM, 3PH, 60HZ, 145TC, 3528M, TEFC, F1

Class - None

Division - Not Applicable

Specifications

| | |
|--------------------------------|---|
| Enclosure | TEFC |
| Frame | 145TC |
| Frame Material | Stainless Steel |
| Frequency | 60.00 Hz |
| Haz Area Class and Group | None |
| Haz Area Division | Not Applicable |
| Motor Letter Type | Three Phase |
| Output @ Frequency | 2.000 HP @ 60 HZ |
| Phase | 3 |
| Synchronous Speed @ Frequency | 1800 RPM @ 60 HZ |
| Voltage @ Frequency | 230.0 V @ 60 HZ 460.0 V @ 60 HZ |
| Agency Approvals | CSA EEV NEMA PREMIUM NEMA_PREMIUM UR |
| Ambient Temperature | 40 °C |
| Auxillary Box | No Auxillary Box |
| Auxillary Box Lead Termination | None |
| Base Indicator | Rigid |
| Bearing Grease Type | Polyrex EM (-20F +300F) |
| Blower | None |
| Current @ Voltage | 5.800 A @ 208.0 V 5.600 A @ 230.0 V 2.800 A @ 460.0 V |
| Design Code | B |
| Drip Cover | No Drip Cover |
| Duty Rating | CONT |
| Efficiency @ 100% Load | 86.5 % |
| Electrically Isolated Bearing | Not Electrically Isolated |
| Feedback Device | NO FEEDBACK |
| Front Shaft Indicator | None |

Part detail

| | |
|--------------|------------|
| Revision | B |
| Type | AC |
| Mech. spec. | 35SS628 |
| Base | |
| Status | PRD/A |
| Elec. spec. | 35WGG073 |
| Layout | 35LYSS628 |
| Eff. date | 02-14-2024 |
| CD Diagram | CD0005 |
| Poles | 04 |
| Leads | 9#18 |
| Proprietary | False |
| Created date | 03-11-2022 |

| | |
|-------------------------------|----------------------|
| Heater Indicator | No Heater |
| High Voltage Full Load Amps | 2.8 a |
| Insulation Class | F |
| Inverter Code | Inverter Ready |
| KVA Code | K |
| Lifting Lugs | No Lifting Lugs |
| Locked Bearing Indicator | Locked Bearing |
| Motor Lead Quantity/Wire Size | 9 @ 18 AWG |
| Motor Lead Termination | Flying Leads |
| Motor Standards | NEMA |
| Motor Type | 3528M |
| Mounting Arrangement | F1 |
| Number of Poles | 4 |
| Overall Length | 13.29 IN |
| Power Factor | 77 |
| Product Family | Wash Down Paint Free |
| Pulley End Bearing Type | Sealed Bearing |
| Pulley Face Code | C-Face |
| Pulley Shaft Indicator | Standard |
| Rodent Screen | None |
| Service Factor | 1.15 |
| Shaft Diameter | 0.875 IN |
| Shaft Ground Indicator | No Shaft Grounding |
| Shaft Rotation | Reversible |
| Shaft Slinger Indicator | Shaft Slinger |
| Speed | 1760 rpm |
| Speed Code | Single Speed |
| Starting Method | Direct on line |
| Thermal Device - Bearing | None |
| Thermal Device - Winding | None |
| Vibration Sensor Indicator | No Vibration Sensor |
| Winding Thermal 1 | None |
| Winding Thermal 2 | None |

Nameplate

| NP1669L | | | | | | | | | |
|---------------------|---------------|-------------|------------|------------|---|--------------|---|--|--|
| CAT.NO. | CESWDM3558T | | | | | | | | |
| SPEC. | 35SS628G073G1 | | | | | | | | |
| HP | 2 | | | | | | | | |
| VOLTS | 230/460 | | | | | | | | |
| AMP | 5.6/2.8 | | | | | | | | |
| RPM | 1760 | | | | | | | | |
| FRAME | 145TC | | HZ | 60 | | PH | 3 | | |
| SER.F. | 1.15 | CODE | K | DES | B | CLASS | F | | |
| NEMA-NOM-EFF | 86.5 | PF | 77 | | | | | | |
| RATING | 40C AMB-CONT | | | | | | | | |
| CC | 010A | | | | | | | | |
| DE | 6205 | | ODE | 6203 | | | | | |
| ENCL | TEFC | SN | | | | | | | |
| BLANK | SFA 6.26/3.13 | | | | | | | | |

AC Induction Motor Performance Data

Record # 87157

Typical performance - not guaranteed values

| Winding: 35WGG073-R001 | | Type: 3528M | | Enclosure: TEFC | |
|-------------------------------|--------------------------|--------------------|--|--------------------------|--|
| Nameplate Data | | | 460 V, 60 Hz: High Voltage Connection | | |
| Rated Output (HP) | 2 | | Full Load Torque | 5.99 LB-FT | |
| Volts | 230/460 | | Start Configuration | direct on line | |
| Full Load Amps | 5.6/2.8 | | Breakdown Torque | 20.5 LB-FT | |
| R.P.M. | 1760 | | Pull-up Torque | 13.8 LB-FT | |
| Hz | 60 Phase | 3 | Locked-rotor Torque | 15 LB-FT | |
| NEMA Design Code | B KVA Code | K | Starting Current | 22.5 A | |
| Service Factor (S.F.) | 1.15 | | No-load Current | 1.62 A | |
| NEMA Nom. Eff. | 86.5 Power Factor | 77 | Line-line Res. @ 25°C | 9.54 Ω | |
| Rating - Duty | 40C AMB-CONT | | Temp. Rise @ Rated Load | 64°C | |
| S.F. Amps | 6.3/3.15 | | Temp. Rise @ S.F. Load | 77°C | |
| | | | Locked-rotor Power Factor | 57.9 | |
| | | | Rotor inertia | 0.202 lb-ft ² | |

Load Characteristics 460 V, 60 Hz, 2 HP

| % of Rated Load | 25 | 50 | 75 | 100 | 125 | 150 | S.F. |
|------------------------|-----------|-----------|-----------|------------|------------|------------|-------------|
| Power Factor | 35 | 55 | 68 | 76 | 81 | 84 | 80 |
| Efficiency | 78.3 | 85.3 | 86.9 | 86.5 | 85.3 | 83.6 | 86.1 |
| Speed | 1791 | 1782 | 1771 | 1760 | 1748 | 1734 | 1754 |
| Line amperes | 1.71 | 1.97 | 2.34 | 2.82 | 3.36 | 3.97 | 3.13 |

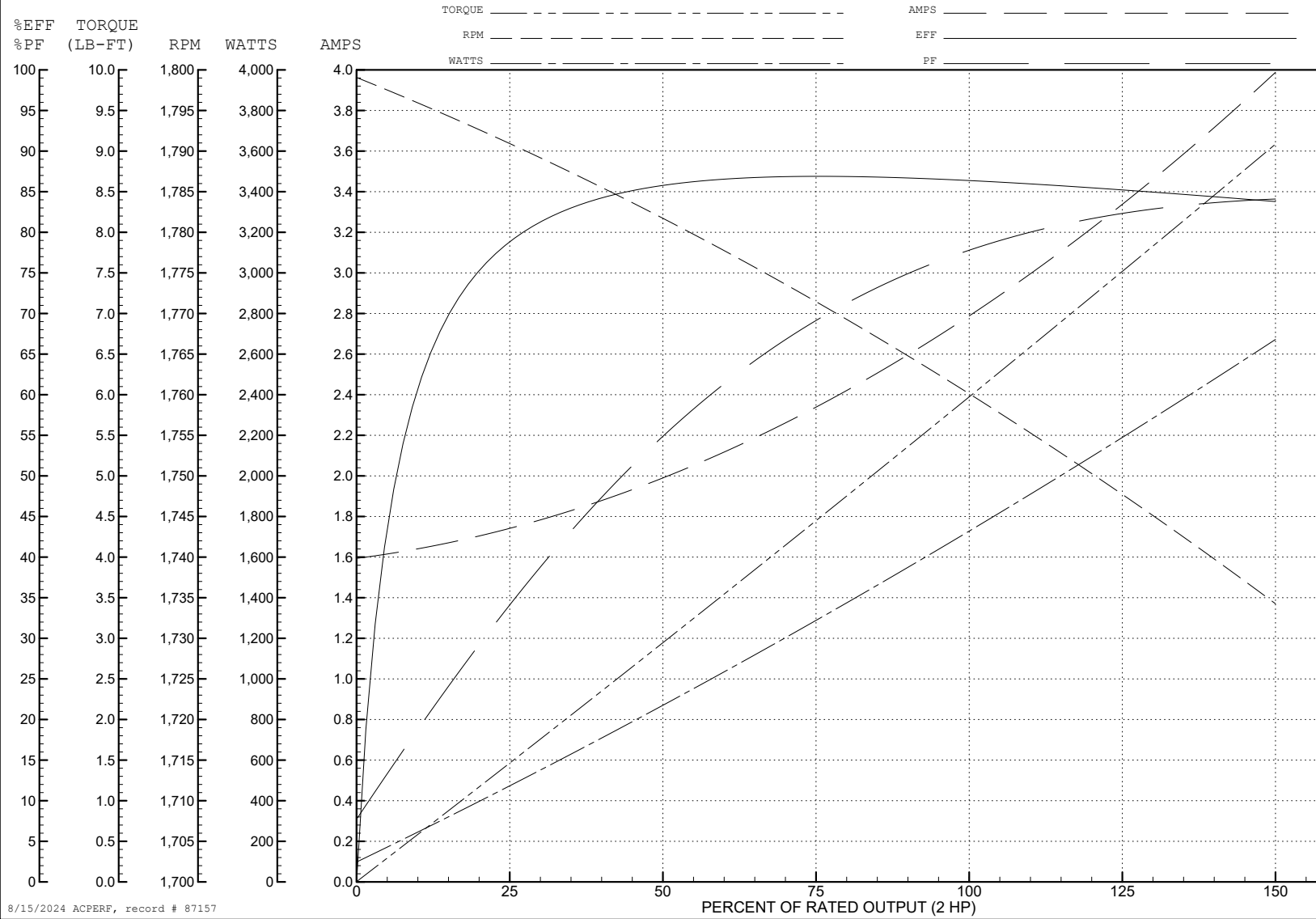
ABB Motors and Mechanical Inc.

WINDING # 35WGG073

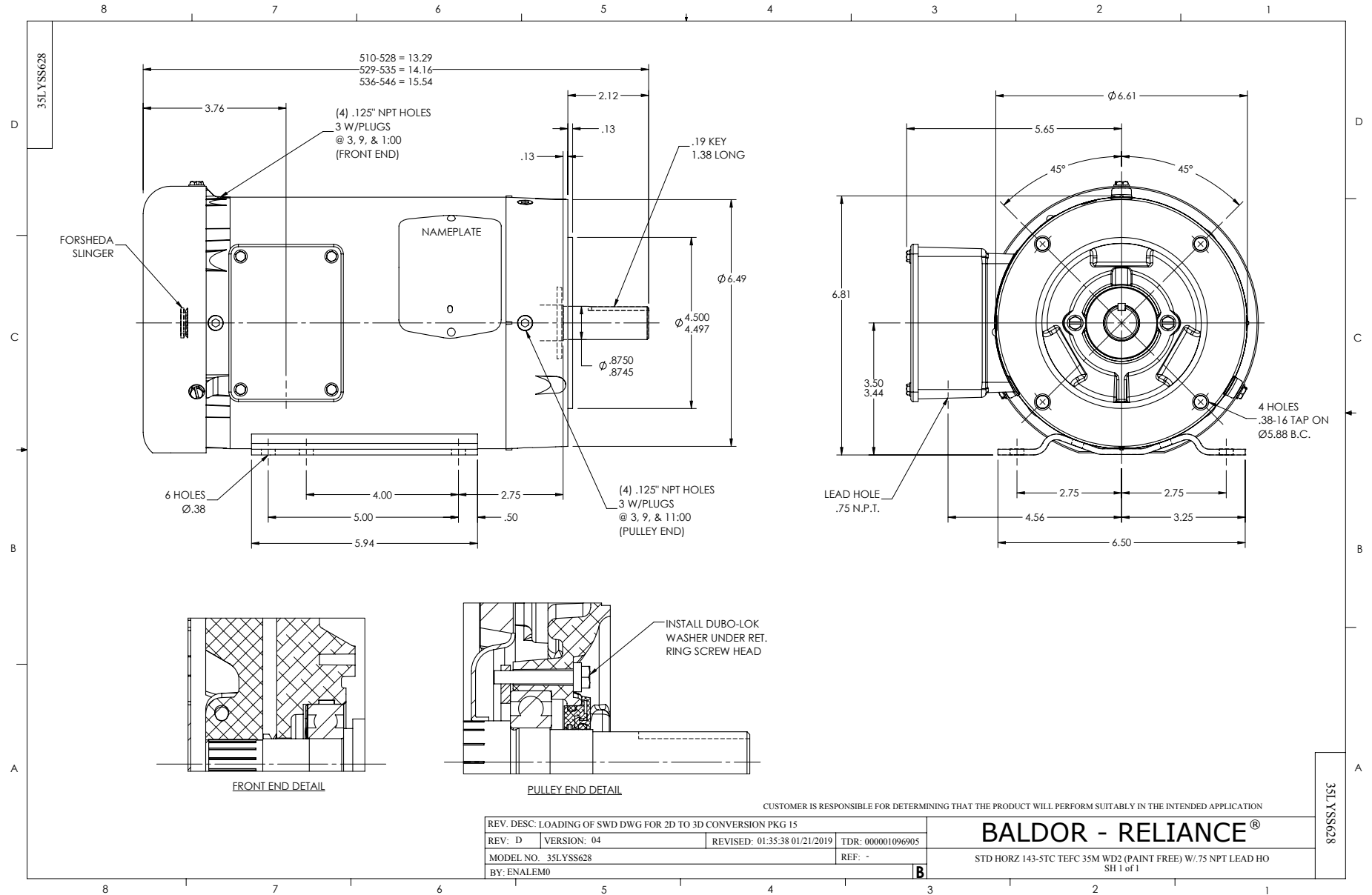
Typical performance - not guaranteed values.

2 HP 3 PH 60 HZ 1760 RPM 460 V 3528M

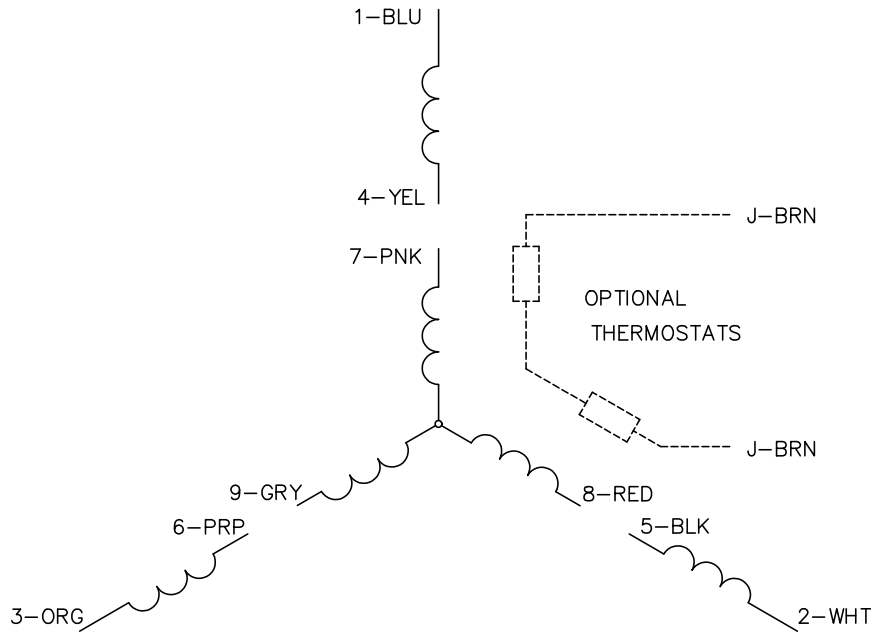
TORQUES (LB-FT): PO=20.5 PU=13.8 LR=15 LRA=22.5



8/15/2024 ACPERF, record # 87157



CD0005

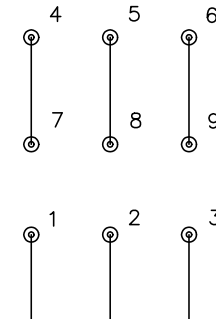


LOW VOLTAGE
(2Y)



LINE

HIGH VOLTAGE
(1Y)



LINE

NOTES:

1. INTERCHANGE ANY TWO LINE LEADS TO REVERSE ROTATION.
2. OPTIONAL THERMOSTATS ARE PROVIDED WHEN SPECIFIED.
3. ACTUAL NUMBER OF INTERNAL PARALLEL CIRCUITS MAY BE A MULTIPLE OF THOSE SHOWN ABOVE.
4. LEAD COLORS ARE OPTIONAL. LEADS MUST ALWAYS BE NUMBERED AS SHOWN.

CD0005

| | | | |
|---|---------|-------------------------|--------------|
| REV. DESC: REVISE TO SHOW OPTIONAL COLORS | | | |
| REV. LTR: E | BY: JLP | REVISED: 01/19/99 10:15 | TDR: 0171435 |
| S00000 | | FILE: AAA00005140 | MDL: - |
| | | MTL: - | |

BALDOR ELECTRIC Co.

3PH, DV, 9 LEADS