

BALDOR • RELIANCE

Customer information packet

CESSWDNM3556-H

1HP, 1180RPM, 3PH, 60HZ, 56HC, 3544M, TENV, F1

Class - None

Division - Not Applicable

Specifications

Enclosure	TENV
Frame	56HC
Frame Material	Stainless Steel
Frequency	60.00 Hz
Haz Area Class and Group	None
Haz Area Division	Not Applicable
Motor Letter Type	Three Phase
Output @ Frequency	1.000 HP @ 60 HZ
Phase	3
Synchronous Speed @ Frequency	1200 RPM @ 60 HZ
Voltage @ Frequency	230.0 V @ 60 HZ 460.0 V @ 60 HZ
Agency Approvals	CSA EEV NEMA PREMIUM NEMA_PREMIUM UR
Ambient Temperature	40 °C
Auxillary Box	No Auxillary Box
Auxillary Box Lead Termination	None
Base Indicator	Rigid
Bearing Grease Type	Polyrex EM (-20F +300F)
Blower	None
Current @ Voltage	4.000 A @ 230.0 V 4.000 A @ 208.0 V 2.000 A @ 460.0 V
Design Code	B
Drip Cover	No Drip Cover
Duty Rating	CONT
Efficiency @ 100% Load	82.5 %
Electrically Isolated Bearing	Not Electrically Isolated
Feedback Device	NO FEEDBACK
Front Shaft Indicator	None

Part detail

Revision	C
Type	AC
Mech. spec.	35E6083
Base	
Status	PRD/A
Elec. spec.	35WGG332
Layout	35LYE6083
Eff. date	01-21-2025
CD Diagram	CD0005
Poles	06
Leads	9#18
Proprietary	False
Created date	02-21-2023

Heater Indicator	No Heater
High Voltage Full Load Amps	2.0 a
Insulation Class	H
Inverter Code	Not Inverter
KVA Code	N
Lifting Lugs	No Lifting Lugs
Locked Bearing Indicator	Locked Bearing
Motor Lead Quantity/Wire Size	9 @ 18 AWG
Motor Lead Termination	Flying Leads
Motor Standards	NEMA
Motor Type	3544M
Mounting Arrangement	F1
Number of Poles	6
Overall Length	14.22 IN
Power Factor	57
Product Family	Wash Down All Stainless Steel
Pulley End Bearing Type	Sealed Bearing
Pulley Face Code	C-Face
Pulley Shaft Indicator	Standard
Rodent Screen	None
Service Factor	1.15
Shaft Diameter	0.625 IN
Shaft Ground Indicator	No Shaft Grounding
Shaft Rotation	Reversible
Shaft Slinger Indicator	No Slinger
Speed	1180 rpm
Speed Code	Single Speed
Starting Method	Direct on line
Thermal Device - Bearing	None
Thermal Device - Winding	None
Vibration Sensor Indicator	No Vibration Sensor
Winding Thermal 1	None
Winding Thermal 2	None

Nameplate

NP1953A01									
CAT.NO.	CESSWDNM3556-H								
SPEC.	35E6083G332								
HP	1								
VOLTS	230/460								
AMP	4/2								
RPM	1180								
FRAME	56HC		HZ	60		PH	3		
SER.F.	1.15	CODE	N	DES	B	CLASS	H		
NEMA-NOM-EFF	82.5	PF	57						
RATING	40C AMB-CONT								
CC	010A								
DE	6205	ODE	6203						
ENCL	TENV	SN							
	SFA 3.5/1.75								

AC Induction Motor Performance Data

Record # 65540

Typical performance - not guaranteed values

Winding: 35WGL645-R001		Type: 3544M	Enclosure: TENV	
Nameplate Data			460 V, 60 Hz: High Voltage Connection	
Rated Output (HP)	1	Full Load Torque	4.534 LB-FT	
Volts	230/460	Start Configuration	direct on line	
Full Load Amps	3.4/1.7	Breakdown Torque	15.7 LB-FT	
R.P.M.	1155	Pull-up Torque	11.5 LB-FT	
Hz	60	Locked-rotor Torque	12 LB-FT	
NEMA Design Code	B	Starting Current	10.8 A	
Service Factor (S.F.)	1.15	No-load Current	1.08 A	
NEMA Nom. Eff.	84	Line-line Res. @ 25°C	13.501 Ω	
Rating - Duty	40C AMB-CONT	Temp. Rise @ Rated Load	82°C	
S.F. Amps		Temp. Rise @ S.F. Load	100°C	
		Locked-rotor Power Factor	36.7	

Load Characteristics 460 V, 60 Hz, 1 HP

% of Rated Load	25	50	75	100	125	150	S.F.
Power Factor	28	46	58	66	72	75	70
Efficiency	74.1	82.5	84.4	84.3	83.1	81.2	83.6
Speed	1189.4	1178.9	1167.8	1155.1	1140.6	1123.6	1146
Line amperes	1.13	1.26	1.44	1.67	1.96	2.3	1.84

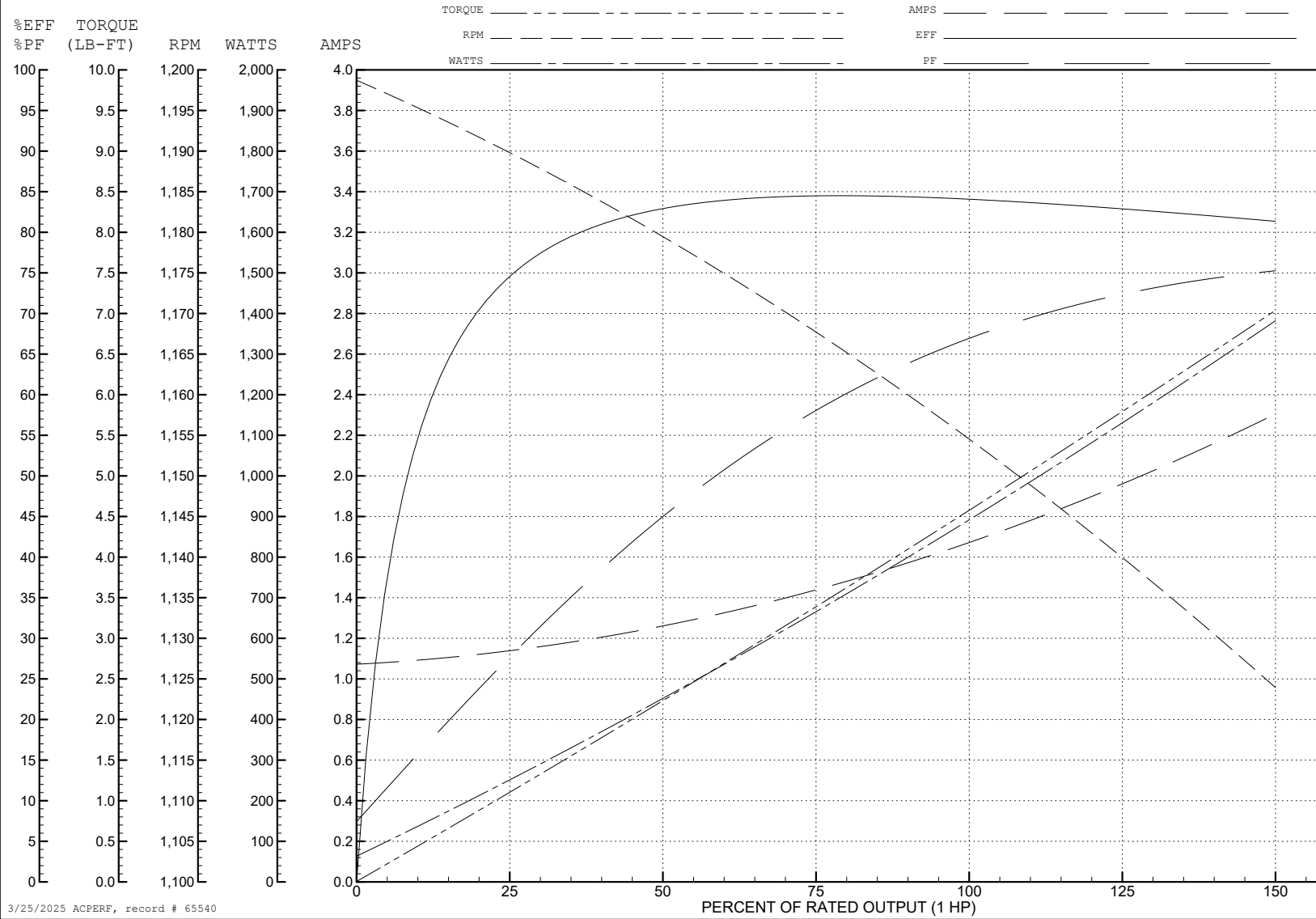
ABB Motors and Mechanical Inc.

WINDING # 35WGL645

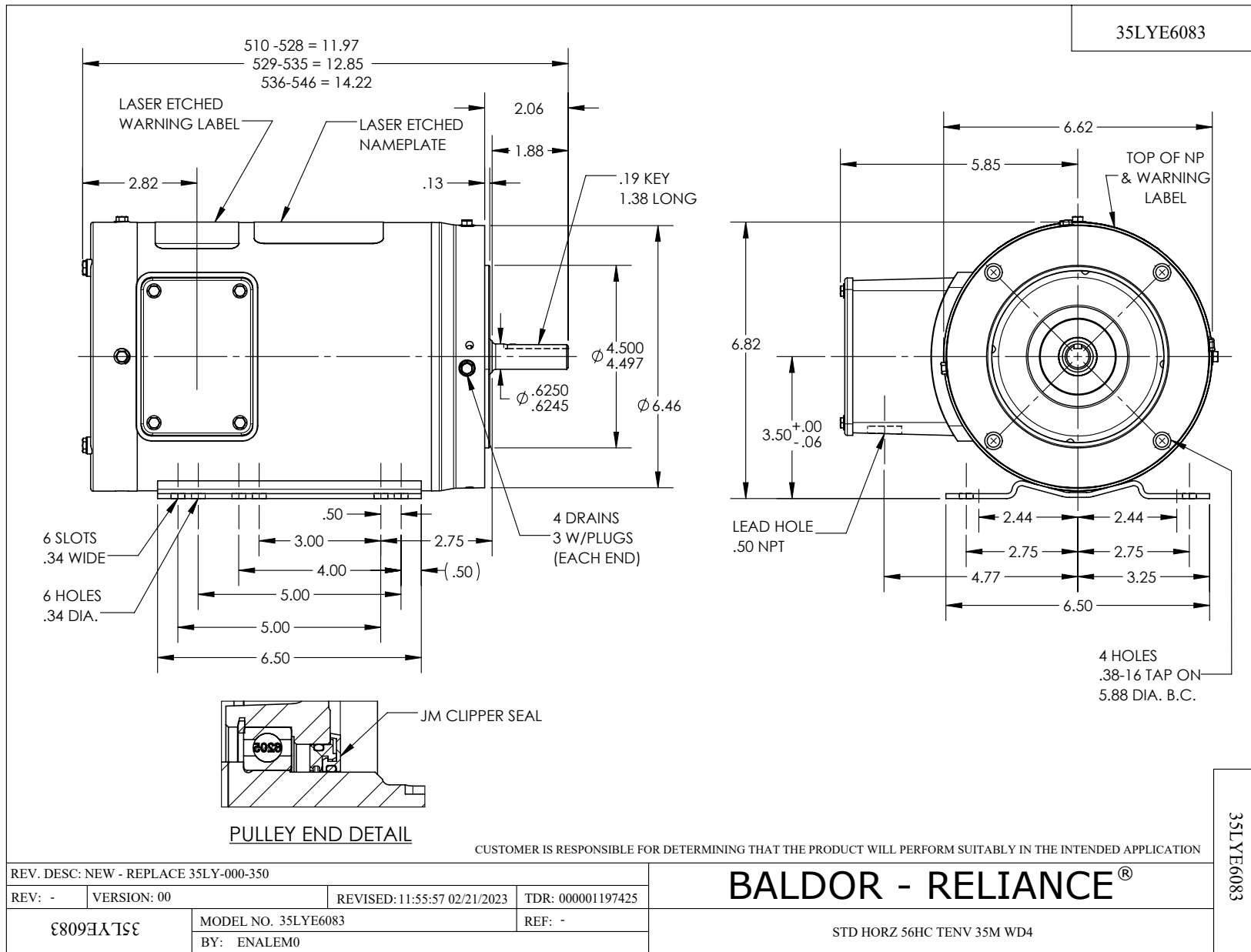
1 HP 3 PH 60 HZ 1155 RPM 460 V 3544M

Typical performance - not guaranteed values.

TORQUES (LB-FT): PO=15.7 PU=11.5 LR=12 LRA=10.8



3/25/2025 ACPERF, record # 65540



CD0005



LOW VOLTAGE (2Y)



LINE

HIGH VOLTAGE (1Y)



LINE

NOTES:

1. INTERCHANGE ANY TWO LINE LEADS TO REVERSE ROTATION.
2. OPTIONAL THERMOSTATS ARE PROVIDED WHEN SPECIFIED.
3. ACTUAL NUMBER OF INTERNAL PARALLEL CIRCUITS MAY BE A MULTIPLE OF THOSE SHOWN ABOVE.
4. LEAD COLORS ARE OPTIONAL. LEADS MUST ALWAYS BE NUMBERED AS SHOWN.

CD0005

REV. DESC: REVISE TO SHOW OPTIONAL COLORS			
REV. LTR: E	BY: JLP	REVISED: 01/19/99 10:15	TDR: 0171435
S00000		FILE: AAA00005140	MDL: -
		MTL: -	

BALDOR ELECTRIC Co.

3PH, DV, 9 LEADS