

BALDOR • RELIANCE

Customer information packet

CESSWDM41906T

20HP, 3525RPM, 3PH, 60HZ, 256TC, 3960M, TEFC, F

Class -

Division - Not Applicable

Specifications

Enclosure	TEFC
Frame	256TC
Frame Material	Stainless Steel
Frequency	60.00 Hz
Haz Area Division	Not Applicable
Motor Letter Type	Three Phase
Output @ Frequency	20.000 HP @ 60 HZ
Phase	3
Synchronous Speed @ Frequency	3600 RPM @ 60 HZ
Voltage @ Frequency	230.0 V @ 60 HZ 460.0 V @ 60 HZ
Agency Approvals	CSA UR
Ambient Temperature	40 °C
Auxillary Box	No Auxillary Box
Auxillary Box Lead Termination	None
Base Indicator	Rigid
Bearing Grease Type	Polyrex EM (-20F +300F)
Blower	None
Current @ Voltage	43.000 A @ 230.0 V 21.500 A @ 460.0 V
Design Code	A
Drip Cover	No Drip Cover
Duty Rating	CONT
Efficiency @ 100% Load	91.0 %
Electrically Isolated Bearing	Not Electrically Isolated
Feedback Device	NO FEEDBACK
Front Face Code	Standard
Front Shaft Indicator	None
Heater Indicator	No Heater
High Voltage Full Load Amps	21.5 a
Insulation Class	F

Part detail

Revision	AS
Type	AC
Mech. spec.	39E119
Base	
Status	PRD/A
Elec. spec.	39WGX632
Layout	39LYE119
Eff. date	08-02-2024
CD Diagram	CD0005
Poles	02
Leads	9#10
Proprietary	False
Created date	03-18-2008

Inverter Code	Inverter Ready
KVA Code	G
Lifting Lugs	Standard Lifting Lugs
Locked Bearing Indicator	Locked Bearing
Motor Lead Exit	Ko Box
Motor Lead Quantity/Wire Size	9 @ 10 AWG
Motor Lead Termination	Flying Leads
Motor Standards	NEMA
Motor Type	3960M
Mounting Arrangement	F1
Number of Poles	2
Overall Length	24.67 IN
Power Factor	93
Product Family	Wash Down All Stainless Steel
Pulley End Bearing Type	Sealed Bearing
Pulley Face Code	Standard
Pulley Shaft Indicator	Standard
Rodent Screen	None
Service Factor	1.15
Shaft Diameter	1.625 IN
Shaft Extension Location	Pulley End
Shaft Ground Indicator	No Shaft Grounding
Shaft Rotation	Reversible
Shaft Slinger Indicator	Shaft Slinger
Speed	3525 rpm
Speed Code	Single Speed
Starting Method	Direct on line
Thermal Device - Bearing	None
Thermal Device - Winding	None
Vibration Sensor Indicator	No Vibration Sensor
Winding Thermal 1	None
Winding Thermal 2	None

Nameplate

NP1953D01									
CAT.NO.	CESSWDM41906T								
SPEC.	39E119X632G1								
HP	20								
VOLTS	230/460								
AMP	43/21.5								
RPM	3525								
FRAME	256TC		HZ	60		PH	3		
SER.F.	1.00	CODE	G	DES	A	CLASS	F		
NEMA-NOM-EFF	91	PF	93						
RATING	40C AMB-CONT								
CC	010A	USABLE AT 208V	N/A						
DE	6309	ODE	6208						
ENCL	TEFC	SN							
	2:1 CT/10:1 VT								

AC Induction Motor Performance Data

Record # 26903

Typical performance - not guaranteed values

Winding: 39WGX632-R001		Type: 3960M		Enclosure: TEFC	
Nameplate Data			460 V, 60 Hz: High Voltage Connection		
Rated Output (HP)	20	Full Load Torque	29.6 LB-FT		
Volts	230/460	Start Configuration	direct on line		
Full Load Amps	43/21.5	Breakdown Torque	114 LB-FT		
R.P.M.	3525	Pull-up Torque	35.3 LB-FT		
Hz	60 Phase	3	Locked-rotor Torque	51 LB-FT	
NEMA Design Code	B KVA Code	G	Starting Current	152 A	
Service Factor (S.F.)		1.15	No-load Current	4.75 A	
NEMA Nom. Eff.	91 Power Factor	93	Line-line Res. @ 25°C	0.437 Ω	
Rating - Duty	40C AMB-CONT		Temp. Rise @ Rated Load	75°C	
S.F. Amps			Temp. Rise @ S.F. Load	97°C	
			Locked-rotor Power Factor	27	
			Rotor inertia	1.53 LB-FT ²	

Load Characteristics 460 V, 60 Hz, 20 HP

% of Rated Load	25	50	75	100	125	150	S.F.
Power Factor	71	88	92	93	93	92	93
Efficiency	91	93.5	93.3	92.5	91.2	89.7	91.7
Speed	3581	3562	3541	3519	3492	3465	3503
Line amperes	6.84	11.2	16.2	21.5	27.6	33.8	25.2

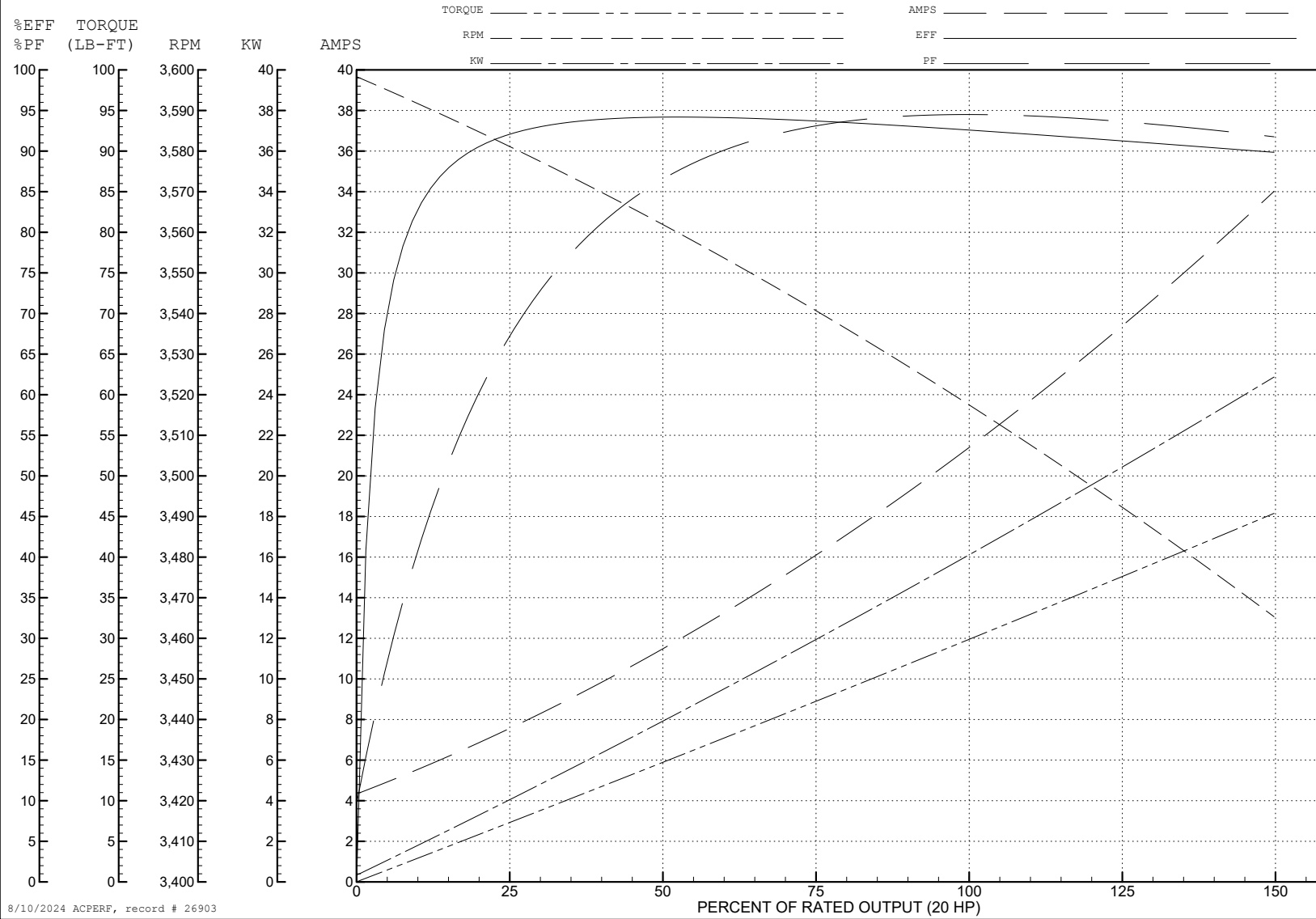
ABB Motors and Mechanical Inc.

WINDING # 39WGX632

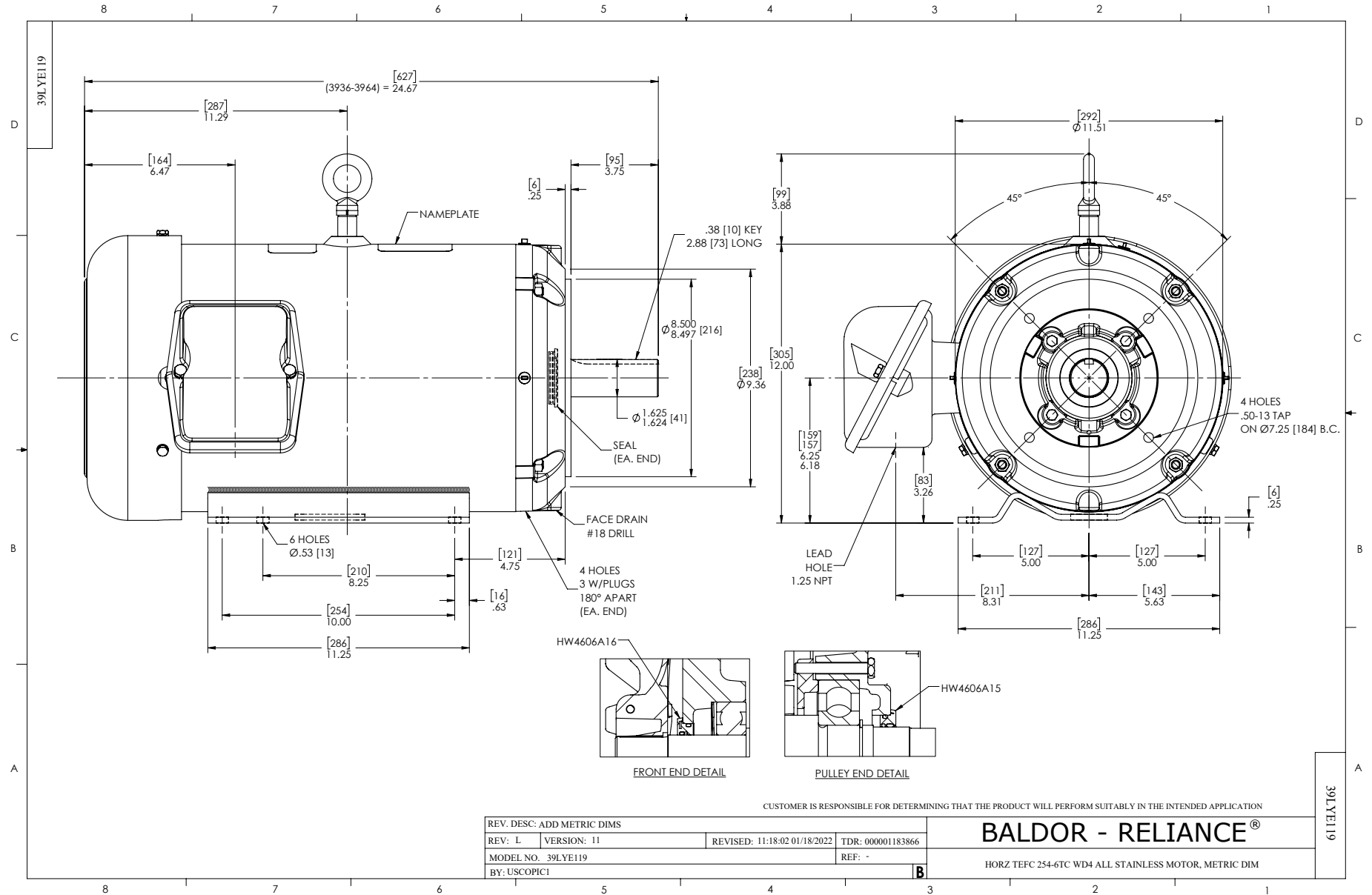
20 HP 3 PH 60 HZ 3525 RPM 460 V 3960M

Typical performance - not guaranteed values.

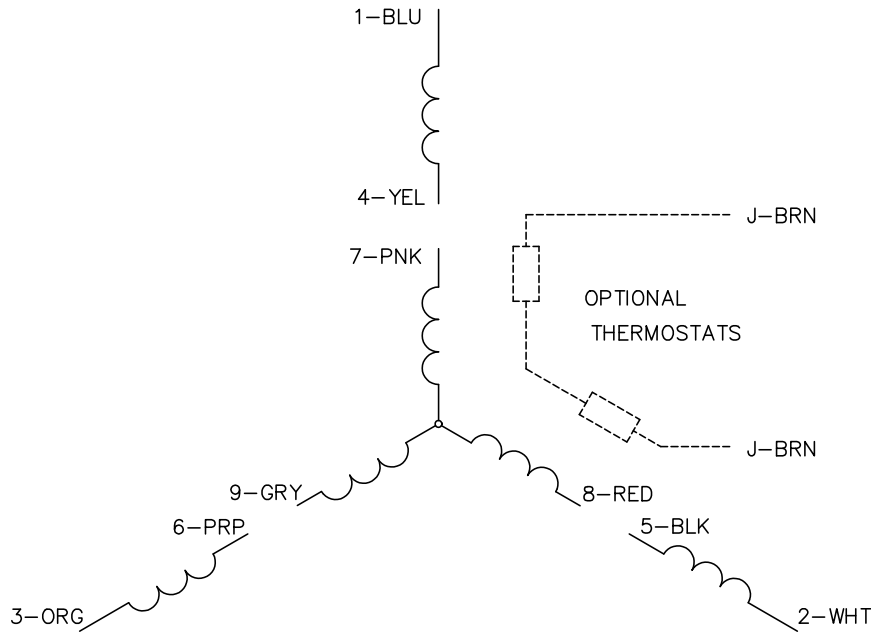
TORQUES (LB-FT): PO=114 PU=35.3 LR=51 LRA=152



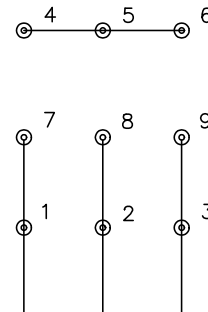
8/10/2024 ACPERF, record # 26903



CD0005

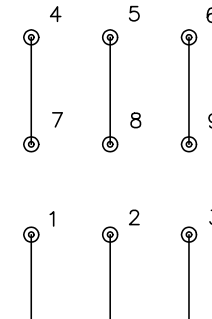


LOW VOLTAGE
(2Y)



LINE

HIGH VOLTAGE
(1Y)



LINE

NOTES:

1. INTERCHANGE ANY TWO LINE LEADS TO REVERSE ROTATION.
2. OPTIONAL THERMOSTATS ARE PROVIDED WHEN SPECIFIED.
3. ACTUAL NUMBER OF INTERNAL PARALLEL CIRCUITS MAY BE A MULTIPLE OF THOSE SHOWN ABOVE.
4. LEAD COLORS ARE OPTIONAL. LEADS MUST ALWAYS BE NUMBERED AS SHOWN.

CD0005

REV. DESC: REVISE TO SHOW OPTIONAL COLORS			
REV. LTR: E	BY: JLP	REVISED: 01/19/99 10:15	TDR: 0171435
S00000		FILE: AAA00005140	MDL: -
		MTL: -	

BALDOR ELECTRIC Co.

3PH, DV, 9 LEADS