



---

# Customer information packet

## CESSWDM3615T

5HP, 1750RPM, 3PH, 60HZ, 184TC, 3646M, TEFC, F1

Class - None

Division - Not Applicable

## Specifications

Enclosure	TEFC
Frame	184TC
Frame Material	Stainless Steel
Frequency	60.00 Hz
Haz Area Class and Group	None
Haz Area Division	Not Applicable
Motor Letter Type	Three Phase
Output @ Frequency	5.000 HP @ 60 HZ
Phase	3
Synchronous Speed @ Frequency	1800 RPM @ 60 HZ
Voltage @ Frequency	230.0 V @ 60 HZ 460.0 V @ 60 HZ
Ambient Temperature	40 °C
Auxillary Box	No Auxillary Box
Auxillary Box Lead Termination	None
Base Indicator	Rigid
Bearing Grease Type	Polyrex EM (-20F +300F)
Blower	None
Current @ Voltage	13.000 A @ 230.0 V 6.500 A @ 460.0 V
Design Code	B
Drip Cover	No Drip Cover
Duty Rating	CONT
Efficiency @ 100% Load	89.5 %
Electrically Isolated Bearing	Not Electrically Isolated
Feedback Device	NO FEEDBACK
Front Face Code	Standard
Front Shaft Indicator	None
Heater Indicator	No Heater
High Voltage Full Load Amps	6.5 a
Insulation Class	F
Inverter Code	Inverter Ready

## Part detail

Revision	AA
Type	AC
Mech. spec.	36L738
Base	
Status	PRD/A
Elec. spec.	36WGS719
Layout	36LYL738
Eff. date	02-14-2025
CD Diagram	CD0005
Poles	04
Leads	9#16
Proprietary	False
Created date	04-13-2011

<b>KVA Code</b>	J
<b>Lifting Lugs</b>	No Lifting Lugs
<b>Locked Bearing Indicator</b>	Locked Bearing
<b>Motor Lead Exit</b>	Ko Box
<b>Motor Lead Quantity/Wire Size</b>	9 @ 16 AWG
<b>Motor Lead Termination</b>	Flying Leads
<b>Motor Standards</b>	NEMA
<b>Motor Type</b>	3646M
<b>Mounting Arrangement</b>	F1
<b>Number of Poles</b>	4
<b>Overall Length</b>	18.32 IN
<b>Power Factor</b>	81
<b>Product Family</b>	Wash Down All Stainless Steel
<b>Pulley End Bearing Type</b>	Ball
<b>Pulley Face Code</b>	C-Face
<b>Pulley Shaft Indicator</b>	Standard
<b>Rodent Screen</b>	None
<b>Service Factor</b>	1.15
<b>Shaft Diameter</b>	1.125 IN
<b>Shaft Extension Location</b>	Pulley End
<b>Shaft Ground Indicator</b>	No Shaft Grounding
<b>Shaft Rotation</b>	Reversible
<b>Shaft Slinger Indicator</b>	No Slinger
<b>Speed</b>	1750 rpm
<b>Speed Code</b>	Single Speed
<b>Starting Method</b>	Direct on line
<b>Thermal Device - Bearing</b>	None
<b>Thermal Device - Winding</b>	None
<b>Vibration Sensor Indicator</b>	No Vibration Sensor
<b>Winding Thermal 1</b>	None
<b>Winding Thermal 2</b>	None

**Nameplate**

<b>NP1953B01</b>									
<b>CAT.NO.</b>	CESSWDM3615T								
<b>SPEC.</b>	36L738S719G1								
<b>HP</b>	5								
<b>VOLTS</b>	230/460								
<b>AMP</b>	13/6.5								
<b>RPM</b>	1750								
<b>FRAME</b>	184TC		<b>HZ</b>	60		<b>PH</b>	3		
<b>SER.F.</b>	1.15	<b>CODE</b>	J	<b>DES</b>	B	<b>CLASS</b>	F		
<b>NEMA-NOM-EFF</b>	89.5	<b>PF</b>	81						
<b>RATING</b>	40C AMB-CONT								
<b>CC</b>	010A	<b>USABLE AT 208V</b>	N/A						
<b>DE</b>	6206	<b>ODE</b>	6205						
<b>ENCL</b>	TEFC	<b>SN</b>							
	4:1CT 20:1VT								

**AC Induction Motor Performance Data**

Record # 36851

Typical performance - not guaranteed values

<b>Winding:</b> 36WGS719-R001		<b>Type:</b> 3646M		<b>Enclosure:</b> TEFC	
<b>Nameplate Data</b>			<b>460 V, 60 Hz: High Voltage Connection</b>		
<b>Rated Output (HP)</b>	5	<b>Full Load Torque</b>	15 LB-FT		
<b>Volts</b>	230/460	<b>Start Configuration</b>	direct on line		
<b>Full Load Amps</b>	13/6.5	<b>Breakdown Torque</b>	49.7 LB-FT		
<b>R.P.M.</b>	1750	<b>Pull-up Torque</b>	27.7 LB-FT		
<b>Hz</b>	60 <b>Phase</b>	3	<b>Locked-rotor Torque</b>	32.3 LB-FT	
<b>NEMA Design Code</b>	<b>B KVA Code</b>	J	<b>Starting Current</b>	48.3 A	
<b>Service Factor (S.F.)</b>		1.15	<b>No-load Current</b>	2.91 A	
<b>NEMA Nom. Eff.</b>	89.5	<b>Power Factor</b>	81	<b>Line-line Res. @ 25°C</b>	2.3457 Ω
<b>Rating - Duty</b>		40C AMB-CONT	<b>Temp. Rise @ Rated Load</b>	87°C	
<b>S.F. Amps</b>			<b>Temp. Rise @ S.F. Load</b>	109°C	

**Load Characteristics 460 V, 60 Hz, 5 HP**

<b>% of Rated Load</b>	<b>25</b>	<b>50</b>	<b>75</b>	<b>100</b>	<b>125</b>	<b>150</b>	<b>S.F.</b>
<b>Power Factor</b>	42	64	75	81	83	84	82
<b>Efficiency</b>	86.3	90.3	90.6	89.8	88.4	86.5	89
<b>Speed</b>	1788.5	1776.4	1763.2	1748.5	1732.5	1714.2	1739
<b>Line amperes</b>	3.26	4.07	5.17	6.44	7.96	9.65	7.35

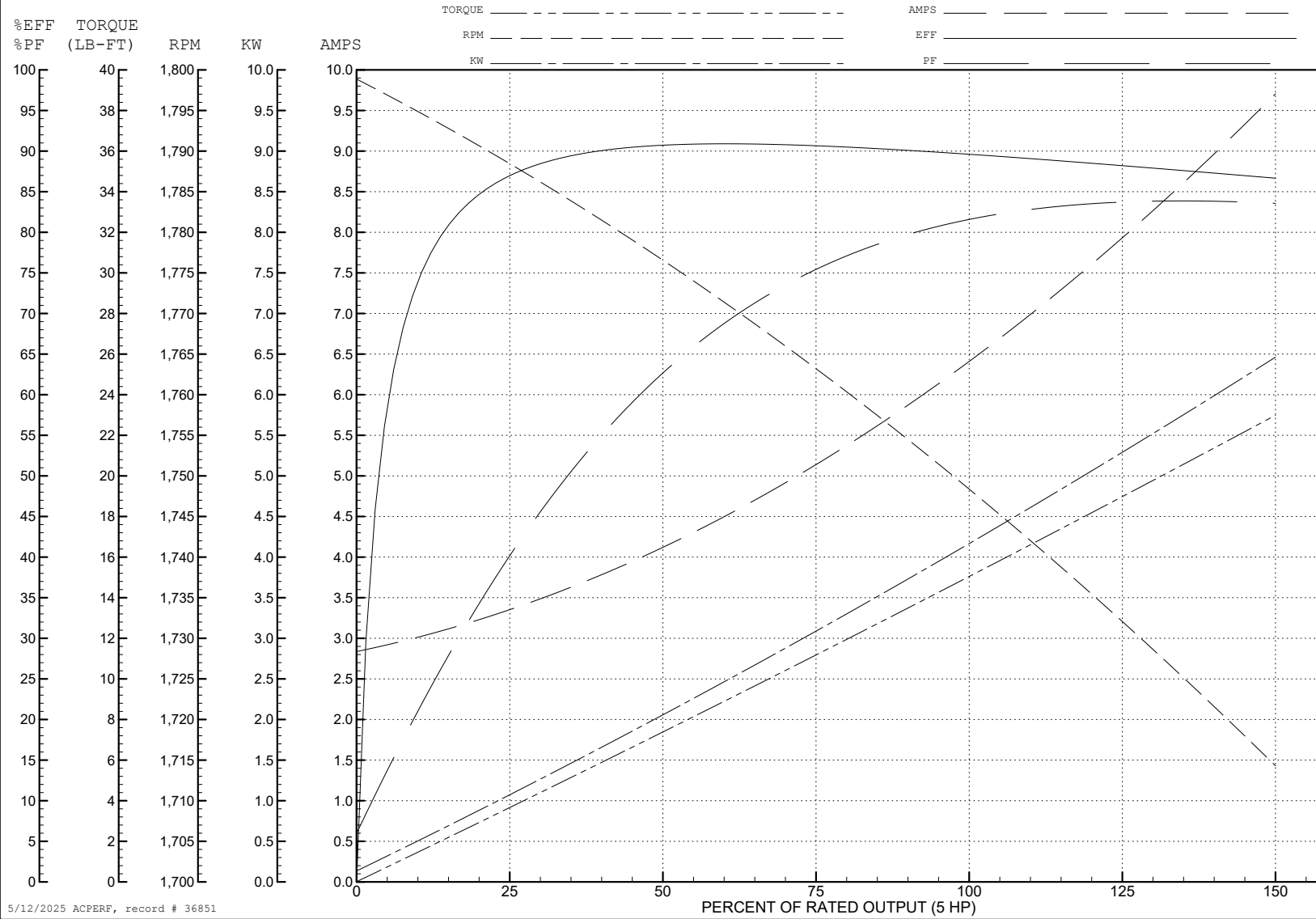
ABB Motors and Mechanical Inc.

WINDING # 36WGS719

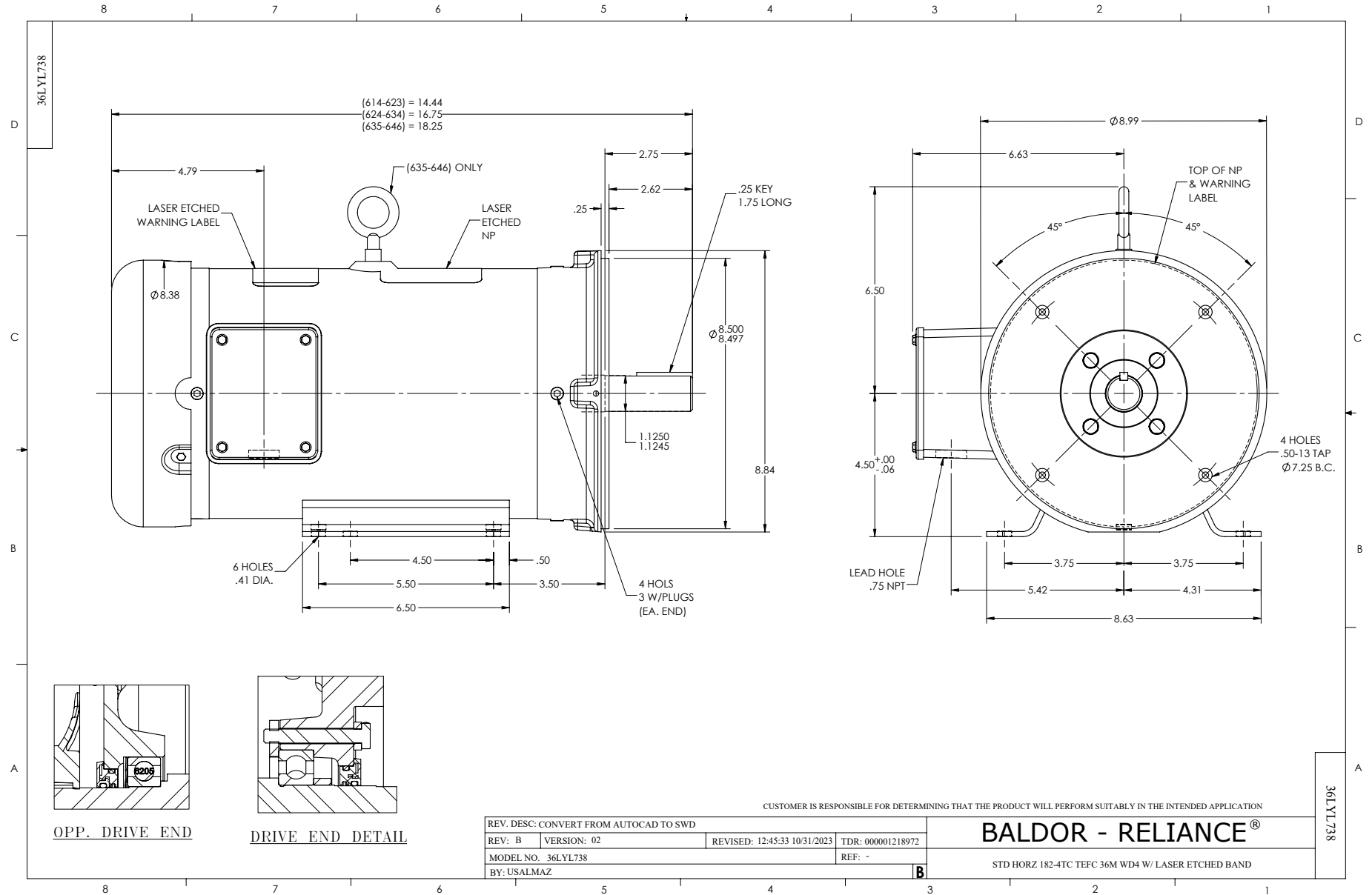
5 HP 3 PH 60 HZ 1750 RPM 460 V 3646M

Typical performance - not guaranteed values.

TORQUES (LB-FT): PO=49.7 PU=27.7 LR=32.3 LRA=48.3



5/12/2025 ACPERF, record # 36851



CD0005



LOW VOLTAGE  
(2Y)



LINE

HIGH VOLTAGE  
(1Y)



LINE

NOTES:

1. INTERCHANGE ANY TWO LINE LEADS TO REVERSE ROTATION.
2. OPTIONAL THERMOSTATS ARE PROVIDED WHEN SPECIFIED.
3. ACTUAL NUMBER OF INTERNAL PARALLEL CIRCUITS MAY BE A MULTIPLE OF THOSE SHOWN ABOVE.
4. LEAD COLORS ARE OPTIONAL. LEADS MUST ALWAYS BE NUMBERED AS SHOWN.

CD0005

REV. DESC: REVISE TO SHOW OPTIONAL COLORS			
REV. LTR: E	BY: JLP	REVISED: 01/19/99 10:15	TDR: 0171435
S00000		FILE: AAA00005140	MDL: -
		MTL: -	

**BALDOR ELECTRIC Co.**

3PH, DV, 9 LEADS