



Customer information packet

CESSWDM3610T

3HP, 3500RPM, 3PH, 60HZ, 182TC, 3624M, TEFC, F1

Class - None

Division - Not Applicable

Specifications

Enclosure	TEFC
Frame	182TC
Frame Material	Stainless Steel
Frequency	60.00 Hz
Haz Area Class and Group	None
Haz Area Division	Not Applicable
Motor Letter Type	Three Phase
Output @ Frequency	3.000 HP @ 60 HZ
Phase	3
Synchronous Speed @ Frequency	3600 RPM @ 60 HZ
Voltage @ Frequency	230.0 V @ 60 HZ 460.0 V @ 60 HZ
Agency Approvals	CSA UR
Ambient Temperature	40 °C
Auxillary Box	No Auxillary Box
Auxillary Box Lead Termination	None
Base Indicator	Rigid
Bearing Grease Type	Polyrex EM (-20F +300F)
Blower	None
Current @ Voltage	7.900 A @ 208.0 V 7.400 A @ 230.0 V 3.700 A @ 460.0 V
Design Code	A
Drip Cover	No Drip Cover
Duty Rating	CONT
Efficiency @ 100% Load	88.5 %
Electrically Isolated Bearing	Not Electrically Isolated
Feedback Device	NO FEEDBACK
Front Face Code	Standard
Front Shaft Indicator	None
Heater Indicator	No Heater

Part detail

Revision	AC
Type	AC
Mech. spec.	36L738
Base	
Status	PRD/A
Elec. spec.	36WGT861
Layout	36LYL738
Eff. date	02-19-2024
CD Diagram	CD0005
Poles	02
Leads	9#16
Proprietary	False
Created date	02-15-2010

High Voltage Full Load Amps	3.7 a
Insulation Class	F
Inverter Code	Inverter Ready
KVA Code	M
Lifting Lugs	No Lifting Lugs
Locked Bearing Indicator	Locked Bearing
Motor Lead Exit	Ko Box
Motor Lead Quantity/Wire Size	9 @ 16 AWG
Motor Lead Termination	Flying Leads
Motor Standards	NEMA
Motor Type	3624M
Mounting Arrangement	F1
Number of Poles	2
Overall Length	16.82 IN
Power Factor	87
Product Family	Wash Down All Stainless Steel
Pulley End Bearing Type	Ball
Pulley Face Code	C-Face
Pulley Shaft Indicator	Standard
Rodent Screen	None
Service Factor	1.15
Shaft Diameter	1.125 IN
Shaft Extension Location	Pulley End
Shaft Ground Indicator	No Shaft Grounding
Shaft Rotation	Reversible
Shaft Slinger Indicator	No Slinger
Speed	3500 rpm
Speed Code	Single Speed
Starting Method	Direct on line
Thermal Device - Bearing	None
Thermal Device - Winding	None
Vibration Sensor Indicator	No Vibration Sensor
Winding Thermal 1	None
Winding Thermal 2	None

Nameplate**NP1951B01**

CAT.NO.	CESSWDM3610T									
SPEC.	36L738T861G1									
HP	3									
VOLTS	230/460									
AMP	7.4/3.7									
RPM	3500									
FRAME	182TC		HZ	60		PH	3			
SER.F.	1.15	CODE	M	DES	A	CLASS	F			
NEMA-NOM-EFF	88.5	PF	87							
RATING	40C AMB-CONT									
CC	010A									
DE	6206	ODE	6205							
ENCL	TEFC	SN								
	4:1CT 20:1VT									

AC Induction Motor Performance Data

Record # 57423

Typical performance - not guaranteed values

Winding: 36WGT861-R028		Type: 3624M		Enclosure: TEFC	
Nameplate Data			460 V, 60 Hz: High Voltage Connection		
Rated Output (HP)		3	Full Load Torque		4.6 LB-FT
Volts		230/460	Start Configuration		direct on line
Full Load Amps		7.4/3.7	Breakdown Torque		29.8 LB-FT
R.P.M.		3500	Pull-up Torque		16.5 LB-FT
Hz	60 Phase	3	Locked-rotor Torque		17.7 LB-FT
NEMA Design Code	A KVA Code	M	Starting Current		37.7 A
Service Factor (S.F.)		1.15	No-load Current		1.27 A
NEMA Nom. Eff.	88.5 Power Factor	87	Line-line Res. @ 25°C		3.35 Ω
Rating - Duty		40C AMB-CONT	Temp. Rise @ Rated Load		40°C
S.F. Amps			Temp. Rise @ S.F. Load		48°C
			Locked-rotor Power Factor		45.3
			Rotor inertia		0.107 LB-FT ²

Load Characteristics 460 V, 60 Hz, 3 HP

% of Rated Load	25	50	75	100	125	150	S.F.
Power Factor	57	77	86	91	93	95	92
Efficiency	82.8	88.1	89.6	89.8	89	87.8	89.3
Speed	3575	3551	3526	3501	3473	3445	3484
Line amperes	1.58	2.15	2.82	3.53	4.32	5.12	4

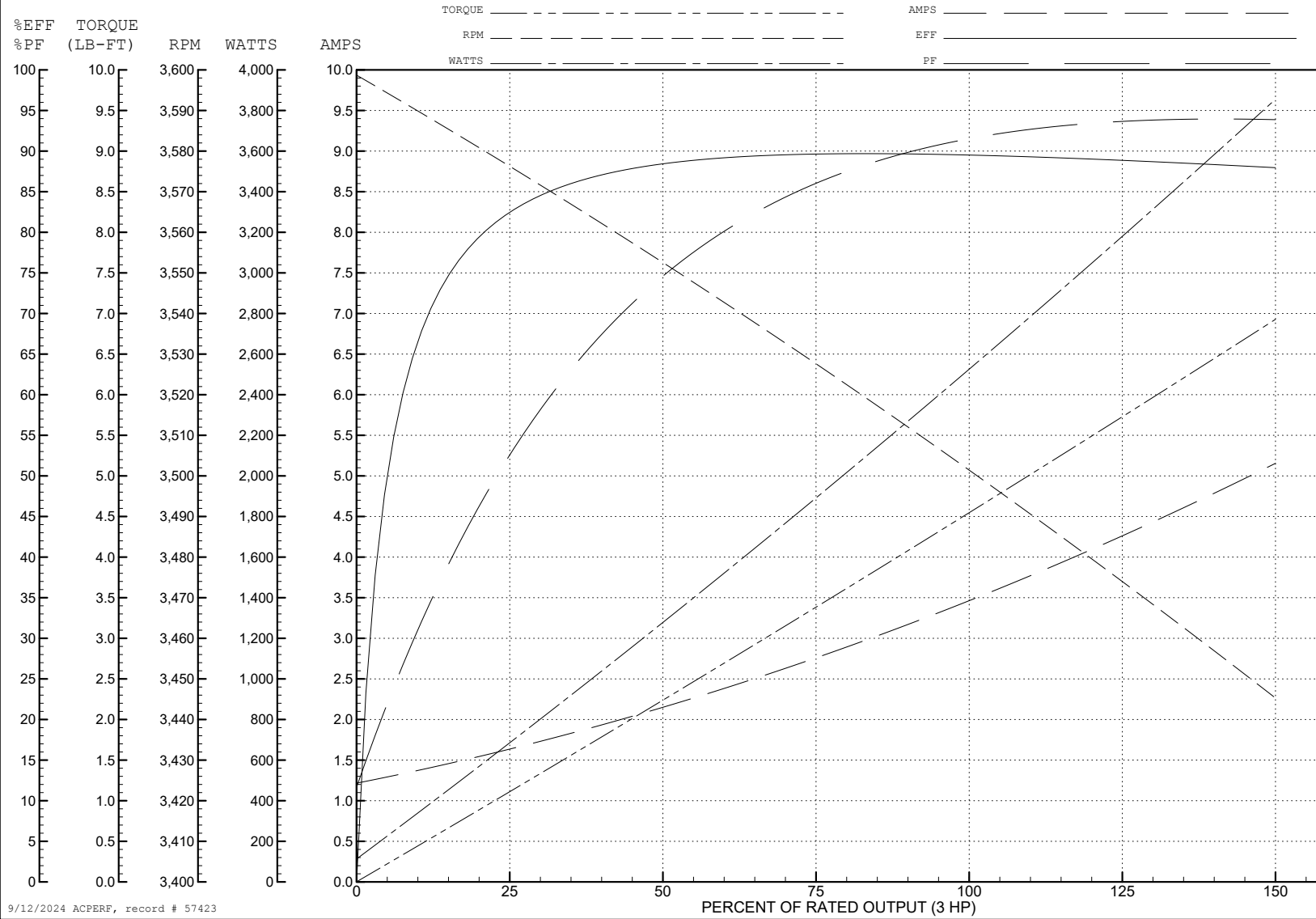
ABB Motors and Mechanical Inc.

WINDING # 36WGT861

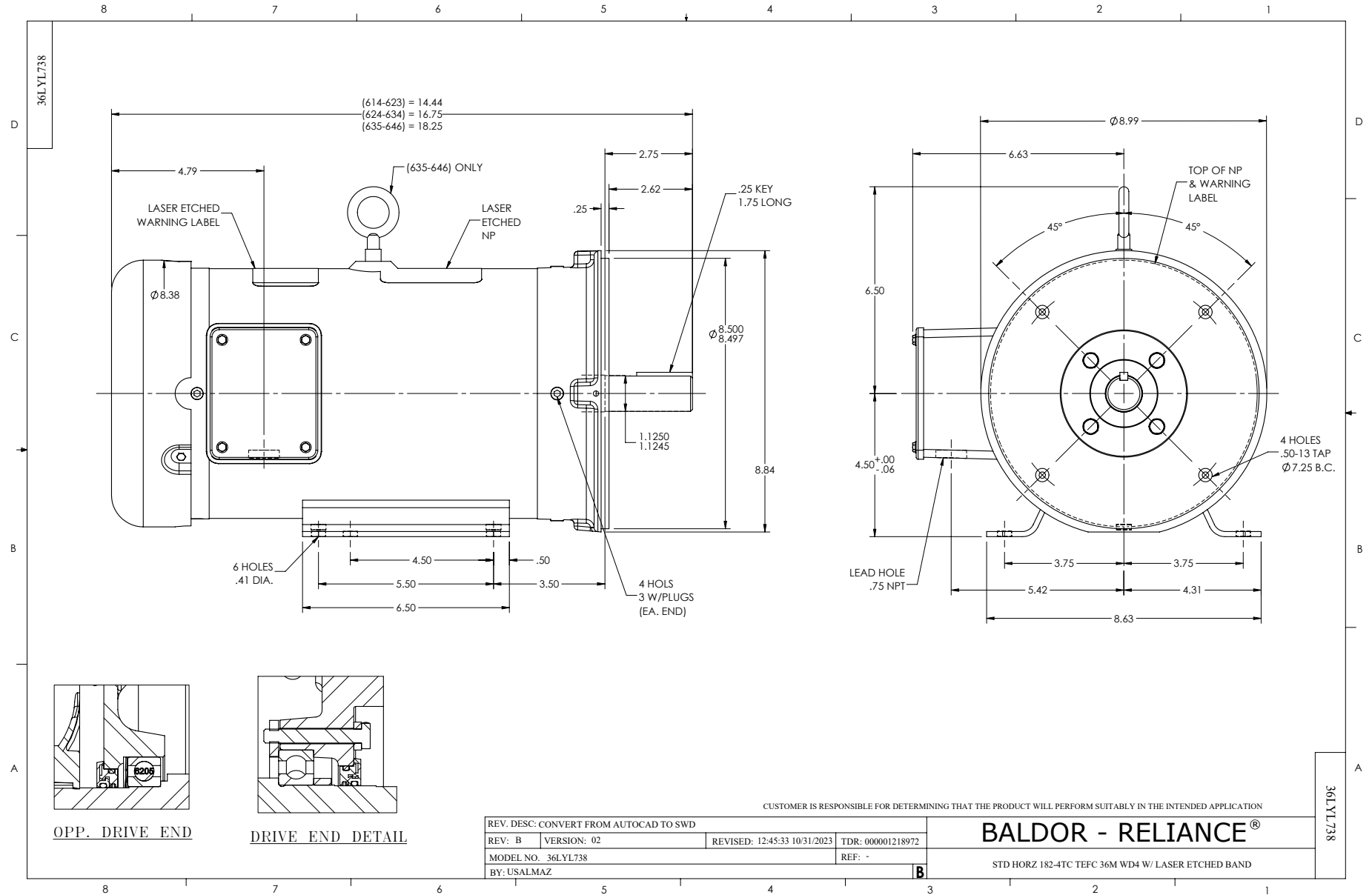
Typical performance - not guaranteed values.

3 HP 3 PH 60 HZ 3500 RPM 460 V 3624M

TORQUES (LB-FT): PO=29.8 PU=16.5 LR=17.7 LRA=37.7



9/12/2024 ACPERF, record # 57423



CD0005

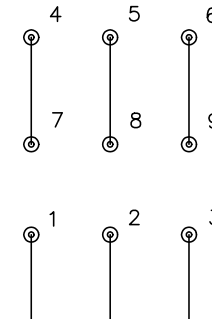


LOW VOLTAGE
(2Y)



LINE

HIGH VOLTAGE
(1Y)



LINE

NOTES:

1. INTERCHANGE ANY TWO LINE LEADS TO REVERSE ROTATION.
2. OPTIONAL THERMOSTATS ARE PROVIDED WHEN SPECIFIED.
3. ACTUAL NUMBER OF INTERNAL PARALLEL CIRCUITS MAY BE A MULTIPLE OF THOSE SHOWN ABOVE.
4. LEAD COLORS ARE OPTIONAL. LEADS MUST ALWAYS BE NUMBERED AS SHOWN.

CD0005

REV. DESC: REVISE TO SHOW OPTIONAL COLORS			
REV. LTR: E	BY: JLP	REVISED: 01/19/99 10:15	TDR: 0171435
S00000		FILE: AAA00005140	MDL: -
		MTL: -	

BALDOR ELECTRIC Co.

3PH, DV, 9 LEADS