



Customer information packet

CESSWDM3555T

2HP, 3450RPM, 3PH, 60HZ, 145TC, 3532M, TEFC, F1

Class - None

Division - Not Applicable

Specifications

| | |
|--------------------------------|---|
| Enclosure | TEFC |
| Frame | 145TC |
| Frame Material | Stainless Steel |
| Frequency | 60.00 Hz |
| Haz Area Class and Group | None |
| Haz Area Division | Not Applicable |
| Motor Letter Type | Three Phase |
| Output @ Frequency | 2.000 HP @ 60 HZ |
| Phase | 3 |
| Synchronous Speed @ Frequency | 3600 RPM @ 60 HZ |
| Voltage @ Frequency | 460.0 V @ 60 HZ 230.0 V @ 60 HZ 208.0 V @ 60 HZ |
| Agency Approvals | CSA UR |
| Ambient Temperature | 40 °C |
| Auxiliary Box | NO AUXILLARY BOX |
| Auxiliary Box Lead Termination | None |
| Base Indicator | Rigid |
| Bearing Grease Type | Polyrex EM (-20F +300F) |
| Blower | None |
| Current @ Voltage | 5.400 A @ 208.0 V 5.000 A @ 230.0 V 2.500 A @ 460.0 V |
| Design Code | B |
| Drip Cover | No Drip Cover |
| Duty Rating | CONT |
| Efficiency @ 100% Load | 86.5 % |
| Electrically Isolated Bearing | Not Electrically Isolated |
| Feedback Device | NO FEEDBACK |
| Front Face Code | Standard |
| Front Shaft Indicator | None |

Part detail

| | |
|--------------|------------|
| Revision | P |
| Type | AC |
| Mech. spec. | 35VV818 |
| Base | |
| Status | PRD/A |
| Elec. spec. | 35WGR129 |
| Layout | 35LYVV818 |
| Eff. date | 06-14-2024 |
| CD Diagram | CD0005 |
| Poles | 02 |
| Leads | 9#18 |
| Proprietary | False |
| Created date | 01-01-0001 |

| | |
|-------------------------------|-------------------------------|
| Heater Indicator | No Heater |
| High Voltage Full Load Amps | 2.5 a |
| Insulation Class | F |
| Inverter Code | Inverter Ready |
| KVA Code | N |
| Lifting Lugs | No Lifting Lugs |
| Locked Bearing Indicator | Locked Bearing |
| Motor Lead Exit | Ko Box |
| Motor Lead Quantity/Wire Size | 9 @ 18 AWG |
| Motor Lead Termination | Flying Leads |
| Motor Standards | NEMA |
| Motor Type | 3532M |
| Mounting Arrangement | F1 |
| Number of Poles | 2 |
| Overall Length | 14.30 IN |
| Power Factor | 85 |
| Product Family | Wash Down All Stainless Steel |
| Pulley End Bearing Type | Sealed Bearing |
| Pulley Face Code | C-Face |
| Pulley Shaft Indicator | Standard |
| Rodent Screen | None |
| RoHS Status | ROHS COMPLIANT |
| Service Factor | 1.15 |
| Shaft Diameter | 0.875 IN |
| Shaft Extension Location | Pulley End |
| Shaft Ground Indicator | No Shaft Grounding |
| Shaft Rotation | Reversible |
| Shaft Slinger Indicator | No Slinger |
| Speed | 3450 rpm |
| Speed Code | Single Speed |
| Starting Method | Direct on line |
| Thermal Device - Bearing | None |
| Thermal Device - Winding | None |
| Vibration Sensor Indicator | No Vibration Sensor |

Winding Thermal 1

None

Winding Thermal 2

None

Nameplate

| NP1953A01 | | | | | | | | | |
|---------------------|---------------|-------------|-----------|------------|---|--------------|---|--|--|
| CAT.NO. | CESSWDM3555T | | | | | | | | |
| SPEC. | 35VV818R129G1 | | | | | | | | |
| HP | 2 | | | | | | | | |
| VOLTS | 208-230/460 | | | | | | | | |
| AMP | 5.4-5/2.5 | | | | | | | | |
| RPM | 3450 | | | | | | | | |
| FRAME | 145TC | | HZ | 60 | | PH | 3 | | |
| SER.F. | 1.15 | CODE | N | DES | B | CLASS | F | | |
| NEMA-NOM-EFF | 86.5 | PF | 85 | | | | | | |
| RATING | 40C AMB-CONT | | | | | | | | |
| CC | 010A | | | | | | | | |
| DE | 6205 | ODE | 6203 | | | | | | |
| ENCL | TEFC | SN | | | | | | | |
| | 4:1CT 20:1VT | | | | | | | | |

AC Induction Motor Performance Data

Record # 86132

Typical performance - not guaranteed values

| Winding: 35WGR129-R006 | | Type: 3532M | | Enclosure: TEFC | |
|-------------------------------|--------------------------|--------------------|---|------------------------|---------------------------|
| Nameplate Data | | | 460 V, 60 Hz: Single Voltage Motor | | |
| Rated Output (HP) | | 2 | Full Load Torque | | 2.99 LB-FT |
| Volts | | 208-230/460 | Start Configuration | | direct on line |
| Full Load Amps | | 5.4-5/2.5 | Breakdown Torque | | 15.9 LB-FT |
| R.P.M. | | 3450 | Pull-up Torque | | 9.04 LB-FT |
| Hz | 60 Phase | | Locked-rotor Torque | | 13.8 LB-FT |
| NEMA Design Code | B KVA Code | N | Starting Current | | 31 A |
| Service Factor (S.F.) | | 1.15 | No-load Current | | 1.13 A |
| NEMA Nom. Eff. | 86.5 Power Factor | | Line-line Res. @ 25°C | | 5.59 Ω |
| Rating - Duty | | 40C AMB-CONT | Temp. Rise @ Rated Load | | 51°C |
| S.F. Amps | | | Temp. Rise @ S.F. Load | | 59°C |
| | | | Locked-rotor Power Factor | | 47.5 |
| | | | Rotor inertia | | 0.0885 lb-ft ² |

Load Characteristics 460 V, 60 Hz, 2 HP

| % of Rated Load | 25 | 50 | 75 | 100 | 125 | 150 | S.F. |
|------------------------|-----------|-----------|-----------|------------|------------|------------|-------------|
| Power Factor | 48 | 70 | 80 | 86 | 89 | 91 | 89 |
| Efficiency | 75.8 | 84.8 | 86.4 | 87 | 86.5 | 85.7 | 86.6 |
| Speed | 3574 | 3549 | 3525 | 3500 | 3471 | 3441 | 3471 |
| Line amperes | 1.27 | 1.62 | 2.03 | 2.5 | 3.04 | 3.6 | 3.04 |

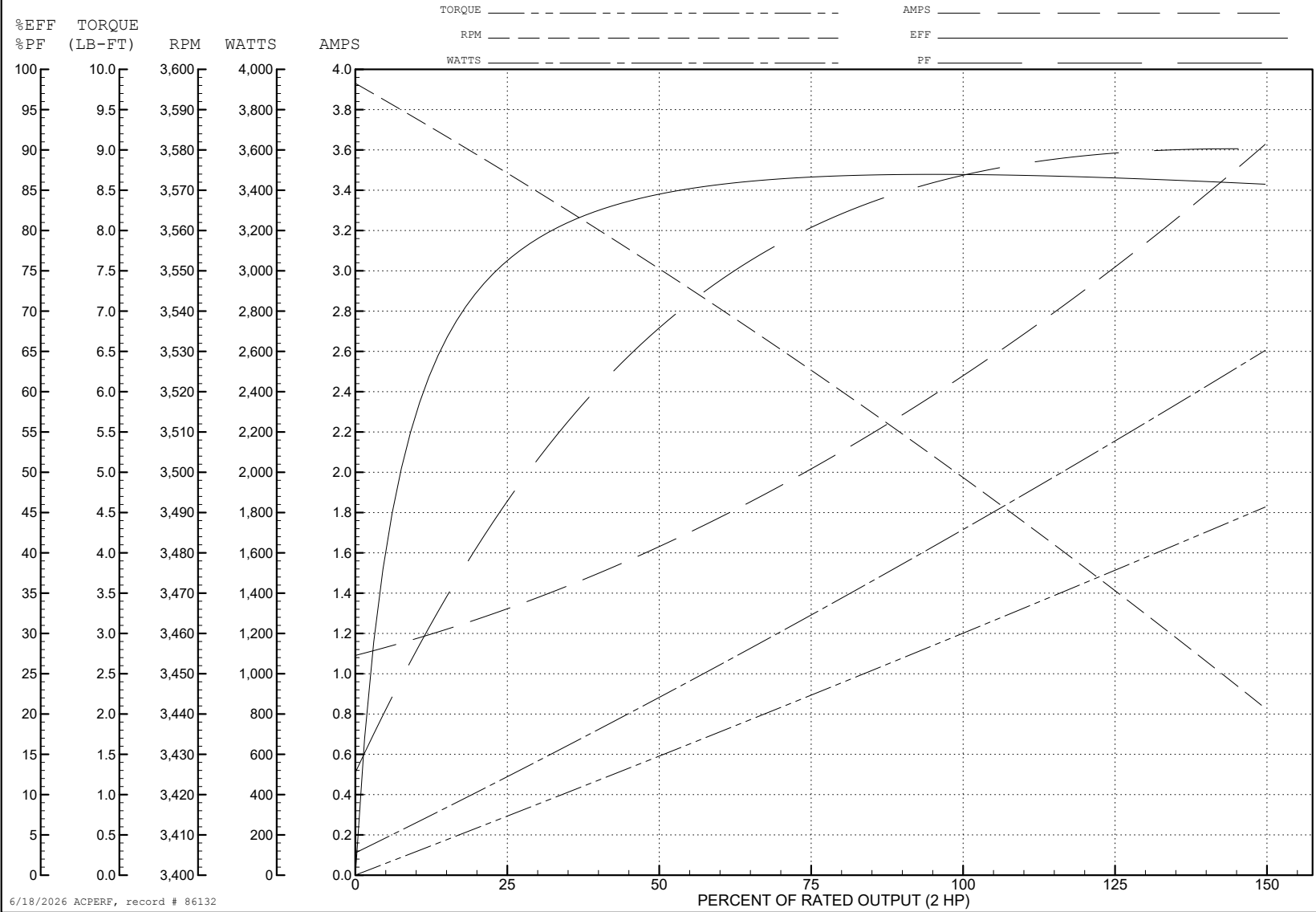
ABB Motors and Mechanical Inc.

WINDING # 35WGR129

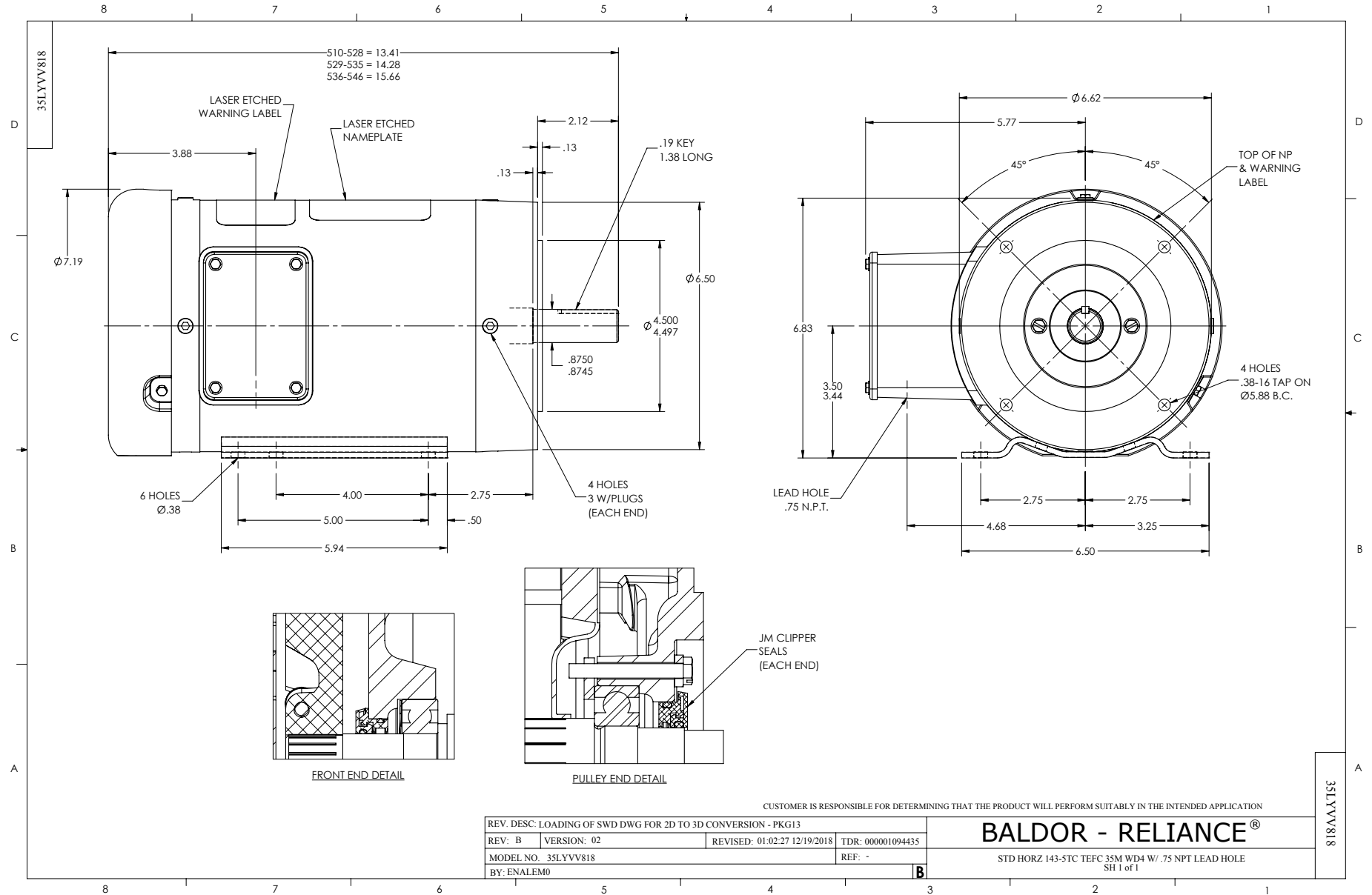
Typical performance - not guaranteed values.

2 HP 3 PH 60 HZ 3450 RPM 460 V 3532M

TORQUES (LB-FT): PO=15.9 PU=9.04 LR=13.8 LRA=31



6/18/2026 ACPERF, record # 86132



CD0005

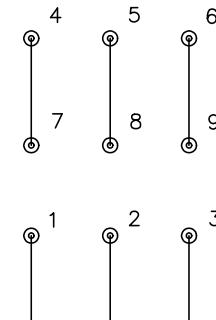


LOW VOLTAGE
(2Y)



LINE

HIGH VOLTAGE
(1Y)



LINE

NOTES:

1. INTERCHANGE ANY TWO LINE LEADS TO REVERSE ROTATION.
2. OPTIONAL THERMOSTATS ARE PROVIDED WHEN SPECIFIED.
3. ACTUAL NUMBER OF INTERNAL PARALLEL CIRCUITS MAY BE A MULTIPLE OF THOSE SHOWN ABOVE.
4. LEAD COLORS ARE OPTIONAL. LEADS MUST ALWAYS BE NUMBERED AS SHOWN.

| | | | |
|---|---------|-------------------------|--------------|
| REV. DESC: REVISE TO SHOW OPTIONAL COLORS | | | |
| REV. LTR: E | BY: JLP | REVISED: 01/19/99 10:15 | TDR: 0171435 |
| S00000 | | FILE: AAA00005140 | MDL: - |
| | | MTL: - | |

BALDOR ELECTRIC Co.

3PH, DV, 9 LEADS

CD0005