

# **ABB BALDOR RELIANCE III**

---

## **Customer information packet** CESSWDM3554

1.5HP, 1770RPM, 3PH, 60HZ, 56C, 3524M, TEFC, F1

Class - None

Division - Not Applicable

**Specifications**

|                                       |   |
|---------------------------------------|---|
| <b>Enclosure</b>                      | TEFC  |
| <b>Frame</b>                          | 56C   |
| <b>Frame Material</b>                 | Stainless Steel   |
| <b>Frequency</b>                      | 60.00 Hz  |
| <b>Haz Area Class and Group</b>       | None  |
| <b>Haz Area Division</b>              | Not Applicable  |
| <b>Motor Letter Type</b>              | Three Phase   |
| <b>Output @ Frequency</b>             | 1.500 HP @ 60 HZ  |
| <b>Phase</b>                          | 3   |
| <b>Synchronous Speed @ Frequency</b>  | 1800 RPM @ 60 HZ  |
| <b>Voltage @ Frequency</b>            | 230.0 V @ 60 HZ<br>460.0 V @ 60 HZ                          |
| <b>Agency Approvals</b>               | CSA EEV<br>NEMA PREMIUM<br>NEMA_PREMIUM<br>UR               |
| <b>Ambient Temperature</b>            | 40 °C   |
| <b>Auxiliary Box</b>                  | NO AUXILLARY BOX  |
| <b>Auxiliary Box Lead Termination</b> | None  |
| <b>Base Indicator</b>                 | Rigid   |
| <b>Bearing Grease Type</b>            | Polyrex EM (-20F +300F)                                     |
| <b>Blower</b>                         | None  |
| <b>Current @ Voltage</b>              | 4.640 A @ 208.0 V<br>4.600 A @ 230.0 V<br>2.300 A @ 460.0 V |
| <b>Design Code</b>                    | B   |
| <b>Drip Cover</b>                     | No Drip Cover   |
| <b>Duty Rating</b>                    | CONT  |
| <b>Efficiency @ 100% Load</b>         | 86.5 %  |
| <b>Electrically Isolated Bearing</b>  | Not Electrically Isolated                                   |
| <b>Feedback Device</b>                | NO FEEDBACK   |
| <b>Front Shaft Indicator</b>          | None  |

**Part Detail**

|                     |            |
|---------------------|------------|
| <b>Revision</b>     | D          |
| <b>Type</b>         | AC         |
| <b>Mech. spec.</b>  | 35V810     |
| <b>Base</b>         |            |
| <b>Status</b>       | PRD/A      |
| <b>Elec. spec.</b>  | 35WGL955   |
| <b>Layout</b>       | 35LYV810   |
| <b>Eff. date</b>    | 06-14-2024 |
| <b>CD Diagram</b>   | CD0005     |
| <b>Poles</b>        | 04         |
| <b>Leads</b>        | 9#18       |
| <b>Proprietary</b>  | False      |
| <b>Created date</b> | 01-10-2022 |

|                                      |                               |
|--------------------------------------|-------------------------------|
| <b>Heater Indicator</b>              | No Heater                     |
| <b>High Voltage Full Load Amps</b>   | 2.3 a                         |
| <b>Insulation Class</b>              | F                             |
| <b>Inverter Code</b>                 | Inverter Ready                |
| <b>KVA Code</b>                      | M                             |
| <b>Lifting Lugs</b>                  | No Lifting Lugs               |
| <b>Locked Bearing Indicator</b>      | Locked Bearing                |
| <b>Motor Lead Quantity/Wire Size</b> | 9 @ 18 AWG                    |
| <b>Motor Lead Termination</b>        | Flying Leads                  |
| <b>Motor Standards</b>               | NEMA                          |
| <b>Motor Type</b>                    | 3524M                         |
| <b>Mounting Arrangement</b>          | F1                            |
| <b>Number of Poles</b>               | 4                             |
| <b>Overall Length</b>                | 13.34 IN                      |
| <b>Power Factor</b>                  | 72                            |
| <b>Product Family</b>                | Wash Down All Stainless Steel |
| <b>Pulley End Bearing Type</b>       | Sealed Bearing                |
| <b>Pulley Face Code</b>              | C-Face                        |
| <b>Pulley Shaft Indicator</b>        | Standard                      |
| <b>Rodent Screen</b>                 | None                          |
| <b>Service Factor</b>                | 1.15                          |
| <b>Shaft Diameter</b>                | 0.625 IN                      |
| <b>Shaft Ground Indicator</b>        | No Shaft Grounding            |
| <b>Shaft Rotation</b>                | Reversible                    |
| <b>Shaft Slinger Indicator</b>       | No Slinger                    |
| <b>Speed</b>                         | 1770 rpm                      |
| <b>Speed Code</b>                    | Single Speed                  |
| <b>Starting Method</b>               | Direct on line                |
| <b>Thermal Device - Bearing</b>      | None                          |
| <b>Thermal Device - Winding</b>      | None                          |
| <b>Vibration Sensor Indicator</b>    | No Vibration Sensor           |
| <b>Winding Thermal 1</b>             | None                          |
| <b>Winding Thermal 2</b>             | None                          |

**Nameplate**

| <b>NP1953A01</b>    |               |             |           |            |   |              |   |  |  |
|---------------------|---------------|-------------|-----------|------------|---|--------------|---|--|--|
| <b>CAT.NO.</b>      | CESSWDM3554   |             |           |            |   |              |   |  |  |
| <b>SPEC.</b>        | 35V810L955G1  |             |           |            |   |              |   |  |  |
| <b>HP</b>           | 1.5           |             |           |            |   |              |   |  |  |
| <b>VOLTS</b>        | 230/460       |             |           |            |   |              |   |  |  |
| <b>AMP</b>          | 4.6/2.3       |             |           |            |   |              |   |  |  |
| <b>RPM</b>          | 1770          |             |           |            |   |              |   |  |  |
| <b>FRAME</b>        | 56C           |             | <b>HZ</b> | 60         |   | <b>PH</b>    | 3 |  |  |
| <b>SER.F.</b>       | 1.15          | <b>CODE</b> | M         | <b>DES</b> | B | <b>CLASS</b> | F |  |  |
| <b>NEMA-NOM-EFF</b> | 86.5          | <b>PF</b>   | 72        |            |   |              |   |  |  |
| <b>RATING</b>       | 40C AMB-CONT  |             |           |            |   |              |   |  |  |
| <b>CC</b>           | 010A          |             |           |            |   |              |   |  |  |
| <b>DE</b>           | 6205          | <b>ODE</b>  | 6203      |            |   |              |   |  |  |
| <b>ENCL</b>         | TEFC          | <b>SN</b>   |           |            |   |              |   |  |  |
|                     | SFA 4.72/2.36 |             |           |            |   |              |   |  |  |

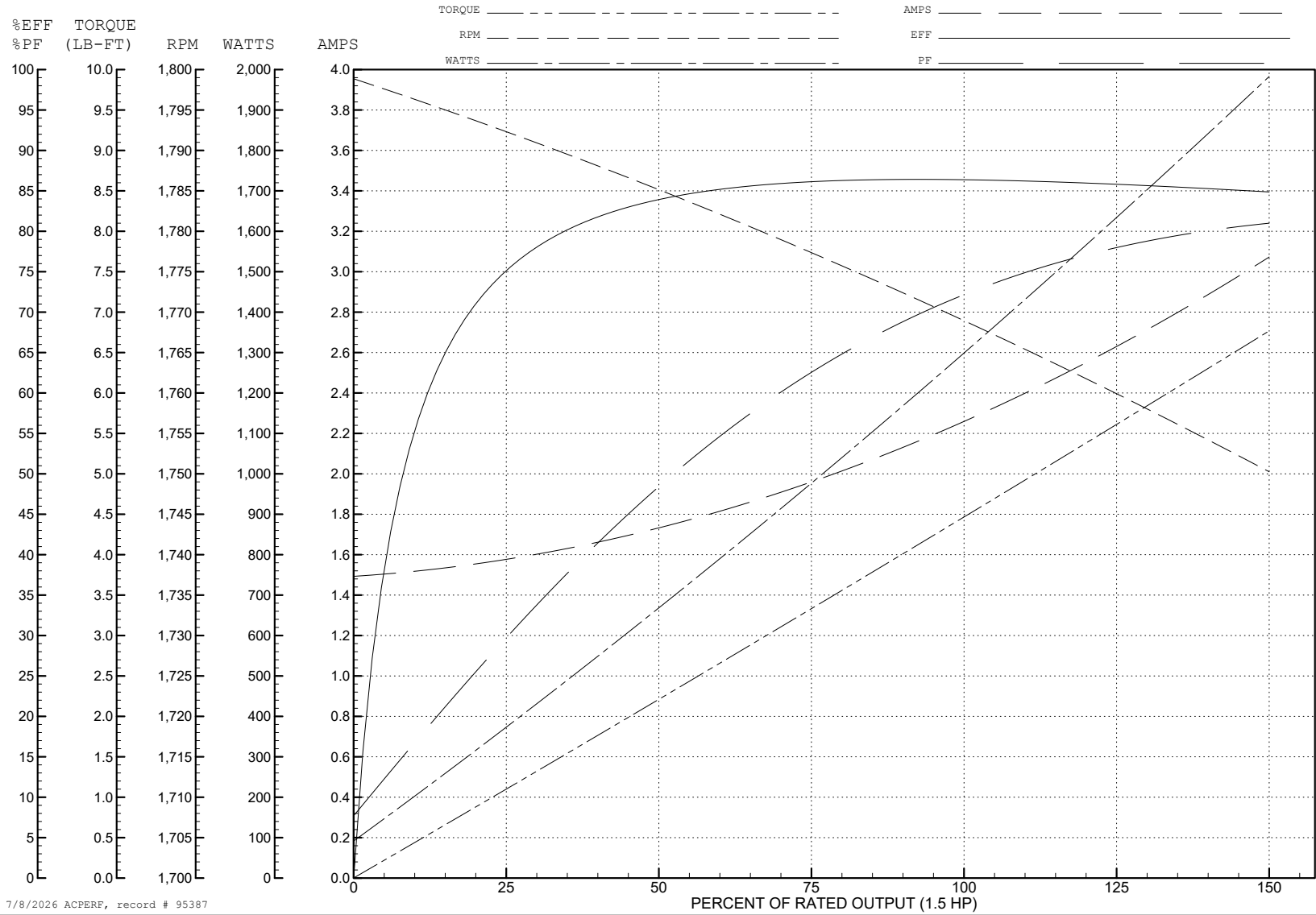
ABB Motors and Mechanical Inc.

WINDING # 35WGL955

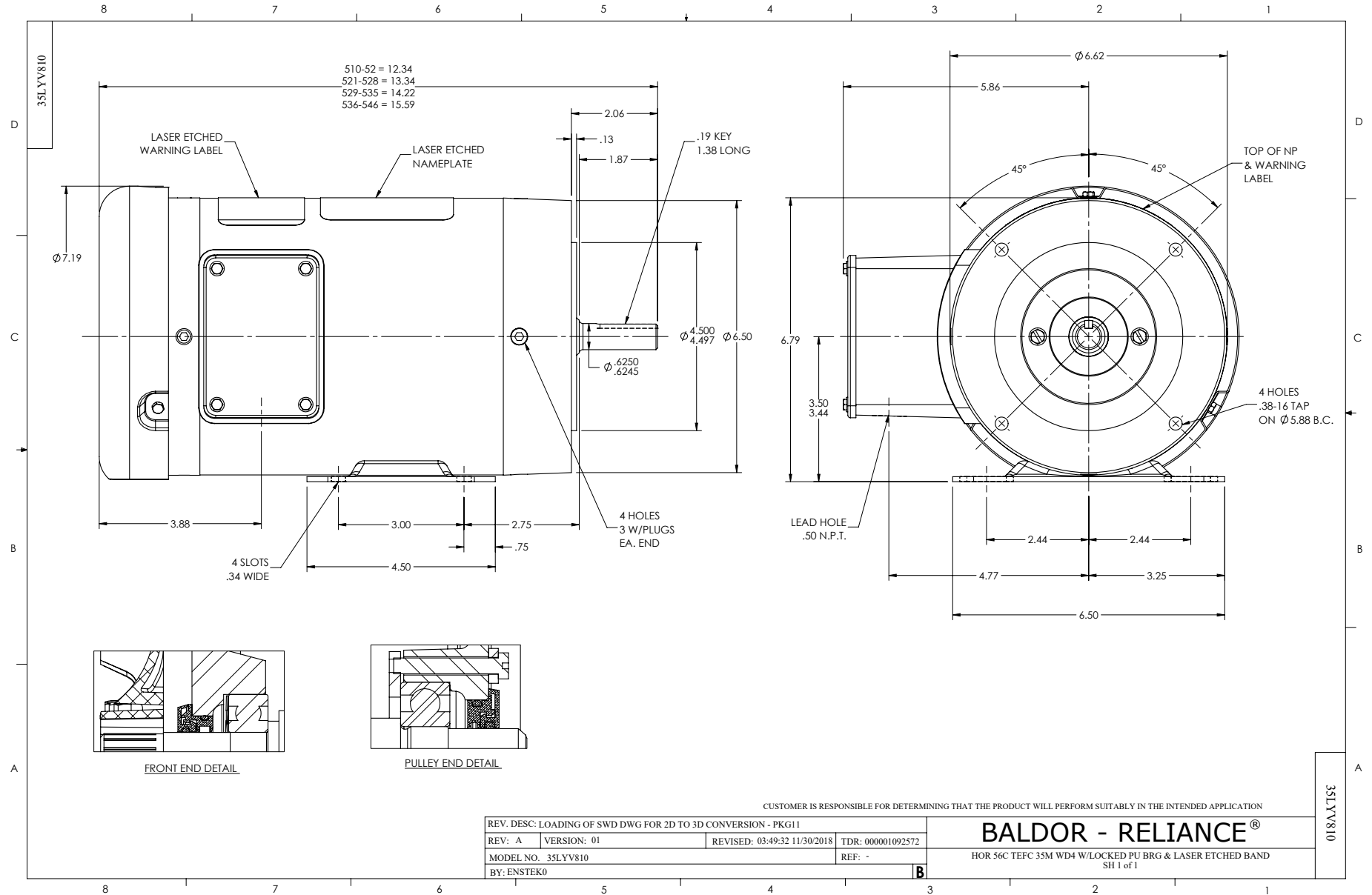
Typical performance - not guaranteed values.

1.5 HP 3 PH 60 HZ 1770 RPM 460 V 3524M

TORQUES (LB-FT): PO=18.8 PU=9.6 LR=12.6 LRA=19.7



7/8/2026 ACPERF, record # 95387



CD0005

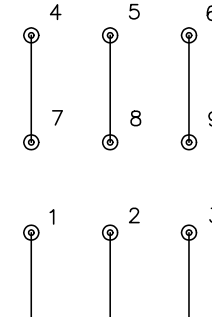


LOW VOLTAGE  
(2Y)



LINE

HIGH VOLTAGE  
(1Y)



LINE

NOTES:

1. INTERCHANGE ANY TWO LINE LEADS TO REVERSE ROTATION.
2. OPTIONAL THERMOSTATS ARE PROVIDED WHEN SPECIFIED.
3. ACTUAL NUMBER OF INTERNAL PARALLEL CIRCUITS MAY BE A MULTIPLE OF THOSE SHOWN ABOVE.
4. LEAD COLORS ARE OPTIONAL. LEADS MUST ALWAYS BE NUMBERED AS SHOWN.

CD0005

REV. DESC: REVISE TO SHOW OPTIONAL COLORS

REV. LTR: E BY: JLP REVISED: 01/19/99 10:15 TDR: 0171435

500000

FILE: AAA00005140

MDL: -

MTL: -

**BALDOR ELECTRIC Co.**

3PH, DV, 9 LEADS