

ABB BALDOR RELIANCE III

Customer information packet

CEM7072T

5//3HP, 3450//2900RPM, 3PH, 60//50HZ, 184TC

Class - CLI GP D; CLII GP F,G

Division - Division I

Specifications

Enclosure	XPFC
Frame	184TC
Frame Material	Steel
Frequency	50.00 Hz 60.00 Hz
Haz Area Class and Group	CLI GP D; CLII GP F,G
Haz Area Division	Division I
Motor Letter Type	Three Phase
Output @ Frequency	3.000 HP @ 50 HZ 5.000 HP @ 60 HZ
Phase	3
Synchronous Speed @ Frequency	3600 RPM @ 60 HZ
Voltage @ Frequency	460.0 V @ 60 HZ 380.0 V @ 50 HZ 230.0 V @ 60 HZ 190.0 V @ 50 HZ
Agency Approvals	CSA UL
Ambient Temperature	40 °C
Auxiliary Box	NO AUXILLARY BOX
Auxiliary Box Lead Termination	None
Base Indicator	Rigid
Bearing Grease Type	Polyrex EM (-20F +300F)
Blower	None
Current @ Voltage	8.800 A @ 190.0 V 5.900 A @ 460.0 V 4.400 A @ 380.0 V 12.000 A @ 208.0 V 11.800 A @ 230.0 V
Design Code	A
Drip Cover	No Drip Cover
Duty Rating	CONT

Part Detail

Revision	M
Type	AC
Mech. spec.	36N020
Base	
Status	PRD/A
Elec. spec.	36WGS042
Layout	36LYN020
Eff. date	02-15-2024
CD Diagram	CD0005
Poles	02
Leads	9#16
Proprietary	False
Created date	06-18-2010

Efficiency @ 100% Load	88.5 %
Electrically Isolated Bearing	Not Electrically Isolated
Feedback Device	NO FEEDBACK
Front Face Code	Standard
Front Shaft Indicator	None
Haz Area Temp Code	T3C
Heater Indicator	No Heater
High Voltage Full Load Amps	4.4 a
Insulation Class	B
Inverter Code	Not Inverter
KVA Code	L
Lifting Lugs	No Lifting Lugs
Locked Bearing Indicator	Locked Bearing
Motor Lead Exit	Ko Box
Motor Lead Quantity/Wire Size	9 @ 16 AWG
Motor Lead Termination	Flying Leads
Motor Standards	NEMA
Motor Type	3630M
Mounting Arrangement	F1
Number of Poles	2
Overall Length	18.86 IN
Power Factor	91
Product Family	General Purpose
Pulley End Bearing Type	Ball
Pulley Face Code	C-Face
Pulley Shaft Indicator	Standard
Rodent Screen	None
RoHS Status	ROHS COMPLIANT
Service Factor	1.00
Shaft Diameter	1.125 IN
Shaft Extension Location	Pulley End
Shaft Ground Indicator	No Shaft Grounding
Shaft Rotation	Reversible
Shaft Slinger Indicator	No Slinger

Speed	2900 rpm 3450 rpm
Speed Code	Single Speed
Starting Method	Direct on line
Thermal Device - Bearing	None
Thermal Device - Winding	Normally Closed Thermostat
Vibration Sensor Indicator	No Vibration Sensor
Winding Thermal 1	None
Winding Thermal 2	None

Nameplate

NP1426XPSLEV					
NO.		CC	010A		
SER.					
SPEC.	36N020S042G1				
CAT.NO.	CEM7072T				
HP	5//3	T. CODE	T3C		
VOLTS	230/460//190/380				
AMPS	11.8/5.9//8.8/4.4				
RPM	3450//2900				
HZ	60//50	PH	3	CL	B
SER.F.	1.00	DES	A	CODE	L
RATING	40C AMB-CONT				
FRAME	184TC	NEMA-NOM-EFF			88.5
		PF	91		
BLANK					

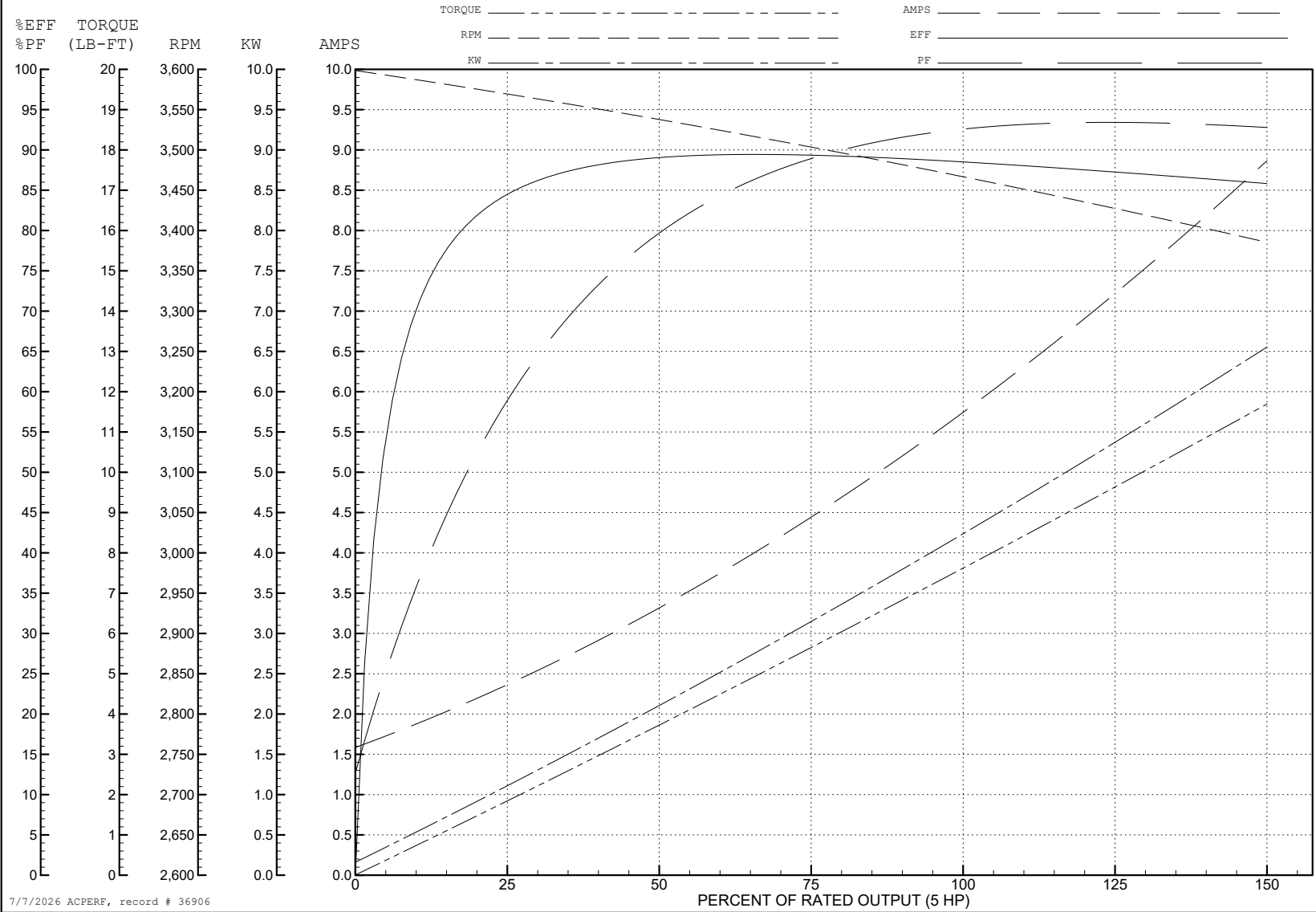
ABB Motors and Mechanical Inc.

WINDING # 36WGS042

5 HP 3 PH 60 HZ 3466 RPM 460 V 3630M

Typical performance - not guaranteed values.

TORQUES (LB-FT): PO=33.7 PU=23.5 LR=27.5 LRA=57.2



7/7/2026 ACPERF, record # 36906

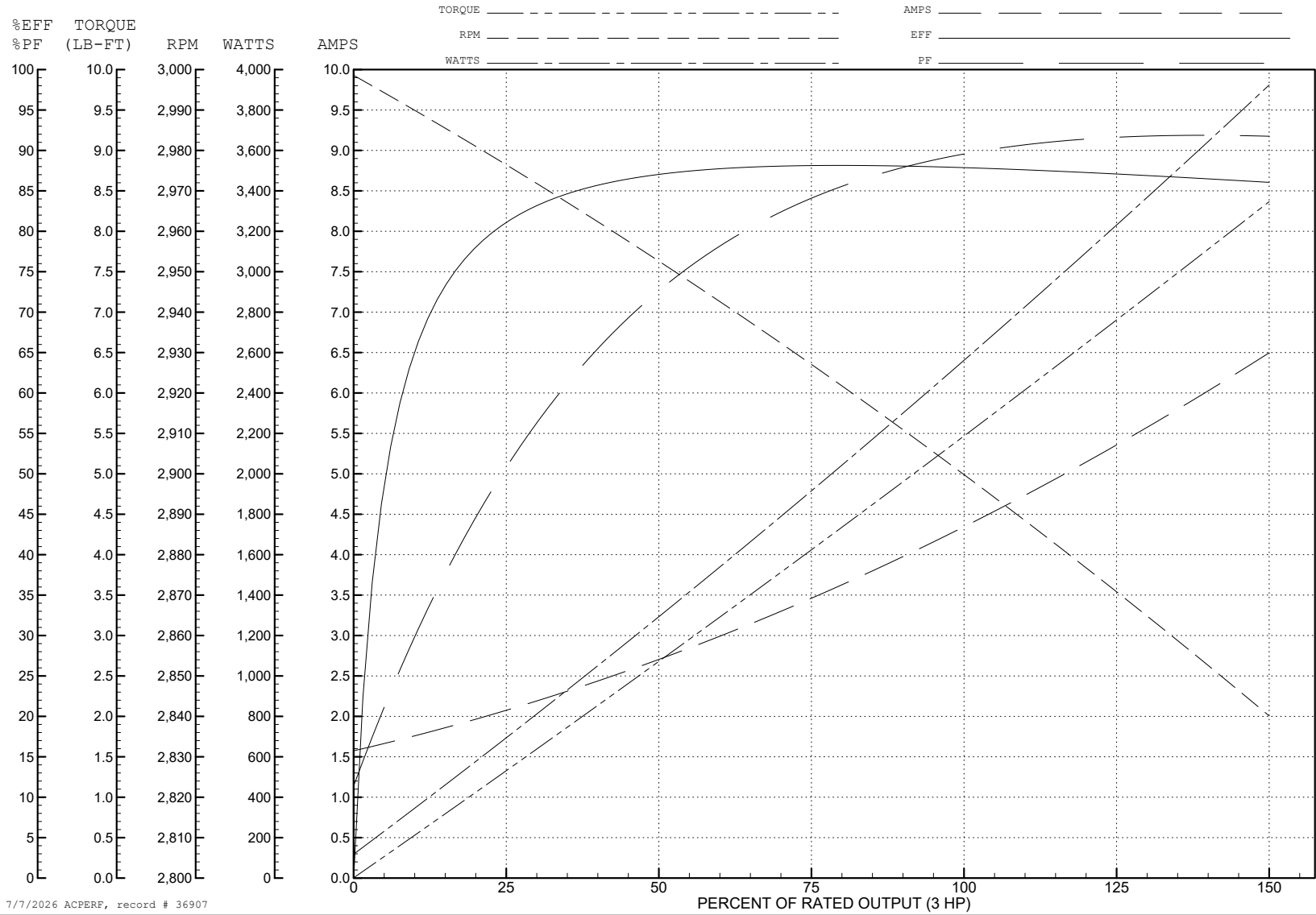
ABB Motors and Mechanical Inc.

WINDING # 36WGS042

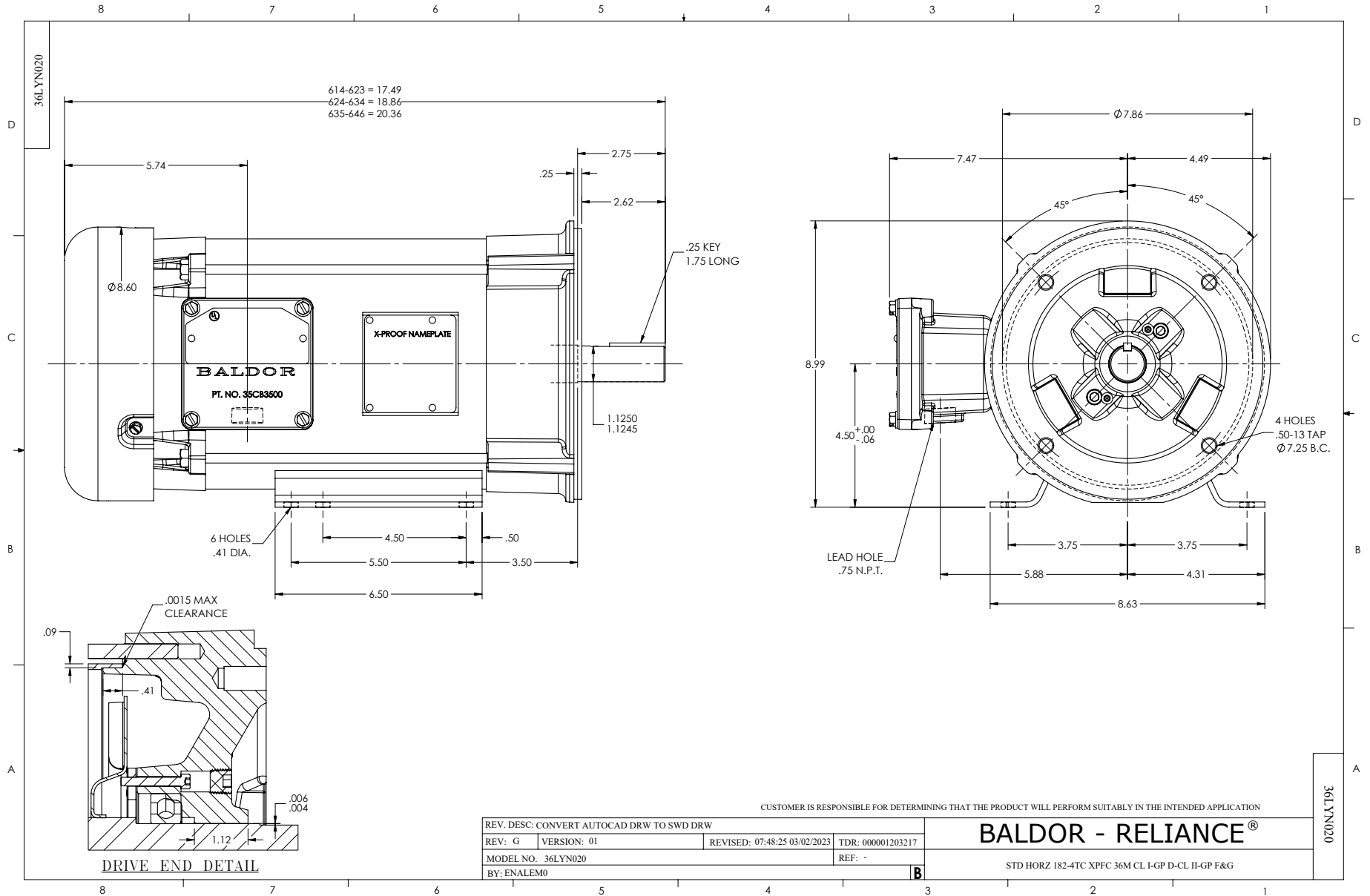
3 HP 3 PH 50 HZ 2899 RPM 380 V 3630M

Typical performance - not guaranteed values.

TORQUES (LB-FT): PO=31.6 PU=25 LR=29.2 LRA=54.3



7/7/2026 ACPERF, record # 36907



CD0005



LOW VOLTAGE
(2Y)



LINE

HIGH VOLTAGE
(1Y)



LINE

NOTES:

1. INTERCHANGE ANY TWO LINE LEADS TO REVERSE ROTATION.
2. OPTIONAL THERMOSTATS ARE PROVIDED WHEN SPECIFIED.
3. ACTUAL NUMBER OF INTERNAL PARALLEL CIRCUITS MAY BE A MULTIPLE OF THOSE SHOWN ABOVE.
4. LEAD COLORS ARE OPTIONAL. LEADS MUST ALWAYS BE NUMBERED AS SHOWN.

CD0005

REV. DESC: REVISE TO SHOW OPTIONAL COLORS

REV. LTR: E BY: JLP REVISED: 01/19/99 10:15 TDR: 0171435

500000

FILE: AAA00005140

MDL: -

MTL: -

BALDOR ELECTRIC Co.

3PH, DV, 9 LEADS