

**BALDOR® • RELIANCE™**

---

# Customer information packet

## CEM7068T-I

75//60HP, 1780//1480RPM, 3PH, 60//50HZ, 365T

Class - CLI GP C,D

Division - Division I

## Specifications

Enclosure	TEFC
Frame	365TC
Frame Material	Iron
Frequency	50.00 Hz 60.00 Hz
Haz Area Class and Group	CLI GP C,D
Haz Area Division	Division I
Motor Letter Type	Three Phase
Output @ Frequency	75.000 HP @ 60 HZ 60.000 HP @ 50 HZ
Phase	3
Synchronous Speed @ Frequency	1800 RPM @ 60 HZ
Voltage @ Frequency	190.0 V @ 50 HZ 230.0 V @ 60 HZ 380.0 V @ 50 HZ 460.0 V @ 60 HZ
Agency Approvals	CSA EEV CCSA US CSA UL
Ambient Temperature	40 °C
Auxiliary Box	NO AUXILLARY BOX
Base Indicator	Rigid
Bearing Grease Type	Polyrex EM (-20F +300F)
Current @ Voltage	84.100 A @ 460.0 V 82.000 A @ 380.0 V 168.000 A @ 230.0 V 164.000 A @ 190.0 V
Design Code	B
Drip Cover	No Drip Cover
Duty Rating	CONT
Efficiency @ 100% Load	95.4 %

## Part detail

Revision	J
Type	AC
Mech. spec.	
Base	
Status	PRD/A
Elec. spec.	A36WG0798
Layout	616512-502
Eff. date	04-13-2017
CD Diagram	416820-002
Poles	04
Leads	3#4,6#6
Proprietary	False
Created date	09-27-2014

<b>Feedback Device</b>	NO FEEDBACK
<b>Haz Area Temp Code</b>	T3C
<b>Heater Indicator</b>	No Heater
<b>High Voltage Full Load Amps</b>	82.0 a
<b>Insulation Class</b>	F
<b>Inverter Code</b>	Not Inverter
<b>KVA Code</b>	F
<b>Lifting Lugs</b>	Standard Lifting Lugs
<b>Motor Lead Quantity/Wire Size</b>	3 @ 4 AWG
<b>Motor Standards</b>	NEMA
<b>Motor Type</b>	A36068M
<b>Mounting Arrangement</b>	F1
<b>Number of Poles</b>	4
<b>Overall Length</b>	33.44 IN
<b>Power Factor</b>	88
<b>Product Family</b>	General Industrial
<b>Pulley End Bearing Type</b>	Ball
<b>Pulley Face Code</b>	C-Face
<b>Service Factor</b>	1.15
<b>Shaft Ground Indicator</b>	No Shaft Grounding
<b>Shaft Rotation</b>	Reversible
<b>Shaft Slinger Indicator</b>	No Slinger
<b>Speed</b>	1480 rpm 1780 rpm
<b>Speed Code</b>	Single Speed
<b>Starting Method</b>	Direct on line
<b>Thermal Device - Bearing</b>	None
<b>Thermal Device - Winding</b>	Normally Closed Thermostat

**Nameplate**

---

NP2496L	
MOBIL POLYREX EM	

---

---

**000613006PC**

---

**CLASS I GROUP** C D X **NO.****CLASS II GROUP** X X X**OPERATING TEMP CODE** T3C

---

**NP2293L**

<b>CAT.NO.</b>	CEM7068T-I	<b>SPEC NO.</b>	A36-5813-0798		<b>FRAME</b>	365TC	
<b>HP</b>	75//60	<b>PHASE</b>	3	<b>DESIGN</b>	B	<b>TYPE</b>	P
<b>RPM</b>	1780//1480	<b>HZ</b>	60//50	<b>AMB</b>	40	<b>SF</b>	1.15
<b>VOLTS</b>	230/460//190/380		<b>DUTY</b>	CONT	<b>INSUL.CLASS</b>	F	
<b>AMPS</b>	168/84.1//164/82		<b>ENCL</b>	TEFC	<b>CODE</b>	F	
<b>DRIVE END BEARING</b>	65BC03J30X		<b>NEMA-NOM-EFFICIENCY</b>	95.4			
<b>OPP D.E. BEARING</b>	65BC03J30X						
<b>SER.NO.</b>			NEMA MG-1 PT 5, IP55				
	SUIT FOR 55C @ 1.00SF, SUITABL			E FOR 208V		<b>MOTOR WEIGHT</b>	

S/O	FRAME	HP	TYPE	PHASE/ HERTZ	RPM	VOLTS
	365T	75	P	3/60	1780	230/460

AMPS	DUTY	AMB °C/ INSUL	S.F.	NEMA DESIGN	CODE LETTER	ENCLOSURE
168/84.1	CONT	40/F	1.15	B	F	XPFC

E/S	ROTOR	TEST S.O.	TEST DATE	STATOR RES. @25 °C OHMS (BETWEEN LINES)
892275	708559030EE	---	---	.0216/.0867

**PERFORMANCE**


LOAD	HP	AMPERES	RPM	% POWER FACTOR	% EFFICIENCY
NO LOAD	0	25.3	1800	3.18	0
1/4	18.8	32.1	1795	57.8	94.8
2/4	37.5	46.7	1790	78.2	96.1
3/4	56.2	64.5	1785	85.1	95.9
4/4	74.9	84.1	1780	87.5	95.4
5/4	93.8	106	1773	87.9	94.6

**SPEED TORQUE**

	RPM	TORQUE % FULL LOAD	TORQUE LB.-FT.	AMPERES
LOCKED ROTOR	0	179	396	510
PULL UP	270	149	330	470
BREAKDOWN	1709	237	523	289
FULL LOAD	1780	100	221	84.1

AMPERES SHOWN FOR 460 VOLT CONNECTION. IF OTHER CONNECTIONS ARE AVAILABLE, THE AMPERES WILL VARY INVERSELY WITH THE RATED VOLTAGE.

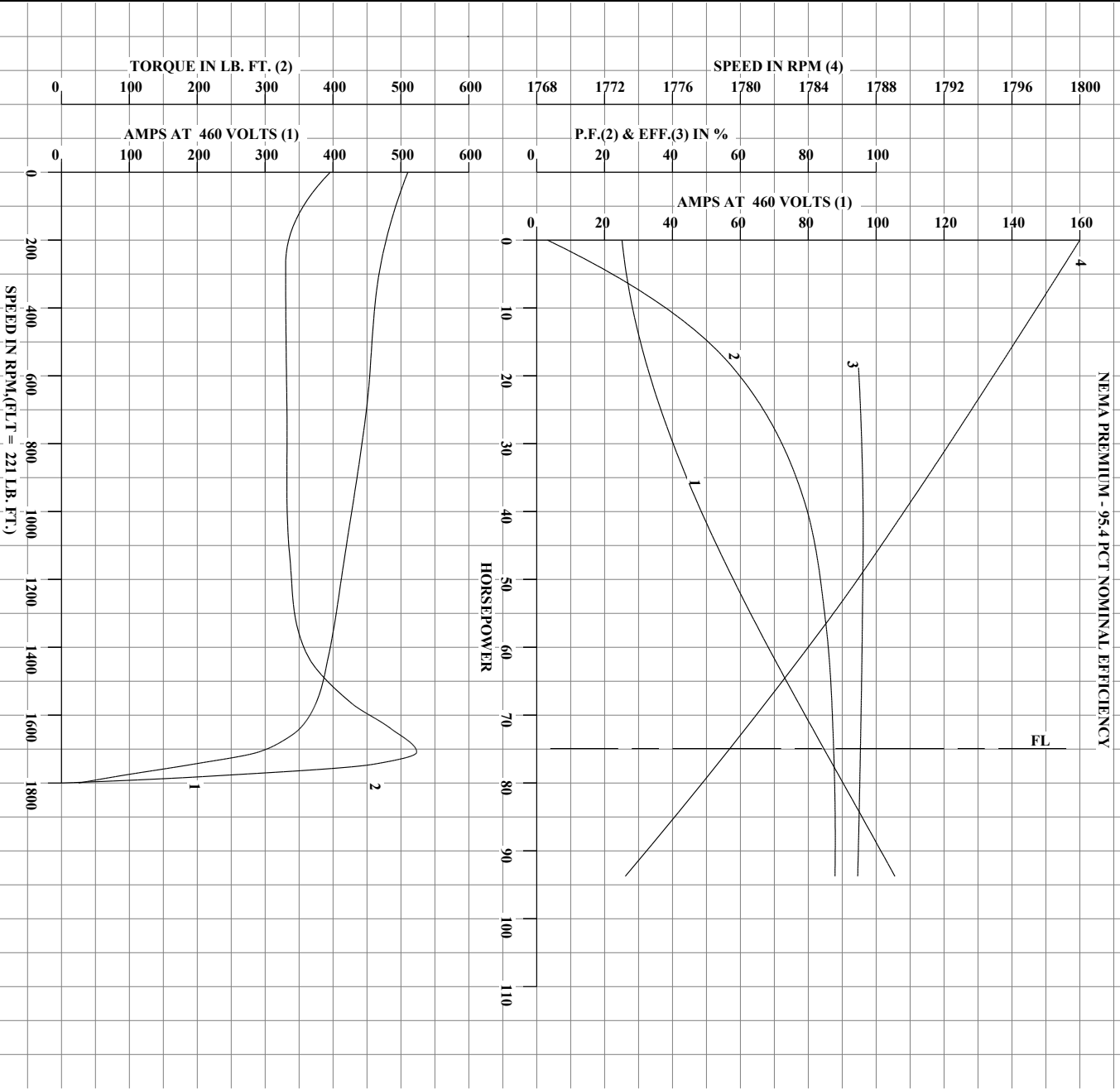
TYPICAL DATA  
NEMA PREMIUM - 95.4 PCT NOMINAL EFFICIENCY

	DRAWN BY: W.L. SMITH CHECKED BY: J.HARRISON APPROVED BY: W.L. SMITH DATE: 08/24/10	AC MOTOR PERFORMANCE DATA	A36WG0798-R002 DATE ISSUED 01/07/11

USERGHR1

Printed on 12/04/2019 2:30 PM

REL.S.O.	365T	RPM	1780	S.F.	1.15	ROTOR	708559030EE
FRAME	75	VOLTS	230/460	NEMA DESIGN	B	TEST S.O.	TYPICAL DATA
HP	75	AMPS	168/84.1	CODE LETTER	F	TEST DATE	---
TYPE	P	DUTY CONT		ENCLOSURE	XPRC	STATOR RES. @ 25°C	.0216/.0867
PHASE / HERTZ	3/60	AMB °C / INSUL	40/F	E/S	892275	OHMS (BETWEEN LINES)	



AMPERES SHOWN FOR 230/460 VOLT CONNECTION, IF OTHER VOLTAGE CONNECTIONS ARE AVAILABLE, THE AMPERES WILL VARY INVERSELY WITH THE RATED VOLTAGE.



DRAWN BY: W.L.SMITH  
 CHECKED BY: J.J.HARRISON  
 APPROVED BY: W.L.SMITH  
 DATE: 08/24/10

AC MOTOR  
 PERFORMANCE  
 DATA

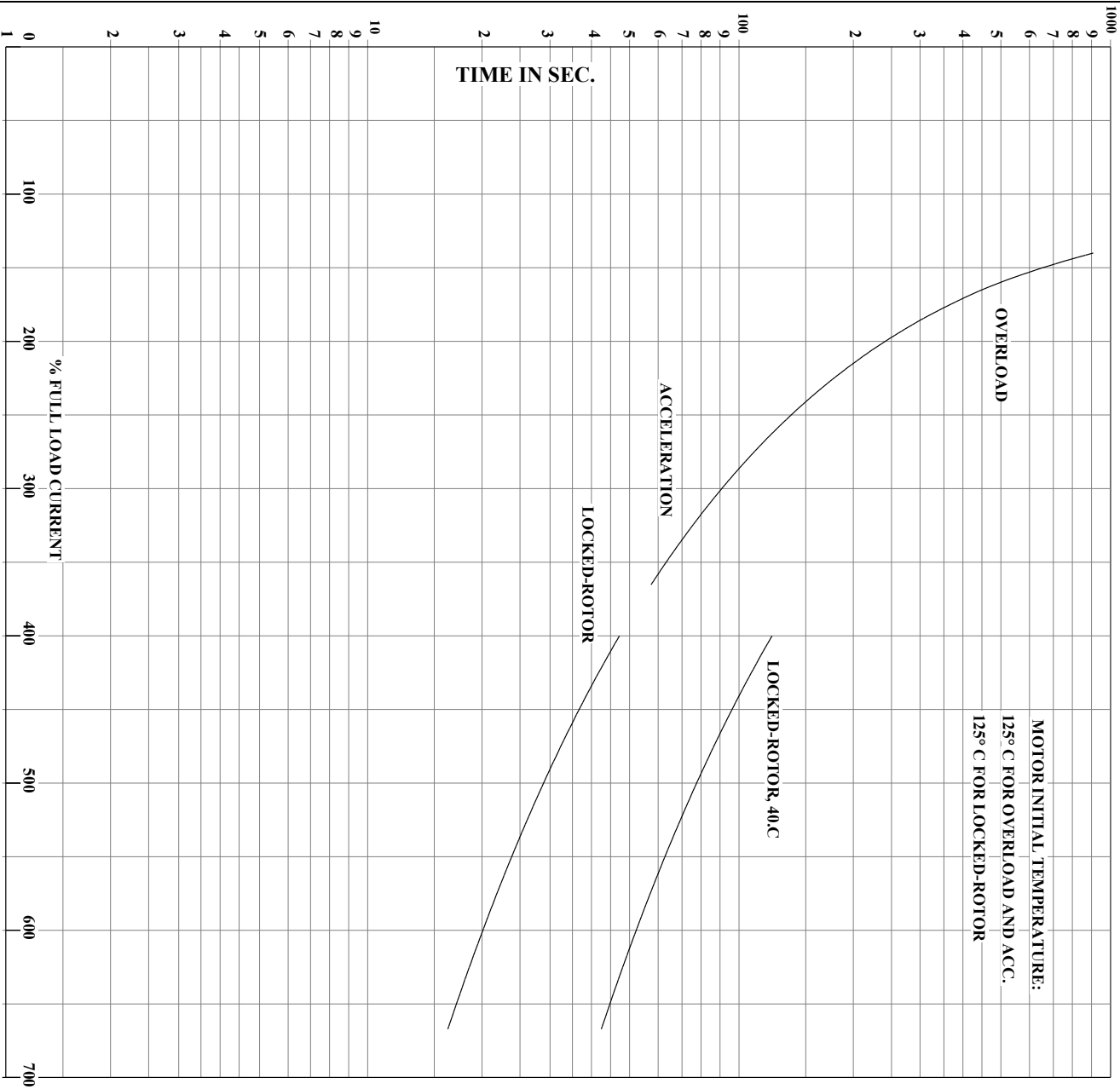
A36W/G0798-R002

ISSUE DATE 01/07/11

USER:CHRI

Printed on 12/04/2019 2:30 PM

REL.S.O.	FRAME	HP	TYPE	PHASE/HERTZ	RPM	VOLTS	AMPS	DUTY CONT	AMB °C/INSUL	S.F.	NEMA DESIGN	CODE LETTER	ENCLOSURE	ROTOR	TEST S.O.	TYPICAL DATA
	365T	75	P	3/60	1780	230/460	168/84.1		40/F	1.15	B	F	XPRC	708559030BE	---	
															TEST DATE	STATOR RES. @ 25°C .0216/.0867
																OHMS (BETWEEN LINES)



THE THERMAL LIMIT CURVE  
NEMA PREMIUM - 95.4 PCT NOMINAL EFFICIENCY

AMPERES SHOWN FOR 230/460 VOLT CONNECTION, IF OTHER VOLTAGE CONNECTIONS ARE AVAILABLE, THE AMPERES WILL VARY INVERSELY WITH THE RATED VOLTAGE.



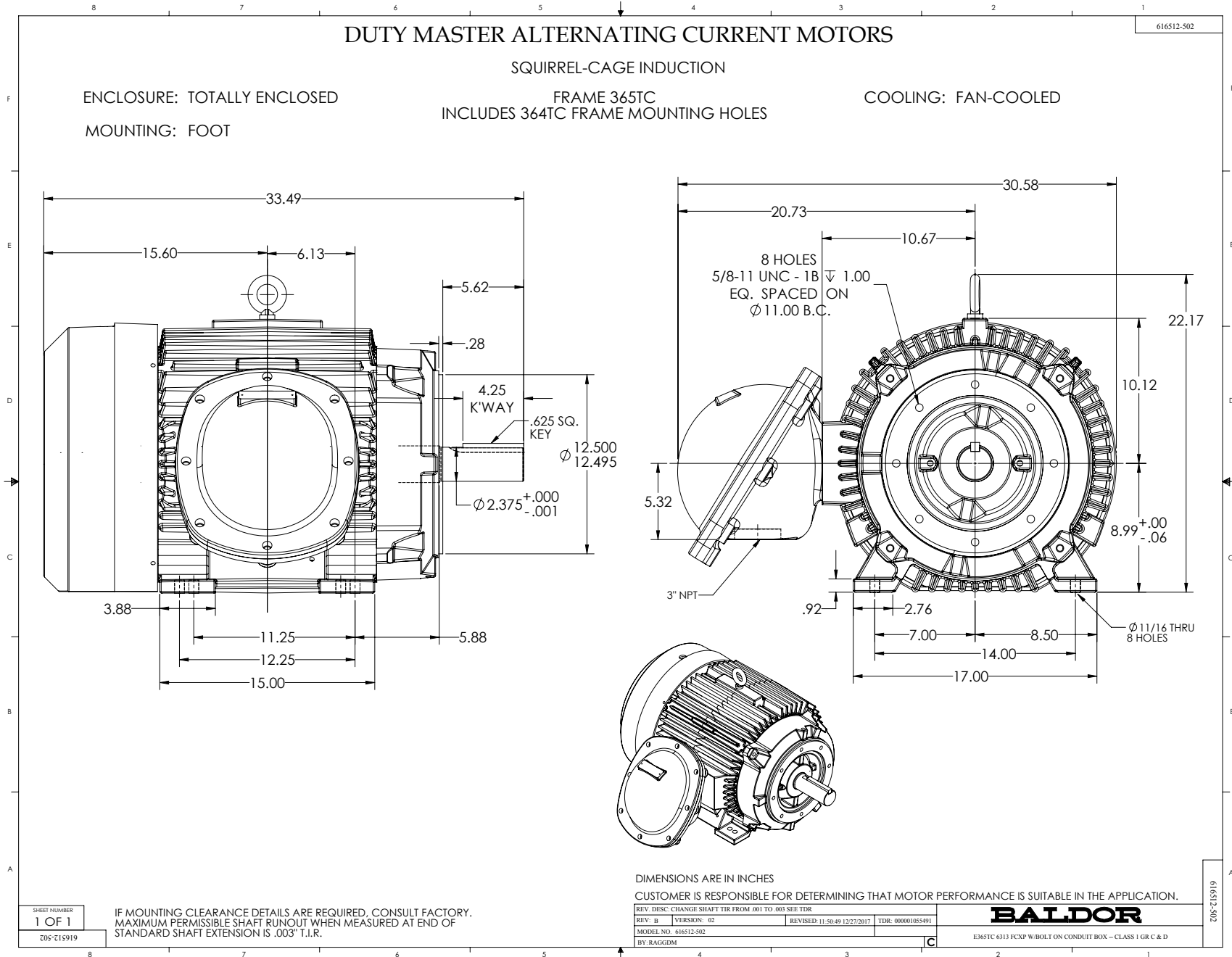
DRAWN BY: W.L. SMITH  
CHECKED BY: J.J. HARRISON  
APPROVED BY: W.L. SMITH  
DATE: 08/24/10

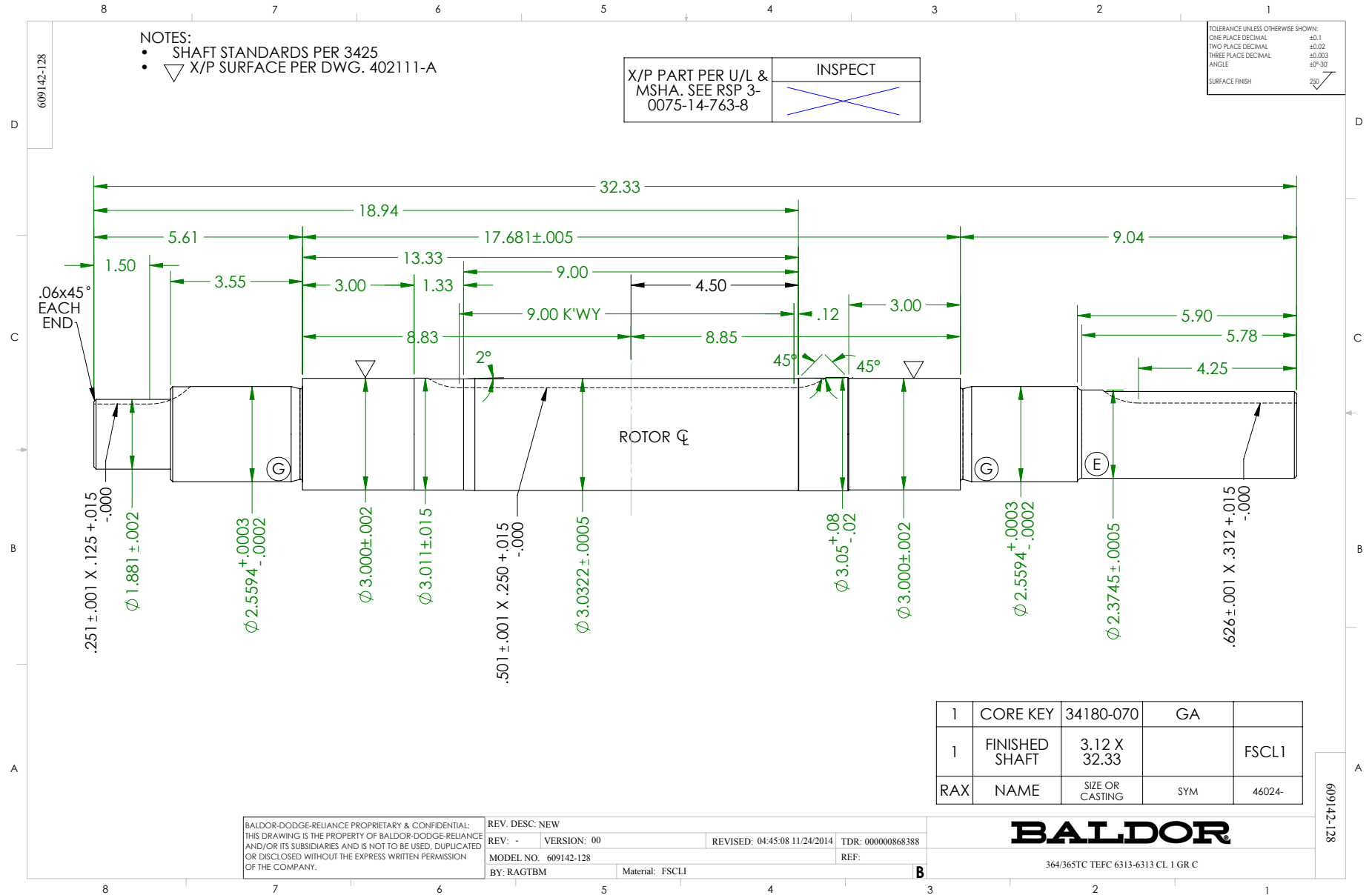
AC MOTOR  
PERFORMANCE  
DATA

A36WG0798-R002  
ISSUE DATE 01/07/11

USER:CHR1

Printed on 12/04/2019 2:30 PM





# CONNECTION DIAGRAM ACCESSORIES

MOTOR WINDING THERMOSTATS	
CONTACTS _____ @ _____ °C	
FIGURE NUMBER _____	
CONTACT RATING	
VOLTS	CONTINUOUS AMPERES
110-120	3.0
220-240	1.5
440-480	0.75
550-600	0.60
	INRUSH AMPERES
	30
	15
	7.5
	6.0

NORMALLY CLOSED	THERMOSTATS	NORMALLY OPEN
<p>FIGURE 1</p>		<p>FIGURE 4</p>
<p>FIGURE 2</p>		<p>FIGURE 5</p>
<p>FIGURE 3</p>		<p>FIGURE 6</p>
<p>FIGURE 7</p>		<p>FIGURE 8</p>

CUSTOMER \_\_\_\_\_ CUSTOMER ORDER NO. \_\_\_\_\_ S.O. NO. \_\_\_\_\_

418174-006

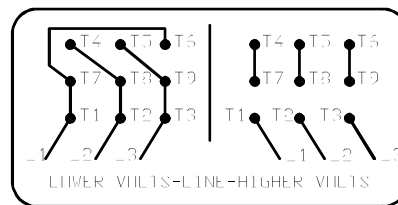
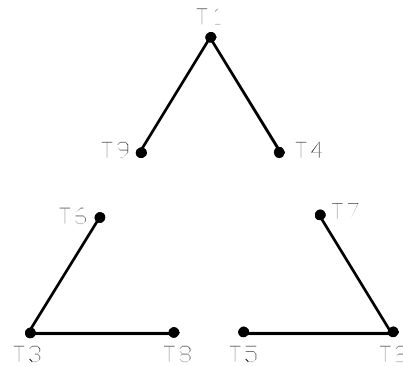
418174-006

REV. DESC: LOADED TO BUS		
REV. LTR: A	VERSION: 01	TDR: 000000570390
FILE: \RAG\00013\849	REVISED: 10:16:21 12/07/2010	BY: RAGDRF
MTL: -		

**BALDOR**  
A-C MOTOR CONNECTION ACCESSORIES  
SH 1 of 1

416820-002

A-C MOTOR  
 CONNECTION DIAGRAM  
 STANDARD 9 LEAD DELTA-CONNECTED



(N.P. 1575-B)

416820-002

REV. DESC: FONT CHANGE FOR PDF SEARCHABLE		
REV. LTR: A	VERSION: 01	TDR: 000001009382
FILE: \MGA\00000\661	REVISED: 02:46:19 02/13/2020	BY: MGHMTT
MTL: -	© □	

**BALDOR - RELIANCE®**

CONN DIAG - STANDARD 9 LEAD, DELTA-CONNECTED

SH 1 of 1