

ABB BALDOR RELIANCE III

Customer information packet

CEM3774T

10HP, 1765RPM, 3PH, 60HZ, 215TC, 0748M, TEFC, F

Class - None

Division - Not Applicable

Specifications

Enclosure	TEFC
Frame	215TC
Frame Material	Iron
Frequency	60.00 Hz
Haz Area Class and Group	None
Haz Area Division	Not Applicable
Motor Letter Type	Three Phase
Output @ Frequency	10.000 HP @ 60 HZ
Phase	3
Synchronous Speed @ Frequency	1800 RPM @ 60 HZ
Voltage @ Frequency	460.0 V @ 60 HZ 230.0 V @ 60 HZ
Agency Approvals	CE CSA CURUSEEV NEMA PREMIUM UR WEEE
Ambient Temperature	40 °C
Auxiliary Box	NO AUXILLARY BOX
Auxiliary Box Lead Termination	None
Base Indicator	Rigid
Bearing Grease Type	Polyrex EM (-20F +300F)
Blower	None
Current @ Voltage	27.000 A @ 208.0 V 24.600 A @ 230.0 V 12.300 A @ 460.0 V
Design Code	B
Drip Cover	No Drip Cover
Duty Rating	CONT
Efficiency @ 100% Load	91.7 %
Electrically Isolated Bearing	Not Electrically Isolated

Part Detail

Revision	G
Type	AC
Mech. spec.	07H058
Base	
Status	PRD/A
Elec. spec.	07WGT511
Layout	07LYH058
Eff. date	10-17-2024
CD Diagram	CD0005
Poles	04
Leads	9#14
Proprietary	False
Created date	02-08-2021

Feedback Device	NO FEEDBACK
Front Shaft Indicator	None
Heater Indicator	No Heater
High Voltage Full Load Amps	12.3 a
Insulation Class	F
Inverter Code	Inverter Ready
KVA Code	H
Lifting Lugs	Standard Lifting Lugs
Locked Bearing Indicator	Locked Bearing
Motor Lead Quantity/Wire Size	9 @ 14 AWG
Motor Lead Termination	Flying Leads
Motor Standards	NEMA
Motor Type	0748M
Mounting Arrangement	F1
Number of Poles	4
Overall Length	19.20 IN
Power Factor	83
Product Family	General Purpose
Pulley End Bearing Type	Ball
Pulley Face Code	C-Face
Pulley Shaft Indicator	Standard
Rodent Screen	None
RoHS Status	ROHS COMPLIANT
Service Factor	1.15
Shaft Diameter	1.375 IN
Shaft Ground Indicator	No Shaft Grounding
Shaft Rotation	Reversible
Shaft Slinger Indicator	No Slinger
Speed	1765 rpm
Speed Code	Single Speed
Starting Method	Direct on line
Thermal Device - Bearing	None
Thermal Device - Winding	None
Vibration Sensor Indicator	No Vibration Sensor

Winding Thermal 1

None

Winding Thermal 2

None

Nameplate

NP3441LUA

CAT.NO.	CEM3774T						
SPEC	07H058T511G1						
HP	10						
VOLTS	230/460						
AMPS	24.6/12.3						
RPM	1765						
FRAME	215TC	HZ	60	PH	3		
SF	1.15	CODE	H	DES	B	CLASS	F
NEMA NOM. EFF	91.7	PF	83				
RATING	40C AMB-CONT						
CC	010A						
ENCL	TEFC	SER					
DE	6307	ODE	6206				
VPWM INVERTER READY	SFA 28.2/14.1						
CT6-60H(10:1)VT3-60H(20:1)	50HZ 10HP 190/380V 29.8/14.9A					SF1.0	

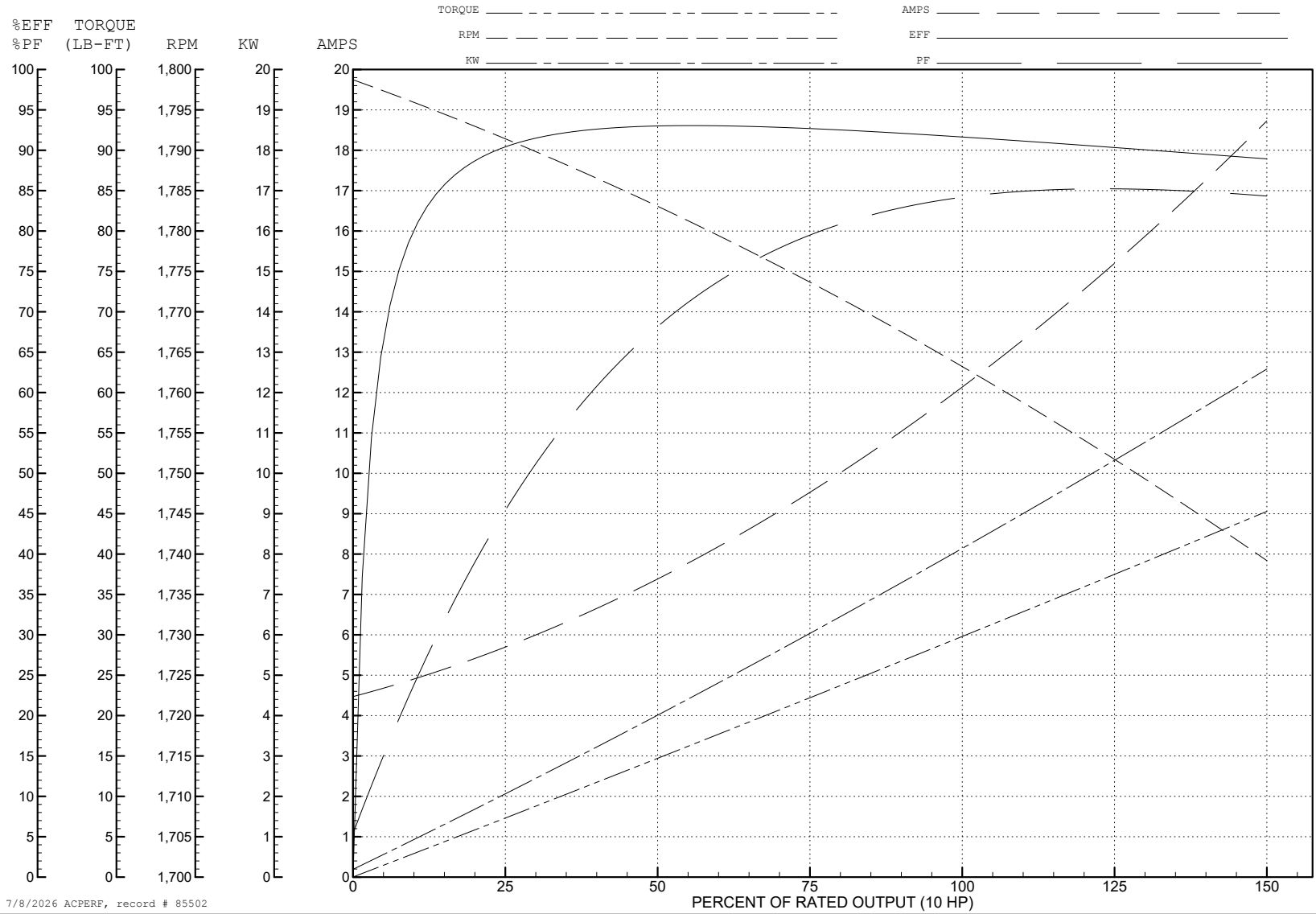
ABB Motors and Mechanical Inc.

WINDING # 07WGT511

Typical performance - not guaranteed values.

10 HP 3 PH 60 HZ 1765 RPM 460 V 0748M

TORQUES (LB-FT): PO=84.1 PU=39.8 LR=50.9 LRA=85.9



7/8/2026 ACPERF, record # 85502

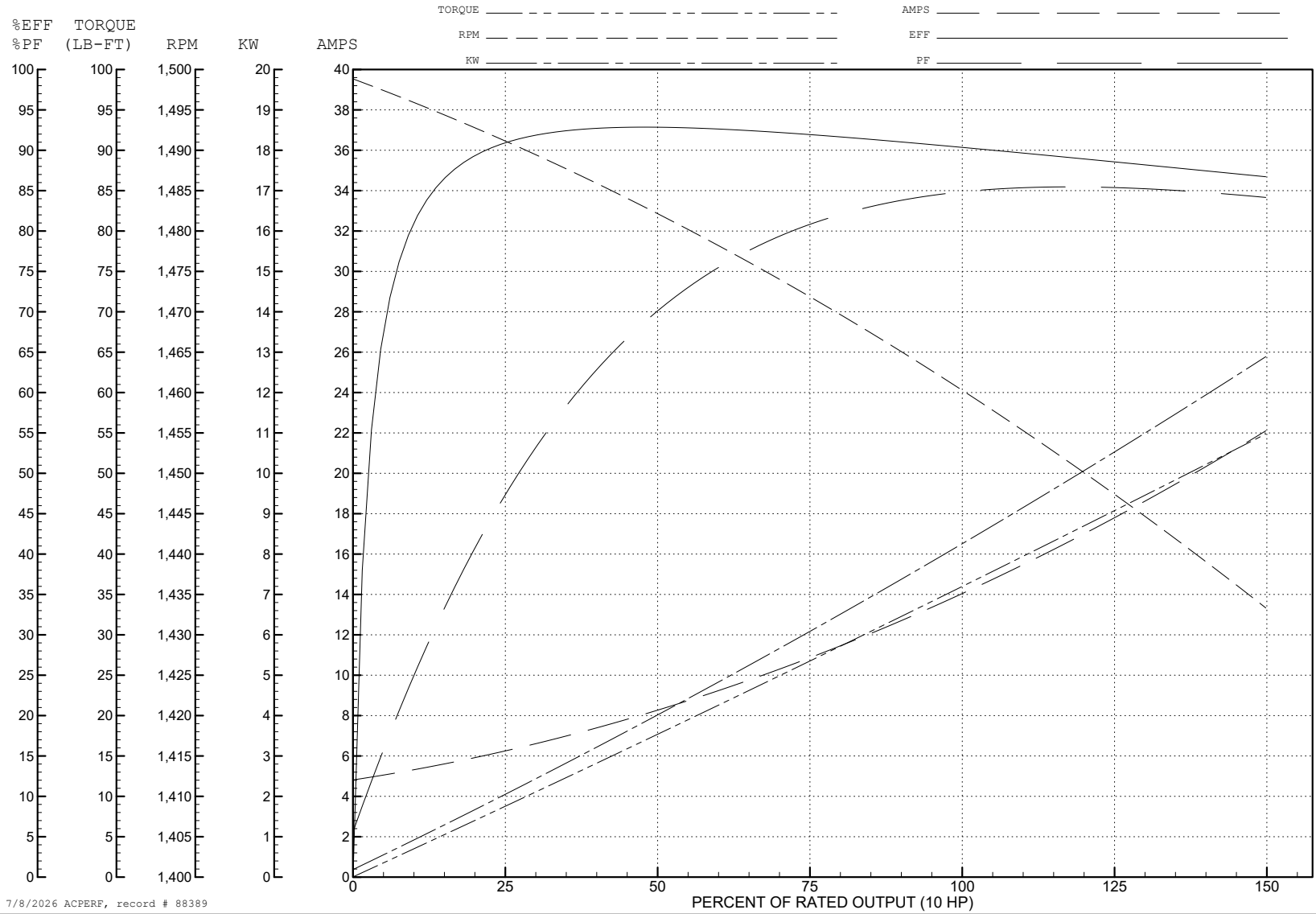
ABB Motors and Mechanical Inc.

WINDING # 07WGT511

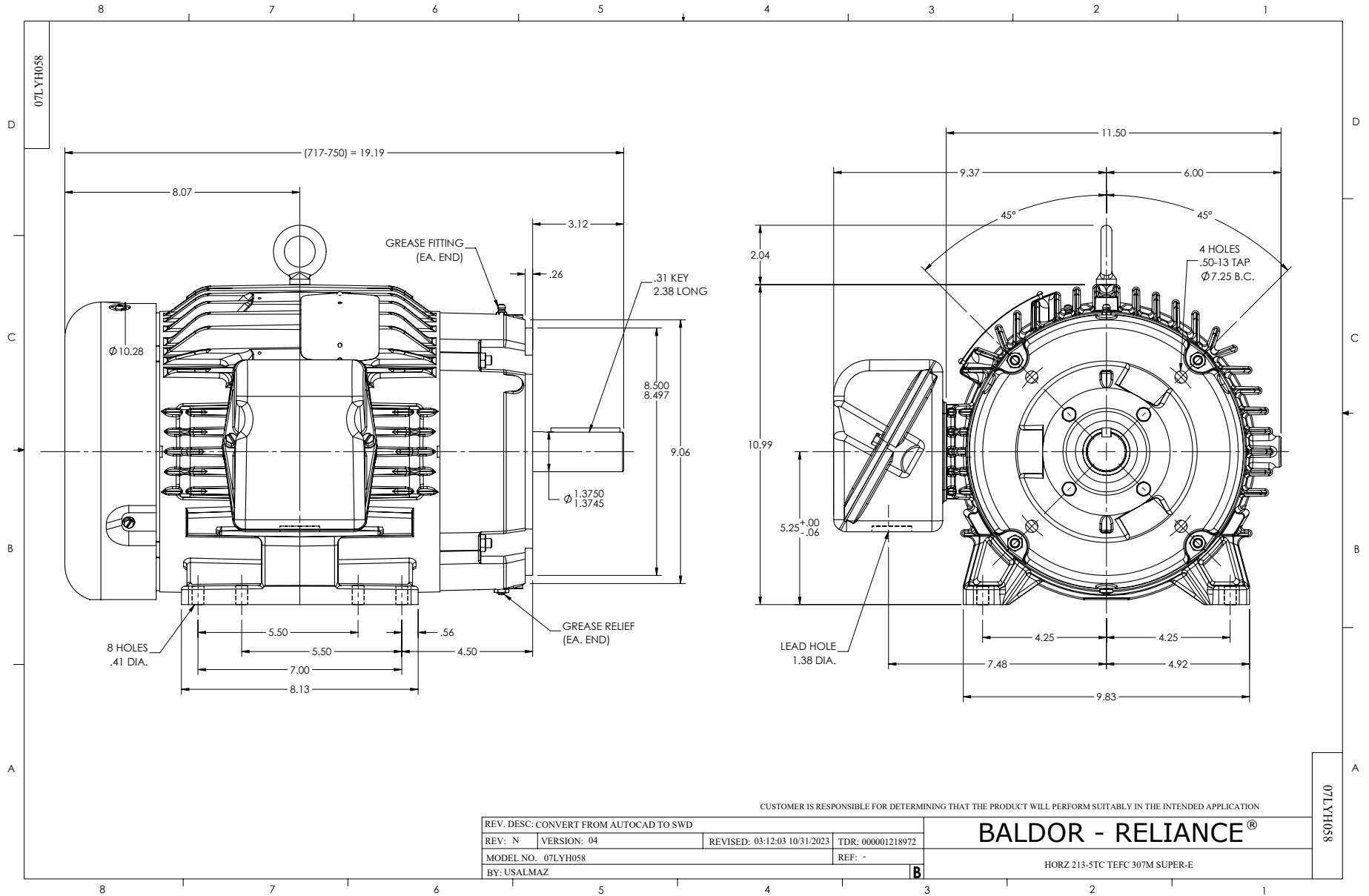
Typical performance - not guaranteed values.

10 HP 3 PH 50 HZ 1765 RPM 400 V 0748M

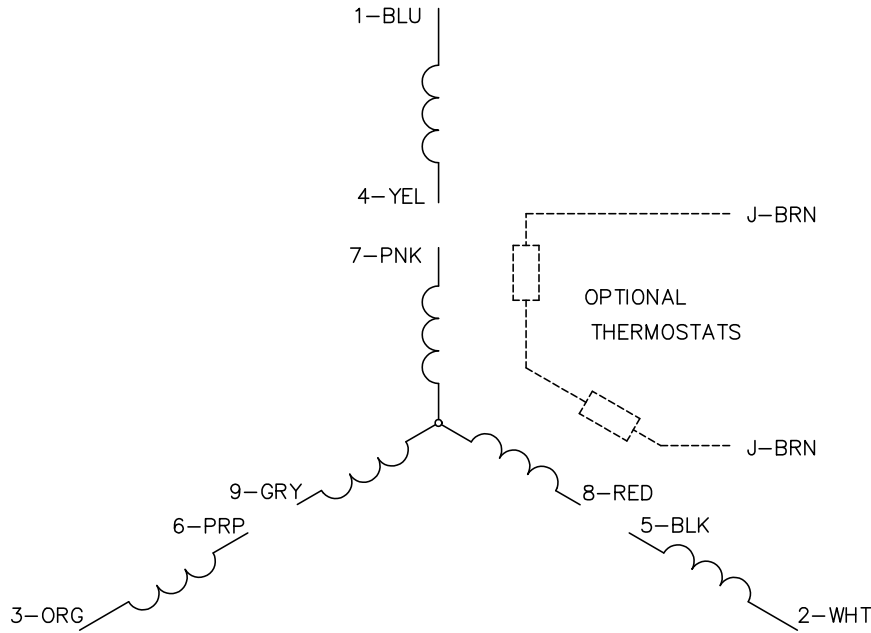
TORQUES (LB-FT): PO=89.52 PU=46.23 LR=59.13 LRA=88.53



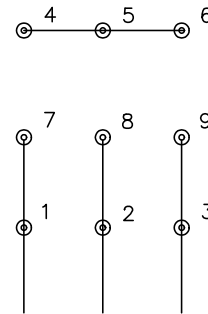
7/8/2026 ACPERF, record # 88389



CD0005



LOW VOLTAGE
(2Y)



LINE

HIGH VOLTAGE
(1Y)



LINE

NOTES:

1. INTERCHANGE ANY TWO LINE LEADS TO REVERSE ROTATION.
2. OPTIONAL THERMOSTATS ARE PROVIDED WHEN SPECIFIED.
3. ACTUAL NUMBER OF INTERNAL PARALLEL CIRCUITS MAY BE A MULTIPLE OF THOSE SHOWN ABOVE.
4. LEAD COLORS ARE OPTIONAL. LEADS MUST ALWAYS BE NUMBERED AS SHOWN.

CD0005

REV. DESC: REVISE TO SHOW OPTIONAL COLORS			
REV. LTR: E	BY: JLP	REVISED: 01/19/99 10:15	TDR: 0171435
S00000		FILE: AAA00005140	MDL: -
		MTL: -	

BALDOR ELECTRIC Co.

3PH, DV, 9 LEADS