



Customer information packet

CEM3663T

5HP, 3480RPM, 3PH, 60HZ, 184TC, 0628M, TEFC, F1

Class - None

Division - Not Applicable

Specifications

Enclosure	TEFC
Frame	184TC
Frame Material	Iron
Frequency	60.00 Hz
Motor Letter Type	Three Phase
Output @ Frequency	5.000 HP @ 60 HZ
Phase	3
Synchronous Speed @ Frequency	3600 RPM @ 60 HZ
Voltage @ Frequency	460.0 V @ 60 HZ 230.0 V @ 60 HZ
XP Class and Group	None
XP Division	Not Applicable
Agency Approvals	CSA CSA EEV UR
Ambient Temperature	40 °C
Auxillary Box	No Auxillary Box
Auxillary Box Lead Termination	None
Base Indicator	Rigid
Bearing Grease Type	Polyrex EM (-20F +300F)
Blower	None
Current @ Voltage	12.400 A @ 208.0 V 5.800 A @ 460.0 V 11.600 A @ 230.0 V
Design Code	A
Drip Cover	No Drip Cover
Duty Rating	CONT
Efficiency @ 100% Load	88.5 %
Electrically Isolated Bearing	Not Electrically Isolated
Feedback Device	NO FEEDBACK
Front Face Code	Standard
Front Shaft Indicator	None

Part detail

Revision	E
Type	AC
Mech. spec.	06F057
Base	
Status	PRD/A
Elec. spec.	06WGX782
Layout	06LYF057
Eff. date	06-19-2019
CD Diagram	CD0005
Poles	02
Leads	9#16
Proprietary	False
Created date	05-07-2015

Heater Indicator	No Heater
High Voltage Full Load Amps	5.8 a
Insulation Class	F
Inverter Code	Not Inverter
KVA Code	L
Lifting Lugs	Standard Lifting Lugs
Locked Bearing Indicator	Locked Bearing
Motor Lead Exit	Ko Box
Motor Lead Quantity/Wire Size	9 @ 16 AWG
Motor Lead Termination	Flying Leads
Motor Standards	NEMA
Motor Type	0628M
Mounting Arrangement	F1
Number of Poles	2
Overall Length	16.00 IN
Power Factor	90
Product Family	General Purpose
Pulley End Bearing Type	Ball
Pulley Face Code	C-Face
Pulley Shaft Indicator	Standard
Rodent Screen	None
Service Factor	1.15
Shaft Diameter	1.125 IN
Shaft Extension Location	Pulley End
Shaft Ground Indicator	No Shaft Grounding
Shaft Rotation	Reversible
Shaft Slinger Indicator	No Slinger
Speed	3480 rpm
Speed Code	Single Speed
Starting Method	Direct on line
Thermal Device - Bearing	None
Thermal Device - Winding	None
Vibration Sensor Indicator	No Vibration Sensor
Winding Thermal 1	None

Winding Thermal 2

None

Nameplate

NP3441LUA

CAT.NO.	CEM3663T						
SPEC	06F057X782G1						
HP	5						
VOLTS	230/460						
AMPS	11.6/5.8						
RPM	3480						
FRAME	184TC	HZ	60	PH	3		
SF	1.15	CODE	L	DES	A	CLASS	F
NEMA NOM. EFF	88.5	PF	90				
RATING	40C AMB-CONT						
CC	010A	USABLE AT 208V				12.4	
ENCL	TEFC	SER					
DE	6206	ODE	6205				
VPWM INVERTER READY							
CT6-60H(10:1)VT3-60H(20:1)	50Hz 5HP 190/380V 14/7A						SF1.0

AC Induction Motor Performance Data

Record # 53080

Typical performance - not guaranteed values

Winding: 06WGX782-R005		Type: 0628M	Enclosure: TEFC	
Nameplate Data			460 V, 60 Hz: High Voltage Connection	
Rated Output (HP)	5	Full Load Torque	7.55 LB-FT	
Volts	230/460	Start Configuration	direct on line	
Full Load Amps	11.6/5.8	Breakdown Torque	35.8 LB-FT	
R.P.M.	3480	Pull-up Torque	23.1 LB-FT	
Hz	60 Phase	Locked-rotor Torque	27.7 LB-FT	
NEMA Design Code	A KVA Code	Starting Current	59.9 A	
Service Factor (S.F.)	1.15	No-load Current	2.05 A	
NEMA Nom. Eff.	88.5 Power Factor	Line-line Res. @ 25°C	2.7676 Ω	
Rating - Duty	40C AMB-CONT	Temp. Rise @ Rated Load	57°C	
S.F. Amps		Temp. Rise @ S.F. Load	71°C	

Load Characteristics 460 V, 60 Hz, 5 HP

% of Rated Load	25	50	75	100	125	150	S.F.
Power Factor	56	77	87	91	93	94	92
Efficiency	85.8	89.9	90.1	89.3	87.9	86.2	88.5
Speed	3573.6	3546.9	3516.7	3485.2	3451.8	3413.3	3465
Line amperes	2.45	3.35	4.53	5.8	7.17	8.69	6.62

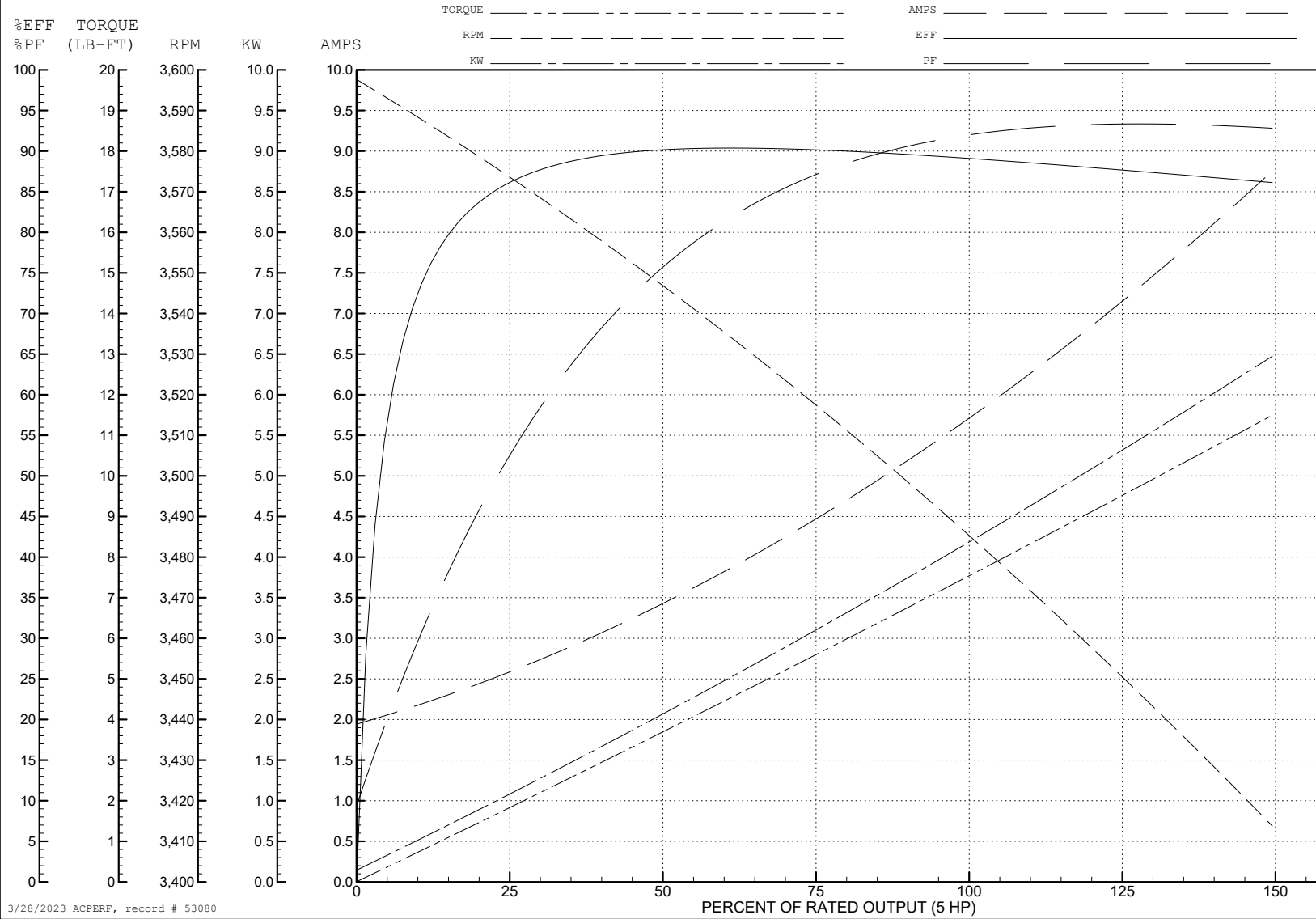
ABB Motors and Mechanical Inc.

WINDING # 06WGX782

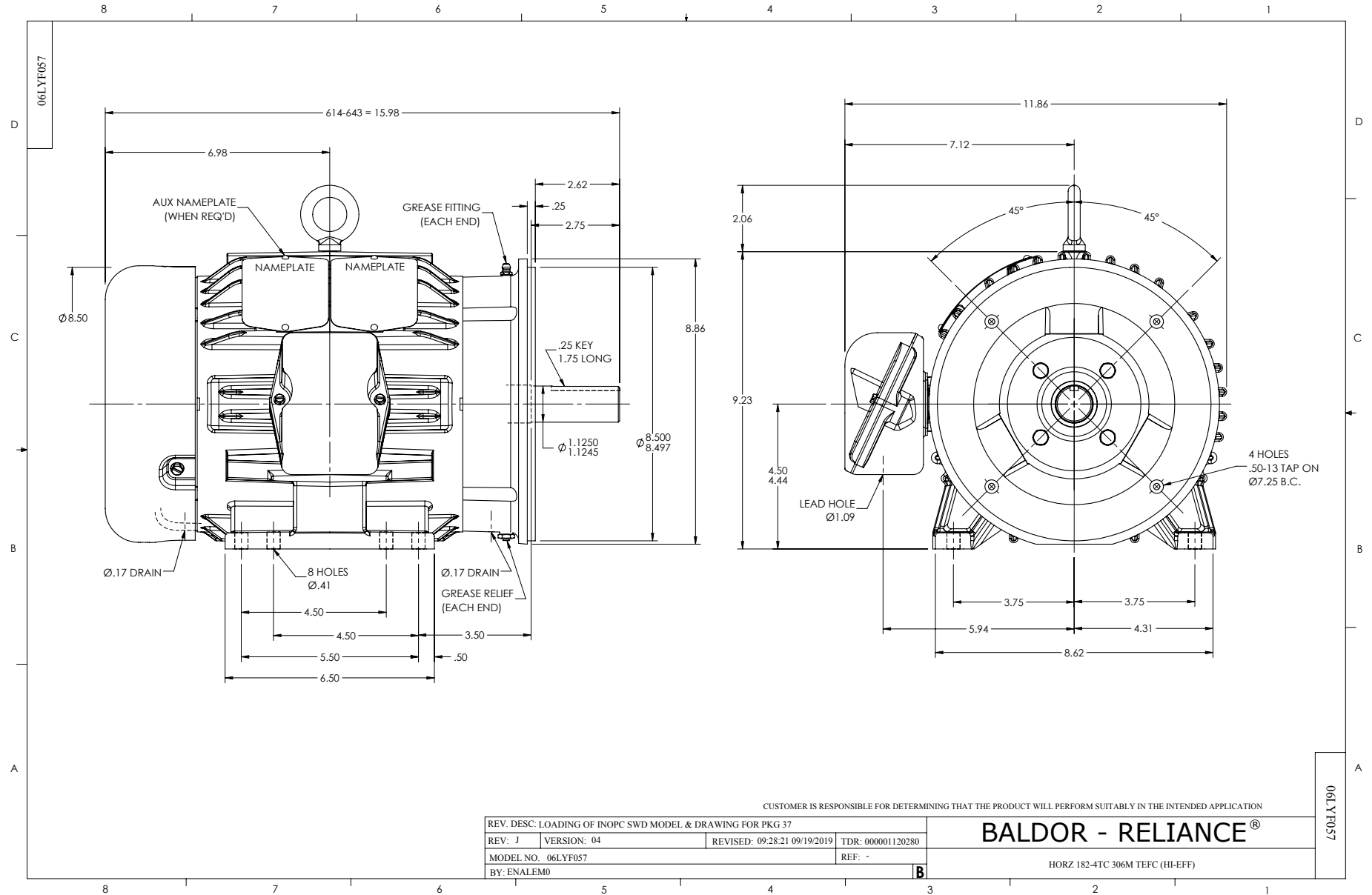
Typical performance - not guaranteed values.

5 HP 3 PH 60 HZ 3480 RPM 460 V 0628M

TORQUES (LB-FT): PO=35.8 PU=23.1 LR=27.7 LRA=59.9



3/28/2023 ACPERF, record # 53080



CUSTOMER IS RESPONSIBLE FOR DETERMINING THAT THE PRODUCT WILL PERFORM SUITABLY IN THE INTENDED APPLICATION

REV. DESC: LOADING OF INOPC SWD MODEL & DRAWING FOR PKG 37			
REV: J	VERSION: 04	REVISED: 09/28/21 09/19/2019	TDR: 000001120280
MODEL NO. 06LYF057		REF: -	
BY: ENALEM0		B	

BALDOR - RELIANCE[®]

HORZ 182-4TC 306M TEFC (HI-EFF)

CD0005



LOW VOLTAGE
(2Y)



LINE

HIGH VOLTAGE
(1Y)



LINE

NOTES:

1. INTERCHANGE ANY TWO LINE LEADS TO REVERSE ROTATION.
2. OPTIONAL THERMOSTATS ARE PROVIDED WHEN SPECIFIED.
3. ACTUAL NUMBER OF INTERNAL PARALLEL CIRCUITS MAY BE A MULTIPLE OF THOSE SHOWN ABOVE.
4. LEAD COLORS ARE OPTIONAL. LEADS MUST ALWAYS BE NUMBERED AS SHOWN.

CD0005

REV. DESC: REVISE TO SHOW OPTIONAL COLORS			
REV. LTR: E	BY: JLP	REVISED: 01/19/99 10:15	TDR: 0171435
S00000		FILE: AAA00005140	MDL: -
		MTL: -	

BALDOR ELECTRIC Co.

3PH, DV, 9 LEADS