

BALDOR • RELIANCE

Customer information packet

CEM3613T-G

5HP, 3450RPM, 3PH, 60HZ, 184TC, TEFC, F1

Class - None

Division - Not Applicable

Copyright © All product information within this document is subject to ABB Motors and Mechanical Inc. copyright © protection, unless otherwise noted.

1/18/2025 8:33:05 PM

Specifications

Enclosure	TEFC
Frame	184TC
Frame Material	Steel
Frequency	60.00 Hz
Haz Area Class and Group	None
Haz Area Division	Not Applicable
Motor Letter Type	Three Phase
Output @ Frequency	5.000 HP @ 60 HZ
Phase	3
Synchronous Speed @ Frequency	3600 RPM @ 60 HZ
Voltage @ Frequency	230.0 V @ 60 HZ 460.0 V @ 60 HZ
Agency Approvals	CSA CSA EEV NEMA PREMIUM UR
Ambient Temperature	40 °C
Auxillary Box	No Auxillary Box
Auxillary Box Lead Termination	None
Base Indicator	Rigid
Bearing Grease Type	Polyrex EM (-20F +300F)
Blower	None
Current @ Voltage	5.900 A @ 460.0 V 11.800 A @ 230.0 V
Design Code	A
Drip Cover	No Drip Cover
Duty Rating	CONT
Efficiency @ 100% Load	88.5 %
Electrically Isolated Bearing	Not Electrically Isolated
Feedback Device	NO FEEDBACK
Heater Indicator	No Heater
High Voltage Full Load Amps	5.9 a

Part detail

Revision	C
Type	AC
Mech. spec.	
Base	
Status	PRD/A
Elec. spec.	36WGS042
Layout	36LYN147
Eff. date	05-01-2024
CD Diagram	CD0005
Poles	02
Leads	9#16
Proprietary	False
Created date	12-17-2019

Insulation Class	H
Inverter Code	Inverter Ready
IP Rating	NONE
KVA Code	L
Lifting Lugs	No Lifting Lugs
Locked Bearing Indicator	Locked Bearing
Motor Lead Termination	Flying Leads
Motor Standards	NEMA
Motor Type	3630M
Mounting Arrangement	F1
Number of Poles	2
Overall Length	16.55 IN
Power Factor	91
Product Family	General Purpose
Pulley Face Code	C-Face
Rodent Screen	None
Service Factor	1.15
Shaft Diameter	1.125 IN
Shaft Ground Indicator	Shaft Grounding
Shaft Rotation	Reversible
Speed	3450 rpm
Speed Code	Single Speed
Starting Method	Direct on line
Thermal Device - Bearing	None
Thermal Device - Winding	None
Vibration Sensor Indicator	No Vibration Sensor
Winding Thermal 1	None
Winding Thermal 2	None

Nameplate

NP3441LUA

CAT.NO.	CEM3613T-G						
SPEC	36-0000-0250						
HP	5						
VOLTS	230/460						
AMPS	11.8/5.9						
RPM	3450						
FRAME	184TC		HZ	60		PH	3
SF	1.15	CODE	L	DES	A	CLASS	H
NEMA NOM. EFF	88.5	PF	91				
RATING	40C AMB-CONT						
CC	010A						
ENCL	TEFC	SER					
DE	6206	ODE	6205				
VPWM INVERTER READY							
CT6-60H(10:1)VT3-60H(20:1	50HZ 5HP 190/380V 14.2/7.1A						SF1.0

AC Induction Motor Performance Data

Record # 46787

Typical performance - not guaranteed values

Winding: 36WGS042-R032		Type: 3630M	Enclosure: TEFC	
Nameplate Data			460 V, 60 Hz: High Voltage Connection	
Rated Output (HP)	5	Full Load Torque	7.67 LB-FT	
Volts	230/460	Start Configuration	direct on line	
Full Load Amps	11.8/5.9	Breakdown Torque	33.7 LB-FT	
R.P.M.	3450	Pull-up Torque	23.5 LB-FT	
Hz	60 Phase	Locked-rotor Torque	27.5 LB-FT	
NEMA Design Code	A KVA Code	Starting Current	57.2 A	
Service Factor (S.F.)	1.15	No-load Current	1.68 A	
NEMA Nom. Eff.	88.5 Power Factor	Line-line Res. @ 25°C	2.26 Ω	
Rating - Duty	40C AMB-CONT	Temp. Rise @ Rated Load	72°C	
S.F. Amps		Temp. Rise @ S.F. Load	88°C	
		Locked-rotor Power Factor	45	
		Rotor inertia	0.134 LB-FT ²	

Load Characteristics 460 V, 60 Hz, 5 HP

% of Rated Load	25	50	75	100	125	150	S.F.
Power Factor	62	81	88	91	93	94	92
Efficiency	84.1	88.9	89.4	88.7	87.3	85.8	87.9
Speed	3569	3537	3504	3466	3428	3385	3443
Line amperes	2.24	3.26	4.47	5.85	7.26	8.8	6.7

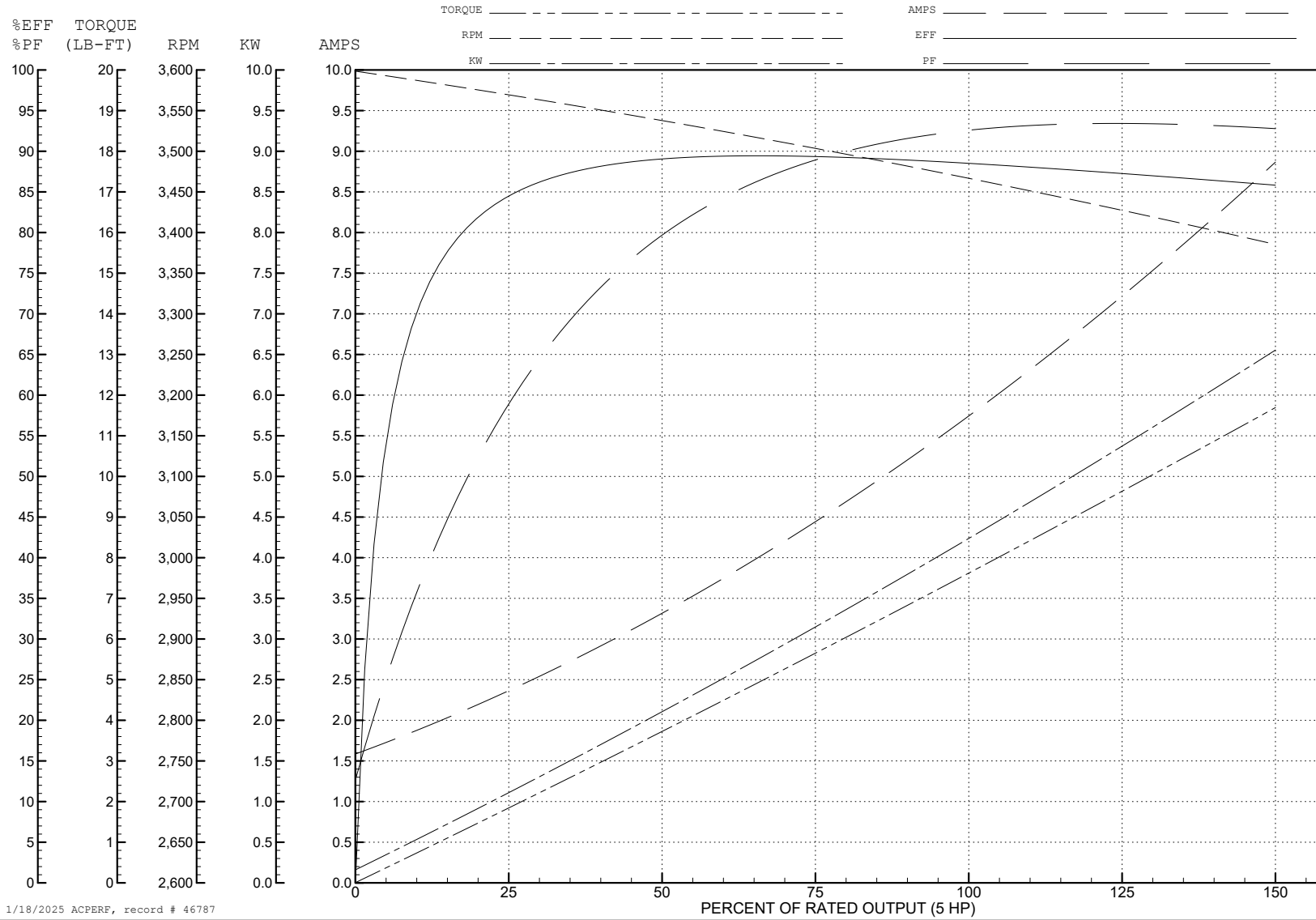
ABB Motors and Mechanical Inc.

WINDING # 36WGS042

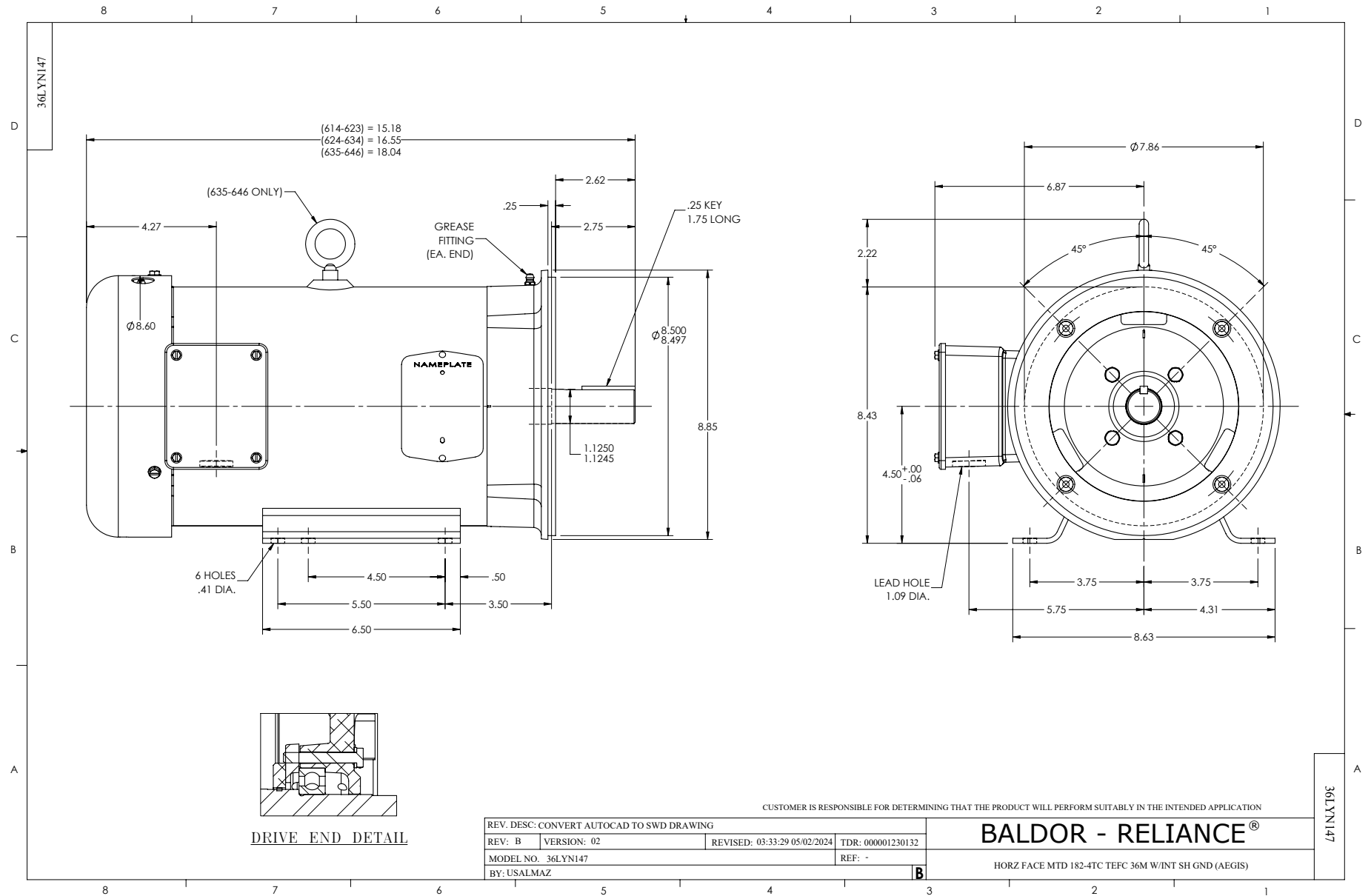
Typical performance - not guaranteed values.

5 HP 3 PH 60 HZ 3450 RPM 460 V 3630M

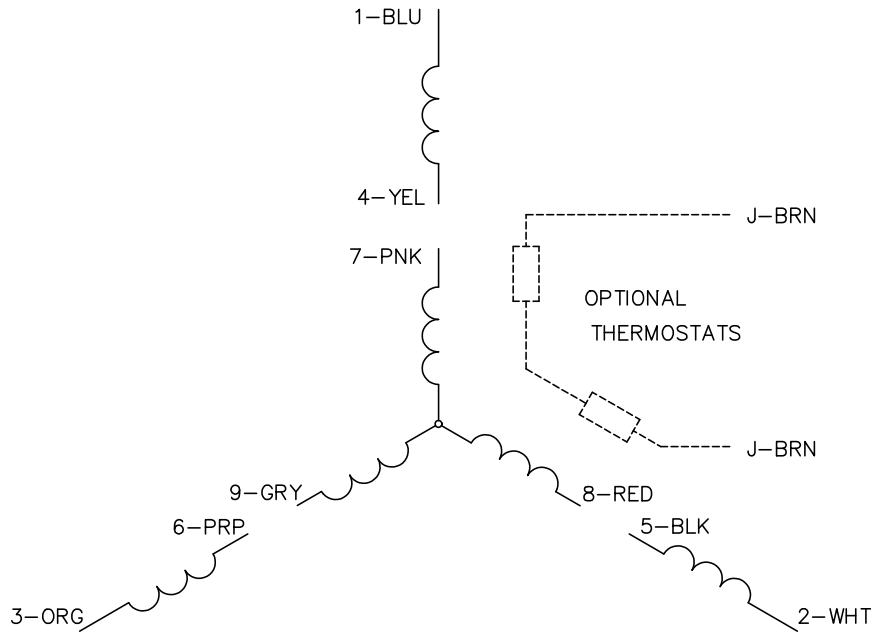
TORQUES (LB-FT): PO=33.7 PU=23.5 LR=27.5 LRA=57.2



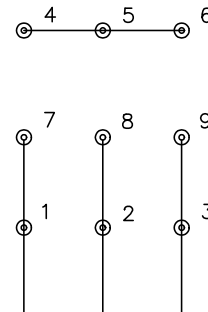
1/18/2025 ACPERF, record # 46787



CD0005

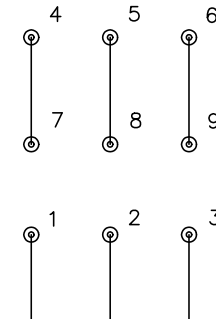


LOW VOLTAGE
(2Y)



LINE

HIGH VOLTAGE
(1Y)



LINE

NOTES:

1. INTERCHANGE ANY TWO LINE LEADS TO REVERSE ROTATION.
2. OPTIONAL THERMOSTATS ARE PROVIDED WHEN SPECIFIED.
3. ACTUAL NUMBER OF INTERNAL PARALLEL CIRCUITS MAY BE A MULTIPLE OF THOSE SHOWN ABOVE.
4. LEAD COLORS ARE OPTIONAL. LEADS MUST ALWAYS BE NUMBERED AS SHOWN.

CD0005

REV. DESC: REVISE TO SHOW OPTIONAL COLORS			
REV. LTR: E	BY: JLP	REVISED: 01/19/99 10:15	TDR: 0171435
S00000		FILE: AAA00005140	MDL: -
		MTL: -	

BALDOR ELECTRIC Co.

3PH, DV, 9 LEADS