



Customer information packet

CEM3545-G

1HP, 3450RPM, 3PH, 60HZ, 56C, TEFC, F1

Class - None

Division - Not Applicable

Specifications

Enclosure	TEFC
Frame	56C
Frame Material	Steel
Frequency	60.00 Hz
Haz Area Class and Group	None
Haz Area Division	Not Applicable
Motor Letter Type	Three Phase
Output @ Frequency	1.000 HP @ 60 HZ
Phase	3
Synchronous Speed @ Frequency	3600 RPM @ 60 HZ
Voltage @ Frequency	230.0 V @ 60 HZ 460.0 V @ 60 HZ
Agency Approvals	CSA CSA EEV NEMA PREMIUM UR
Ambient Temperature	40 °C
Auxillary Box	No Auxillary Box
Auxillary Box Lead Termination	None
Base Indicator	Rigid
Bearing Grease Type	Polyrex EM (-20F +300F)
Blower	None
Current @ Voltage	3.000 A @ 208.0 V 2.800 A @ 230.0 V 1.400 A @ 460.0 V
Design Code	B
Drip Cover	No Drip Cover
Duty Rating	CONT
Efficiency @ 100% Load	77.0 %
Electrically Isolated Bearing	Not Electrically Isolated
Feedback Device	NO FEEDBACK
Heater Indicator	No Heater

Part detail

Revision	D
Type	AC
Mech. spec.	
Base	
Status	PRD/A
Elec. spec.	35WGY474
Layout	35LYE2181
Eff. date	04-29-2024
CD Diagram	CD0005
Poles	02
Leads	9#18
Proprietary	False
Created date	12-17-2019

High Voltage Full Load Amps	1.4 a
Insulation Class	H
Inverter Code	Inverter Ready
IP Rating	NONE
KVA Code	K
Lifting Lugs	No Lifting Lugs
Locked Bearing Indicator	Locked Bearing
Motor Lead Termination	Flying Leads
Motor Standards	NEMA
Motor Type	3516M
Mounting Arrangement	F1
Number of Poles	2
Overall Length	12.23 IN
Power Factor	87
Product Family	General Purpose
Pulley Face Code	C-Face
Rodent Screen	None
Service Factor	1.15
Shaft Diameter	0.625 IN
Shaft Ground Indicator	Shaft Grounding
Shaft Rotation	Reversible
Speed	3450 rpm
Speed Code	Single Speed
Starting Method	Direct on line
Thermal Device - Bearing	None
Thermal Device - Winding	None
Vibration Sensor Indicator	No Vibration Sensor
Winding Thermal 1	None
Winding Thermal 2	None

Nameplate

NP3441LUA

CAT.NO.	CEM3545-G						
SPEC	35-0000-0515						
HP	1						
VOLTS	230/460						
AMPS	2.8/1.4						
RPM	3450						
FRAME	56C		HZ	60		PH	3
SF	1.15	CODE	K	DES	B	CLASS	H
NEMA NOM. EFF	77	PF	87				
RATING	40C AMB-CONT						
CC	010A						
ENCL	TEFC	SER					
DE	6205	ODE	6203				
VPWM INVERTER READY	SFA 3.4/1.7						
CT6-60H(10:1)VT3-60H(20:1	50HZ 1HP 190/380V 3.4/1.7A						SF1.0

AC Induction Motor Performance Data

Record # 78173

Typical performance - not guaranteed values

Winding: 35WGY474-R036		Type: 3516M	Enclosure: TEFC	
Nameplate Data			460 V, 60 Hz: High Voltage Connection	
Rated Output (HP)	1	Full Load Torque	1.47 LB-FT	
Volts	230/460	Start Configuration	direct on line	
Full Load Amps	2.8/1.4	Breakdown Torque	5.6 LB-FT	
R.P.M.	3450	Pull-up Torque	2.56 LB-FT	
Hz	60 Phase	Locked-rotor Torque	4.62 LB-FT	
NEMA Design Code	B KVA Code	Starting Current	10.5 A	
Service Factor (S.F.)	1.15	No-load Current	0.585 A	
NEMA Nom. Eff.	77 Power Factor	Line-line Res. @ 25°C	19.5 Ω	
Rating - Duty	40C AMB-CONT	Temp. Rise @ Rated Load	41°C	
S.F. Amps		Temp. Rise @ S.F. Load	47°C	
		Locked-rotor Power Factor	64.1	
		Rotor inertia	0.0443 LB-FT ²	

Load Characteristics 460 V, 60 Hz, 1 HP

% of Rated Load	25	50	75	100	125	150	S.F.
Power Factor	55	72	82	86	90	91	88
Efficiency	57.6	70.4	75.3	77	77	75.7	77
Speed	3564	3533	3500	3460	3418	3366	3435
Line amperes	0.68	0.851	1.08	1.37	1.65	2.01	1.54

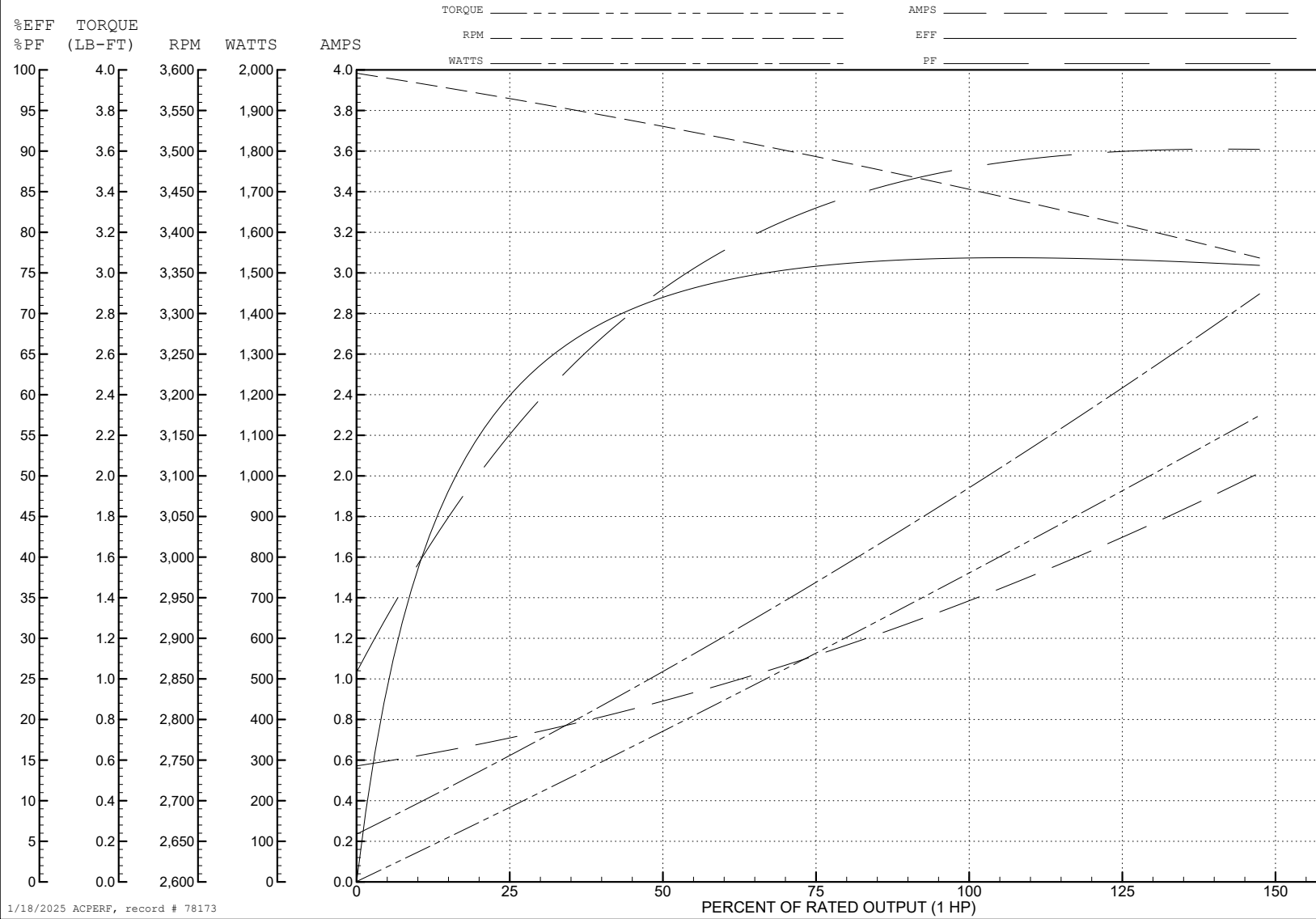
ABB Motors and Mechanical Inc.

WINDING # 35WGY474

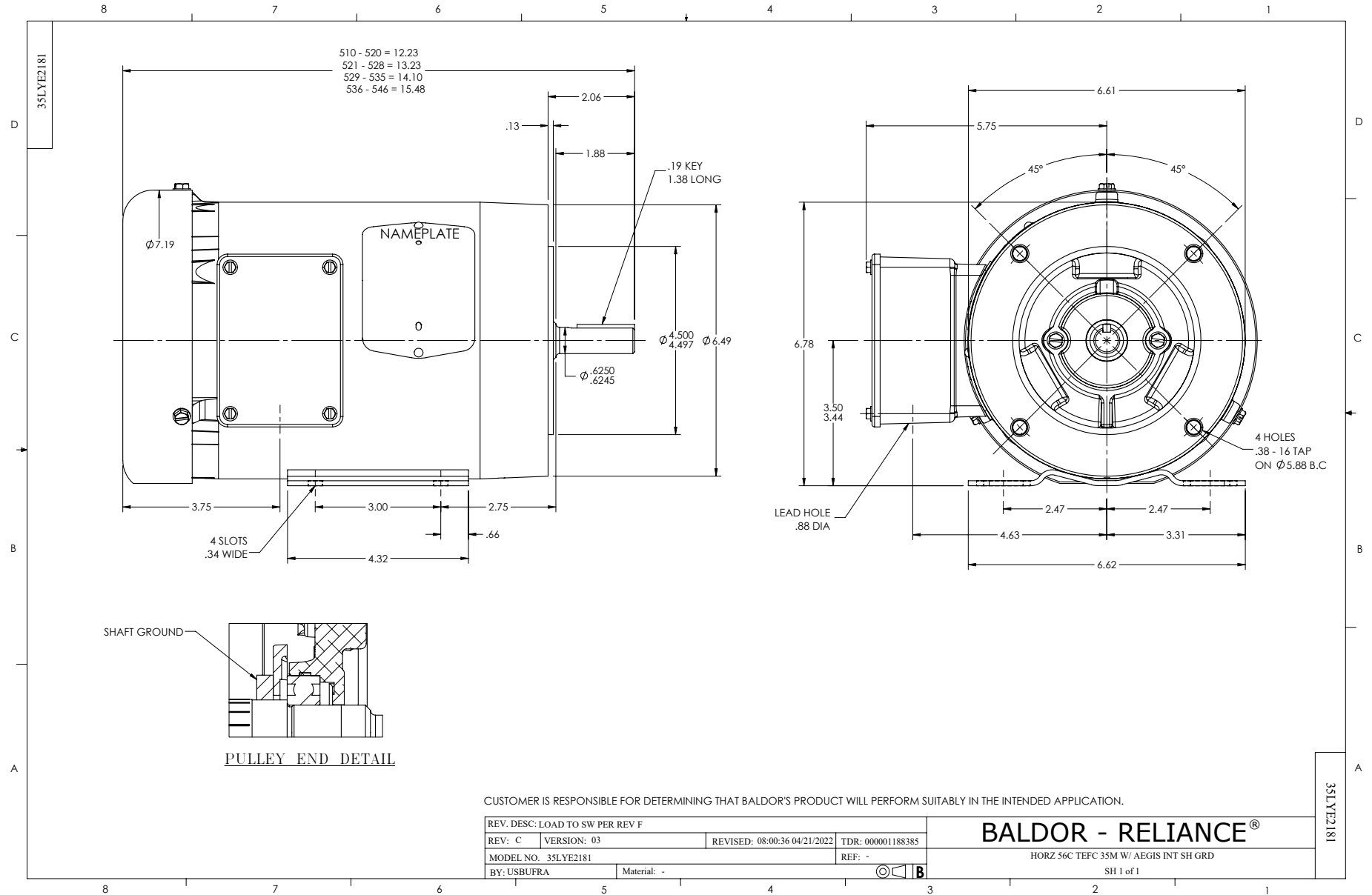
Typical performance - not guaranteed values.

1 HP 3 PH 60 HZ 3450 RPM 460 V 3516M

TORQUES (LB-FT): PO=5.6 PU=2.56 LR=4.62 LRA=10.5



1/18/2025 ACPERF, record # 78173



CD0005



LOW VOLTAGE
(2Y)



LINE

HIGH VOLTAGE
(1Y)



LINE

NOTES:

1. INTERCHANGE ANY TWO LINE LEADS TO REVERSE ROTATION.
2. OPTIONAL THERMOSTATS ARE PROVIDED WHEN SPECIFIED.
3. ACTUAL NUMBER OF INTERNAL PARALLEL CIRCUITS MAY BE A MULTIPLE OF THOSE SHOWN ABOVE.
4. LEAD COLORS ARE OPTIONAL. LEADS MUST ALWAYS BE NUMBERED AS SHOWN.

REV. DESC: REVISE TO SHOW OPTIONAL COLORS			
REV. LTR: E	BY: JLP	REVISED: 01/19/99 10:15	TDR: 0171435
S00000		FILE: AAA00005140	MDL: -
		MTL: -	

BALDOR ELECTRIC Co.

3PH, DV, 9 LEADS

CD0005