

ABB BALDOR RELIANCE III

Customer information packet

CEM3312T

10HP, 3500RPM, 3PH, 60HZ, 213TC, 3728M, OPSB, F

Class - None

Division - Not Applicable

Specifications

Enclosure	OPSB
Frame	213TC
Frame Material	Steel
Frequency	60.00 Hz
Haz Area Class and Group	None
Haz Area Division	Not Applicable
Motor Letter Type	Three Phase
Output @ Frequency	10.000 HP @ 60 HZ
Phase	3
Synchronous Speed @ Frequency	3600 RPM @ 60 HZ
Voltage @ Frequency	230.0 V @ 60 HZ 460.0 V @ 60 HZ
Agency Approvals	CURUSEEV NEMA PREMIUM
Ambient Temperature	40 °C
Auxiliary Box	NO AUXILLARY BOX
Auxiliary Box Lead Termination	None
Base Indicator	Rigid
Bearing Grease Type	Polyrex EM (-20F +300F)
Blower	None
Current @ Voltage	12.000 A @ 460.0 V 24.000 A @ 230.0 V 26.000 A @ 208.0 V
Design Code	B
Drip Cover	No Drip Cover
Duty Rating	CONT
Efficiency @ 100% Load	90.2 %
Electrically Isolated Bearing	Not Electrically Isolated
Feedback Device	NO FEEDBACK
Front Shaft Indicator	None
Heater Indicator	No Heater
High Voltage Full Load Amps	12.0 a

Part Detail

Revision	F
Type	AC
Mech. spec.	37B102
Base	
Status	PRD/A
Elec. spec.	37WGL866
Layout	37LYB102
Eff. date	06-24-2025
CD Diagram	CD0005
Poles	02
Leads	9#14
Proprietary	False
Created date	02-02-2021

Insulation Class	F
Inverter Code	Inverter Ready
IP Rating	NONE
KVA Code	H
Lifting Lugs	Standard Lifting Lugs
Locked Bearing Indicator	Locked Bearing
Motor Lead Quantity/Wire Size	9 @ 14 AWG
Motor Lead Termination	Flying Leads
Motor Standards	NEMA
Motor Type	3728M
Mounting Arrangement	F1
Number of Poles	2
Overall Length	17.07 IN
Power Factor	85
Product Family	General Purpose
Pulley End Bearing Type	Ball
Pulley Face Code	C-Face
Pulley Shaft Indicator	Standard
Rodent Screen	None
Service Factor	1.15
Shaft Diameter	1.375 IN
Shaft Ground Indicator	No Shaft Grounding
Shaft Rotation	Reversible
Shaft Slinger Indicator	No Slinger
Speed	3500 rpm
Speed Code	Single Speed
Starting Method	Direct on line
Thermal Device - Bearing	None
Thermal Device - Winding	None
Vibration Sensor Indicator	No Vibration Sensor
Winding Thermal 1	None
Winding Thermal 2	None

Nameplate

NP3553LUA									
CAT.NO.	CEM3312T								
SPEC.	37B102L866G1								
HP	10								
VOLTS	230/460								
AMPS	24/12								
RPM	3500								
FRAME	213TC	HZ	60	PH	3				
SF	1.15	CODE	H	DES	B	CLASS	F		
NEMA NOM. EFF	90.2	PF	85						
RATING	40C AMB-CONT								
CC	010A								
ENCL	OPSB	SN							
DE	6307	ODE	6206						
VPWM INVERTER READY									
CT30-60(2:1) VT3-60(20:1)									
USABLE AT	50HZ 10HP 190/380V 28.4/14.2A							SF1.0	

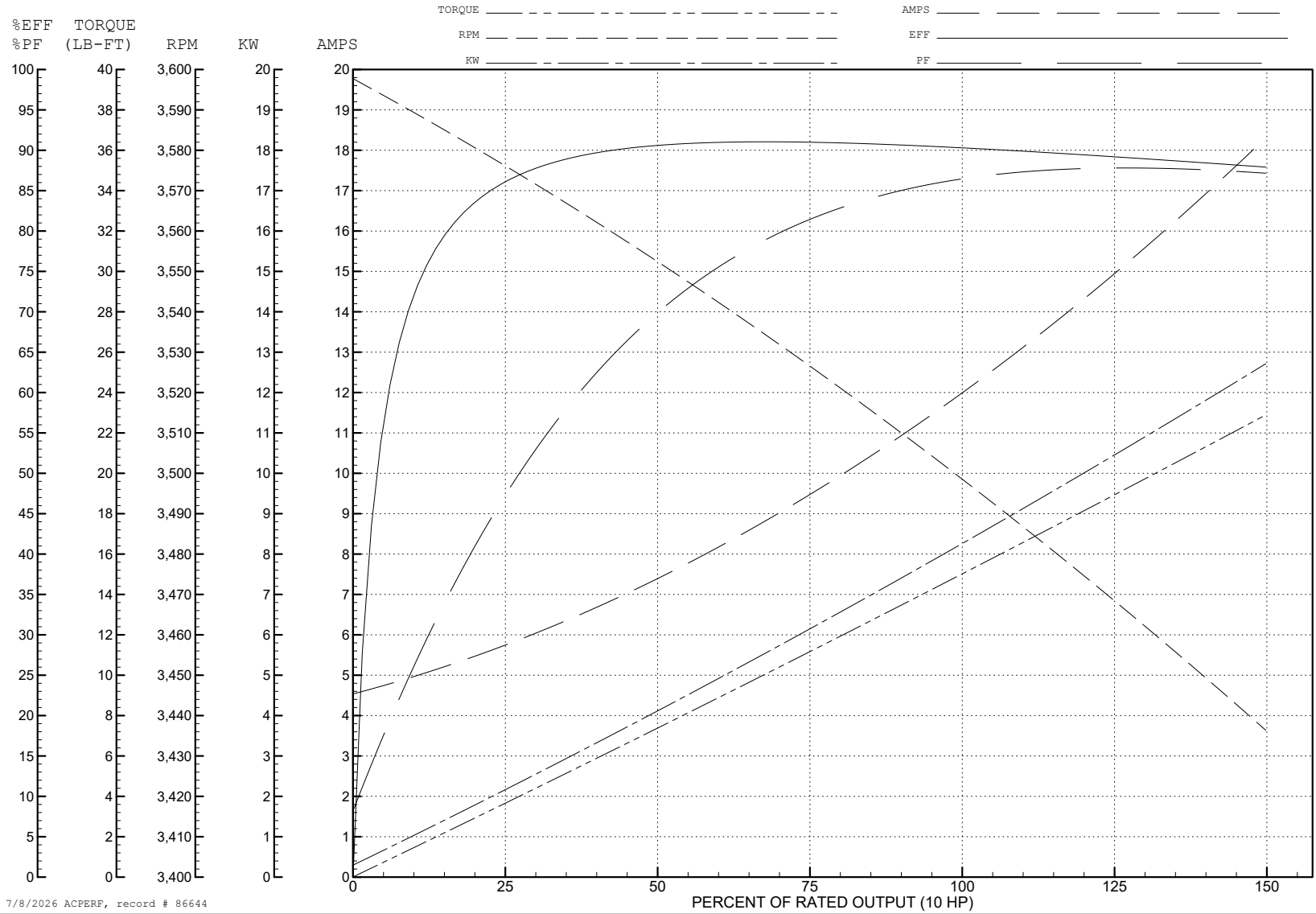
ABB Motors and Mechanical Inc.

WINDING # 37WGL866

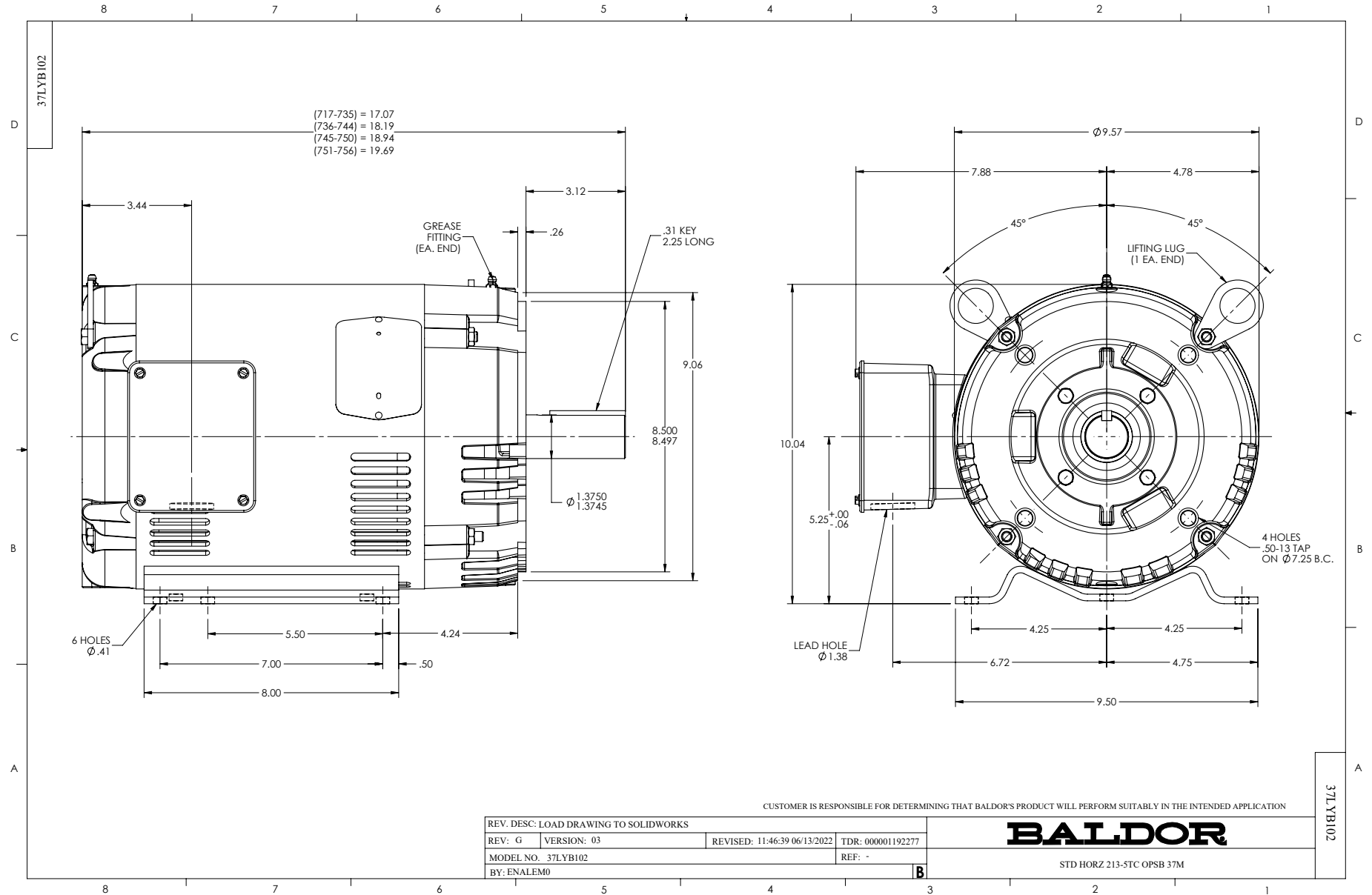
Typical performance - not guaranteed values.

10 HP 3 PH 60 HZ 3475 RPM 460 V 3728M

TORQUES (LB-FT): PO=50.8 PU=23.7 LR=29 LRA=81.5



7/8/2026 ACPERF, record # 86644



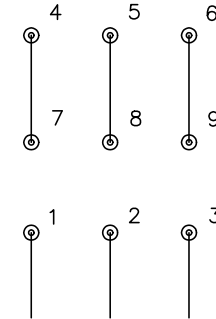
CD0005



LOW VOLTAGE
(2Y)



HIGH VOLTAGE
(1Y)



NOTES:

1. INTERCHANGE ANY TWO LINE LEADS TO REVERSE ROTATION.
2. OPTIONAL THERMOSTATS ARE PROVIDED WHEN SPECIFIED.
3. ACTUAL NUMBER OF INTERNAL PARALLEL CIRCUITS MAY BE A MULTIPLE OF THOSE SHOWN ABOVE.
4. LEAD COLORS ARE OPTIONAL. LEADS MUST ALWAYS BE NUMBERED AS SHOWN.

CD0005

REV. DESC: REVISE TO SHOW OPTIONAL COLORS

REV. LTR: E BY: JLP REVISED: 01/19/99 10:15 TDR: 0171435

500000

FILE: AAA00005140

MDL: -

MTL: -

BALDOR ELECTRIC Co.

3PH, DV, 9 LEADS