



---

# Customer information packet

## CEM3305T-G

3HP, 1165RPM, 3PH, 60HZ, 213TC, 3734M, OPSB, F1

Class - None

Division - Not Applicable

## Specifications

Enclosure	OPSB
Frame	213TC
Frame Material	Steel
Frequency	60.00 Hz
Haz Area Class and Group	None
Haz Area Division	Not Applicable
Motor Letter Type	Three Phase
Output @ Frequency	3.000 HP @ 60 HZ
Phase	3
Synchronous Speed @ Frequency	1200 RPM @ 60 HZ
Voltage @ Frequency	230.0 V @ 60 HZ 460.0 V @ 60 HZ
Agency Approvals	CSA EEV CURUSEEV NEMA PREMIUM NEMA_PREMIUM UR
Ambient Temperature	40 °C
Auxillary Box	No Auxillary Box
Auxillary Box Lead Termination	None
Base Indicator	Rigid
Bearing Grease Type	Polyrex EM (-20F +300F)
Blower	None
Current @ Voltage	9.000 A @ 230.0 V 4.500 A @ 460.0 V
Design Code	B
Drip Cover	No Drip Cover
Duty Rating	CONT
Efficiency @ 100% Load	88.5 %
Electrically Isolated Bearing	Not Electrically Isolated
Feedback Device	NO FEEDBACK
Heater Indicator	No Heater

## Part detail

Revision	E
Type	AC
Mech. spec.	
Base	
Status	PRD/A
Elec. spec.	37WGR333
Layout	37LYK447
Eff. date	06-11-2024
CD Diagram	CD0005
Poles	06
Leads	9#14
Proprietary	False
Created date	02-24-2020

High Voltage Full Load Amps	4.5 a
Insulation Class	H
Inverter Code	Inverter Ready
IP Rating	NONE
KVA Code	K
Lifting Lugs	Standard Lifting Lugs
Locked Bearing Indicator	Locked Bearing
Motor Lead Termination	Flying Leads
Motor Standards	NEMA
Motor Type	3734M
Mounting Arrangement	F1
Number of Poles	6
Overall Length	17.07 IN
Power Factor	70
Product Family	General Purpose
Pulley Face Code	C-Face
Rodent Screen	None
Service Factor	1.15
Shaft Diameter	1.375 IN
Shaft Ground Indicator	Shaft Grounding
Shaft Rotation	Reversible
Speed	1165 rpm
Speed Code	Single Speed
Starting Method	Direct on line
Thermal Device - Bearing	None
Thermal Device - Winding	None
Vibration Sensor Indicator	No Vibration Sensor
Winding Thermal 1	None
Winding Thermal 2	None

**Nameplate**

**NP3553LUA**

<b>CAT.NO.</b>	CEM3305T-G						
<b>SPEC.</b>	37-0000-0218						
<b>HP</b>	3						
<b>VOLTS</b>	230/460						
<b>AMPS</b>	9/4.5						
<b>RPM</b>	1165						
<b>FRAME</b>	213TC		<b>HZ</b>	60		<b>PH</b>	3
<b>SF</b>	1.15	<b>CODE</b>	K	<b>DES</b>	B	<b>CLASS</b>	H
<b>NEMA NOM. EFF</b>	88.5	<b>PF</b>	70				
<b>RATING</b>	40C AMB-CONT						
<b>CC</b>	010A						
<b>ENCL</b>	OPSB	<b>SN</b>					
<b>DE</b>	6307	<b>ODE</b>	6206				
<b>VPWM INVERTER READY</b>							
<b>CT30-60(2:1) VT3-60(20:1)</b>							
<b>USABLE AT</b>	N/A						

**AC Induction Motor Performance Data**

Record # 53382

Typical performance - not guaranteed values

<b>Winding: 37WGR333-R006</b>		<b>Type: 3734M</b>		<b>Enclosure: OPSB</b>	
<b>Nameplate Data</b>			<b>460 V, 60 Hz: High Voltage Connection</b>		
<b>Rated Output (HP)</b>	3	<b>Full Load Torque</b>	13.59 LB-FT		
<b>Volts</b>	230/460	<b>Start Configuration</b>	direct on line		
<b>Full Load Amps</b>	9/4.5	<b>Breakdown Torque</b>	46.48 LB-FT		
<b>R.P.M.</b>	1165	<b>Pull-up Torque</b>	21.64 LB-FT		
<b>Hz</b>	60 <b>Phase</b>	3	<b>Locked-rotor Torque</b>	35.84 LB-FT	
<b>NEMA Design Code</b>	<b>B KVA Code</b>	K	<b>Starting Current</b>	31.11 A	
<b>Service Factor (S.F.)</b>		1.15	<b>No-load Current</b>	2.38 A	
<b>NEMA Nom. Eff.</b>	88.5 <b>Power Factor</b>	71	<b>Line-line Res. @ 25°C</b>	3.48 Ω	
<b>Rating - Duty</b>	40C AMB-CONT		<b>Temp. Rise @ Rated Load</b>	20°C	
<b>S.F. Amps</b>			<b>Temp. Rise @ S.F. Load</b>	24°C	
			<b>Locked-rotor Power Factor</b>	25.2	
			<b>Rotor inertia</b>	0.846 LB-FT <sup>2</sup>	

**Load Characteristics 460 V, 60 Hz, 3 HP**

<b>% of Rated Load</b>	<b>25</b>	<b>50</b>	<b>75</b>	<b>100</b>	<b>125</b>	<b>150</b>	<b>S.F.</b>
<b>Power Factor</b>	34	53	64	71	74	76	73
<b>Efficiency</b>	82.9	88.4	89.4	88.9	88	86.1	88.4
<b>Speed</b>	1192	1185	1177	1168	1158	1147	1161
<b>Line amperes</b>	2.57	3.06	3.73	4.49	5.41	6.45	5.04

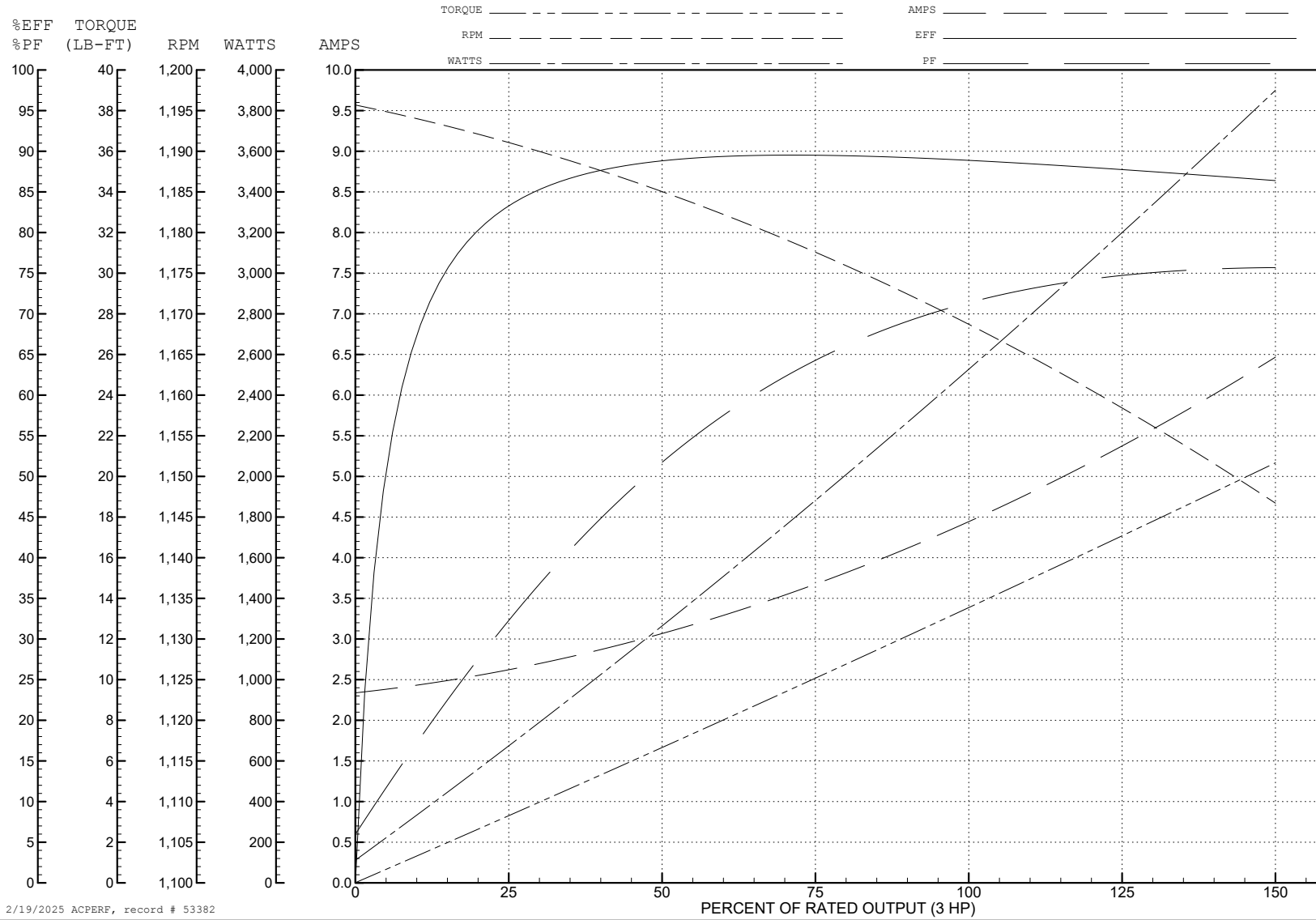
ABB Motors and Mechanical Inc.

WINDING # 37WGR333

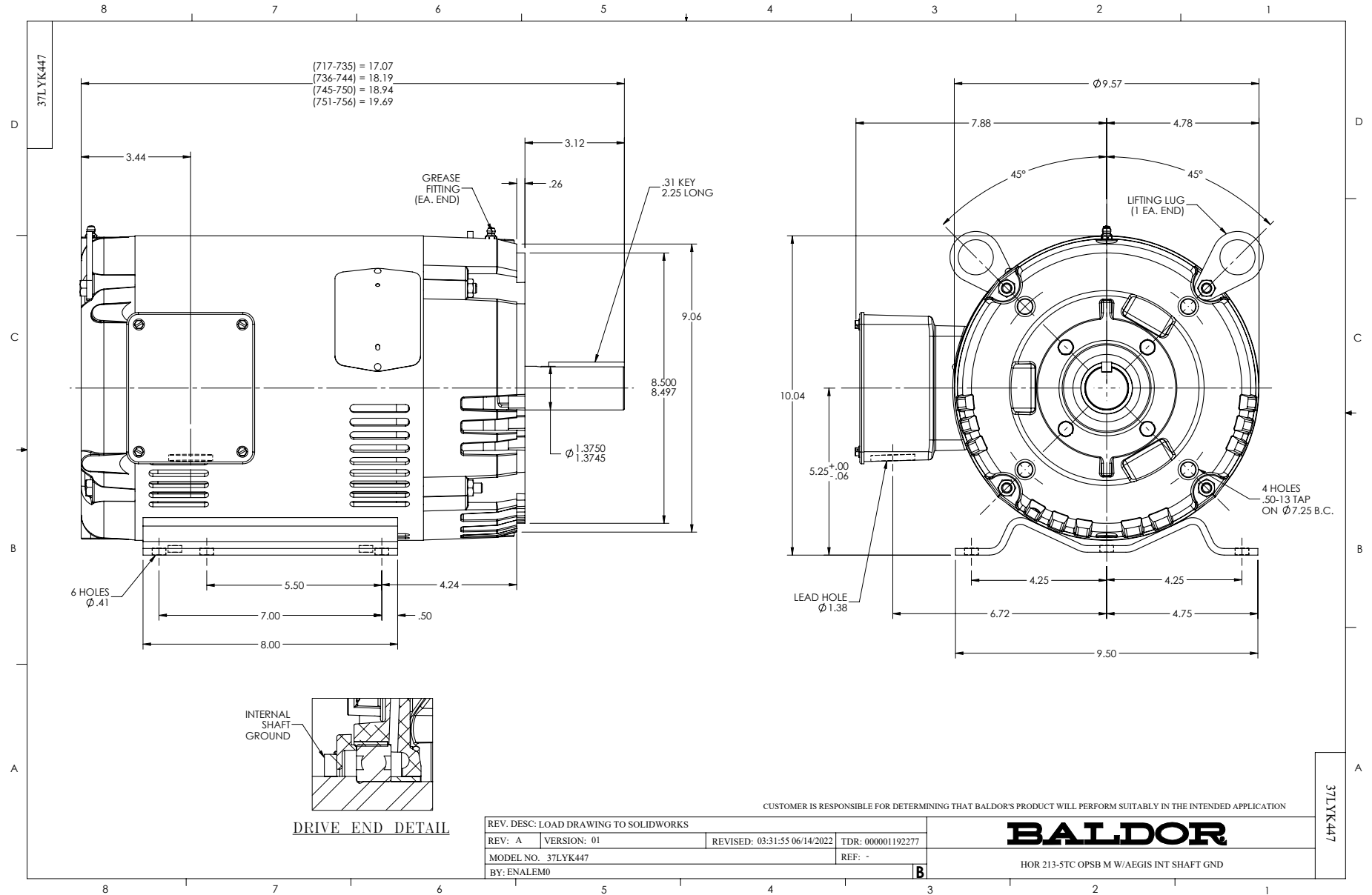
3 HP 3 PH 60 HZ 1165 RPM 460 V 3734M

Typical performance - not guaranteed values.

TORQUES (LB-FT): PO=46.48 PU=21.64 LR=35.84 LRA=31.11



2/19/2025 ACPERF, record # 53382



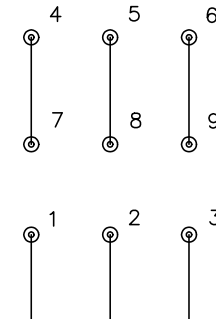
CD0005



LOW VOLTAGE  
(2Y)



HIGH VOLTAGE  
(1Y)



NOTES:

1. INTERCHANGE ANY TWO LINE LEADS TO REVERSE ROTATION.
2. OPTIONAL THERMOSTATS ARE PROVIDED WHEN SPECIFIED.
3. ACTUAL NUMBER OF INTERNAL PARALLEL CIRCUITS MAY BE A MULTIPLE OF THOSE SHOWN ABOVE.
4. LEAD COLORS ARE OPTIONAL. LEADS MUST ALWAYS BE NUMBERED AS SHOWN.

REV. DESC: REVISE TO SHOW OPTIONAL COLORS			
REV. LTR: E	BY: JLP	REVISED: 01/19/99 10:15	TDR: 0171435
S00000		FILE: AAA00005140	MDL: -
		MTL: -	

**BALDOR ELECTRIC Co.**

3PH, DV, 9 LEADS

CD0005