

ABB BALDOR RELIANCE III

Customer information packet

CEM3219T

7.5HP, 3450RPM, 3PH, 60HZ, 184TC, 3632M, OPSB

Class - None

Division - Not Applicable

Specifications

Enclosure	OPSB
Frame	184TC
Frame Material	Steel
Frequency	60.00 Hz
Haz Area Class and Group	None
Haz Area Division	Not Applicable
Motor Letter Type	Three Phase
Output @ Frequency	7.500 HP @ 60 HZ
Phase	3
Synchronous Speed @ Frequency	3600 RPM @ 60 HZ
Voltage @ Frequency	460.0 V @ 60 HZ 230.0 V @ 60 HZ
Agency Approvals	CURUSEEV NEMA PREMIUM NEMA PREMIUM (OLD LOGO)
Ambient Temperature	40 °C
Auxiliary Box	NO AUXILLARY BOX
Auxiliary Box Lead Termination	None
Base Indicator	Rigid
Bearing Grease Type	Polyrex EM (-20F +300F)
Blower	None
Current @ Voltage	18.000 A @ 208.0 V 8.600 A @ 460.0 V 17.200 A @ 230.0 V
Design Code	A
Drip Cover	No Drip Cover
Duty Rating	CONT
Efficiency @ 100% Load	88.5 %
Electrically Isolated Bearing	Not Electrically Isolated
Feedback Device	NO FEEDBACK
Front Face Code	Standard
Front Shaft Indicator	None

Part Detail

Revision	T
Type	AC
Mech. spec.	36B102
Base	
Status	PRD/A
Elec. spec.	36WGS516
Layout	36LYB102
Eff. date	01-08-2026
CD Diagram	CD0005
Poles	02
Leads	9#16
Proprietary	False
Created date	07-30-2010

Heater Indicator	No Heater
High Voltage Full Load Amps	8.6 a
Insulation Class	F
Inverter Code	Not Inverter
KVA Code	L
Lifting Lugs	No Lifting Lugs
Locked Bearing Indicator	Locked Bearing
Motor Lead Exit	Ko Box
Motor Lead Quantity/Wire Size	9 @ 16 AWG
Motor Lead Termination	Flying Leads
Motor Standards	NEMA
Motor Type	3632M
Mounting Arrangement	F1
Number of Poles	2
Overall Length	15.00 IN
Power Factor	89
Product Family	General Purpose
Pulley End Bearing Type	Ball
Pulley Face Code	C-Face
Pulley Shaft Indicator	Standard
Rodent Screen	None
Service Factor	1.15
Shaft Diameter	1.125 IN
Shaft Extension Location	Pulley End
Shaft Ground Indicator	No Shaft Grounding
Shaft Rotation	Reversible
Shaft Slinger Indicator	No Slinger
Speed	3450 rpm
Speed Code	Single Speed
Starting Method	Direct on line
Thermal Device - Bearing	None
Thermal Device - Winding	None
Vibration Sensor Indicator	No Vibration Sensor
Winding Thermal 1	None

Winding Thermal 2

None

Nameplate

NP3553LUA									
CAT.NO.	CEM3219T								
SPEC.	36B102S516G1								
HP	7.5								
VOLTS	230/460								
AMPS	17.2/8.6								
RPM	3450								
FRAME	184TC	HZ	60	PH	3				
SF	1.15	CODE	L	DES	A	CLASS	F		
NEMA NOM. EFF	88.5	PF	89						
RATING	40C AMB-CONT								
CC	010A								
ENCL	OPSB	SN							
DE	6206	ODE	6205						
VPWM INVERTER READY									
CT30-60(2:1) VT3-60(20:1)									
USABLE AT	50HZ 7.5HP 190/380V 20.8/10.4A							SF1.0	

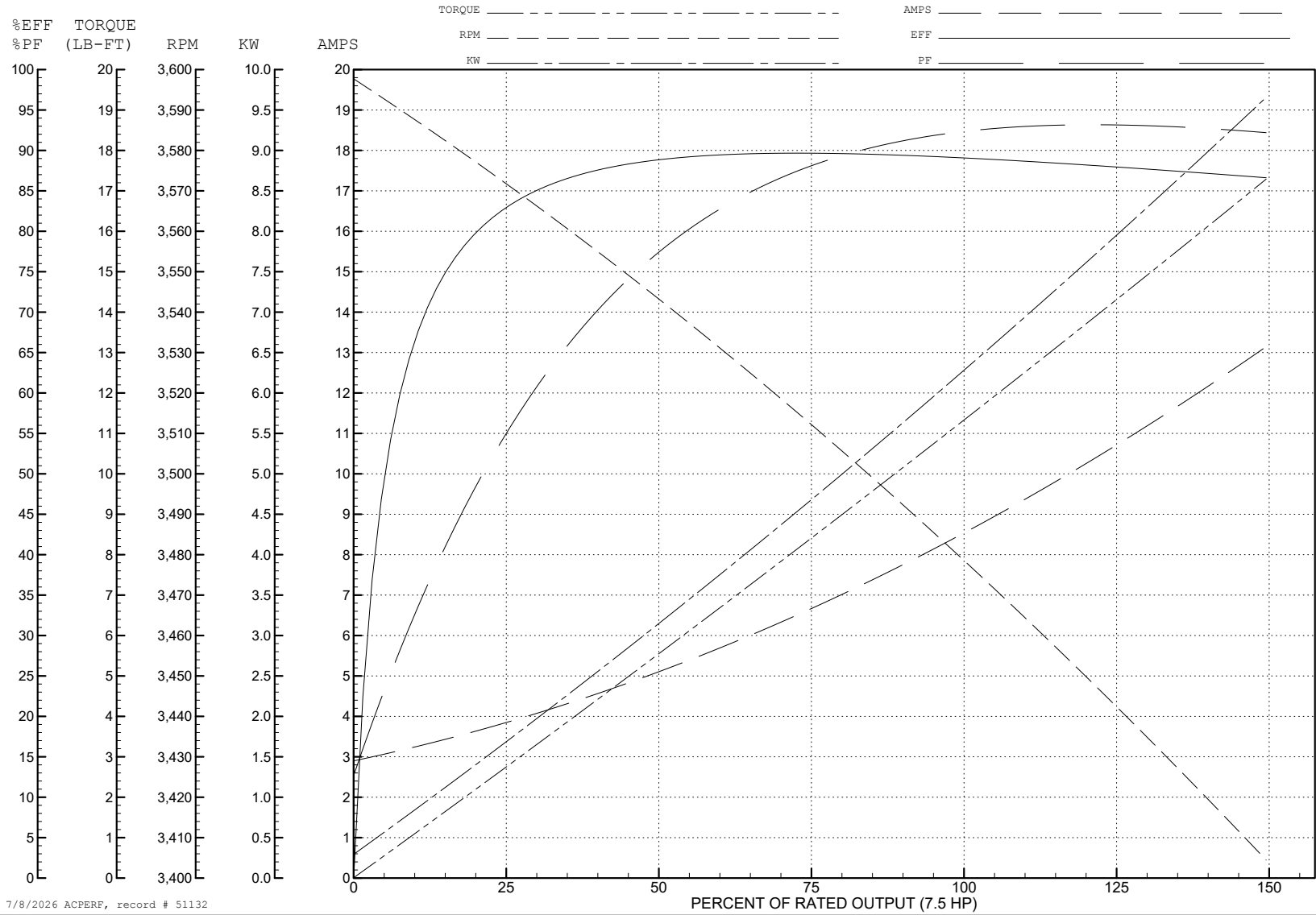
ABB Motors and Mechanical Inc.

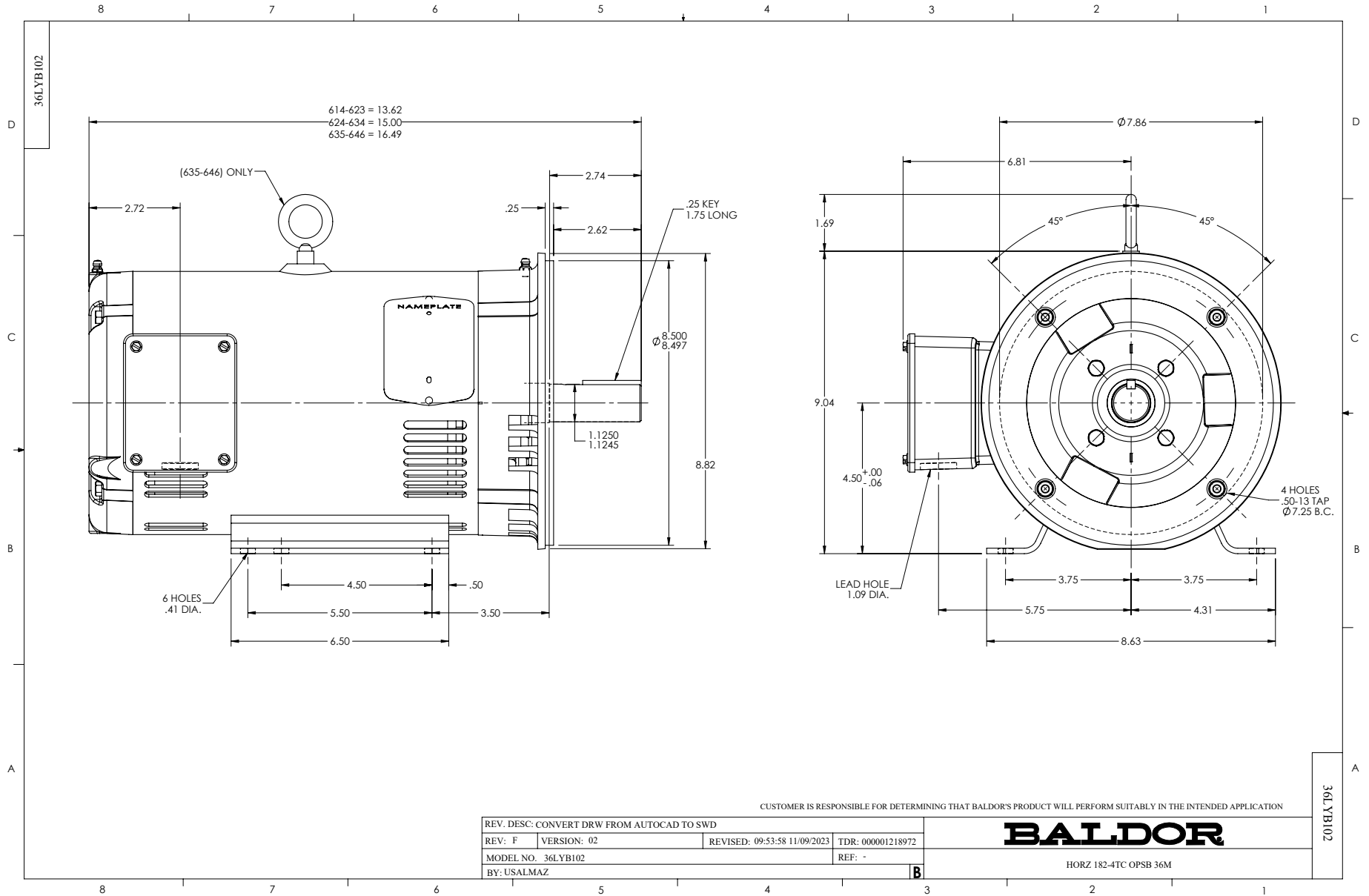
WINDING # 36WGS516

Typical performance - not guaranteed values.

7.5 HP 3 PH 60 HZ 3450 RPM 460 V 3632M

TORQUES (LB-FT): PO=55.2 PU=37 LR=42.6 LRA=86.3





CD0005



LOW VOLTAGE
(2Y)



HIGH VOLTAGE
(1Y)



NOTES:

1. INTERCHANGE ANY TWO LINE LEADS TO REVERSE ROTATION.
2. OPTIONAL THERMOSTATS ARE PROVIDED WHEN SPECIFIED.
3. ACTUAL NUMBER OF INTERNAL PARALLEL CIRCUITS MAY BE A MULTIPLE OF THOSE SHOWN ABOVE.
4. LEAD COLORS ARE OPTIONAL. LEADS MUST ALWAYS BE NUMBERED AS SHOWN.

CD0005

REV. DESC: REVISE TO SHOW OPTIONAL COLORS

REV. LTR: E BY: JLP REVISED: 01/19/99 10:15 TDR: 0171435

500000

FILE: AAA00005140

MDL: -

MTL: -

BALDOR ELECTRIC Co.

3PH, DV, 9 LEADS