



Customer information packet

CEM3156T-G

1HP, 1170RPM, 3PH, 60HZ, 145TC, 3526M, OPSB, F1

Class - None

Division - Not Applicable

Specifications

Enclosure	OPSB
Frame	145TC
Frame Material	Steel
Frequency	60.00 Hz
Haz Area Class and Group	None
Haz Area Division	Not Applicable
Motor Letter Type	Three Phase
Output @ Frequency	1.000 HP @ 60 HZ
Phase	3
Synchronous Speed @ Frequency	1200 RPM @ 60 HZ
Voltage @ Frequency	230.0 V @ 60 HZ 460.0 V @ 60 HZ
Agency Approvals	CSA EEV NEMA PREMIUM UR
Ambient Temperature	40 °C
Auxillary Box	No Auxillary Box
Auxillary Box Lead Termination	None
Base Indicator	Rigid
Bearing Grease Type	Polyrex EM (-20F +300F)
Blower	None
Current @ Voltage	1.500 A @ 460.0 V 3.000 A @ 230.0 V
Design Code	B
Drip Cover	No Drip Cover
Duty Rating	CONT
Efficiency @ 100% Load	82.5 %
Electrically Isolated Bearing	Not Electrically Isolated
Feedback Device	NO FEEDBACK
Front Shaft Indicator	None
Heater Indicator	No Heater
High Voltage Full Load Amps	1.5 a

Part detail

Revision	D
Type	AC
Mech. spec.	35E2907
Base	
Status	PRD/A
Elec. spec.	35WGG019
Layout	35LY-000-271
Eff. date	06-11-2024
CD Diagram	CD0005
Poles	06
Leads	9#18
Proprietary	False
Created date	02-23-2023

Insulation Class	H
Inverter Code	Inverter Ready
KVA Code	J
Lifting Lugs	No Lifting Lugs
Locked Bearing Indicator	Locked Bearing
Motor Lead Quantity/Wire Size	9 @ 18 AWG
Motor Lead Termination	Flying Leads
Motor Standards	NEMA
Motor Type	3524M
Mounting Arrangement	F1
Number of Poles	6
Overall Length	12.12 IN
Power Factor	67
Product Family	General Purpose
Pulley End Bearing Type	Ball
Pulley Face Code	Standard
Pulley Shaft Indicator	Standard
Rodent Screen	None
Service Factor	1.15
Shaft Diameter	0.875 IN
Shaft Ground Indicator	Shaft Grounding
Shaft Rotation	Reversible
Speed	1170 rpm
Speed Code	Single Speed
Starting Method	Direct on line
Thermal Device - Bearing	None
Thermal Device - Winding	None
Vibration Sensor Indicator	No Vibration Sensor
Winding Thermal 1	None
Winding Thermal 2	None

Nameplate

NP3553LUA										
CAT.NO.	CEM3156T-G									
SPEC.	35E2907G019									
HP	1									
VOLTS	230/460									
AMPS	3/1.5									
RPM	1170									
FRAME	145TC		HZ	60		PH	3			
SF	1.15	CODE	J	DES	B	CLASS	H			
NEMA NOM. EFF	82.5	PF	67							
RATING	40C AMB-CONT									
CC										
ENCL	OPSB	SN								
DE	6205	ODE								
VPWM INVERTER READY	SFA 3.7/1.85									
CT30-60(2:1) VT3-60(20:1)										
USABLE AT	50HZ 1HP 190/380V 4/2A							SF1.0		

AC Induction Motor Performance Data

Record # 53337

Typical performance - not guaranteed values

Winding: 35WGM850-R016		Type: 3524M		Enclosure: OPSB	
Nameplate Data			460 V, 60 Hz: High Voltage Connection		
Rated Output (HP)		1	Full Load Torque		4.5 LB-FT
Volts		230/460	Start Configuration		direct on line
Full Load Amps		3.6/1.8	Breakdown Torque		14 LB-FT
R.P.M.		1155	Pull-up Torque		9.71 LB-FT
Hz	60	Phase	3	Locked-rotor Torque	10.2 LB-FT
NEMA Design Code	B	KVA Code	J	Starting Current	9.83 A
Service Factor (S.F.)		1.15	No-load Current		1.16 A
NEMA Nom. Eff.	82.5	Power Factor	64	Line-line Res. @ 25°C	16.2 Ω
Rating - Duty		40C	AMB-CONT	Temp. Rise @ Rated Load	34°C
S.F. Amps				Temp. Rise @ S.F. Load	41°C
				Locked-rotor Power Factor	41.9
				Rotor inertia	0.143 LB-FT ²

Load Characteristics 460 V, 60 Hz, 1 HP

% of Rated Load	25	50	75	100	125	150	S.F.
Power Factor	27	44	56	64	70	73	68
Efficiency	70.8	80.3	82.9	82.8	81.8	80	82.2
Speed	1189	1179	1169	1156	1142	1126	1148
Line amperes	1.21	1.33	1.51	1.76	2.04	2.38	1.93

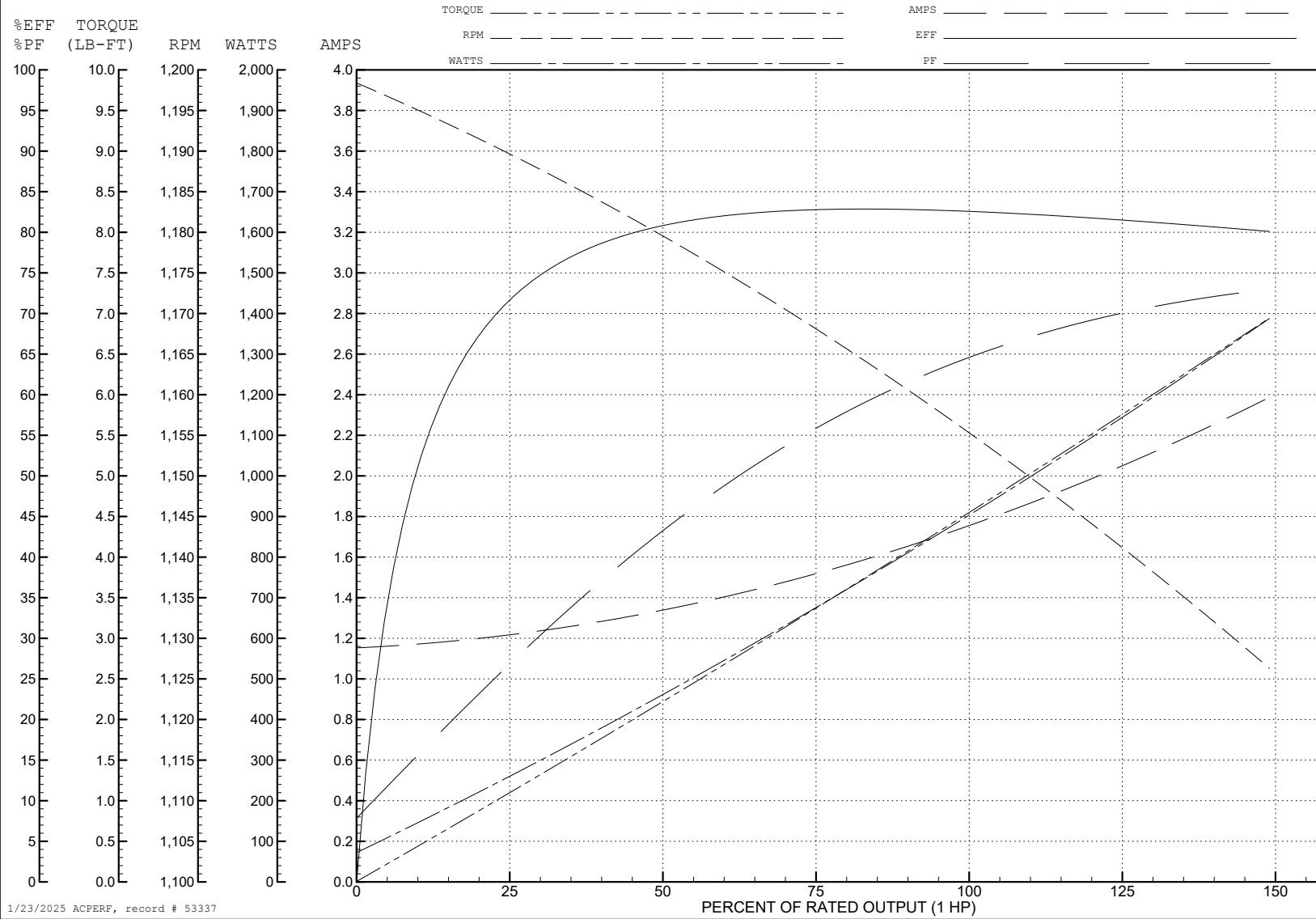
ABB Motors and Mechanical Inc.

WINDING # 35WGM850

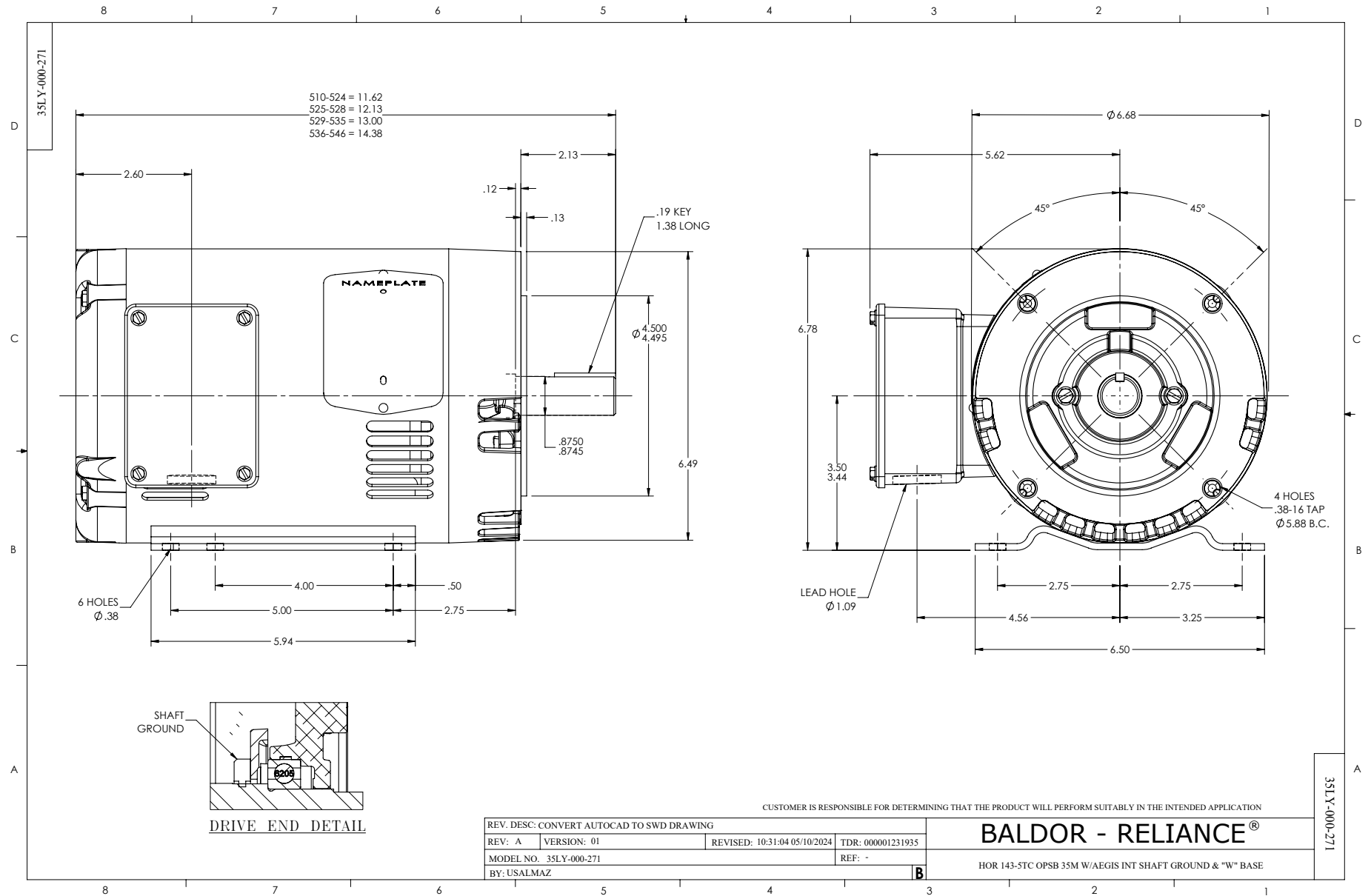
Typical performance - not guaranteed values.

1 HP 3 PH 60 HZ 1155 RPM 460 V 3524M

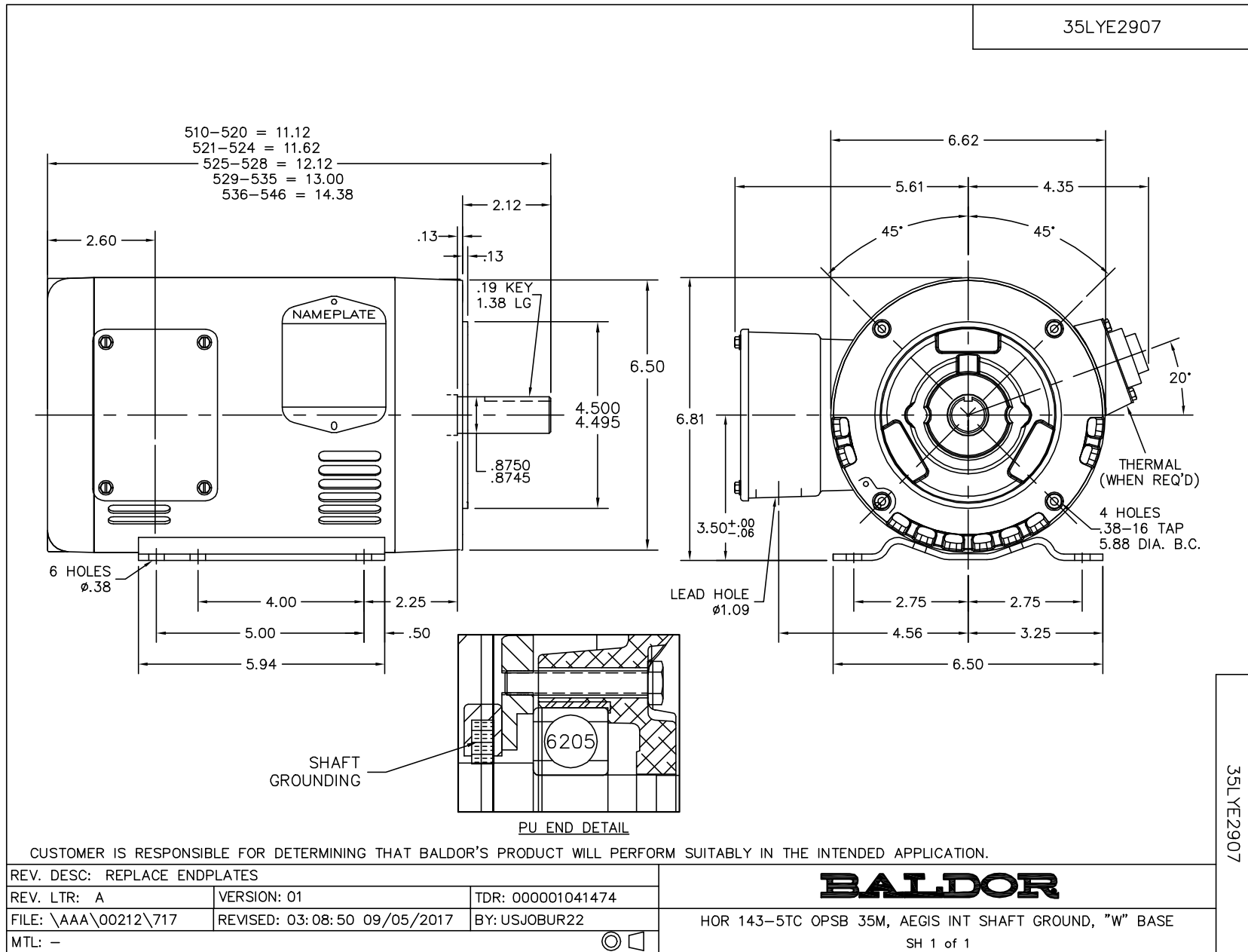
TORQUES (LB-FT): PO=14 PU=9.71 LR=10.2 LRA=9.83



1/23/2025 ACPERF, record # 53337



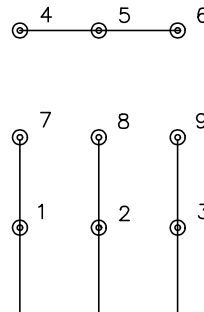
35LYE2907



CD0005

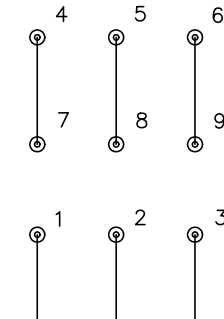


LOW VOLTAGE
(2Y)



LINE

HIGH VOLTAGE
(1Y)



LINE

NOTES:

1. INTERCHANGE ANY TWO LINE LEADS TO REVERSE ROTATION.
2. OPTIONAL THERMOSTATS ARE PROVIDED WHEN SPECIFIED.
3. ACTUAL NUMBER OF INTERNAL PARALLEL CIRCUITS MAY BE A MULTIPLE OF THOSE SHOWN ABOVE.
4. LEAD COLORS ARE OPTIONAL. LEADS MUST ALWAYS BE NUMBERED AS SHOWN.

REV. DESC: REVISE TO SHOW OPTIONAL COLORS			
REV. LTR: E	BY: JLP	REVISED: 01/19/99 10:15	TDR: 0171435
S00000		FILE: AAA00005140	MDL: -
		MTL: -	

BALDOR ELECTRIC Co.

3PH, DV, 9 LEADS

CD0005