

ABB BALDOR RELIANCE III

Customer information packet CEM3155T-G

2HP, 3450RPM, 3PH, 60HZ, 143TC, OPSB, F1

Class - None

Division - Not Applicable

Specifications

| | |
|---------------------------------------|--|
| Enclosure | OPSB |
| Frame | 143TC |
| Frame Material | Steel |
| Frequency | 60.00 Hz |
| Haz Area Class and Group | None |
| Haz Area Division | Not Applicable |
| Motor Letter Type | Three Phase |
| Output @ Frequency | 2.000 HP @ 60 HZ |
| Phase | 3 |
| Synchronous Speed @ Frequency | 3600 RPM @ 60 HZ |
| Voltage @ Frequency | 230.0 V @ 60 HZ 460.0 V @ 60 HZ |
| Agency Approvals | CSA CSA EEV NEMA PREMIUM UR |
| Ambient Temperature | 40 °C |
| Auxiliary Box | NO AUXILLARY BOX |
| Auxiliary Box Lead Termination | None |
| Base Indicator | Rigid |
| Bearing Grease Type | Polyrex EM (-20F +300F) |
| Blower | None |
| Current @ Voltage | 5.000 A @ 230.0 V 2.500 A @ 460.0 V |
| Design Code | B |
| Drip Cover | No Drip Cover |
| Duty Rating | CONT |
| Efficiency @ 100% Load | 85.5 % |
| Electrically Isolated Bearing | Not Electrically Isolated |
| Feedback Device | NO FEEDBACK |
| Heater Indicator | No Heater |
| High Voltage Full Load Amps | 2.5 a |

Part Detail

| | |
|---------------------|--------------|
| Revision | F |
| Type | AC |
| Mech. spec. | |
| Base | |
| Status | PRD/A |
| Elec. spec. | 35WGQ054 |
| Layout | 35LY-000-271 |
| Eff. date | 01-02-2026 |
| CD Diagram | CD0005 |
| Poles | 02 |
| Leads | 9#18 |
| Proprietary | False |
| Created date | 03-09-2020 |

| | |
|-----------------------------------|---------------------|
| Insulation Class | H |
| Inverter Code | Inverter Ready |
| IP Rating | NONE |
| KVA Code | K |
| Lifting Lugs | No Lifting Lugs |
| Locked Bearing Indicator | Locked Bearing |
| Motor Lead Termination | Flying Leads |
| Motor Standards | NEMA |
| Motor Type | 3524M |
| Mounting Arrangement | F1 |
| Number of Poles | 2 |
| Overall Length | 11.62 IN |
| Power Factor | 87 |
| Product Family | General Purpose |
| Pulley Face Code | C-Face |
| Rodent Screen | None |
| Service Factor | 1.15 |
| Shaft Diameter | 0.875 IN |
| Shaft Ground Indicator | Shaft Grounding |
| Shaft Rotation | Reversible |
| Speed | 3450 rpm |
| Speed Code | Single Speed |
| Starting Method | Direct on line |
| Thermal Device - Bearing | None |
| Thermal Device - Winding | None |
| Vibration Sensor Indicator | No Vibration Sensor |
| Winding Thermal 1 | None |
| Winding Thermal 2 | None |

Nameplate

NP3553LUA

| | | | | | | | |
|----------------------------------|------------------------|-------------|------|------------|---|--------------|-------|
| CAT.NO. | CEM3155T-G | | | | | | |
| SPEC. | 35-0000818 | | | | | | |
| HP | 2 | | | | | | |
| VOLTS | 230/460 | | | | | | |
| AMPS | 5/2.5 | | | | | | |
| RPM | 3450 | | | | | | |
| FRAME | 143TC | HZ | 60 | PH | 3 | | |
| SF | 1.15 | CODE | K | DES | B | CLASS | H |
| NEMA NOM. EFF | 85.5 | PF | 87 | | | | |
| RATING | 40C AMB-CONT | | | | | | |
| CC | 010A | | | | | | |
| ENCL | OPSB | SN | | | | | |
| DE | 6205 | ODE | 6203 | | | | |
| VPWM INVERTER READY | | | | | | | |
| CT30-60(2:1) VT3-60(20:1) | | | | | | | |
| USABLE AT | 50HZ 2HP 190/380V 6/3A | | | | | | SF1.0 |

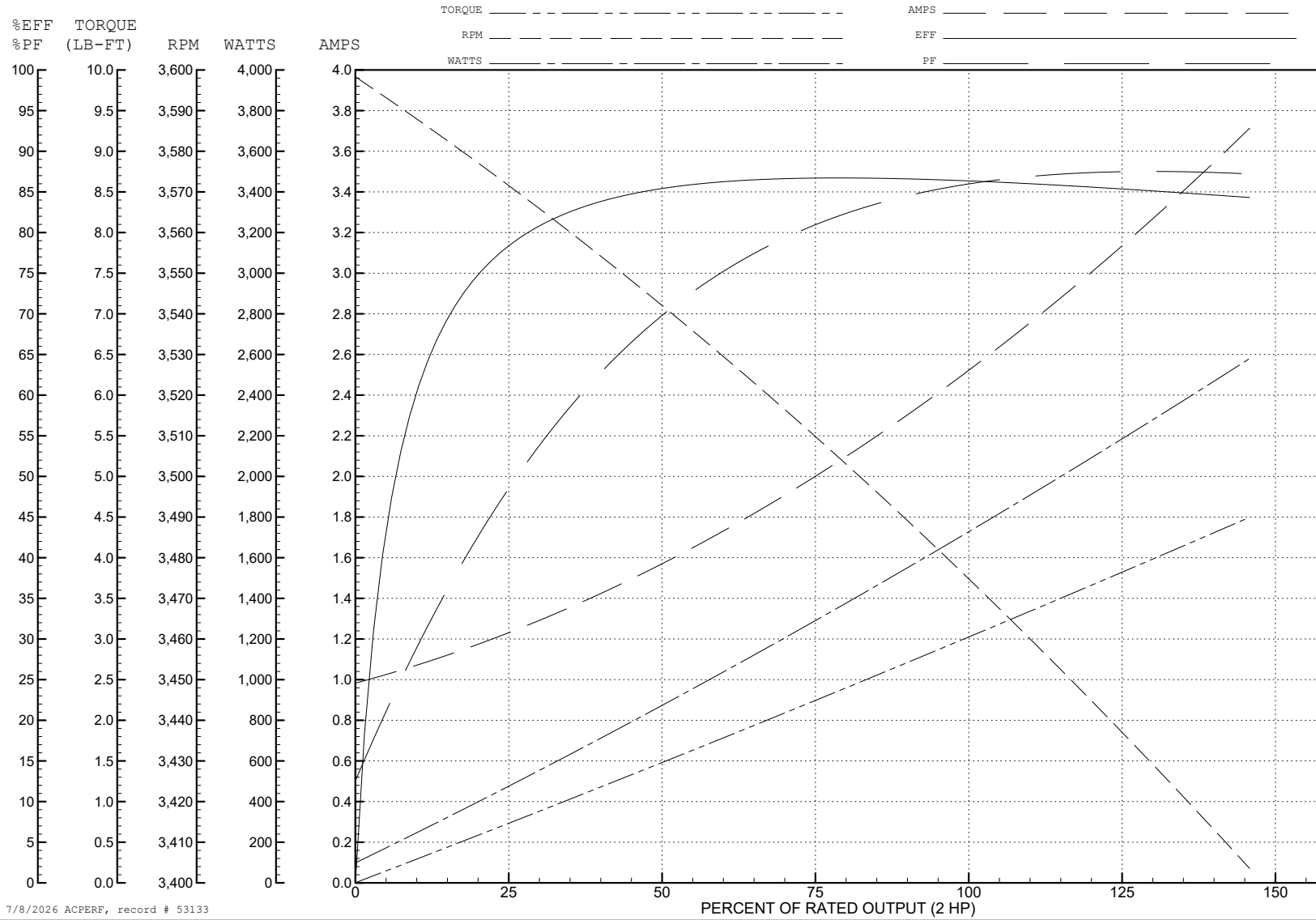
ABB Motors and Mechanical Inc.

WINDING # 35WGQ054

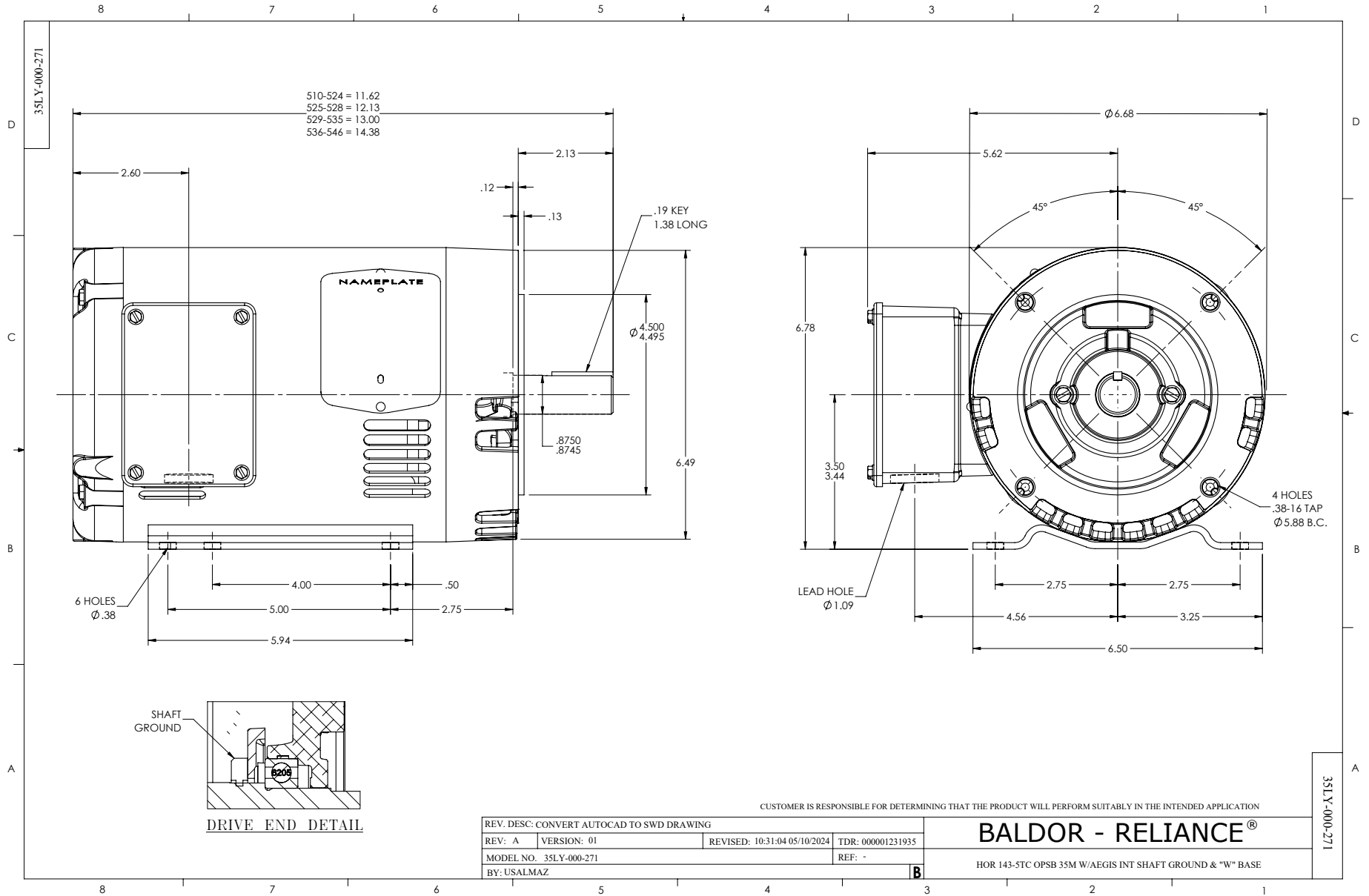
Typical performance - not guaranteed values.

2 HP 3 PH 60 HZ 3450 RPM 460 V 3524M

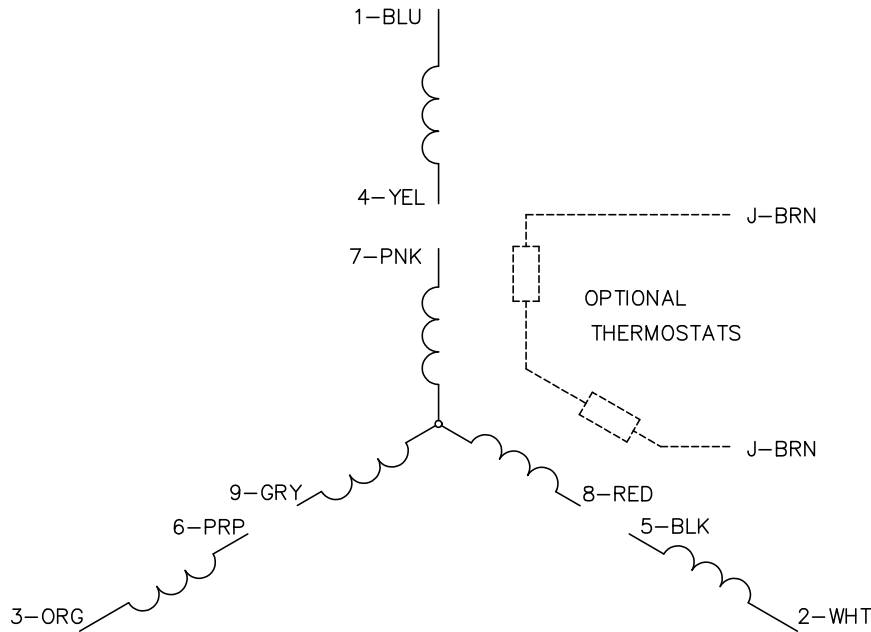
TORQUES (LB-FT): PO=11 PU=8 LR=9.6 LRA=21.5



7/8/2026 ACPERF, record # 53133



CD0005

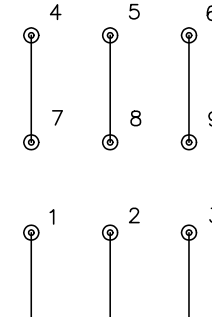


LOW VOLTAGE
(2Y)



LINE

HIGH VOLTAGE
(1Y)



LINE

NOTES:

1. INTERCHANGE ANY TWO LINE LEADS TO REVERSE ROTATION.
2. OPTIONAL THERMOSTATS ARE PROVIDED WHEN SPECIFIED.
3. ACTUAL NUMBER OF INTERNAL PARALLEL CIRCUITS MAY BE A MULTIPLE OF THOSE SHOWN ABOVE.
4. LEAD COLORS ARE OPTIONAL. LEADS MUST ALWAYS BE NUMBERED AS SHOWN.

CD0005

| | | | |
|---|---------|-------------------------|--------------|
| REV. DESC: REVISE TO SHOW OPTIONAL COLORS | | | |
| REV. LTR: E | BY: JLP | REVISED: 01/19/99 10:15 | TDR: 0171435 |
| S00000 | | FILE: AAA00005140 | MDL: - |
| | | MTL: - | |

BALDOR ELECTRIC Co.

3PH, DV, 9 LEADS