



Customer information packet

CEM31115-G

1HP, 3500RPM, 3PH, 60HZ, 56C, OPSB, F1

Class - None

Division - Not Applicable

Specifications

Enclosure	OPSB
Frame	56C
Frame Material	Steel
Frequency	60.00 Hz
Motor Letter Type	Three Phase
Output @ Frequency	1.000 HP @ 60 HZ
Phase	3
Synchronous Speed @ Frequency	3600 RPM @ 60 HZ
Voltage @ Frequency	230.0 V @ 60 HZ
	460.0 V @ 60 HZ
XP Class and Group	None
XP Division	Not Applicable
Agency Approvals	CSA
	CSA EEV
	NEMA PREMIUM
	UR
Ambient Temperature	40 °C
Auxillary Box	No Auxillary Box
Auxillary Box Lead Termination	None
Base Indicator	Rigid
Bearing Grease Type	Polyrex EM (-20F +300F)
Blower	None
Current @ Voltage	2.900 A @ 230.0 V
	1.450 A @ 460.0 V
Design Code	B
Drip Cover	No Drip Cover
Duty Rating	CONT
Efficiency @ 100% Load	78.5 %
Electrically Isolated Bearing	Not Electrically Isolated
Feedback Device	NO FEEDBACK
Heater Indicator	No Heater
High Voltage Full Load Amps	1.5 a

Part detail

Revision	A
Type	AC
Mech. spec.	
Base	
Status	PRD/A
Elec. spec.	35WGP987
Layout	35LYZ614
Eff. date	11-11-2021
CD Diagram	CD0005
Poles	02
Leads	9#18
Proprietary	False
Created date	03-09-2020

Insulation Class	H
Inverter Code	Inverter Ready
IP Rating	NONE
KVA Code	K
Lifting Lugs	No Lifting Lugs
Locked Bearing Indicator	Locked Bearing
Motor Lead Termination	Flying Leads
Motor Standards	NEMA
Motor Type	3512M
Mounting Arrangement	F1
Number of Poles	2
Overall Length	11.06 IN
Power Factor	80
Product Family	General Purpose
Pulley Face Code	C-Face
Rodent Screen	None
Service Factor	1.15
Shaft Diameter	0.625 IN
Shaft Ground Indicator	Shaft Grounding
Shaft Rotation	Reversible
Speed	3500 rpm
Speed Code	Single Speed
Starting Method	Direct on line
Thermal Device - Bearing	None
Thermal Device - Winding	None
Vibration Sensor Indicator	No Vibration Sensor
Winding Thermal 1	None
Winding Thermal 2	None

Nameplate

NP3553LUA

CAT.NO.	CEM31115-G						
SPEC.	35-0000-0669						
HP	1						
VOLTS	230/460						
AMPS	2.9/1.45						
RPM	3500						
FRAME	56C	HZ	60	PH	3		
SF	1.15	CODE	K	DES	B	CLASS	H
NEMA NOM. EFF	78.5	PF	80				
RATING	40C AMB-CONT						
CC	010A	USABLE AT 208V			N/A		
DE	6205	ODE	6203				
ENCL	OPSB	SN					
VPWM INVERTER READY							
CT30-60(2:1) VT3-60(20:1)							
USABLE AT	50HZ 1HP 190/380V 3.4/1.9A						SF1.0

AC Induction Motor Performance Data

Record # 81806

Typical performance - not guaranteed values

Winding: 35WGP987-R008		Type: 3512M	Enclosure: OPEN		
Nameplate Data			460 V, 60 Hz: High Voltage Connection		
Rated Output (HP)	1	Full Load Torque	1.47 LB-FT		
Volts	230/460	Start Configuration	direct on line		
Full Load Amps	2.9/1.45	Breakdown Torque	6.11 LB-FT		
R.P.M.	3500	Pull-up Torque	2.3 LB-FT		
Hz	60 Phase	3	Locked-rotor Torque	3.86 LB-FT	
NEMA Design Code	B	KVA Code	K	Starting Current	10.8 A
Service Factor (S.F.)	1.15	No-load Current	0.883 A		
NEMA Nom. Eff.	78.5	Power Factor	80	Line-line Res. @ 25°C	19.3 Ω
Rating - Duty	40C	AMB-CONT	Temp. Rise @ Rated Load		31°C
S.F. Amps			Temp. Rise @ S.F. Load		35°C
			Locked-rotor Power Factor	66	
			Rotor inertia	0.0332 LB-FT ²	

Load Characteristics 460 V, 60 Hz, 1 HP

% of Rated Load	25	50	75	100	125	150	S.F.
Power Factor	39	58	72	80	85	88	83
Efficiency	62.2	74.4	78.5	79.2	79.4	78.1	79.3
Speed	3575	3552	3527	3499	3464	3429	3478
Line amperes	0.931	1.04	1.22	1.44	1.72	2.03	1.61

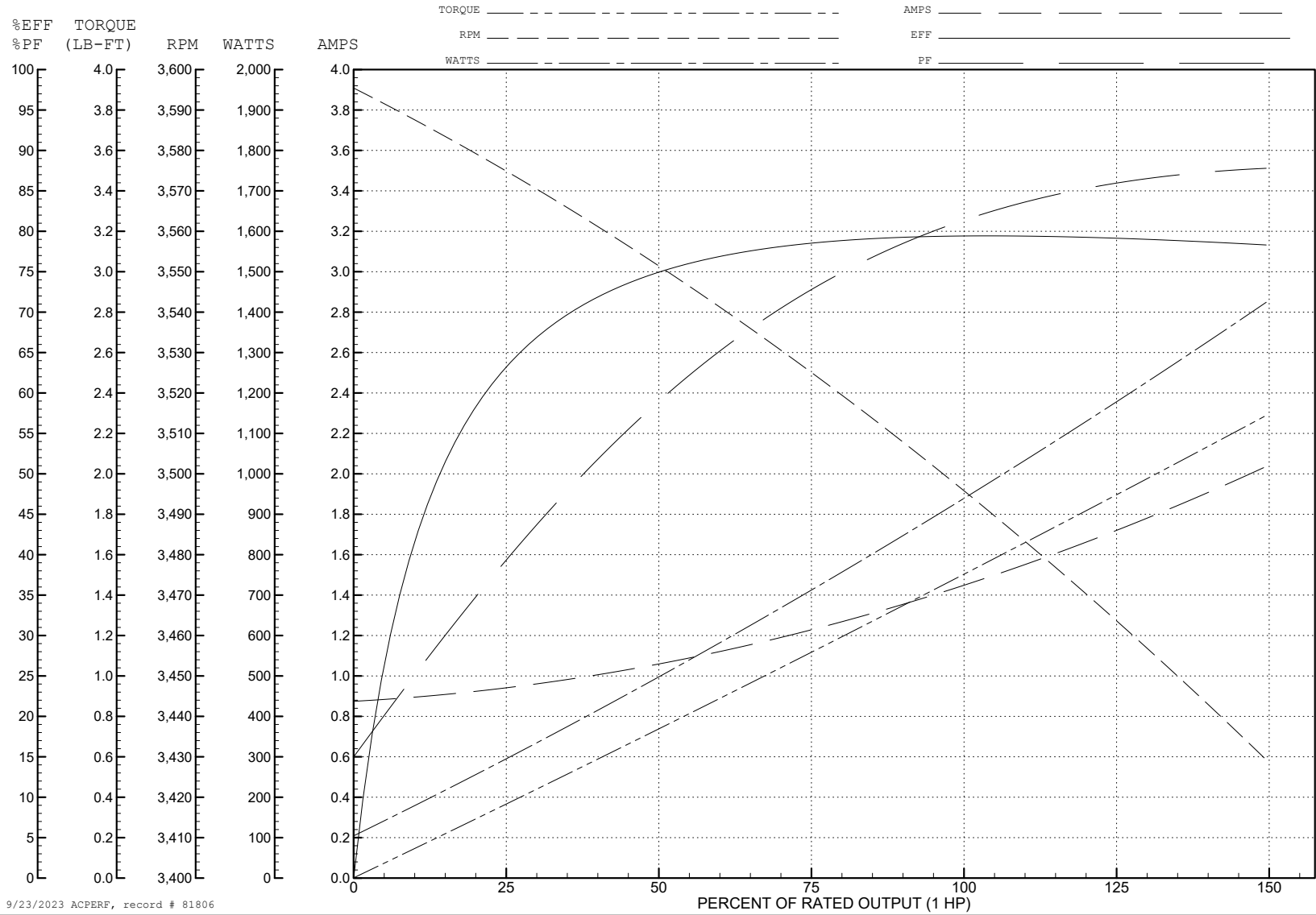
ABB Motors and Mechanical Inc.

WINDING # 35WGP987

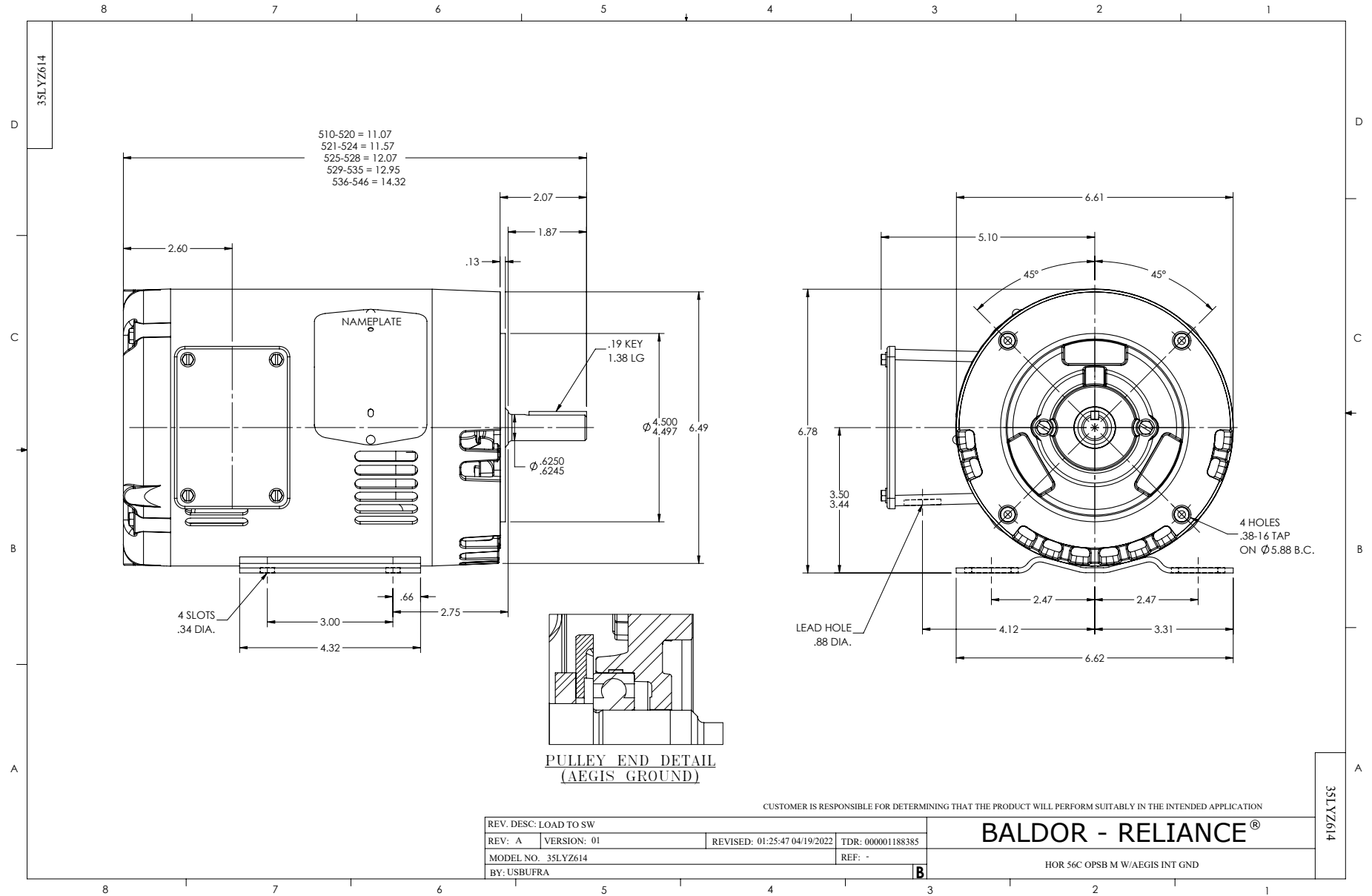
Typical performance - not guaranteed values.

1 HP 3 PH 60 HZ 3500 RPM 460 V 3512M

TORQUES (LB-FT): PO=6.11 PU=2.3 LR=3.86 LRA=10.8



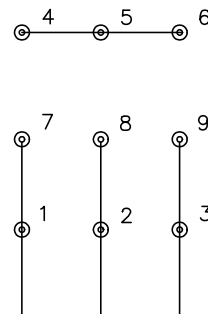
9/23/2023 ACPERF, record # 81806



CD0005



LOW VOLTAGE
(2Y)



LINE

HIGH VOLTAGE
(1Y)



LINE

NOTES:

1. INTERCHANGE ANY TWO LINE LEADS TO REVERSE ROTATION.
2. OPTIONAL THERMOSTATS ARE PROVIDED WHEN SPECIFIED.
3. ACTUAL NUMBER OF INTERNAL PARALLEL CIRCUITS MAY BE A MULTIPLE OF THOSE SHOWN ABOVE.
4. LEAD COLORS ARE OPTIONAL. LEADS MUST ALWAYS BE NUMBERED AS SHOWN.

CD0005

REV. DESC: REVISE TO SHOW OPTIONAL COLORS			
REV. LTR: E	BY: JLP	REVISED: 01/19/99 10:15	TDR: 0171435
S00000		FILE: AAA00005140	MDL: -
		MTL: -	

BALDOR ELECTRIC Co.

3PH, DV, 9 LEADS