

ABB BALDOR RELIANCE III

Customer information packet

CEM31107

.5HP, 3450RPM, 3PH, 60HZ, 56C, 3416M, OPEN, F1

Class - None

Division - Not Applicable

Specifications

| | |
|---------------------------------------|--|
| Enclosure | OPEN |
| Frame | 56C |
| Frame Material | Steel |
| Frequency | 60.00 Hz |
| Haz Area Class and Group | None |
| Haz Area Division | Not Applicable |
| Motor Letter Type | Three Phase |
| Output @ Frequency | .500 HP @ 60 HZ |
| Phase | 3 |
| Synchronous Speed @ Frequency | 3600 RPM @ 60 HZ |
| Voltage @ Frequency | 230.0 V @ 60 HZ 460.0 V @ 60 HZ |
| Agency Approvals | CURUSEEV |
| Ambient Temperature | 40 °C |
| Auxiliary Box | NO AUXILLARY BOX |
| Auxiliary Box Lead Termination | None |
| Base Indicator | Rigid |
| Bearing Grease Type | Polyrex EM (-20F +300F) |
| Blower | None |
| Current @ Voltage | .800 A @ 460.0 V 1.600 A @ 230.0 V 1.900 A @ 208.0 V |
| Design Code | B |
| Drip Cover | No Drip Cover |
| Duty Rating | CONT |
| Efficiency @ 100% Load | 73.4 % |
| Electrically Isolated Bearing | Not Electrically Isolated |
| Feedback Device | NO FEEDBACK |
| Front Face Code | Standard |
| Front Shaft Indicator | None |
| Heater Indicator | No Heater |
| High Voltage Full Load Amps | 0.8 a |

Part Detail

| | |
|---------------------|------------|
| Revision | K |
| Type | AC |
| Mech. spec. | 34F010 |
| Base | |
| Status | PRD/A |
| Elec. spec. | 34WGS937 |
| Layout | 34LYF010 |
| Eff. date | 02-12-2025 |
| CD Diagram | CD0005 |
| Poles | 02 |
| Leads | 9#18 |
| Proprietary | False |
| Created date | 09-30-2014 |

| | |
|--------------------------------------|---------------------|
| Insulation Class | B |
| Inverter Code | Not Inverter |
| KVA Code | P |
| Lifting Lugs | No Lifting Lugs |
| Locked Bearing Indicator | Locked Bearing |
| Motor Lead Exit | Ko Box |
| Motor Lead Quantity/Wire Size | 9 @ 18 AWG |
| Motor Lead Termination | Flying Leads |
| Motor Standards | NEMA |
| Motor Type | 3416M |
| Mounting Arrangement | F1 |
| Number of Poles | 2 |
| Overall Length | 10.10 IN |
| Power Factor | 78 |
| Product Family | General Purpose |
| Pulley End Bearing Type | Ball |
| Pulley Face Code | C-Face |
| Pulley Shaft Indicator | Standard |
| Rodent Screen | None |
| RoHS Status | ROHS COMPLIANT |
| Service Factor | 1.25 |
| Shaft Diameter | 0.625 IN |
| Shaft Extension Location | Pulley End |
| Shaft Ground Indicator | No Shaft Grounding |
| Shaft Rotation | Reversible |
| Shaft Slinger Indicator | No Slinger |
| Speed | 3450 rpm |
| Speed Code | Single Speed |
| Starting Method | Direct on line |
| Thermal Device - Bearing | None |
| Thermal Device - Winding | None |
| Vibration Sensor Indicator | No Vibration Sensor |
| Winding Thermal 1 | None |
| Winding Thermal 2 | None |

Nameplate

| NP3155L | | | | | | | | | |
|-----------------------|--------------|-------------|------|------------|---|-----------|---|--|--|
| CAT.NO. | CEM31107 | | | | | | | | |
| SPEC. | 34F010S937G1 | | | | | | | | |
| HP | .5 | | | | | | | | |
| VOLTS | 230/460 | | | | | | | | |
| AMP | 1.6/.8 | | | | | | | | |
| RPM | 3450 | | | | | | | | |
| FRAME | 56C | HZ | 60 | PH | 3 | | | | |
| SER.F. | 1.25 | CODE | P | DES | B | CL | B | | |
| F.L. AVG. EFF. | 73.4 | PF | 78 | | | | | | |
| RATING | 40C AMB-CONT | | | | | | | | |
| CC | | | | | | | | | |
| DE | 6203 | ODE | 6203 | | | | | | |
| ENCL | OPEN | SN | | | | | | | |
| | SFA 1.8/.9 | | | | | | | | |

ABB Motors and Mechanical Inc.

WINDING # 34WGS937

Typical performance - not guaranteed values.

0.5 HP 3 PH 60 HZ 3450 RPM 460 V 3416M

TORQUES (LB-FT): PO=4.81 PU=3.29 LR=4.44 LRA=7.88

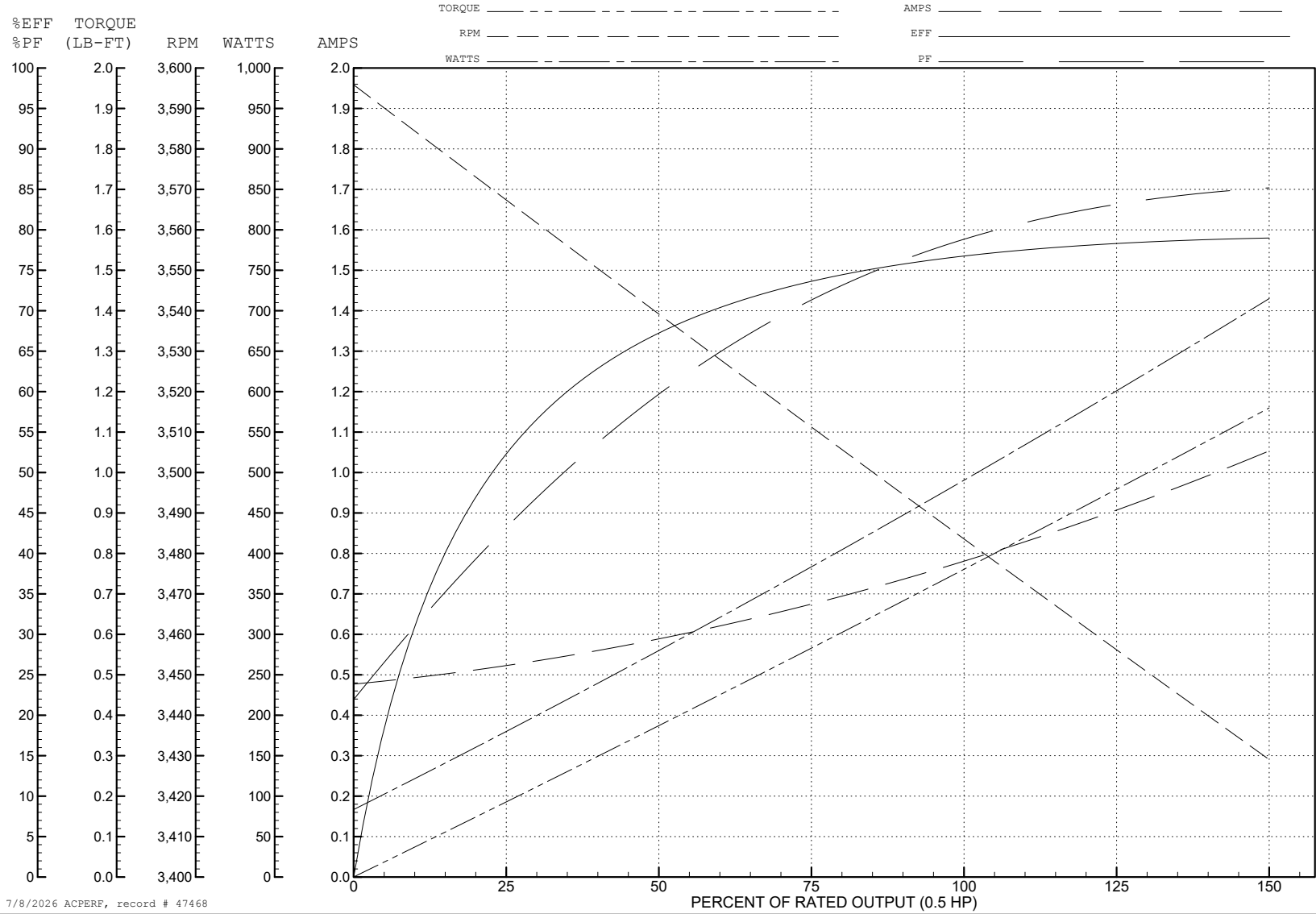


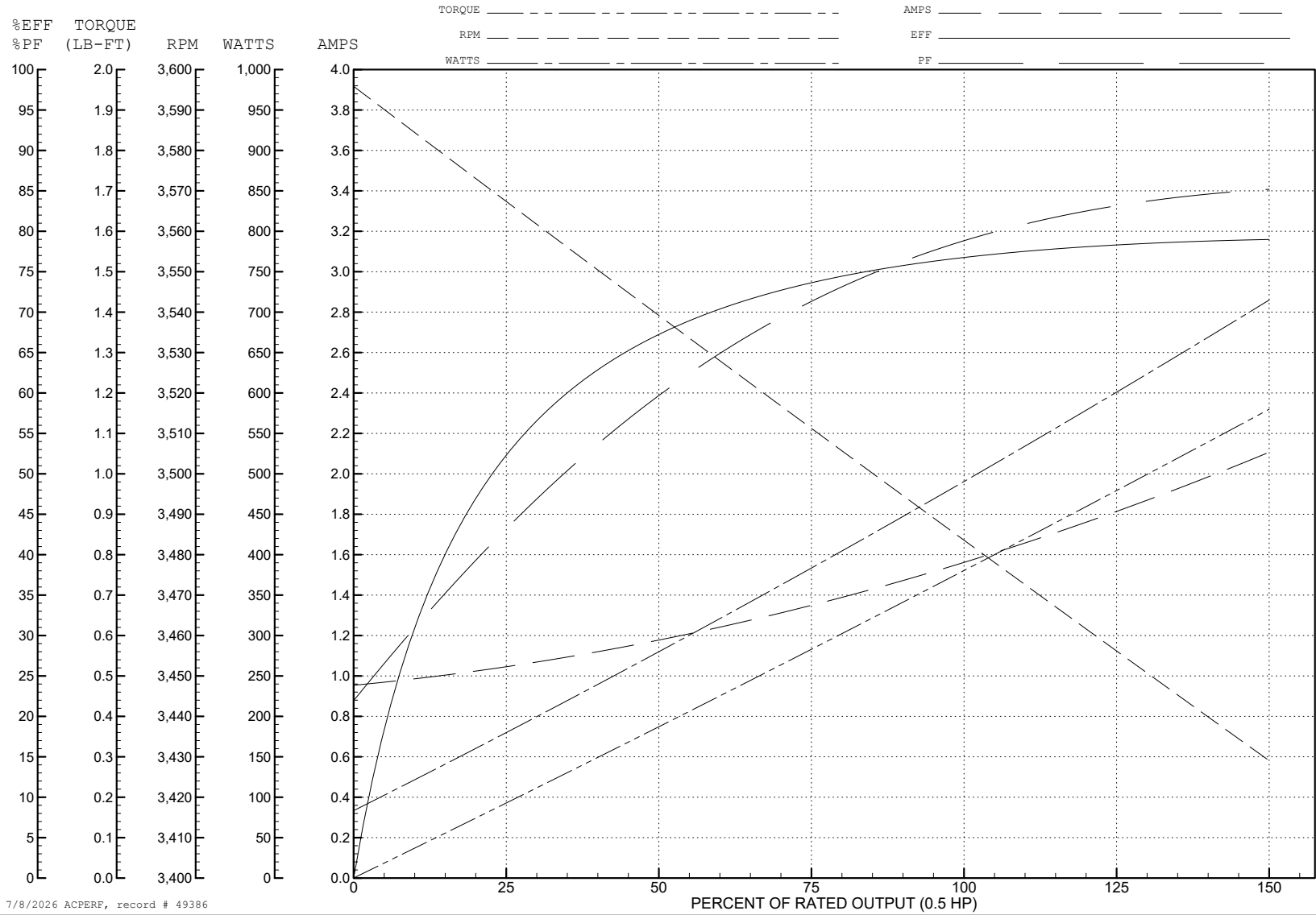
ABB Motors and Mechanical Inc.

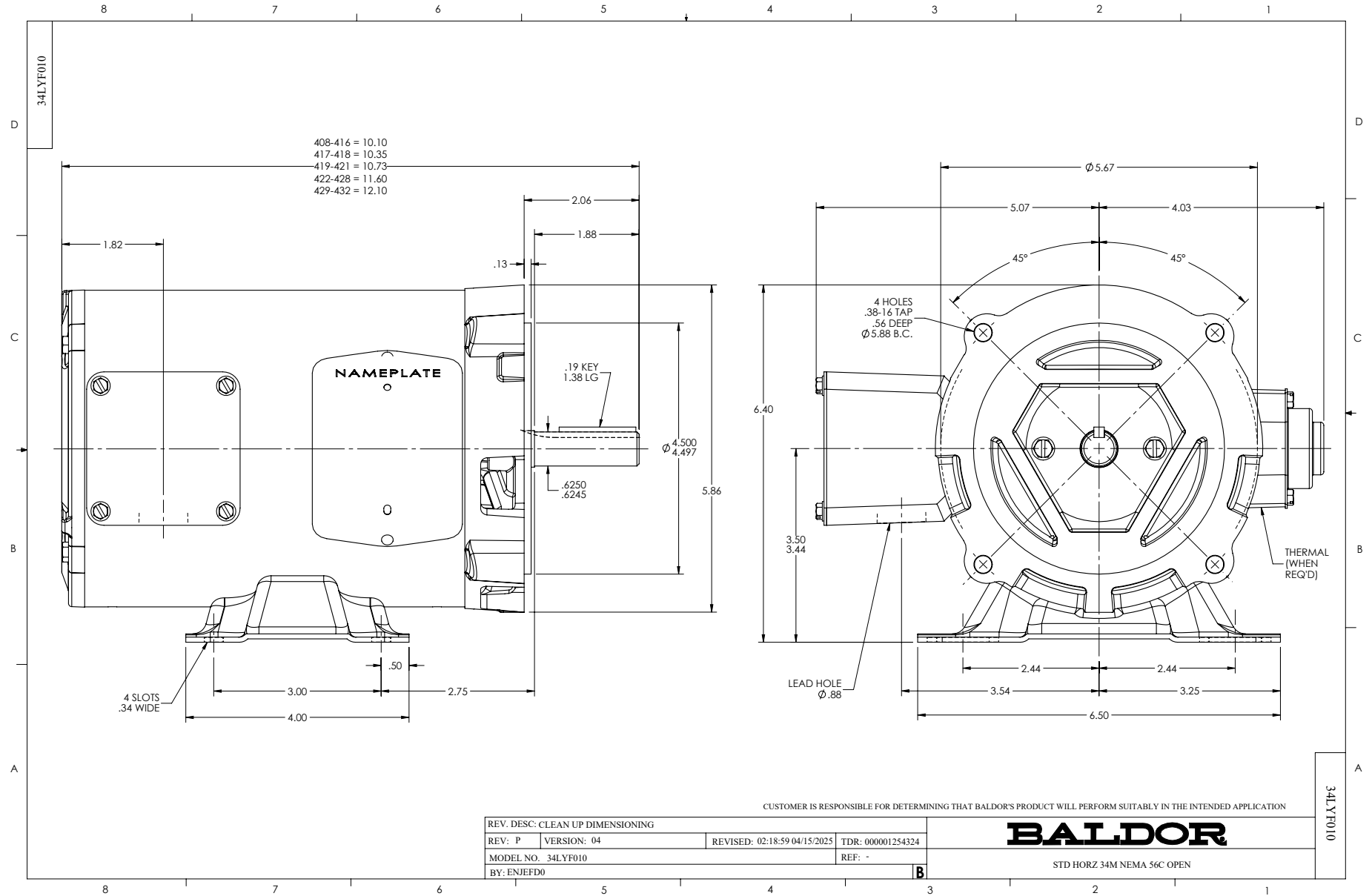
WINDING # 34WGS937

Typical performance - not guaranteed values.

0.5 HP 3 PH 60 HZ 3450 RPM 230 V 3416M

TORQUES (LB-FT): PO=4.81 PU=3.29 LR=4.44 LRA=15.76





CD0005



LOW VOLTAGE
(2Y)



HIGH VOLTAGE
(1Y)



NOTES:

1. INTERCHANGE ANY TWO LINE LEADS TO REVERSE ROTATION.
2. OPTIONAL THERMOSTATS ARE PROVIDED WHEN SPECIFIED.
3. ACTUAL NUMBER OF INTERNAL PARALLEL CIRCUITS MAY BE A MULTIPLE OF THOSE SHOWN ABOVE.
4. LEAD COLORS ARE OPTIONAL. LEADS MUST ALWAYS BE NUMBERED AS SHOWN.

CD0005

REV. DESC: REVISE TO SHOW OPTIONAL COLORS

REV. LTR: E BY: JLP REVISED: 01/19/99 10:15 TDR: 0171435

500000

FILE: AAA00005140

MDL: -

MTL: -

BALDOR ELECTRIC Co.

3PH, DV, 9 LEADS