

BALDOR® • RELIANCE™

Customer information packet

CEM2536T

30HP, 1180RPM, 3PH, 60HZ, 326TC, OPSB, F1

Specifications

| | |
|--------------------------------|--|
| Enclosure | OPSB |
| Frame | 326TC |
| Frame Material | Steel |
| Frequency | 60.00 Hz |
| Motor Letter Type | Three Phase |
| Output @ Frequency | 30.000 HP @ 60 HZ |
| Phase | 3 |
| Synchronous Speed @ Frequency | 1200 RPM @ 60 HZ |
| Voltage @ Frequency | 460.0 V @ 60 HZ 230.0 V @ 60 HZ |
| Agency Approvals | CSA EEV NEMA PREMIUM NEMA_PREMIUM UR |
| Ambient Temperature | 40 °C |
| Auxillary Box | No Auxillary Box |
| Auxillary Box Lead Termination | None |
| Base Indicator | Rigid |
| Bearing Grease Type | Polyrex EM (-20F +300F) |
| Blower | None |
| Current @ Voltage | 82.000 A @ 208.0 V 78.000 A @ 230.0 V 39.000 A @ 460.0 V |
| Design Code | A |
| Drip Cover | No Drip Cover |
| Duty Rating | CONT |
| Efficiency @ 100% Load | 93.6 % |
| Electrically Isolated Bearing | Not Electrically Isolated |
| Feedback Device | NO FEEDBACK |
| Heater Indicator | No Heater |
| High Voltage Full Load Amps | 39.0 a |
| Insulation Class | F |

Part detail

| | |
|--------------|------------|
| Revision | B |
| Type | AC |
| Mech. spec. | |
| Base | |
| Status | PRD/A |
| Elec. spec. | 40WGX122 |
| Layout | 40LYH006 |
| Eff. date | 02-12-2024 |
| CD Diagram | CD0005 |
| Poles | 06 |
| Leads | 9#8 |
| Proprietary | False |
| Created date | 02-20-2020 |

| | |
|-----------------------------------|-----------------------|
| Inverter Code | Inverter Ready |
| IP Rating | NONE |
| KVA Code | H |
| Lifting Lugs | Standard Lifting Lugs |
| Locked Bearing Indicator | Locked Bearing |
| Motor Lead Termination | Flying Leads |
| Motor Standards | NEMA |
| Motor Type | 4084M |
| Mounting Arrangement | F1 |
| Number of Poles | 6 |
| Overall Length | 28.69 IN |
| Power Factor | 77 |
| Product Family | General Purpose |
| Pulley Face Code | C-Face |
| Rodent Screen | None |
| Service Factor | 1.15 |
| Shaft Diameter | 2.125 IN |
| Shaft Ground Indicator | No Shaft Grounding |
| Shaft Rotation | Reversible |
| Speed | 1180 rpm |
| Speed Code | Single Speed |
| Starting Method | Direct on line |
| Thermal Device - Bearing | None |
| Thermal Device - Winding | None |
| Vibration Sensor Indicator | No Vibration Sensor |
| Winding Thermal 1 | None |
| Winding Thermal 2 | None |

Nameplate

NP2138L

| | | | | | | | | | |
|---------------------|--------------|-----------------|------------|------------------|-------|----------------|------|---------------|------|
| CAT.NO. | CEM2536T | P/N | | ENCLOSURE | OPSB | | | | |
| SPEC. | 40-0000-0134 | CC | 010A | FRAME | 326TC | S/N | | | |
| HP | 30 | CLASS | F | HZ | 60 | | | | |
| RPM | 1180 | PH | 3 | DES | A | | | | |
| VOLT | 230/460 | | | KVA-CODE | H | ODE BRG | 6309 | DE BRG | 6312 |
| AMP | 78/39 | | | | | | | | |
| RATING | 40C AMB-CONT | GREASE | POLYREX EM | | | | | | |
| NEMA-NOM-EFF | 93.6 | PF | 77 | SER.F. | 1.15 | | | | |
| HTR-VOLTS | | HTR-AMPS | | | | | | | |

AC Induction Motor Performance Data

Record # 66226

Typical performance - not guaranteed values

| Winding: 40WGX122-R001 | | Type: 4084M | | Enclosure: OPSB | |
|-------------------------------|--------------------------|----------------------------------|--|------------------------|--|
| Nameplate Data | | | 460 V, 60 Hz: High Voltage Connection | | |
| Rated Output (HP) | 30 | Full Load Torque | 133.3 LB-FT | | |
| Volts | 230/460 | Start Configuration | direct on line | | |
| Full Load Amps | 78/39 | Breakdown Torque | 417 LB-FT | | |
| R.P.M. | 1180 | Pull-up Torque | 187 LB-FT | | |
| Hz | 60 Phase | 3 | Locked-rotor Torque | 233 LB-FT | |
| NEMA Design Code | A KVA Code | H | Starting Current | 267 A | |
| Service Factor (S.F.) | 1.15 | No-load Current | 18.1 A | | |
| NEMA Nom. Eff. | 93.6 Power Factor | 77 | Line-line Res. @ 25°C | 0.2452 Ω | |
| Rating - Duty | 40C AMB-CONT | Temp. Rise @ Rated Load | 40°C | | |
| S.F. Amps | | Temp. Rise @ S.F. Load | 49°C | | |
| | | Locked-rotor Power Factor | 28.6 | | |

Load Characteristics 460 V, 60 Hz, 30 HP

| % of Rated Load | 25 | 50 | 75 | 100 | 125 | 150 | S.F. |
|------------------------|-----------|-----------|-----------|------------|------------|------------|-------------|
| Power Factor | 39 | 60 | 72 | 77 | 80 | 81 | 79 |
| Efficiency | 89.6 | 93.2 | 93.8 | 93.6 | 92.9 | 92.1 | 93.2 |
| Speed | 1196.1 | 1192.3 | 1188.4 | 1184.2 | 1179.4 | 1174.2 | 1181 |
| Line amperes | 20.2 | 25 | 31.5 | 39 | 47.4 | 56.7 | 44 |

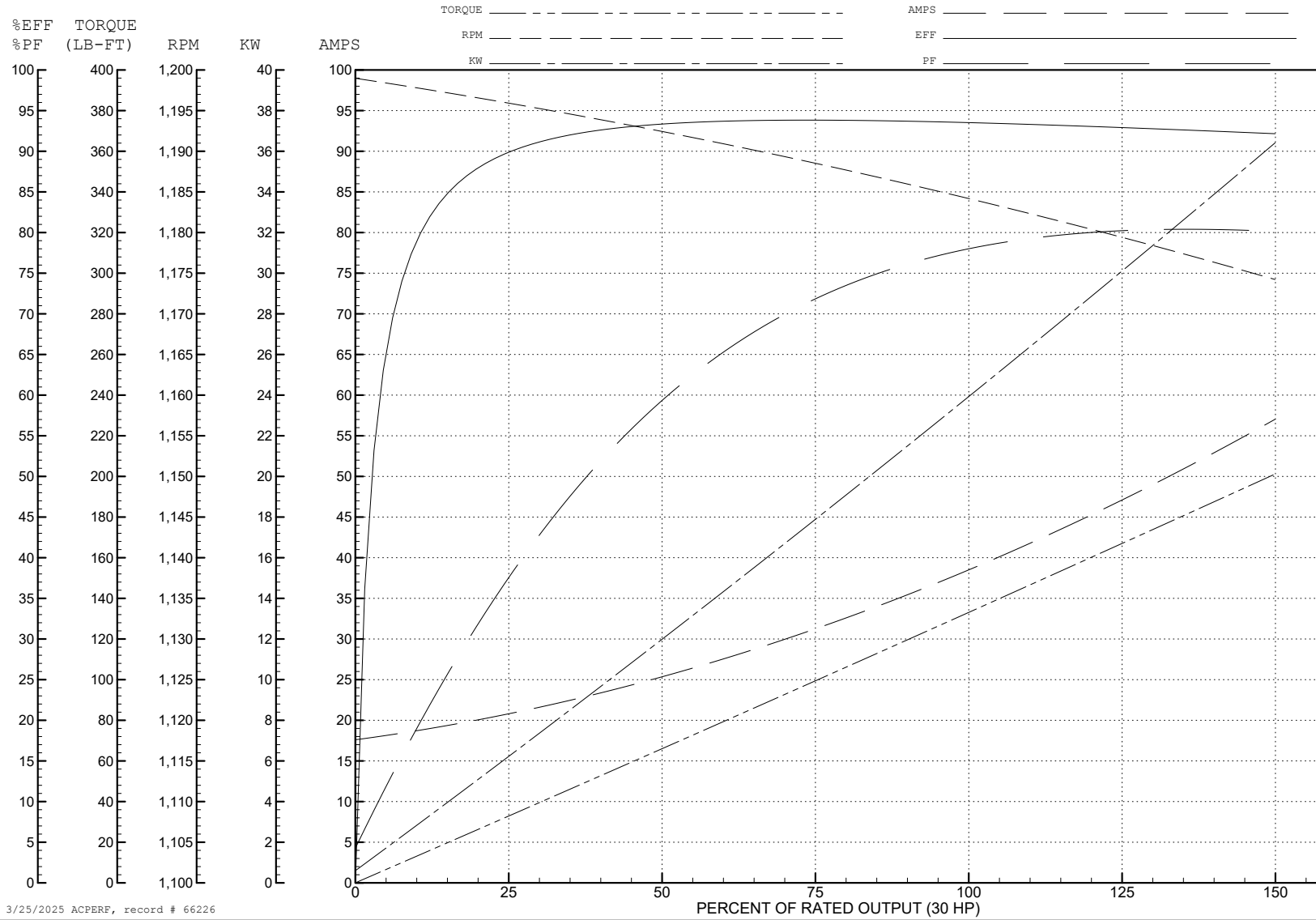
ABB Motors and Mechanical Inc.

WINDING # 40WG122

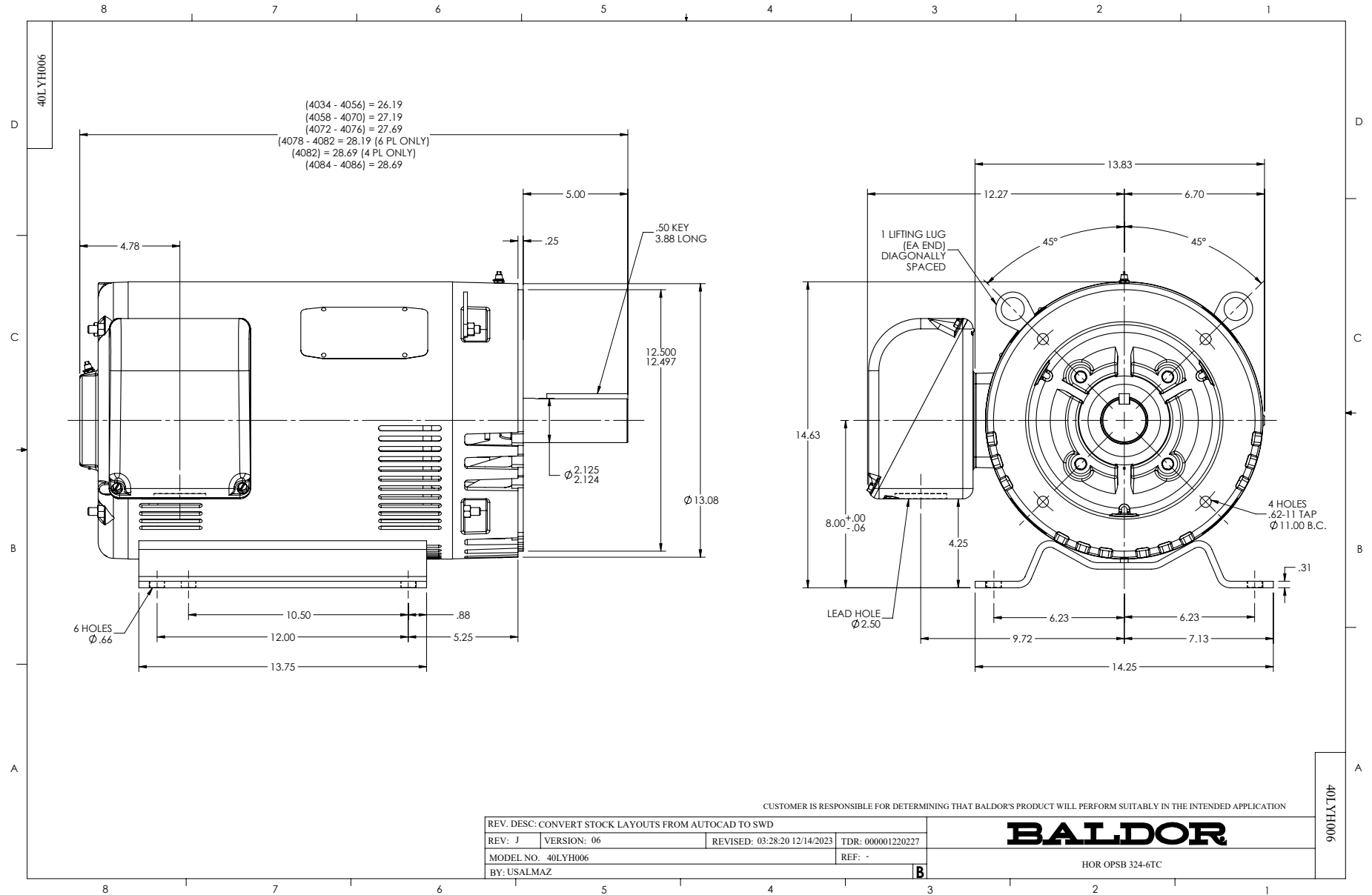
Typical performance - not guaranteed values.

30 HP 3 PH 60 HZ 1180 RPM 460 V 4084M

TORQUES (LB-FT): PO=417 PU=187 LR=233 LRA=267



3/25/2025 ACPERF, record # 66226



CD0005



LOW VOLTAGE
(2Y)



LINE

HIGH VOLTAGE
(1Y)



LINE

NOTES:

1. INTERCHANGE ANY TWO LINE LEADS TO REVERSE ROTATION.
2. OPTIONAL THERMOSTATS ARE PROVIDED WHEN SPECIFIED.
3. ACTUAL NUMBER OF INTERNAL PARALLEL CIRCUITS MAY BE A MULTIPLE OF THOSE SHOWN ABOVE.
4. LEAD COLORS ARE OPTIONAL. LEADS MUST ALWAYS BE NUMBERED AS SHOWN.

CD0005

| | | | |
|---|---------|-------------------------|--------------|
| REV. DESC: REVISE TO SHOW OPTIONAL COLORS | | | |
| REV. LTR: E | BY: JLP | REVISED: 01/19/99 10:15 | TDR: 0171435 |
| S00000 | | FILE: AAA00005140 | MDL: - |
| | | MTL: - | |

BALDOR ELECTRIC Co.

3PH, DV, 9 LEADS