

**BALDOR • RELIANCE**

---

# Customer information packet

## CEM2536T-G

30HP, 1180RPM, 3PH, 60HZ, 326TC, OPSB, F1

## Specifications

Enclosure	OPSB
Frame	326TC
Frame Material	Steel
Frequency	60.00 Hz
Motor Letter Type	Three Phase
Output @ Frequency	30.000 HP @ 60 HZ
Phase	3
Synchronous Speed @ Frequency	1200 RPM @ 60 HZ
Voltage @ Frequency	230.0 V @ 60 HZ 460.0 V @ 60 HZ
Agency Approvals	CSA CSA EEV NEMA PREMIUM UR
Ambient Temperature	40 °C
Auxillary Box	No Auxillary Box
Auxillary Box Lead Termination	None
Base Indicator	Rigid
Bearing Grease Type	Polyrex EM (-20F +300F)
Blower	None
Current @ Voltage	39.000 A @ 460.0 V 78.000 A @ 230.0 V
Design Code	A
Drip Cover	No Drip Cover
Duty Rating	CONT
Efficiency @ 100% Load	93.6 %
Electrically Isolated Bearing	Not Electrically Isolated
Feedback Device	NO FEEDBACK
Heater Indicator	No Heater
High Voltage Full Load Amps	39.0 a
Insulation Class	H
Inverter Code	Inverter Ready

## Part detail

Revision	D
Type	AC
Mech. spec.	
Base	
Status	PRD/A
Elec. spec.	40WGX122
Layout	40LY-000-045
Eff. date	06-27-2024
CD Diagram	CD0005
Poles	06
Leads	9#10
Proprietary	False
Created date	09-17-2020

IP Rating	NONE
KVA Code	H
Lifting Lugs	Standard Lifting Lugs
Locked Bearing Indicator	Locked Bearing
Motor Lead Termination	Flying Leads
Motor Standards	NEMA
Motor Type	4084M
Mounting Arrangement	F1
Number of Poles	6
Overall Length	28.69 IN
Power Factor	77
Product Family	General Purpose
Pulley Face Code	C-Face
Rodent Screen	None
Service Factor	1.15
Shaft Diameter	2.125 IN
Shaft Ground Indicator	Shaft Grounding
Shaft Rotation	Reversible
Speed	1180 rpm
Speed Code	Single Speed
Starting Method	Direct on line
Thermal Device - Bearing	None
Thermal Device - Winding	None
Vibration Sensor Indicator	No Vibration Sensor
Winding Thermal 1	None
Winding Thermal 2	None

**Nameplate**

NP3554LUA										
<b>CAT.NO.</b>	CEM2536T-G			<b>P/N</b>				<b>ENCL</b>		<b>OPSB</b>
<b>SPEC.</b>	40-0000-0172	<b>CC</b>	010A	<b>FRAME</b>		326TC	<b>SER.NO.</b>			
<b>HP</b>	30	<b>CLASS</b>		H	<b>HZ</b>	60				
<b>RPM</b>	1180	<b>PH</b>	3	<b>DES</b>		A				
<b>VOLTS</b>	230/460			<b>CODE</b>		H	<b>ODE BRG</b>	6309	<b>DE BRG</b>	6312
<b>AMPS</b>	78/39									
<b>RATING</b>	40C AMB-CONT			<b>NEMA-NOM-EFF</b>		93.6	<b>GREASE</b>	POLYREX EM		
<b>PF</b>	77	<b>SER.F.</b>	1.15	<b>CT30-60(2:1) VT3-60(20:1)</b>						
<b>USABLE AT</b>	50HZ 30HP 190/380V 88/44A			SF1.0						
<b>HTR-VOLTS</b>	<b>HTR-AMPS</b>	<b>MAX. SPACE HEATER TEMP.</b>								

**AC Induction Motor Performance Data**

Record # 66227

Typical performance - not guaranteed values

Winding: 40WGX122-R002		Type: 4084M	Enclosure: OPSB	
<b>Nameplate Data</b>			<b>460 V, 60 Hz: High Voltage Connection</b>	
Rated Output (HP)	30	Full Load Torque	133.3 LB-FT	
Volts	230/460	Start Configuration	direct on line	
Full Load Amps	78/39	Breakdown Torque	417 LB-FT	
R.P.M.	1180	Pull-up Torque	187 LB-FT	
Hz	60 Phase	Locked-rotor Torque	233 LB-FT	
NEMA Design Code	A KVA Code	Starting Current	267 A	
Service Factor (S.F.)	1.15	No-load Current	18.1 A	
NEMA Nom. Eff.	93.6 Power Factor	Line-line Res. @ 25°C	0.2452 Ω	
Rating - Duty	40C AMB-CONT	Temp. Rise @ Rated Load	40°C	
S.F. Amps		Temp. Rise @ S.F. Load	49°C	
		Locked-rotor Power Factor	28.6	

**Load Characteristics 460 V, 60 Hz, 30 HP**

% of Rated Load	25	50	75	100	125	150	S.F.
Power Factor	39	60	72	77	80	81	79
Efficiency	89.6	93.2	93.8	93.6	92.9	92.1	93.2
Speed	1196.1	1192.3	1188.4	1184.2	1179.4	1174.2	1181
Line amperes	20.2	25	31.5	39	47.4	56.7	44

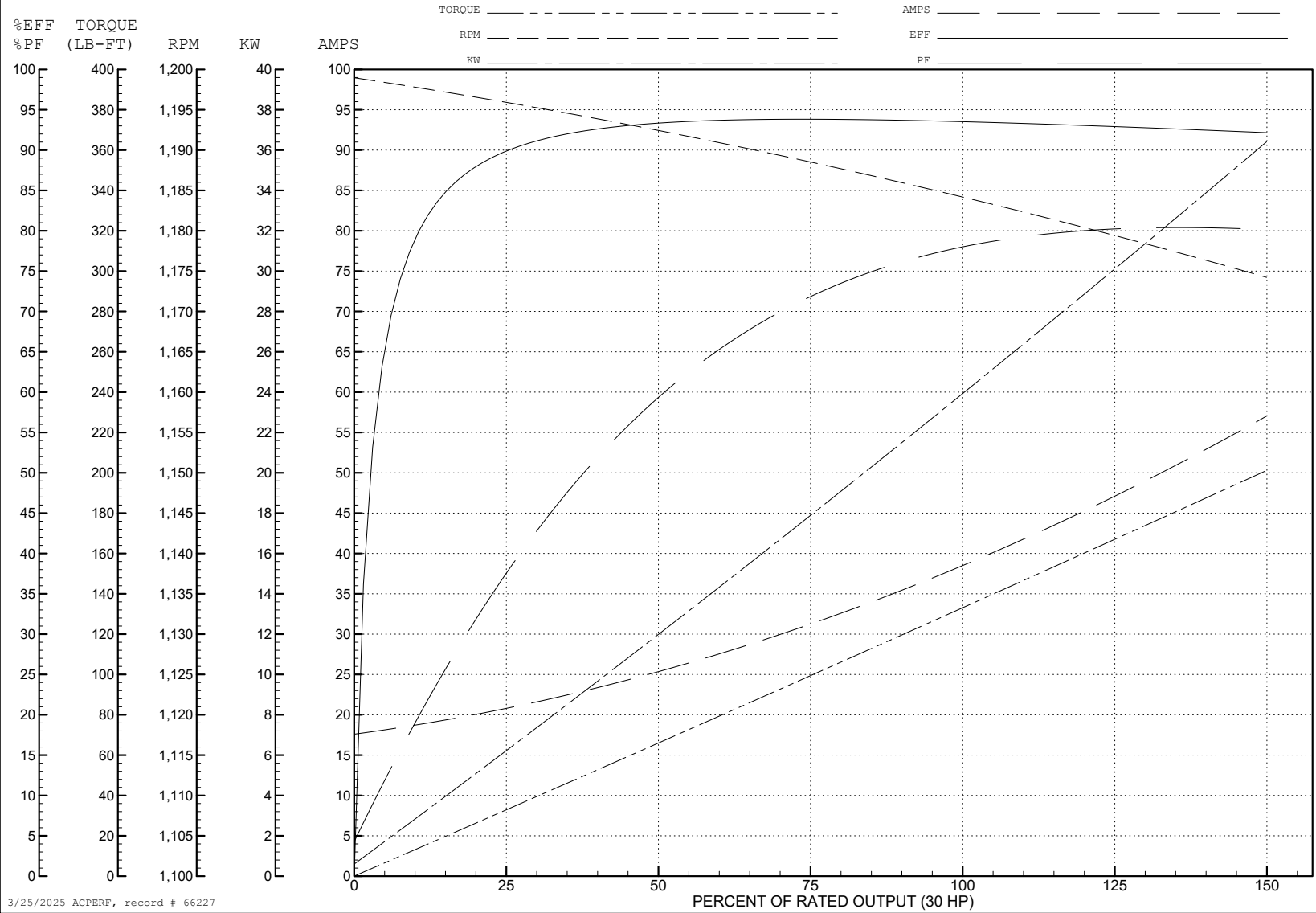
ABB Motors and Mechanical Inc.

WINDING # 40WG122

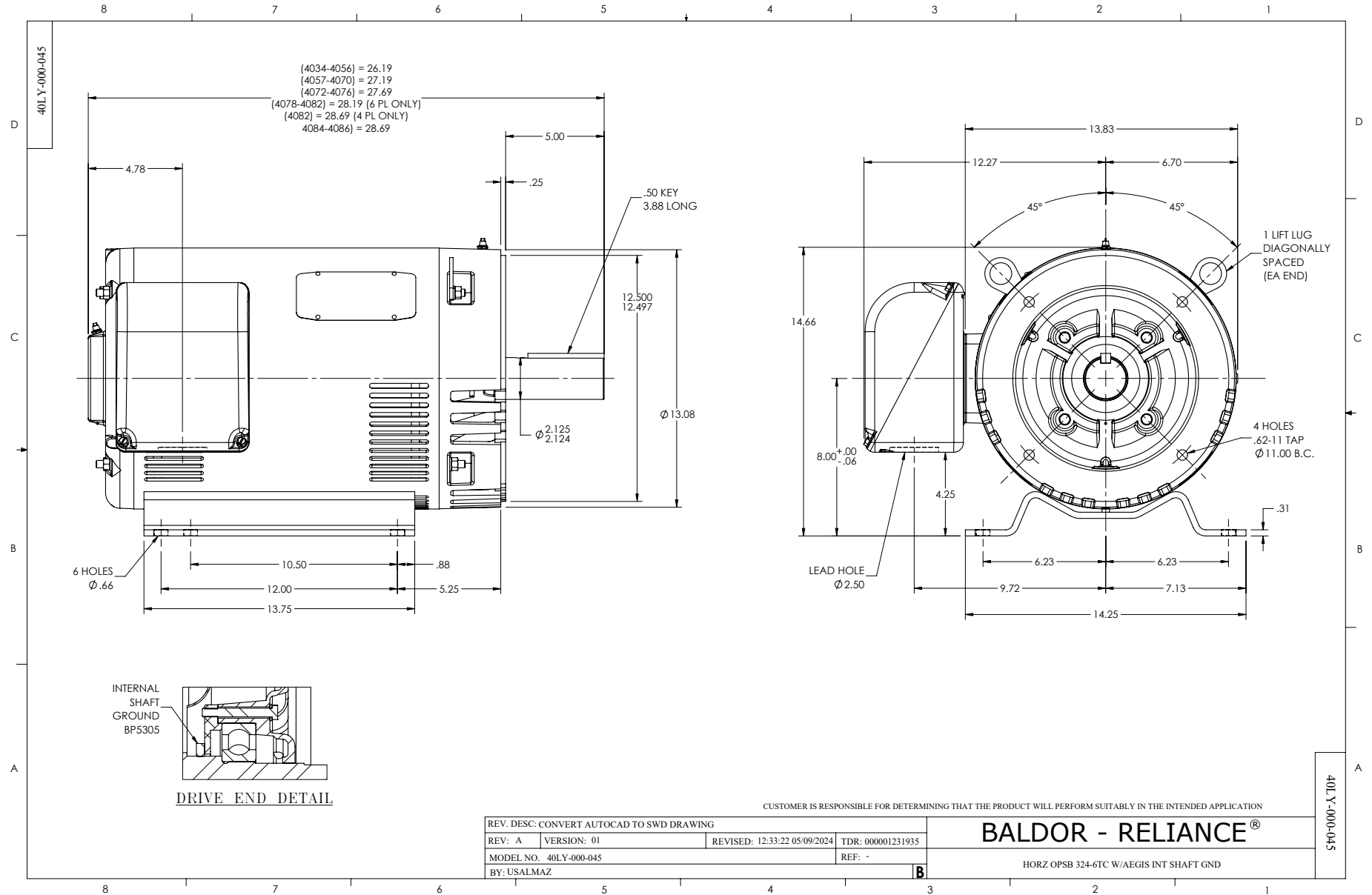
30 HP 3 PH 60 HZ 1180 RPM 460 V 4084M

Typical performance - not guaranteed values.

TORQUES (LB-FT): PO=417 PU=187 LR=233 LRA=267



3/25/2025 ACPERF, record # 66227



CD0005



LOW VOLTAGE  
(2Y)



LINE

HIGH VOLTAGE  
(1Y)



LINE

**NOTES:**

1. INTERCHANGE ANY TWO LINE LEADS TO REVERSE ROTATION.
2. OPTIONAL THERMOSTATS ARE PROVIDED WHEN SPECIFIED.
3. ACTUAL NUMBER OF INTERNAL PARALLEL CIRCUITS MAY BE A MULTIPLE OF THOSE SHOWN ABOVE.
4. LEAD COLORS ARE OPTIONAL. LEADS MUST ALWAYS BE NUMBERED AS SHOWN.

CD0005

REV. DESC: REVISE TO SHOW OPTIONAL COLORS			
REV. LTR: E	BY: JLP	REVISED: 01/19/99 10:15	TDR: 0171435
S00000		FILE: AAA00005140	MDL: -
		MTL: -	

**BALDOR ELECTRIC Co.**

3PH, DV, 9 LEADS