

BALDOR • RELIANCE

Customer information packet

CEM2532T

25HP, 1180RPM, 3PH, 60HZ, 324TC, OPSB, F1

Specifications

Enclosure	OPSB
Frame	324TC
Frame Material	Steel
Frequency	60.00 Hz
Motor Letter Type	Three Phase
Output @ Frequency	25.000 HP @ 60 HZ
Phase	3
Synchronous Speed @ Frequency	1200 RPM @ 60 HZ
Voltage @ Frequency	460.0 V @ 60 HZ 230.0 V @ 60 HZ
Agency Approvals	CSA EEV NEMA PREMIUM NEMA_PREMIUM UR
Ambient Temperature	40 °C
Auxillary Box	No Auxillary Box
Auxillary Box Lead Termination	None
Base Indicator	Rigid
Bearing Grease Type	Polyrex EM (-20F +300F)
Blower	None
Current @ Voltage	70.000 A @ 208.0 V 68.000 A @ 230.0 V 34.000 A @ 460.0 V
Design Code	A
Drip Cover	No Drip Cover
Duty Rating	CONT
Efficiency @ 100% Load	93.0 %
Electrically Isolated Bearing	Not Electrically Isolated
Feedback Device	NO FEEDBACK
Heater Indicator	No Heater
High Voltage Full Load Amps	34.0 a
Insulation Class	F

Part detail

Revision	C
Type	AC
Mech. spec.	
Base	
Status	PRD/A
Elec. spec.	40WGX192
Layout	40LYH006
Eff. date	02-12-2024
CD Diagram	CD0180
Poles	06
Leads	9#10
Proprietary	False
Created date	02-20-2020

Inverter Code	Inverter Ready
IP Rating	NONE
KVA Code	J
Lifting Lugs	Standard Lifting Lugs
Locked Bearing Indicator	Locked Bearing
Motor Lead Termination	Flying Leads
Motor Standards	NEMA
Motor Type	4072M
Mounting Arrangement	F1
Number of Poles	6
Overall Length	27.69 IN
Power Factor	76
Product Family	General Purpose
Pulley Face Code	C-Face
Rodent Screen	None
Service Factor	1.15
Shaft Diameter	2.125 IN
Shaft Ground Indicator	No Shaft Grounding
Shaft Rotation	Reversible
Speed	1180 rpm
Speed Code	Single Speed
Starting Method	Direct on line
Thermal Device - Bearing	None
Thermal Device - Winding	None
Vibration Sensor Indicator	No Vibration Sensor
Winding Thermal 1	None
Winding Thermal 2	None

Nameplate

NP2138L

CAT.NO.	CEM2532T	P/N		ENCLOSURE	OPSB		
SPEC.	40-0000784	CC	010A	FRAME	324TC	S/N	
HP	25	CLASS	F	HZ	60		
RPM	1180	PH	3	DES	A		
VOLT	230/460	KVA-CODE	J	ODE BRG	6309	DE BRG	6312
AMP	68/34						
RATING	40C AMB-CONT	GREASE	POLYREX EM				
NEMA-NOM-EFF	93	PF	76	SER.F.	1.15		
HTR-VOLTS		HTR-AMPS					

AC Induction Motor Performance Data

Record # 81243

Typical performance - not guaranteed values

Winding: 40WGX192-R001		Type: 4072M	Enclosure: OPSB	
Nameplate Data			460 V, 60 Hz: High Voltage Connection	
Rated Output (HP)	25	Full Load Torque	111 LB-FT	
Volts	230/460	Start Configuration	direct on line	
Full Load Amps	68/34	Breakdown Torque	410 LB-FT	
R.P.M.	1180	Pull-up Torque	205 LB-FT	
Hz	60 Phase	Locked-rotor Torque	217 LB-FT	
NEMA Design Code	A KVA Code	Starting Current	236 A	
Service Factor (S.F.)	1.15	No-load Current	16.7 A	
NEMA Nom. Eff.	93 Power Factor	Line-line Res. @ 25°C	0.312 Ω	
Rating - Duty	40C AMB-CONT	Temp. Rise @ Rated Load	40°C	
S.F. Amps		Temp. Rise @ S.F. Load	48°C	
		Locked-rotor Power Factor	30.9	
		Rotor inertia	8.82 lb-ft ²	

Load Characteristics 460 V, 60 Hz, 25 HP

% of Rated Load	25	50	75	100	125	150	S.F.
Power Factor	36	57	70	76	79	80	78
Efficiency	87	91.2	92.4	92.7	92.3	91.5	92.5
Speed	1196	1192	1188	1185	1181	1176	1183
Line amperes	18.5	22.3	27.4	33.5	40.3	47.8	37.6

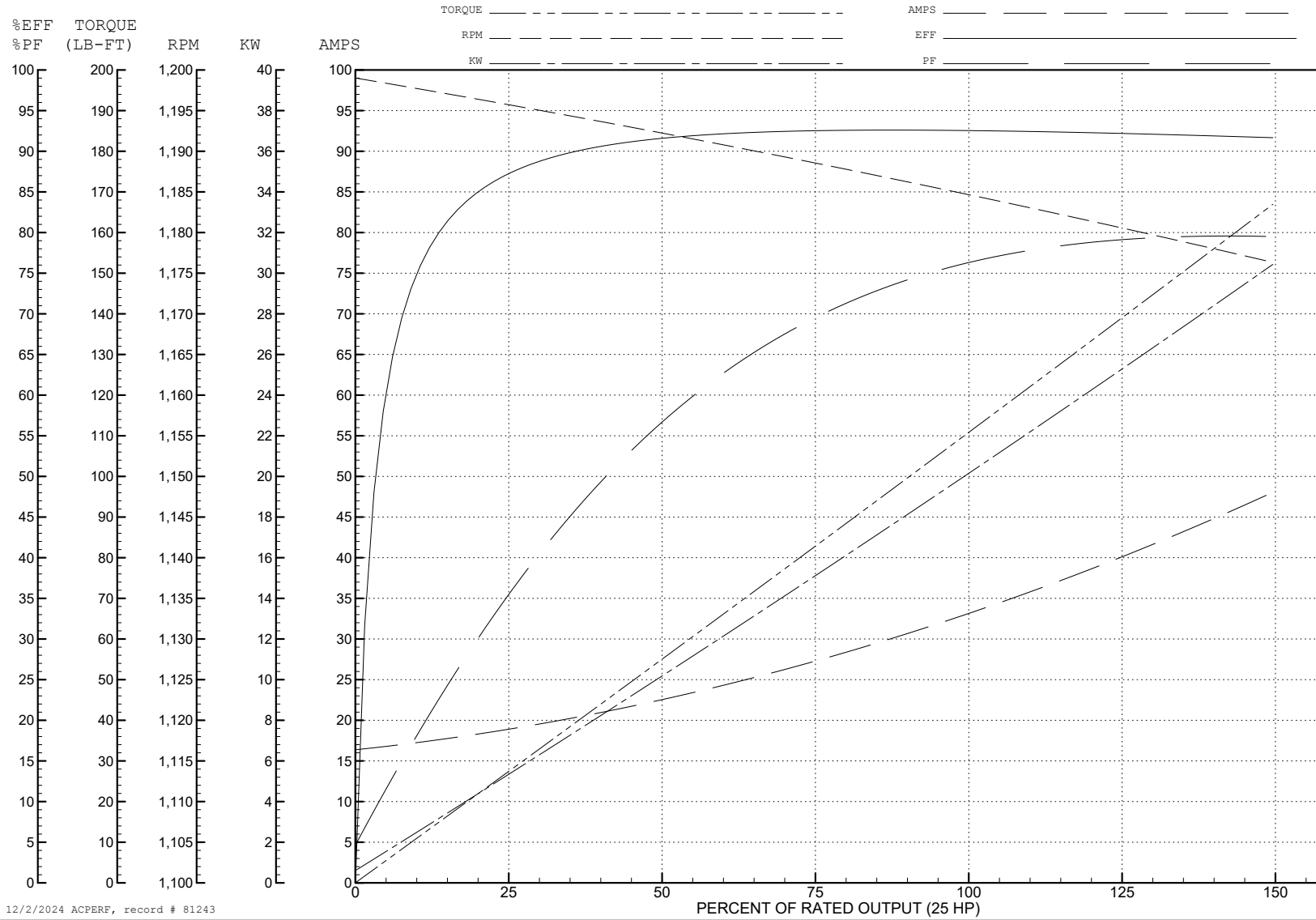
ABB Motors and Mechanical Inc.

WINDING # 40WGX192

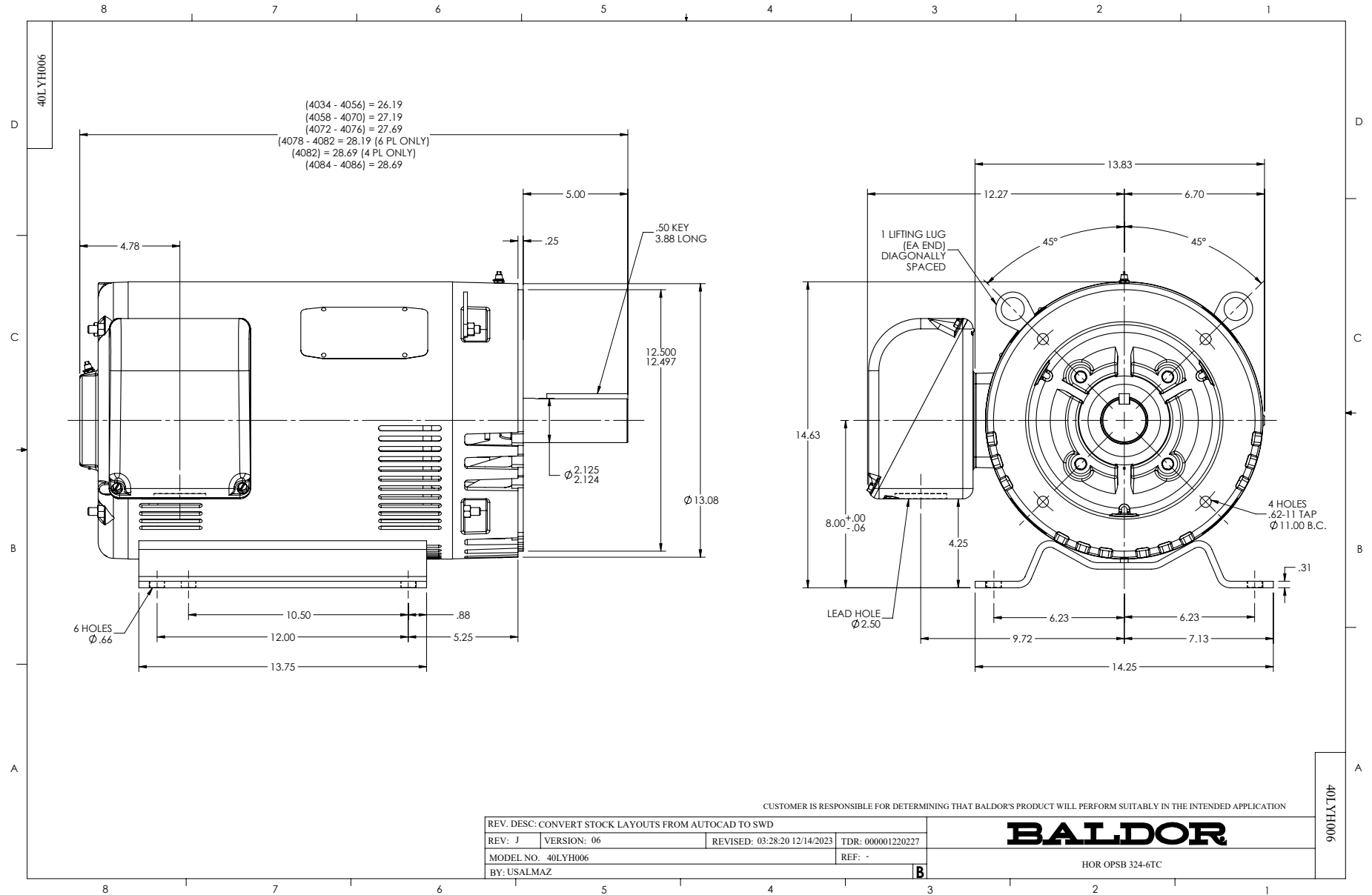
25 HP 3 PH 60 HZ 1180 RPM 460 V 4072M

Typical performance - not guaranteed values.

TORQUES (LB-FT): PO=410 PU=205 LR=217 LRA=236



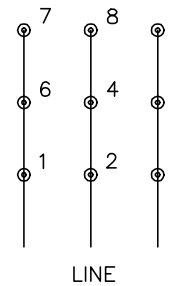
12/2/2024 ACPERF, record # 81243



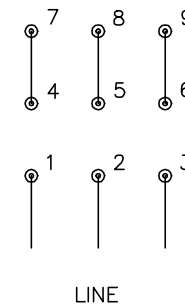
CD0180



LOW VOLTAGE
(2D)



HIGH VOLTAGE
(1D)



NOTES:

1. INTERCHANGE ANY TWO LINE LEADS TO REVERSE ROTATION.
2. OPTIONAL THERMOSTATS ARE PROVIDED WHEN SPECIFIED.
3. ACTUAL NUMBER OF INTERNAL PARALLEL CIRCUITS MAY BE A MULTIPLE OF THOSE SHOWN ABOVE.
4. LEAD COLORS ARE OPTIONAL. LEADS MUST ALWAYS BE NUMBERED AS SHOWN.

CD0180

REV. DESC: ADD CLASS CONN00000007		
REV. LTR: D	VERSION: 01	TDR: 000001099922
FILE: \AAA\00005\148	REVISED: 10: 25: 29 02/19/2019	BY: ENBRIRO
MTL: -	© □	

BALDOR - RELIANCE®

3PH, DV, 9 LEADS, DELTA CONNECTION

SH 1 of 1