

BALDOR • RELIANCE

Customer information packet

CEDM3555

2HP, 3490RPM, 3PH, 60HZ, 56C, 3526M, TEFC, F1, N

Class - None

Division - Not Applicable

Specifications

| | |
|--------------------------------|---|
| Enclosure | TEFC |
| Frame | 56C |
| Frame Material | Steel |
| Frequency | 60.00 Hz |
| Motor Letter Type | Three Phase |
| Output @ Frequency | 2.000 HP @ 60 HZ |
| Phase | 3 |
| Synchronous Speed @ Frequency | 3600 RPM @ 60 HZ |
| Voltage @ Frequency | 460.0 V @ 60 HZ 230.0 V @ 60 HZ |
| XP Class and Group | None |
| XP Division | Not Applicable |
| Agency Approvals | CCSA US CSA EEV NEMA PREMIUM NEMA_PREMIUM UR |
| Ambient Temperature | 40 °C |
| Auxillary Box | No Auxillary Box |
| Auxillary Box Lead Termination | None |
| Base Indicator | Rigid |
| Bearing Grease Type | Polyrex EM (-20F +300F) |
| Blower | None |
| Constant Torque Speed Range | 6 |
| Current @ Voltage | 5.300 A @ 208.0 V 5.000 A @ 230.0 V 2.500 A @ 460.0 V |
| Design Code | B |
| Drip Cover | No Drip Cover |
| Duty Rating | CONT |
| Efficiency @ 100% Load | 85.5 % |
| Electrically Isolated Bearing | Not Electrically Isolated |

Part detail

| | |
|--------------|------------|
| Revision | M |
| Type | AC |
| Mech. spec. | 35E4315 |
| Base | |
| Status | PRD/A |
| Elec. spec. | 35WGM774 |
| Layout | 35LYE4315 |
| Eff. date | 08-24-2022 |
| CD Diagram | CD0005 |
| Poles | 02 |
| Leads | 9#18 |
| Proprietary | False |
| Created date | 05-10-2016 |

| | |
|-------------------------------|--------------------|
| Feedback Device | NO FEEDBACK |
| Front Face Code | Standard |
| Front Shaft Indicator | None |
| Heater Indicator | No Heater |
| High Voltage Full Load Amps | 2.5 a |
| Insulation Class | F |
| Inverter Code | Inverter Duty |
| KVA Code | M |
| Lifting Lugs | No Lifting Lugs |
| Locked Bearing Indicator | Locked Bearing |
| Max Speed | 5400 rpm |
| Motor Lead Exit | Ko Box |
| Motor Lead Quantity/Wire Size | 9 @ 18 AWG |
| Motor Lead Termination | Flying Leads |
| Motor Standards | NEMA |
| Motor Type | 3526M |
| Mounting Arrangement | F1 |
| Number of Poles | 2 |
| Overall Length | 13.23 IN |
| Power Factor | 88 |
| Product Family | Dirty Duty Plus |
| Pulley End Bearing Type | Sealed Bearing |
| Pulley Face Code | C-Face |
| Pulley Shaft Indicator | Standard |
| Rodent Screen | None |
| RoHS Status | ROHS COMPLIANT |
| Service Factor | 1.15 |
| Shaft Diameter | 0.625 IN |
| Shaft Extension Location | Pulley End |
| Shaft Ground Indicator | No Shaft Grounding |
| Shaft Rotation | Reversible |
| Shaft Slinger Indicator | No Slinger |
| Speed | 3490 rpm |
| Speed Code | Single Speed |

| | |
|-----------------------------------|---------------------|
| Starting Method | Direct on line |
| Thermal Device - Bearing | None |
| Thermal Device - Winding | None |
| Vibration Sensor Indicator | No Vibration Sensor |
| Winding Thermal 1 | None |
| Winding Thermal 2 | None |

Nameplate

NP3504

| | | | | | |
|---------------------|---------------|-----------------|------|-------------------|------|
| CAT NO | CEDM3555 | | | | |
| SPEC. | 35E4315M774G1 | ENCL | TEFC | | |
| FRAME | 56C | HP | 2 | | |
| VOLTS | 230/460 | | | | |
| FLA | 5/2.5 | I.P. | 56 | | |
| RPM | 3490 | RPM MAX | 5400 | | |
| HZ | 60 | PH | 3 | CLASS | F |
| SER.F. | 1.15 | DES | B | CC | 010A |
| NEMA-NOM-EFF | 85.5 | | | | |
| RATING | 40C AMB-CONT | | | | |
| DE BRG | 6205 | ODE BRG | 6203 | | |
| GREASE | POLYREX EM | | | | |
| C HP FR | 60 | C HP TO | 90 | | |
| CT HZ FROM | 6 | CT HZ TO | 60 | VT HZ FROM | 6 |
| | | | | VT HZ TO | 60 |
| SER.NO | | | | | |
| | 50C AT 1.0 SF | | | | |

AC Induction Motor Performance Data

Record # 55731

Typical performance - not guaranteed values

| Winding: 35WGM774-R081 | | Type: 3526M | Enclosure: TEFC | |
|------------------------|-------------------|---------------------------|--|--|
| Nameplate Data | | | 460 V, 60 Hz: High Voltage Connection | |
| Rated Output (HP) | 2 | Full Load Torque | 2.98 LB-FT | |
| Volts | 230/460 | Start Configuration | direct on line | |
| Full Load Amps | 5/2.5 | Breakdown Torque | 14.2 LB-FT | |
| R.P.M. | 3490 | Pull-up Torque | 6.33 LB-FT | |
| Hz | 60 Phase | Locked-rotor Torque | 11.2 LB-FT | |
| NEMA Design Code | B KVA Code | Starting Current | 25.9 A | |
| Service Factor (S.F.) | 1.15 | No-load Current | 0.912 A | |
| NEMA Nom. Eff. | 85.5 Power Factor | Line-line Res. @ 25°C | 6.9119 Ω | |
| Rating - Duty | 40C AMB-CONT | Temp. Rise @ Rated Load | 44°C | |
| S.F. Amps | | Temp. Rise @ S.F. Load | 52°C | |
| | | Locked-rotor Power Factor | 50 | |
| | | Rotor inertia | 0.0719 LB-FT ² | |

Load Characteristics 460 V, 60 Hz, 2 HP

| % of Rated Load | 25 | 50 | 75 | 100 | 125 | 150 | S.F. |
|-----------------|--------|--------|--------|--------|--------|--------|------|
| Power Factor | 55 | 75 | 84 | 88 | 90 | 91 | 89 |
| Efficiency | 74.3 | 83.5 | 85.9 | 86.4 | 85.9 | 84.8 | 86.1 |
| Speed | 3571.7 | 3546.5 | 3520.2 | 3492.1 | 3460.7 | 3425.5 | 3473 |
| Line amperes | 1.1 | 1.47 | 1.93 | 2.44 | 3 | 3.61 | 2.78 |

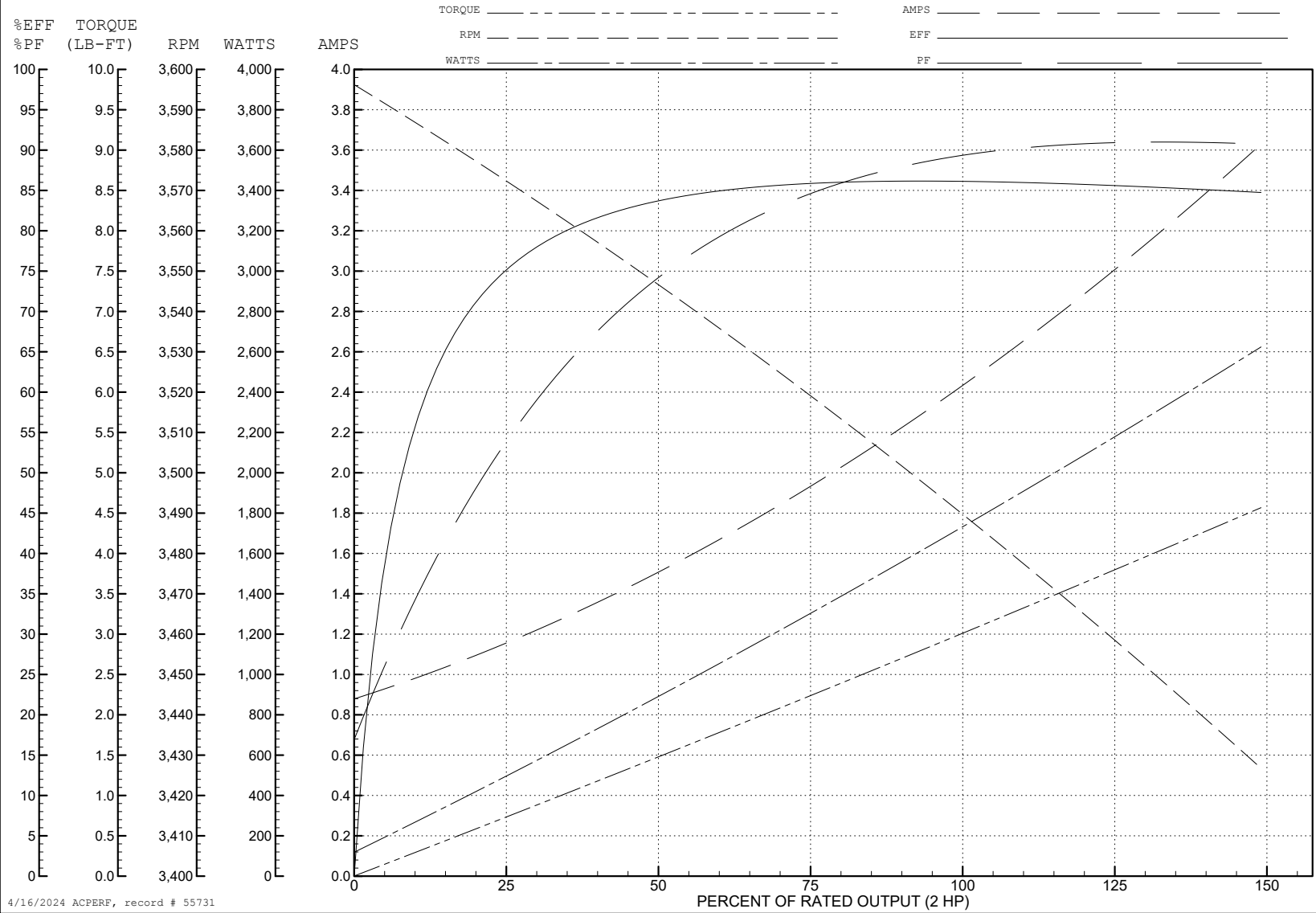
ABB Motors and Mechanical Inc.

WINDING # 35WGM774

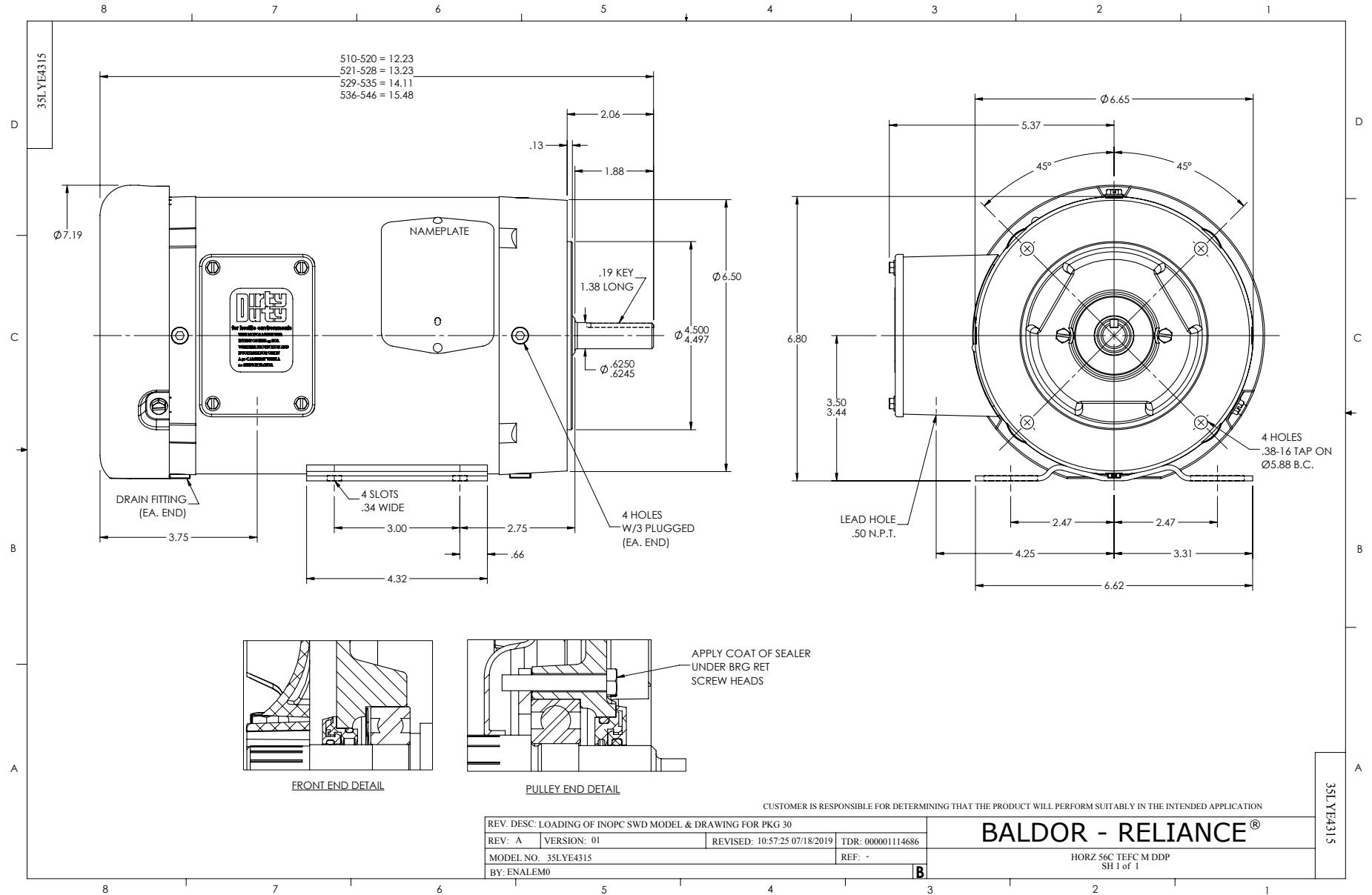
Typical performance - not guaranteed values.

2 HP 3 PH 60 HZ 3490 RPM 460 V 3526M

TORQUES (LB-FT): PO=14.2 PU=6.33 LR=11.2 LRA=25.9



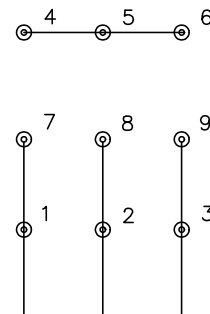
4/16/2024 ACPERF, record # 55731



CD0005

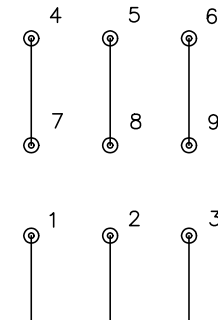


LOW VOLTAGE (2Y)



LINE

HIGH VOLTAGE (1Y)



LINE

NOTES:

1. INTERCHANGE ANY TWO LINE LEADS TO REVERSE ROTATION.
2. OPTIONAL THERMOSTATS ARE PROVIDED WHEN SPECIFIED.
3. ACTUAL NUMBER OF INTERNAL PARALLEL CIRCUITS MAY BE A MULTIPLE OF THOSE SHOWN ABOVE.
4. LEAD COLORS ARE OPTIONAL. LEADS MUST ALWAYS BE NUMBERED AS SHOWN.

CD0005

| | | | |
|---|---------|-------------------------|--------------|
| REV. DESC: REVISE TO SHOW OPTIONAL COLORS | | | |
| REV. LTR: E | BY: JLP | REVISED: 01/19/99 10:15 | TDR: 0171435 |
| S00000 | | FILE: AAA00005140 | MDL: - |
| | | MTL: - | |

BALDOR ELECTRIC Co.

3PH, DV, 9 LEADS