

BALDOR • RELIANCE

Customer information packet

CECP84117T-4

30HP, 1180RPM, 3PH, 60HZ, 326TC, TEFC, F1

Class - CLI GP A,B,C,D

Division - Division II

Copyright © All product information within this document is subject to ABB Motors and Mechanical Inc. copyright © protection, unless otherwise noted.

12/2/2024 7:46:04 PM

Specifications

Enclosure	TEFC
Frame	326TC
Frame Material	Iron
Frequency	60.00 Hz
Haz Area Class and Group	CLI GP A,B,C,D
Haz Area Division	Division II
Motor Letter Type	Three Phase
Output @ Frequency	30.000 HP @ 60 HZ
Phase	3
Synchronous Speed @ Frequency	1200 RPM @ 60 HZ
Voltage @ Frequency	460.0 V @ 60 HZ
Agency Approvals	CCSA US CSA EEV NEMA PREMIUM NEMA_PREMIUM UR
Ambient Temperature	40 °C
Auxillary Box	No Auxillary Box
Auxillary Box Lead Termination	None
Base Indicator	Rigid
Bearing Grease Type	Polyrex EM (-20F +300F)
Blower	None
Constant Torque Speed Range	1
Current @ Voltage	38.000 A @ 460.0 V
Design Code	B
Drip Cover	No Drip Cover
Duty Rating	CONT
Efficiency @ 100% Load	93.0 %
Electrically Isolated Bearing	Not Electrically Isolated
Enclosure Modification	841
Feedback Device	NO FEEDBACK
Haz Area Temp Code	T3

Part detail

Revision	G
Type	AC
Mech. spec.	
Base	
Status	PRD/A
Elec. spec.	12WGZ195
Layout	12LY-000-140
Eff. date	07-19-2023
CD Diagram	CD0006
Poles	06
Leads	3#8
Proprietary	False
Created date	01-15-2019

Heater Indicator	No Heater
High Voltage Full Load Amps	38.0 a
Insulation Class	F
Inverter Code	Inverter Duty
IP Rating	IP56
KVA Code	G
Lifting Lugs	Standard Lifting Lugs
Locked Bearing Indicator	Locked Bearing
Max Speed	1800 rpm
Motor Lead Termination	Ring Terminals
Motor Standards	NEMA
Motor Type	1268M
Mounting Arrangement	F1
Number of Poles	6
Overall Length	30.74 IN
Power Factor	80
Product Family	Chem Process S/P 32-8 IEEE 841
Pulley Face Code	C-Face
Rodent Screen	None
Service Factor	1.15
Shaft Diameter	2.125 IN
Shaft Ground Indicator	No Shaft Grounding
Shaft Rotation	Reversible
Speed	1180 rpm
Speed Code	Single Speed
Starting Method	Direct on line
Thermal Device - Bearing	None
Thermal Device - Winding	None
Vibration Sensor Indicator	No Vibration Sensor
Winding Thermal 1	None
Winding Thermal 2	None

Nameplate

NP4332

STK.NO.	CECP84117T-4	P/N		ENCLOSURE	TEFC
SPEC.	12-0000-0418	CC	010A	FRAME	326TC
HP	30	CLASS	F	HZ	60
RPM	1180	RPM MAX	1800	ODE BRG	6312
VOLT	460	PH	3	DE BRG	6312
AMP	38	DES	B	D.E. BRG.	60BC03X30X
RATING	40C AMB-CONT	KVA-CODE	G	O.D.E. BRG.	60BC03X30X
NEMA-NOM-EFF	93	MOTOR WEIGHT	640	GREASE	POLYREX EM
G.MIN.EFF	91.7	MAX. KVAR	9.9	BLANK	
TEMP CODE	T3	# OF ROTOR BARS	42	SER.F.	1.15
TEMP =	200	# OF STATOR SLOTS	54	IP	56
CT HZ FROM	1	PF	80	INV.TYPE	PWM
HTR-VOLTS		INVERTER-TEMP-CODE	200		
HTR-AMPS		C HP FR	60	C HP TO	90
HTR-WATTS		CT HZ TO	60		
MAX. SPACE HEATER TEMP.				VT HZ FROM	0
				VT HZ TO	60

AC Induction Motor Performance Data

Record # 93177

Typical performance - not guaranteed values

Winding: 12WGZ195-R001		Type: 1268M	Enclosure: TEFC		
Nameplate Data			460 V, 60 Hz: Single Voltage Motor		
Rated Output (HP)	30	Full Load Torque	133.6 LB-FT		
Volts	460	Start Configuration	direct on line		
Full Load Amps	38	Breakdown Torque	343 LB-FT		
R.P.M.	1180	Pull-up Torque	154 LB-FT		
Hz	60	Phase	3	Locked-rotor Torque	189 LB-FT
NEMA Design Code	B	KVA Code	G	Starting Current	217 A
Service Factor (S.F.)	1.15	No-load Current	15 A		
NEMA Nom. Eff.	93	Power Factor	80	Line-line Res. @ 25°C	0.24434 Ω
Rating - Duty	40C AMB-CONT		Temp. Rise @ Rated Load	55°C	
S.F. Amps			Temp. Rise @ S.F. Load	68°C	
			Locked-rotor Power Factor	29.1	

Load Characteristics 460 V, 60 Hz, 30 HP

% of Rated Load	25	50	75	100	125	150	S.F.
Power Factor	45	67	76	80	81	81	81
Efficiency	90.6	93.5	93.8	93	92.4	91.1	92.8
Speed	1195.5	1190.7	1185.8	1180.5	1174.1	1166.3	1177
Line amperes	17.2	22.5	29.5	37.5	46.6	57	43

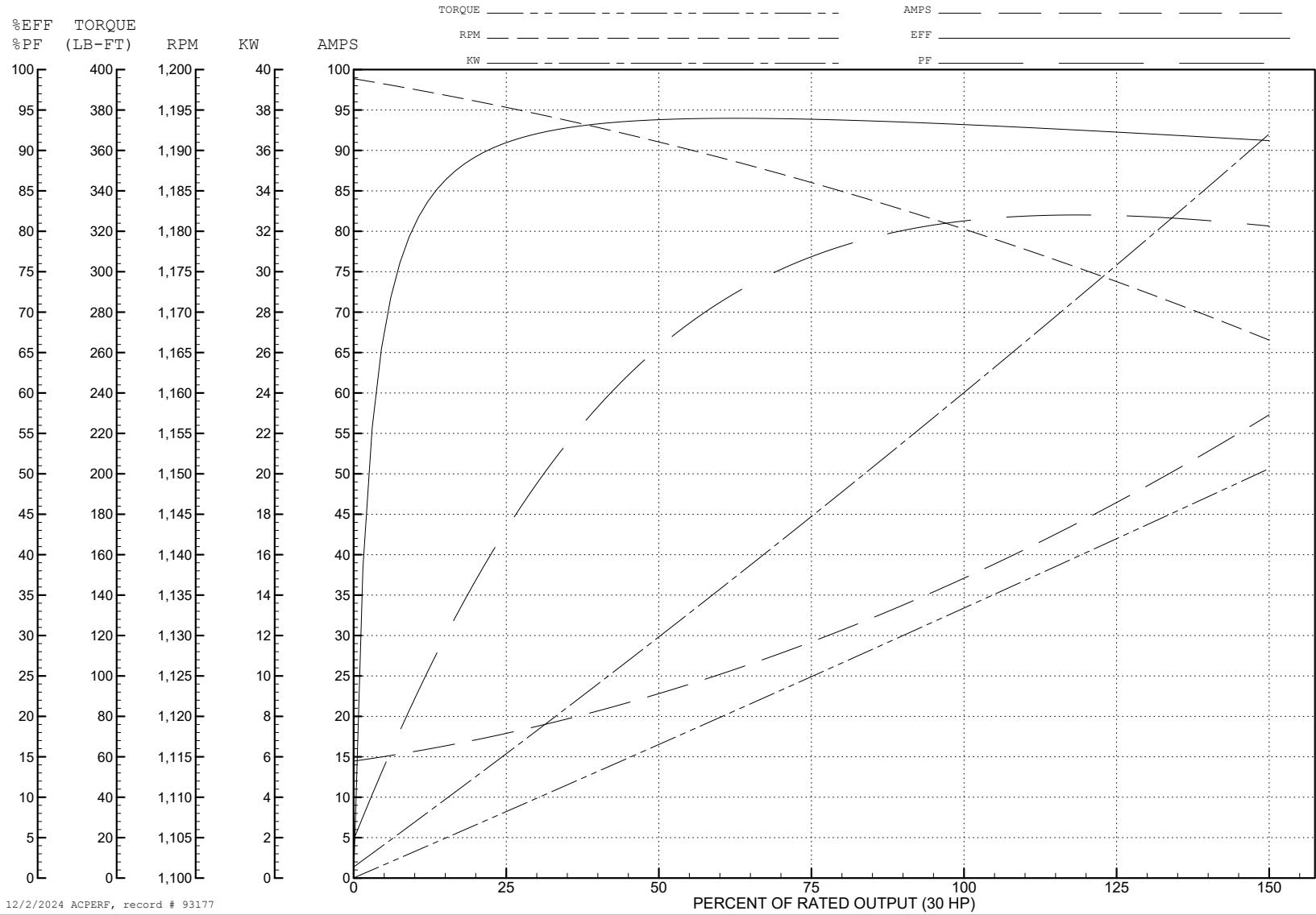
ABB Motors and Mechanical Inc.

WINDING # 12WGZ195

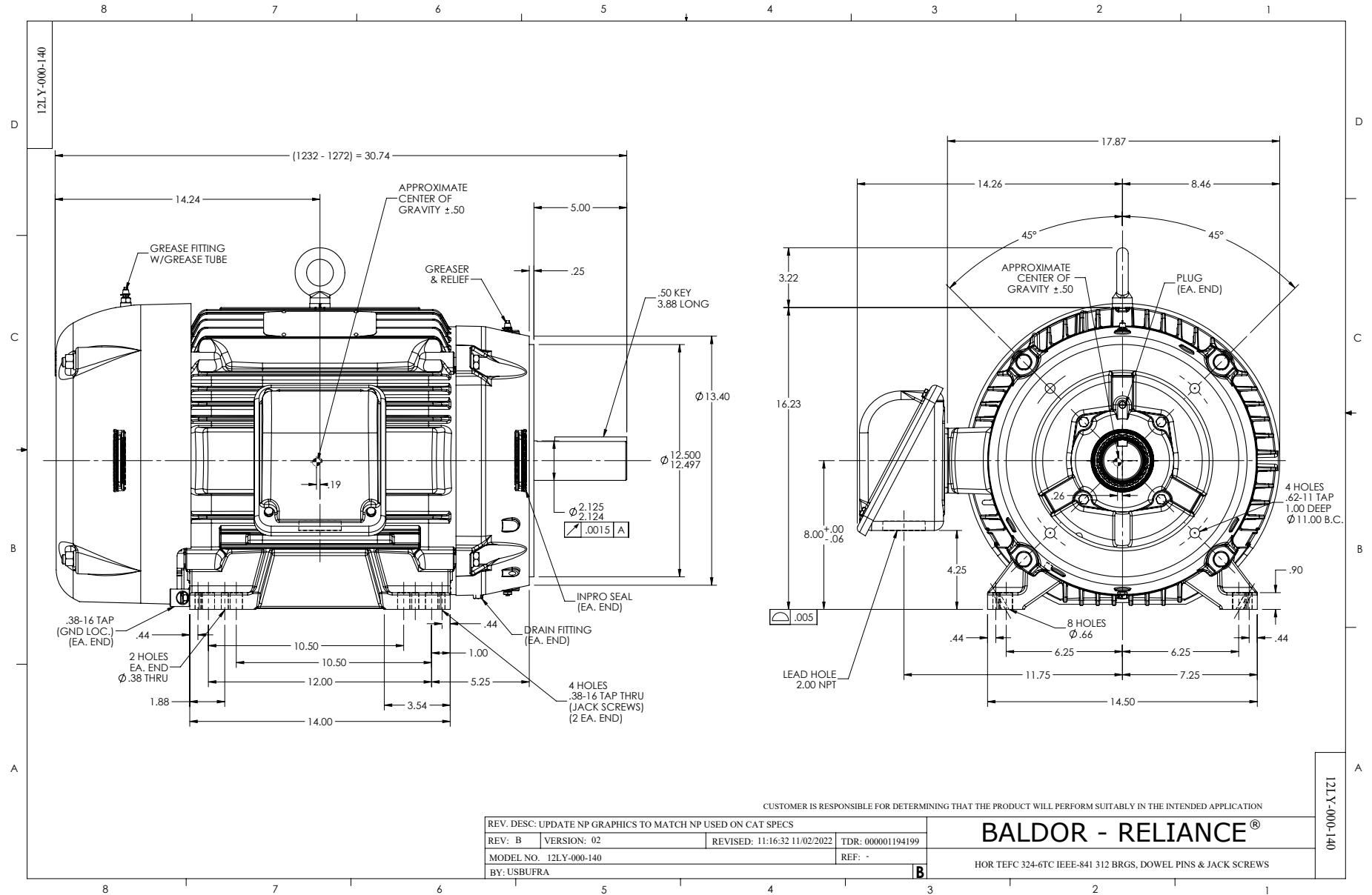
30 HP 3 PH 60 HZ 1180 RPM 460 V 1268M

Typical performance - not guaranteed values.

TORQUES (LB-FT): PO=343 PU=154 LR=189 LRA=217



12/2/2024 ACPERF, record # 93177



CD0006



NOTES:

1. THREE LEAD MOTOR MAY BE EITHER WYE CONNECTED OR DELTA CONNECTED.
2. INTERCHANGE ANY TWO LINE LEADS TO REVERSE ROTATION.
3. OPTIONAL THERMOSTATS ARE PROVIDED WHEN SPECIFIED.
4. ACTUAL NUMBER OF INTERNAL PARALLEL CIRCUITS MAY VARY.
5. LEAD COLORS ARE OPTIONAL. LEADS MUST BE NUMBERED AS SHOWN.

CD0006

REV. DESC: ADD CLASS CONN00000007		
REV. LTR: E	VERSION: 01	TDR: 000001099922
FILE: \AAA\00005\141	REVISED: 10:24:49 02/19/2019	BY: ENBRIRO
MTL: -	© □	

BALDOR - RELIANCE®

3PH, SV, 3 LEADS, WYE OR DELTA CONNECTED

SH 1 of 1